

How to Add a Motion Blur Effect to your Photos

Your athletes deserve to be at the head of the pack, not left in the dust! This PaintShop Pro tutorial will show you how to add a motion blur effect to give the illusion of speed and movement in your photos.

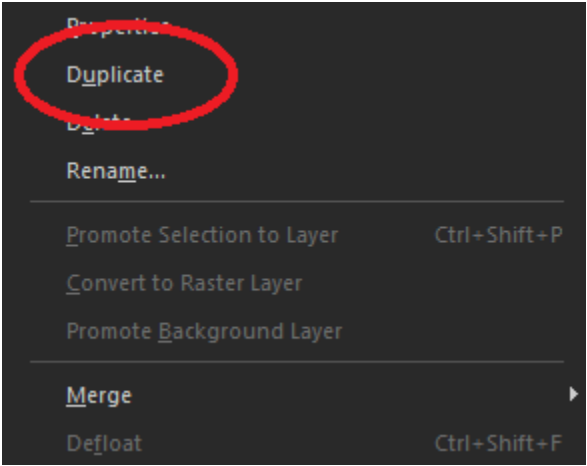


It can be such a challenge to show off athletes in photos. Their blazing speed, power, and intensity just doesn't come across. Thankfully you've come to the right place. Today I'm going to show you how to make your athlete look like a gold-medal winner with motion effects in Corel PaintShop Pro.

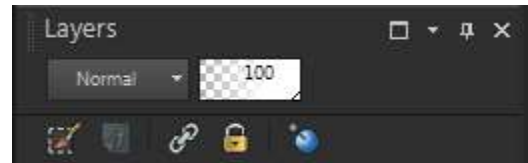



The first thing you're going to need is an image where your subject at least appears to be moving in some capacity. Preferably this shot will be from a side view. In this example, this bicycle race has one particular cyclist I want to showcase. I'm going to make him appear to be moving way faster than anybody else.

My first step is making a copy of the background. Right-click on the **Background** layer and select **Duplicate**.

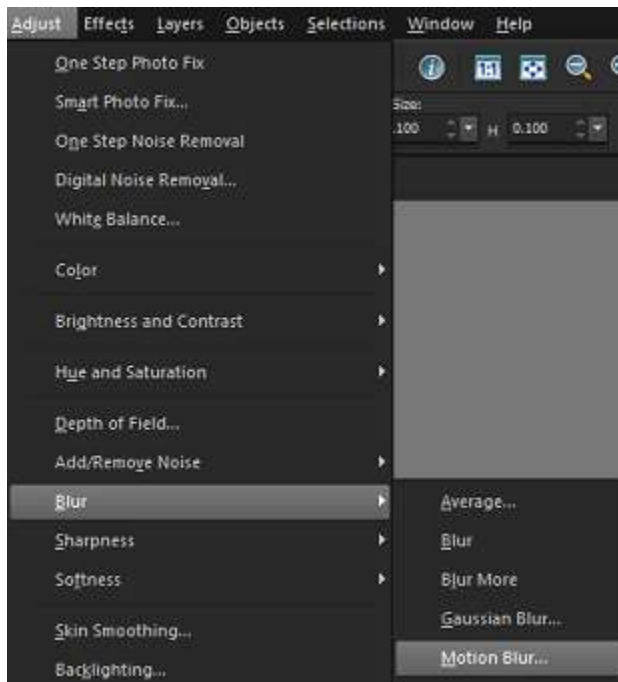


Now if you don't see the **Layers** palette open on the right side of your screen, simply hit the **F8** key on your keyboard and it will pop up.

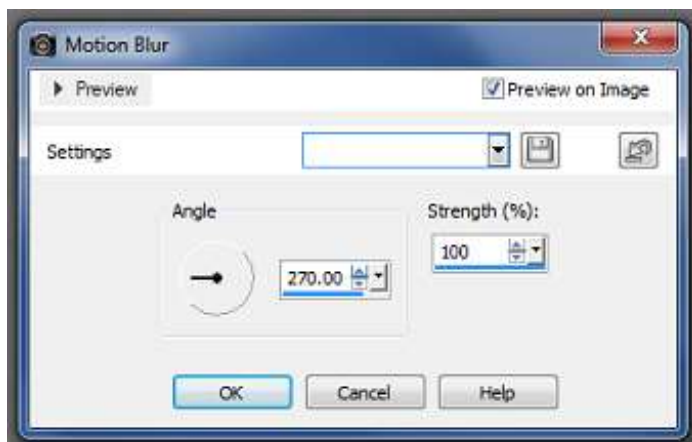


This extra layer we're creating isn't going to be used yet - but we'll save it for later. Just click **Visibility** toggle  to hide it from view and then select the **Background** layer.

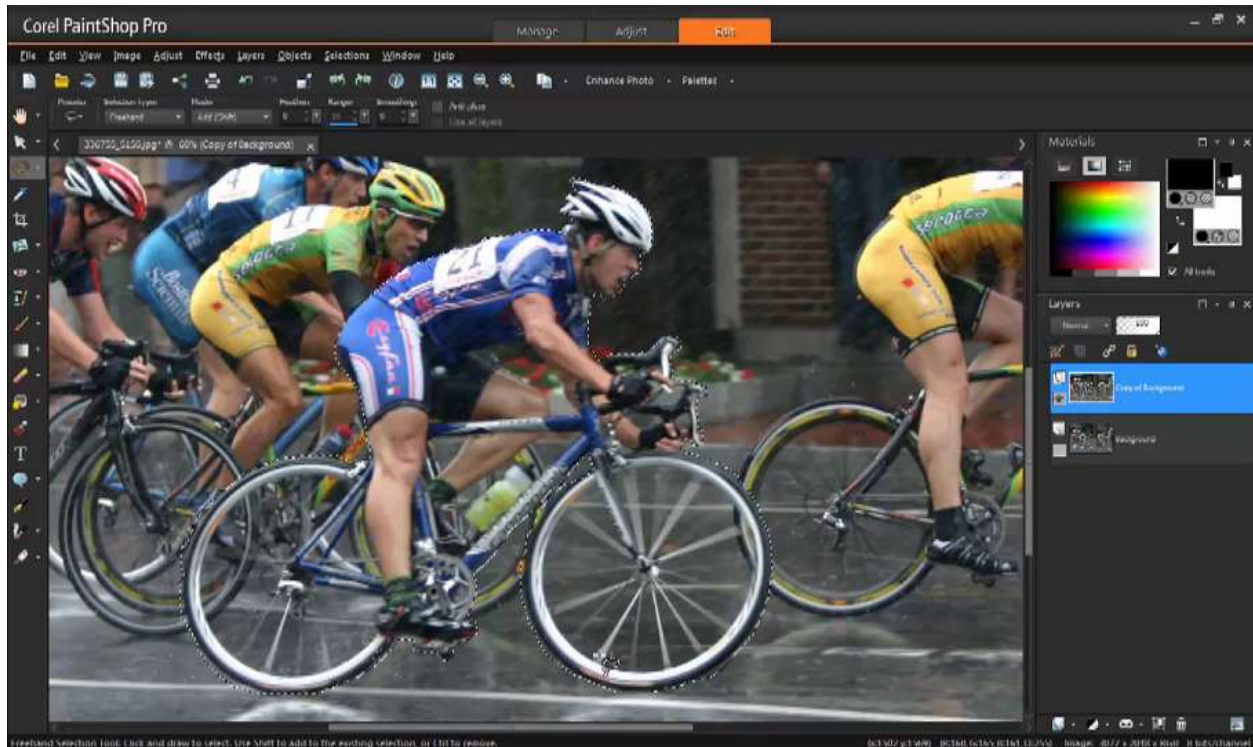
Now that we have our background ready to go so now let's transform our image. From the **Adjust** menu select **Blur > Motion Blur**.



Set the **Angle** to 270 degrees and the **Strength** to 100%. Depending on the size of your image, you might have to repeat that step a few times to get the effect you want. In this case I'll do it one more time.



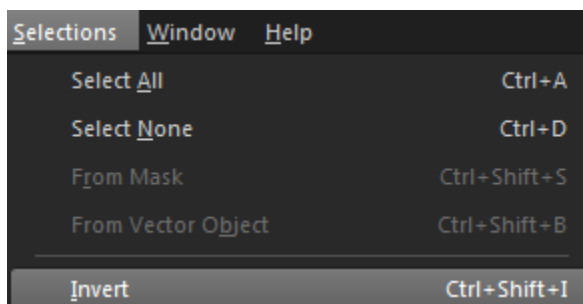
Next, hide the **Background** layer and select the **Duplicate** layer. This layer we want to keep un-blurred. Select your subject and carefully remove the background. You can do this with any tools you see fit; **Selection** tool, **Eraser** or **Background Eraser** would be the most common options.



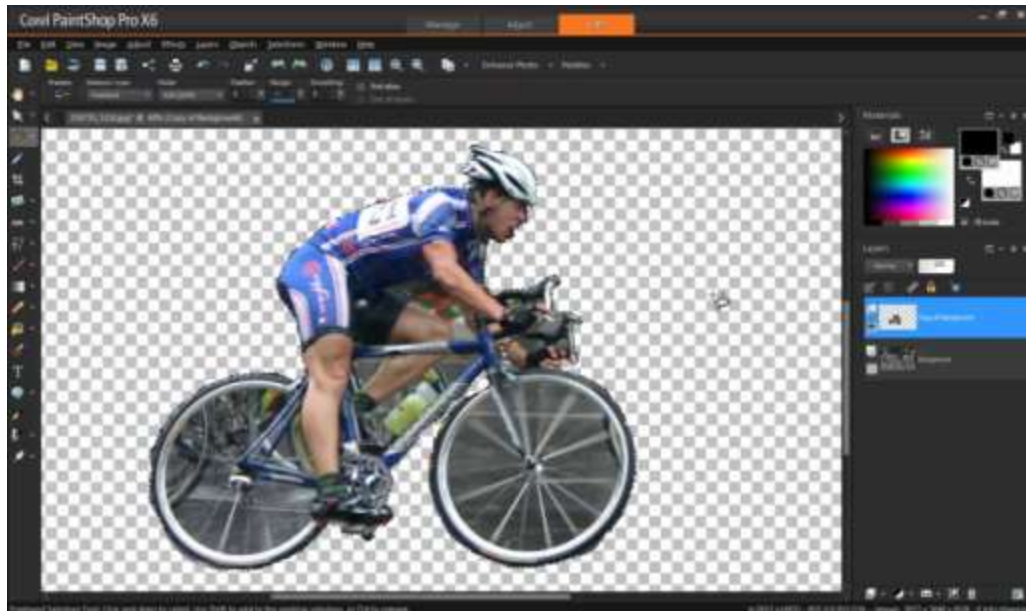
In this case, I traced around the subject with the **Freehand Selection** tool.



Next, go to **Selections > Invert** and then click the **Delete** key on your keyboard to remove the background.



Our cyclist is now clear of the background.



The background removal is pretty much done; simply use the **Eraser** tool to touch up the edges. Set the **Hardness** to 0, to create a nice smooth edge.



We're basically done! Go back to the **Layers** palette and click the **Visibility** icon. You can check the background to make sure it's blending in with your subject. Any final touch ups you can do with the **Eraser**. To make the back blend a little more you can also use the **Push** brush.

