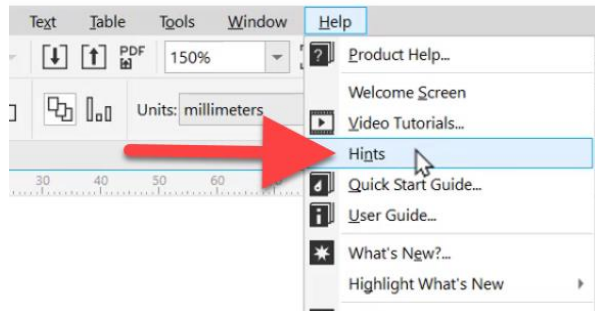


Using the Hints Docker

In this tutorial, you'll learn how to use the **Hints** docker in CorelDRAW. This handy feature provides information about whichever tool you have activated, so you can learn how to use it right within the application.

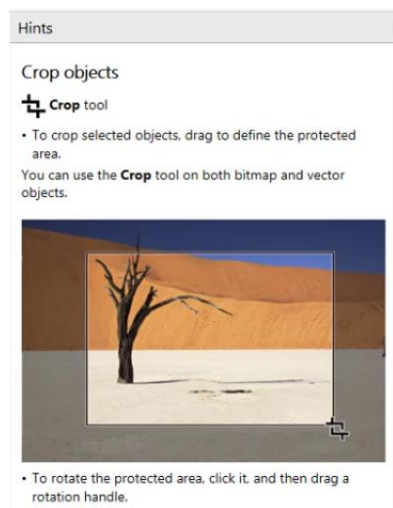
Activating the Hints Docker

To open the Hints docker, click on **Help > Hints**.



When the **Hints** command is enabled, the **Hints** docker appears and provides information about the active tool in the toolbox.

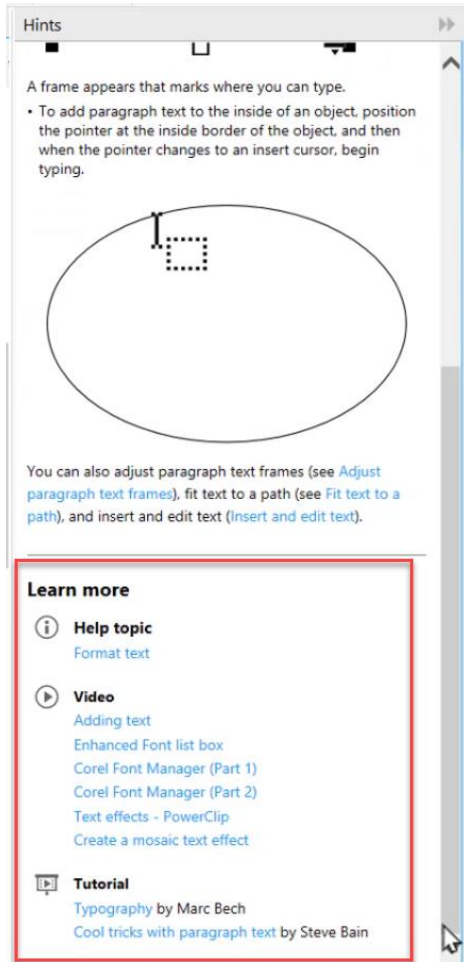
For example, click on the **Crop** tool. The **Hints** docker will display all the information that you need to know to learn how to use this tool.



Click on any tool that you want to learn about, and the **Hints** docker will display the information you need to learn how to use the tool.

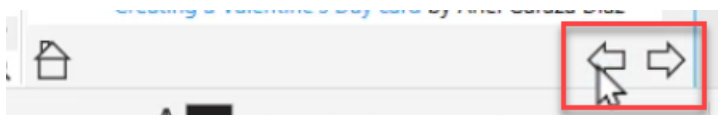
The **Hints** docker will also show you other helpful resources for learning more about the tool you've selected.

For example, click on the **Text** tool and scroll down to the **Learn More** section.

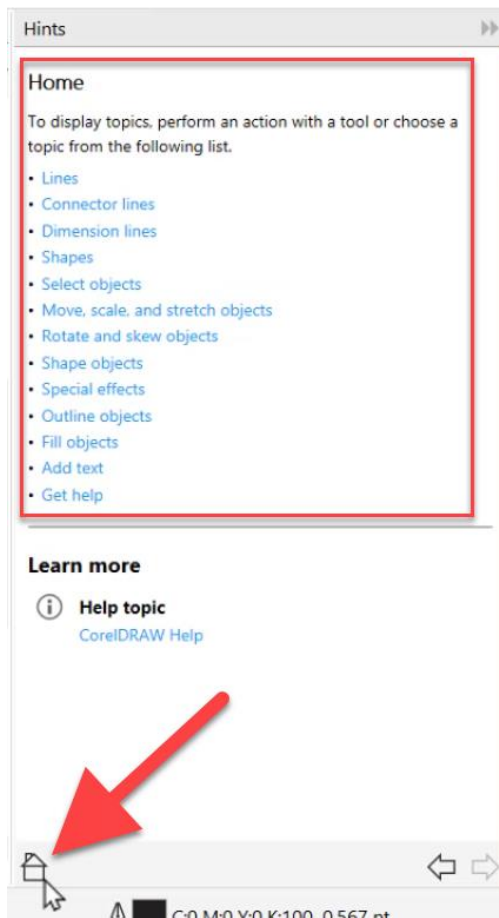


Here, you can quickly access several different videos and tutorials all related to how to use the **Text** tool so you can quickly master the tool without having to search for these tutorials individually.

To navigate to previously viewed topics, just click the **Back** and **Forward** buttons at the bottom of the Hints dock.



Click the **Home** icon to display a list of all the categories for the available Hints.



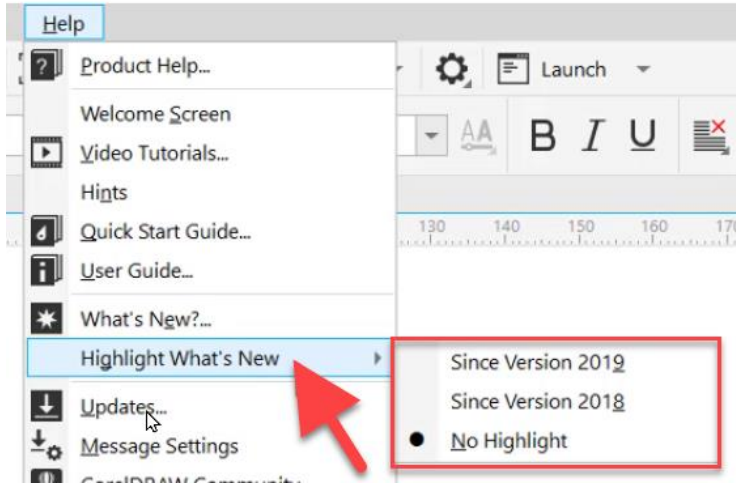
To close the docker, click on the X in the top right corner of the Hints docker, or click Help and deselect Hints.

Activating the Highlight What's New Command

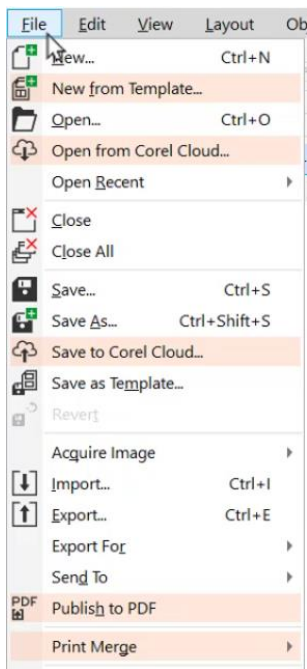
When you activate this feature, any new or updated/enhanced tools on the toolbar will be highlighted with an orange-pink color in the interface, as well as for menu commands.

Go to **Help > Highlight What's New**.

Depending on your product version you will have a few options in the flyout such as **Since Version 2018** and **Since Version 2019**.



Select one of these options and all the new or updated features on the toolbar or menu will now be highlighted.



To deactivate this feature, go to **Help > Highlight What's New > No Highlight**.

The **Highlight What's New** command is a great way to learn about any new features in CorelDRAW in addition to the **Hints** docker which will help you learn how to master these new tools.