

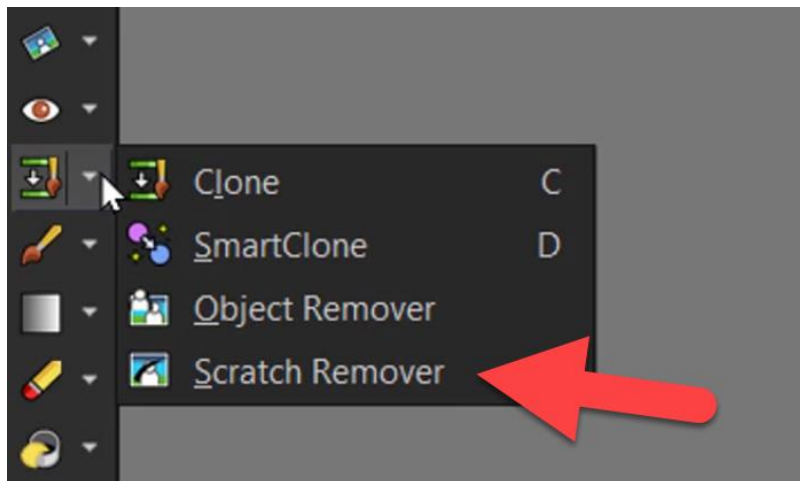
How to Use the Scratch Remover Tool

In this tutorial, you'll learn how to use the **Scratch Remover** tool in PaintShop Pro to remove scratches, cracks, and other imperfections from images to restore and perfect your photos.

The **Scratch Remover** tool can be used to restore old, scanned photos that have some cracks and scratches. Additionally, you can use the **Scratch Remover** tool to remove other linear elements such as stray hairs on a portrait photo, or powerlines running through a nice landscape shot.

Scratch Remover Tool Settings

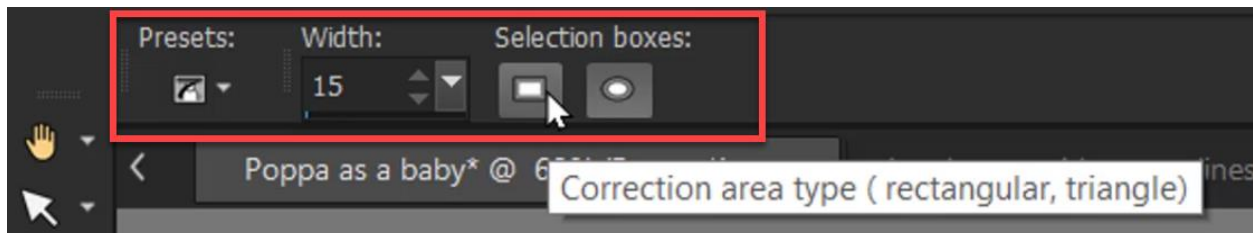
The **Scratch Remover** tool can be found in the dropdown list for the **Clone** tool group on the **Tools** toolbar.



Once you activate the **Scratch Remover** tool, you will see on the **Tool Options** palette that there are two presets you can try: **Large scratches** or **Small scratches**. You can also choose to set your own properties for the **Width** and **Selection boxes**.

Choose either the **square edge** or **beveled edge** option to define the shape of the **Selection boxes** of the **Scratch Remover** tool.

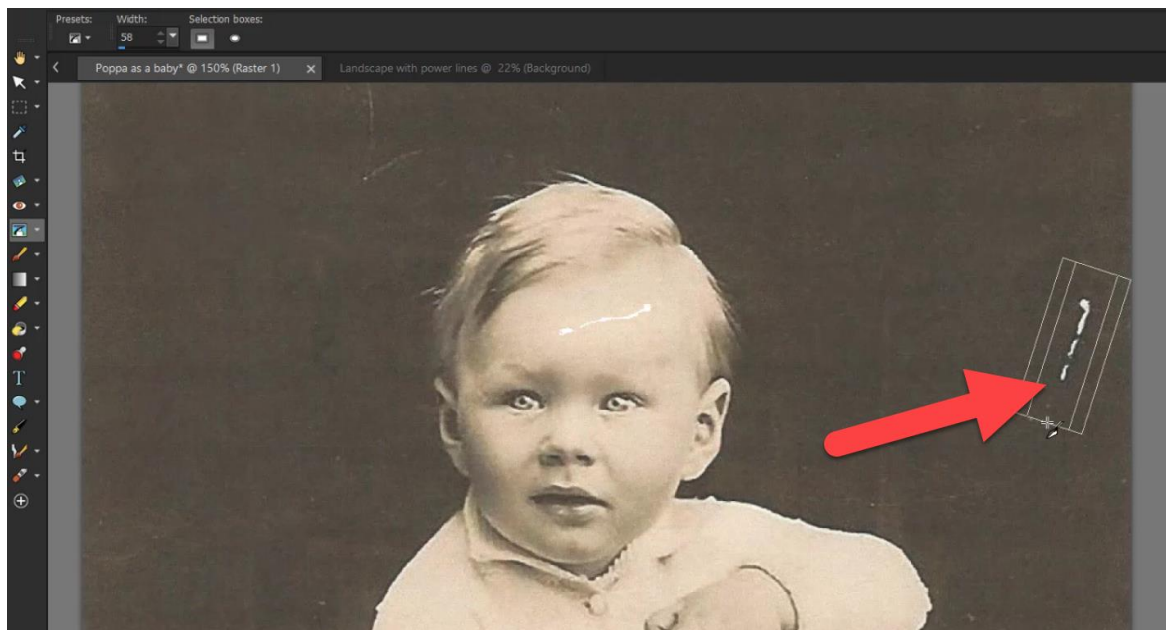
The **Square edge** corrects scratches that are perpendicular to object edges whereas the **Beveled edge** corrects scratches that are at an angle to object edges.



How to Remove Scratches and Cracks from Old Photographs

With your photo open and the **Scratch Remover** tool active, simply position the pointer just outside the scratch on one end. Then hold down the left mouse button and drag to set a selection box over the scratch. The scratch contained in the inner zone will be replaced by content in the outer zone.

NOTE: If the background is relatively smooth, the result is usually satisfying. Scratches on a textured or more complex background may be more effectively removed with the **Clone Brush** tool. To learn more, watch our full tutorial [Using the Clone Brush](#).

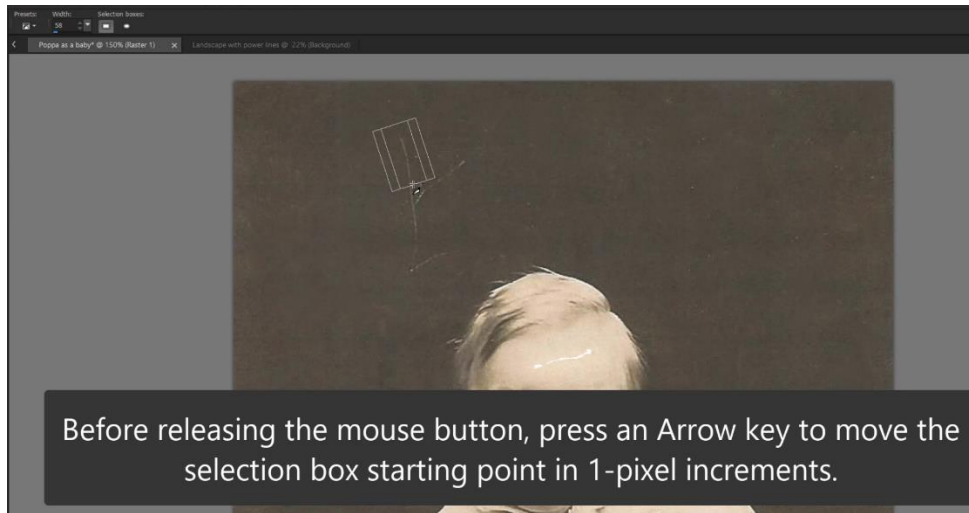


Release the mouse button and you can see that the scratch has been removed as the enclosed area is replaced with the surrounding pixels.



Repeat this process with all the scratches you wish to remove from your photograph.

TIP: You can move the selection box starting point in 1-pixel increments. After you hold down the left mouse button and drag to set your selection box over the scratch, press an **arrow key** before releasing the mouse button.



You can increase or decrease the width of the selection box in 1-pixel increments by pressing **Page up** or **Page down** before releasing the mouse button as well.



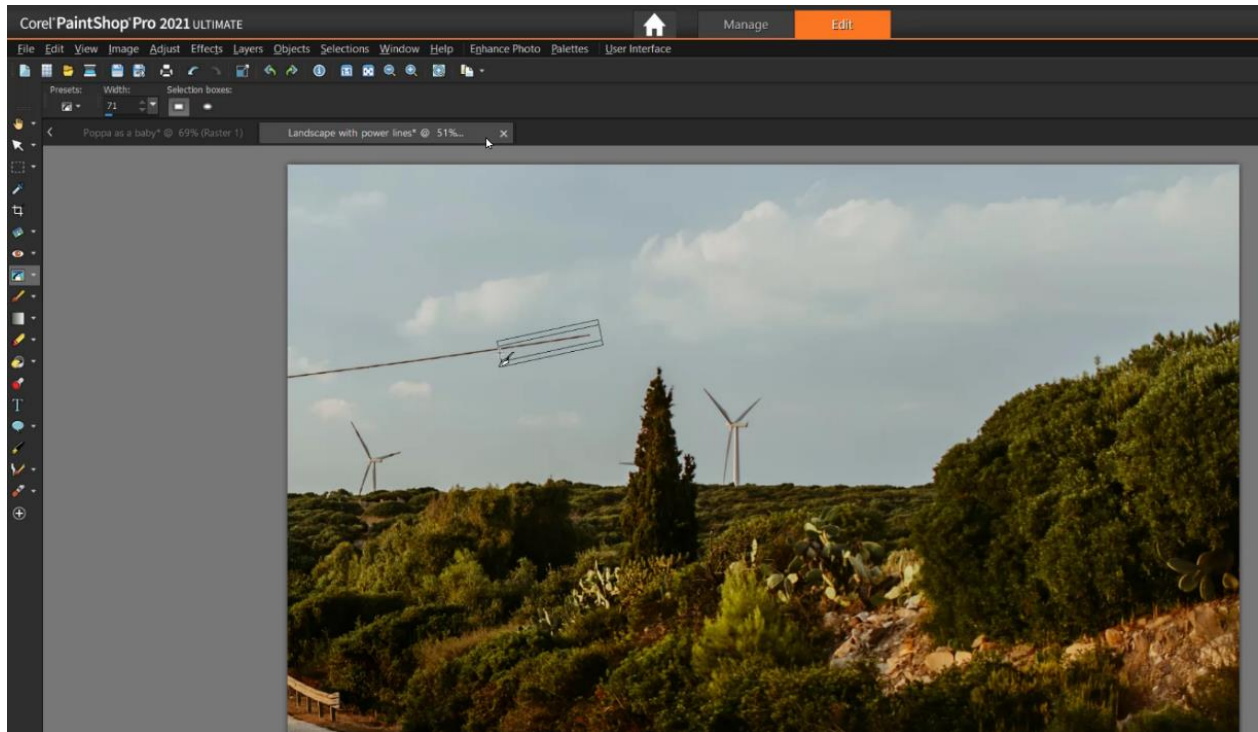
How to Remove Other Unwanted Linear Elements Using the Scratch Remover Tool

You can use this same technique to remove other unwanted linear elements from your photos. For example, I have this landscape photograph and I want to remove the power lines from the shot.



The process is the same as removing scratches. Use the **Scratch Remover** tool to draw a selection box over the lines you want to remove, and release your mouse to remove the lines, repeating this process until all the power lines have been removed.

TIP: when trying to remove a long line, it is best to remove small sections bit by bit.



The **Scratch Remover** tool is an easy way to restore your old photographs and perfect other photos by removing unwanted elements.

