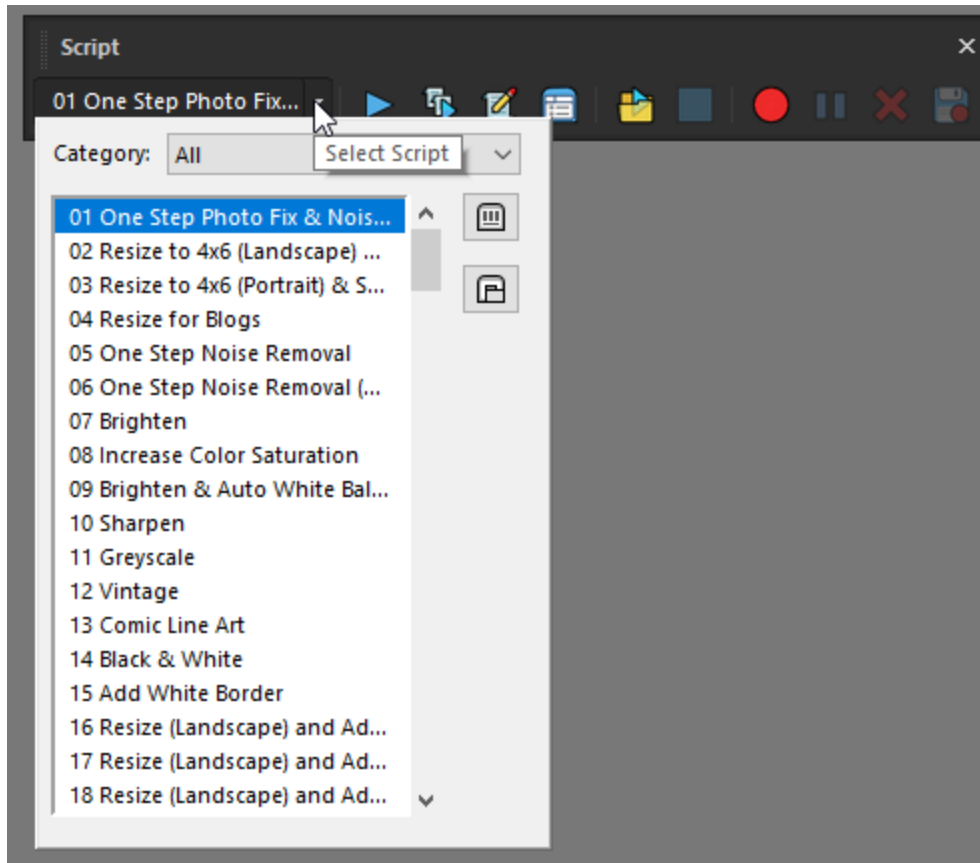


# PaintShop Pro Q and A Session 1

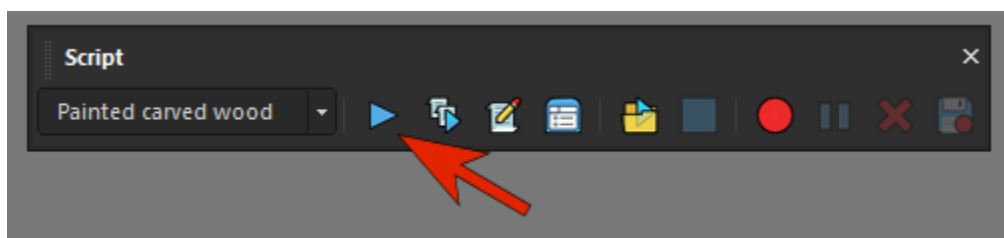
## Can I run actions (scripts) in PSP and if so, how?

In PaintShop Pro, actions are called scripts. Scripts are like mini-programs that will automatically apply a series of effects or adjustments to your photos.

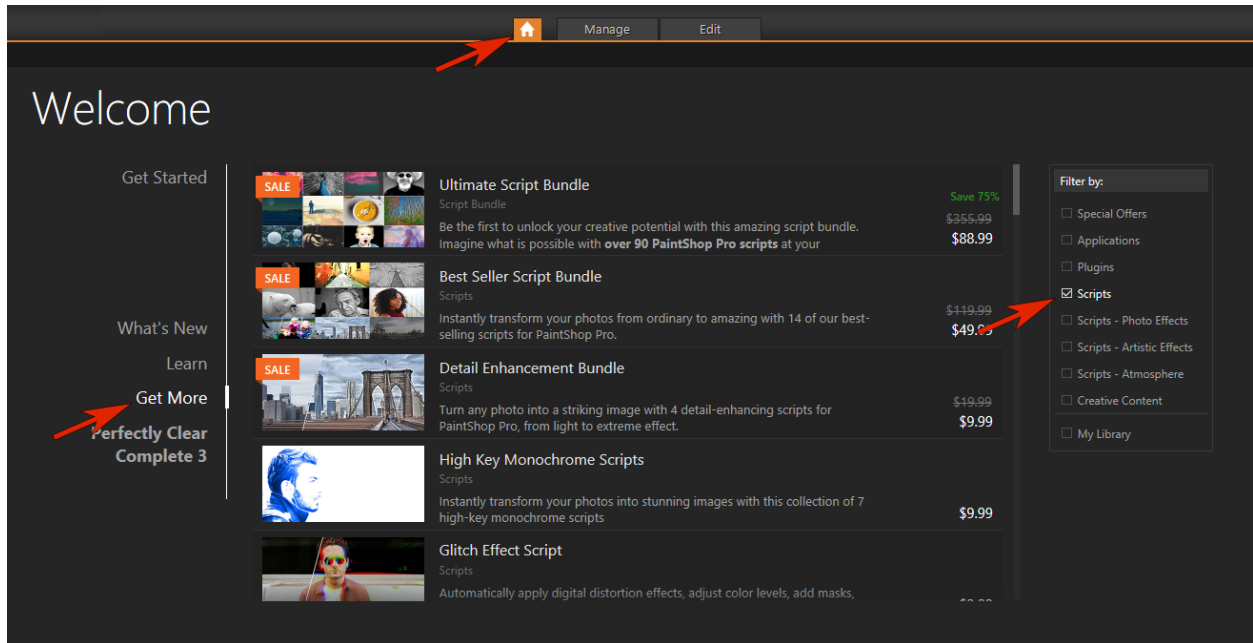
Scripts are run from the **Script** toolbar, which you can open by going to **View > Toolbars > Script**.



All you need to do is choose the script you want and click the **Run** button.



PaintShop Pro includes a number of scripts that are already installed. To get more scripts, go to the Welcome Screen, click **Get More**, and filter the list to show only Scripts.



Learn more about using scripts in this full tutorial [How to Use Scripts](#).

## How do I install and use the free version of GRFX Studio that comes with PaintShop Pro 2020 Ultimate?

The Corel edition of GRFX Studio is included with PaintShop Pro 2020 Ultimate. To launch it on an open image, go to **Effects > Plugins > AutoFX Software > GRFX Studio Corel Edition**.

If it is not listed under the **Plugins** menu, you can install and activate GRFX Studio manually. In Windows go to C:\Program Files (x86)\Corel\Corel PaintShop Pro 2020 Setup Files and open the **Autorun.exe** file. On the window that opens, click to **Install GRFX Studio**.

# Corel® PaintShop® Pro 2020 ULTIMATE

INSTALL Corel PaintShop Pro 2020  
INSTALL Corel PhotoMirage Express  
INSTALL GRFX Studio (64-bit)  
INSTALL Corel Painter Essentials 6 (64-bit)  
INSTALL Corel AfterShot 3 (64-bit)  
INSTALL Ultimate Creative Collection  
EXIT



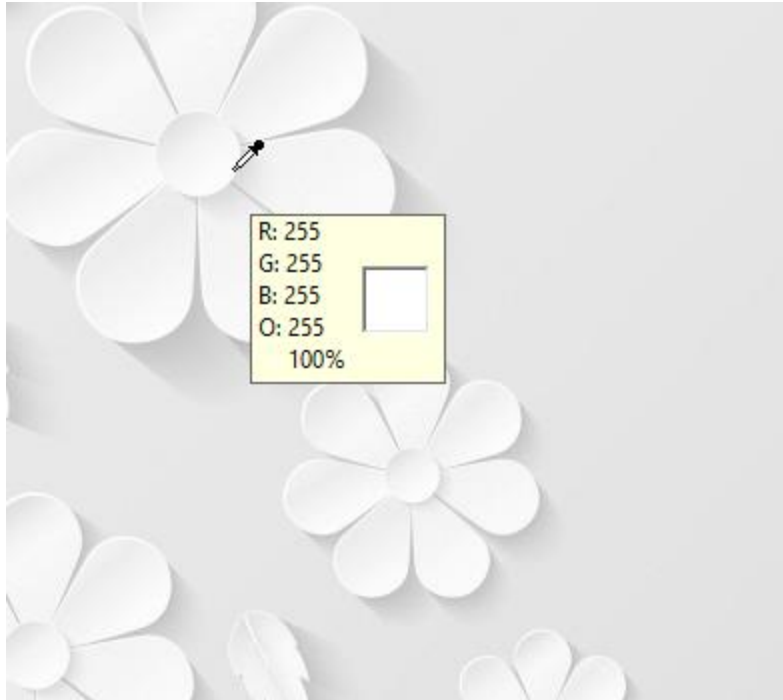
## How to Activate GRFX Studio Corel Edition:

- Open GRFX Studio Corel Edition either from the shortcut on your Desktop, or by clicking Start > GRFX Studio Corel.
- Enter your email address in the field and click **Continue**.
- Enter your activation code from the email and click **Activate Software**.
- GRFX Studio will confirm the activation with a message **Activation successful!** Click **OK** and now the plugin should be available in the **Effects > Plugins** menu.

Learn more about GRFX Studio in our full tutorial [How to Use GRFX Studio](#).

## When I open PaintShop Pro, white spaces on the screen appear as yellow. How do I fix this?

The first thing to check is whether PaintShop Pro is identifying white correctly. Use the **Eyedropper** tool on the **Materials** palette to sample a yellow pixel you think should be white.



If the RGB values are all 255, which is white, then PaintShop Pro is working fine but you have a display issue. This is often caused by a loose connection between the monitor and computer, so check that first. If your monitor connection is fine, the second check is to make sure your video drivers are up to date.

### I have a hard time getting extra content, such as scripts or brushes, to appear in the right place when I upgrade to a new version of PaintShop Pro.

All your extra content such as scripts, picture tubes, picture frames, brushes, etc. should work not only in the version that was active when you purchased the content, but in later versions as well.

The easiest way to import all your old content into your new version is to choose **File > Import > Content from Previous Versions**. This brings in everything from the past three releases that was installed into the default folders.

If you need to migrate content from versions that go farther back than three releases, then you can find that content and copy your files manually from the older version folders to the new version folders.

Content is usually stored in these locations (replace highlighted fields with your name and version number):

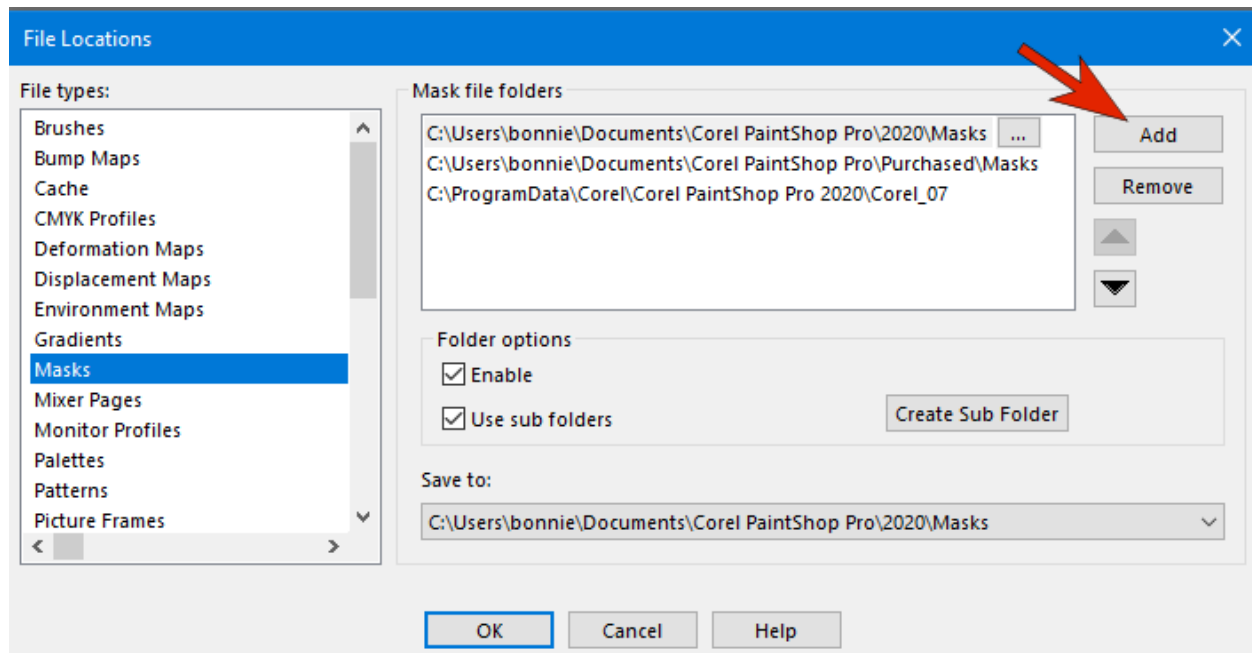
C:\Users\YOURNAME\Documents\Corel PaintShop Pro\VERSION#

C:\Program Files\Corel\Corel PaintShop Pro VERSION#\Languages\EN

C:\ProgramData\Corel\Corel PaintShop Pro VERSION#

If you have content you've placed in locations other than the default folders, you can direct PaintShop Pro to look in those folders. Go to **File > Preferences > File Locations** and select the content type you want (i.e. picture frames). In the file folders list you'll see all the folders that PaintShop Pro currently looks in to populate content libraries. Click on the 3 dots to browse and select a new folder, click **Add** then **OK**.

**IMPORTANT!** You must be using the **Complete** workspace in PaintShop Pro 2018 and higher in order to access **File > Preferences > File Locations**.



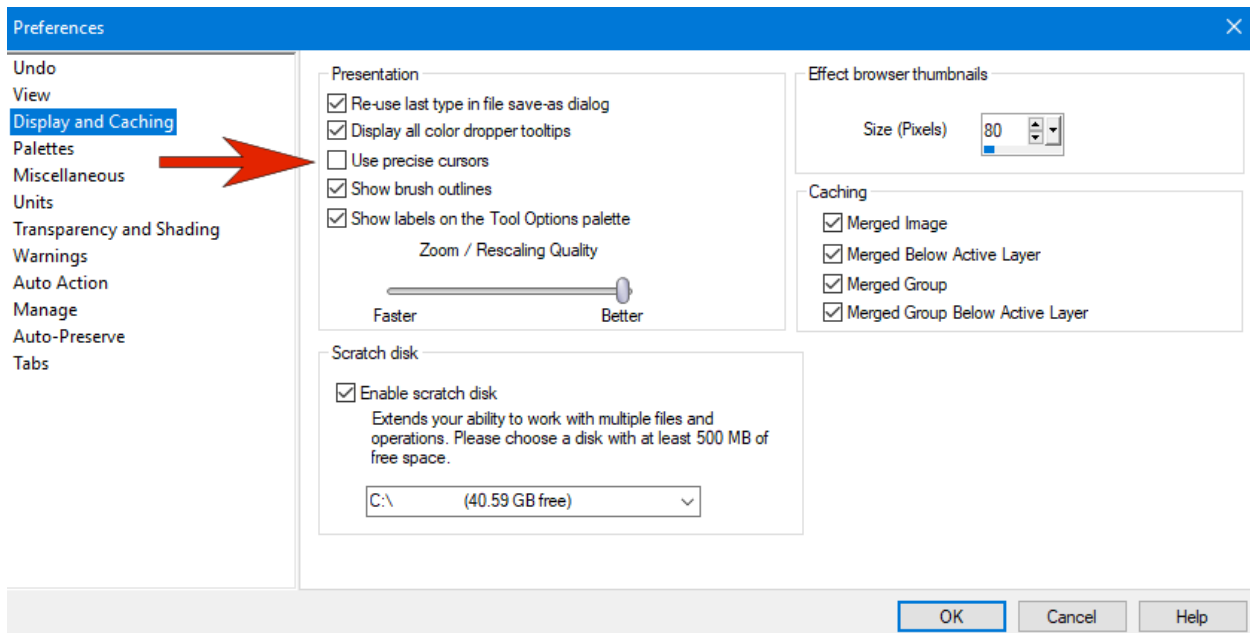
For some tools, my cursor shape is a cross-hair symbol. How do I change this back to normal?

If your cursor shape has changed to a cross-hair symbol, it means that **Precise Cursors** have been enabled. Some users prefer this setting when they're working in very fine detail.

With **Precise Cursors**, there is a cross-hair on your cursor when using the Selection tools, Background Eraser, Paint Brush, etc.



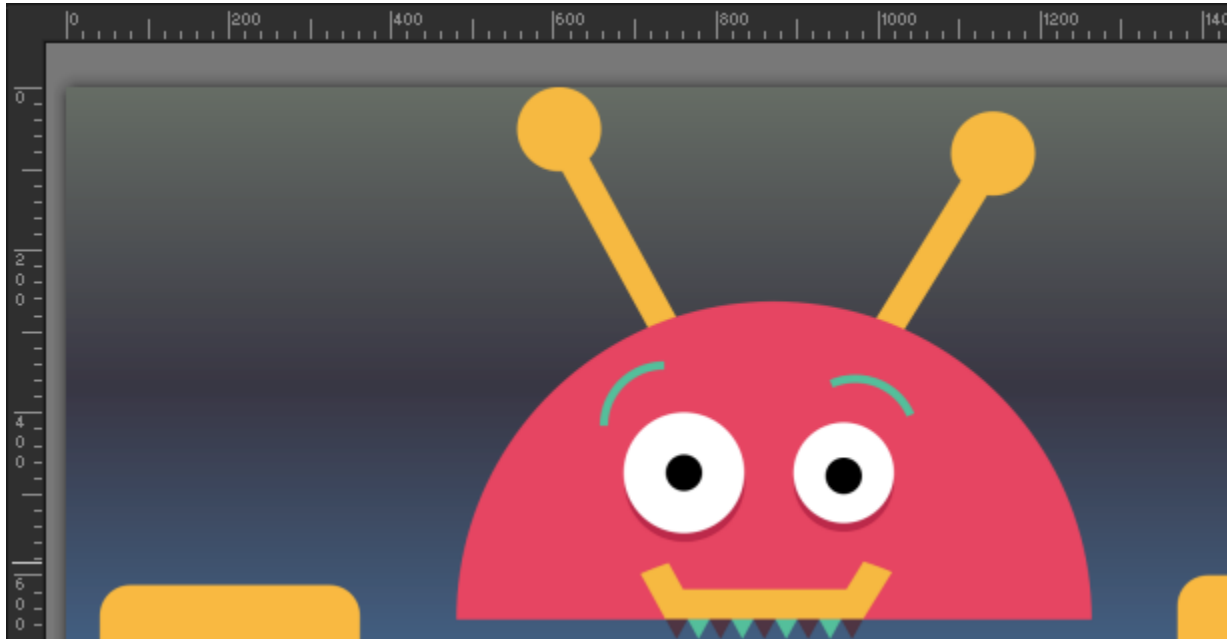
To turn this off, go to **File > Preferences > General Program Preferences > Display and Caching**, and uncheck **Use Precise Cursors**. Click **OK** and your cursors will be back to normal.



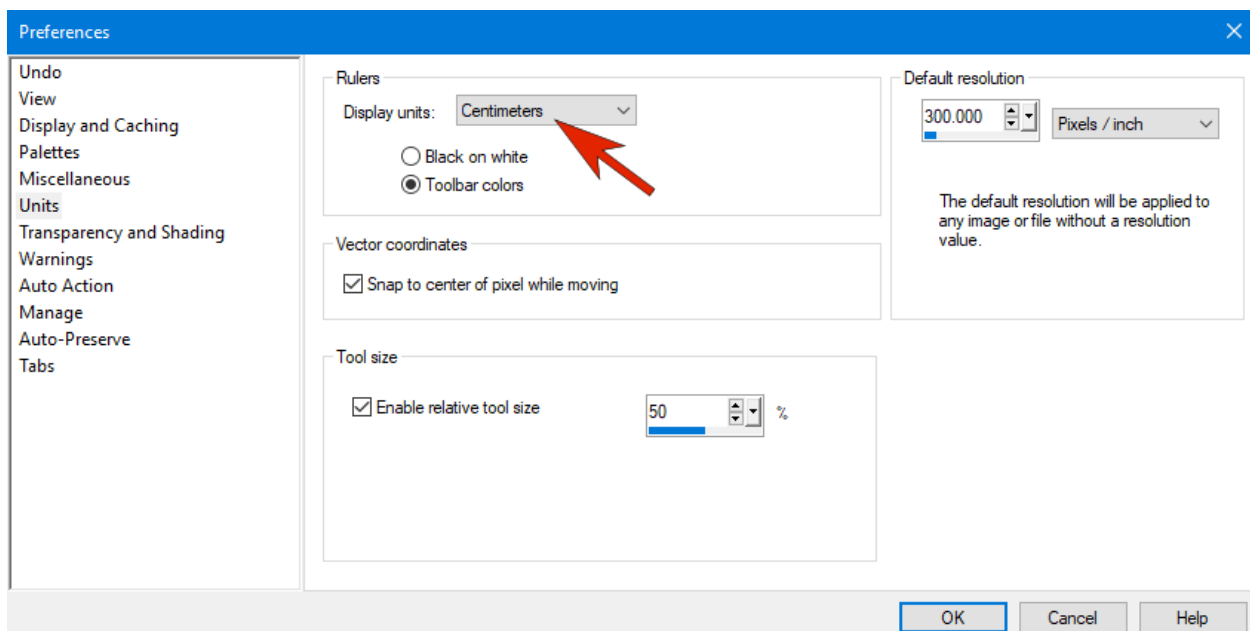
## How can I create shapes, such as an ellipse, in specific units?

PaintShop Pro works in pixels - these are the values that appear at the lower right corner. But sometimes you may need to create a rectangle in inches or a circle in centimeters.

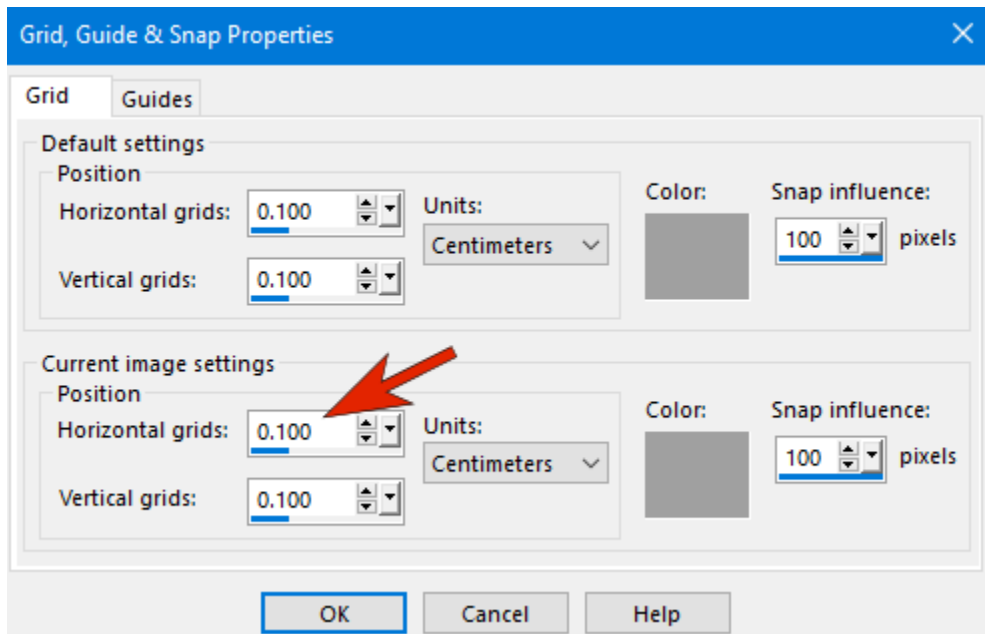
First, go to **View > Rulers** to display the ruler guides, which use pixels as the unit of measure.



To change the units of measure, go to **File > Preferences > General Program Preferences > Units**. Under **Rulers**, change the **Display Units** setting to centimeters and click **OK**.

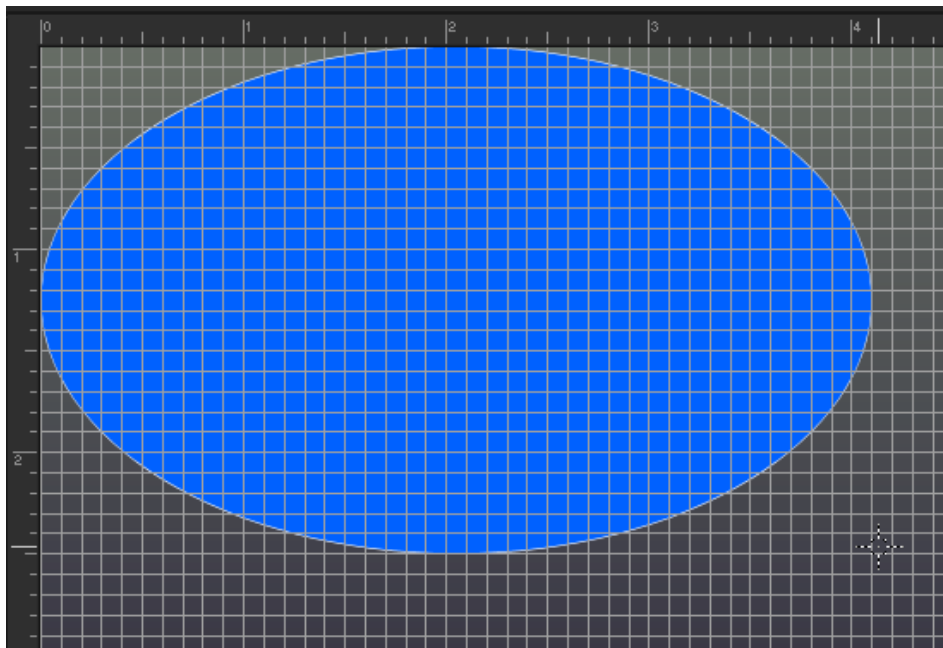


Under the **View** menu, click on **Grid** to display the grid and then click on **Grid, Guide & Snap Properties**. In the window that opens, go to the **Current Image Settings** section, and change the **Units** to centimeters. You can then change the settings for the **Horizontal** and **Vertical grids**. For example, if you set 0.1 for horizontal and vertical grids, this means 10 grid spaces per centimeter, or in other words, each grid square is 1mm x 1mm.



Under the **View** menu turn on **Snap to Grid** as well.

Now when you use the **Ellipse** tool to create an ellipse of a specific size, just click and drag to create the shape using the rulers and grid lines as guides and the shape will automatically snap to the grid lines.

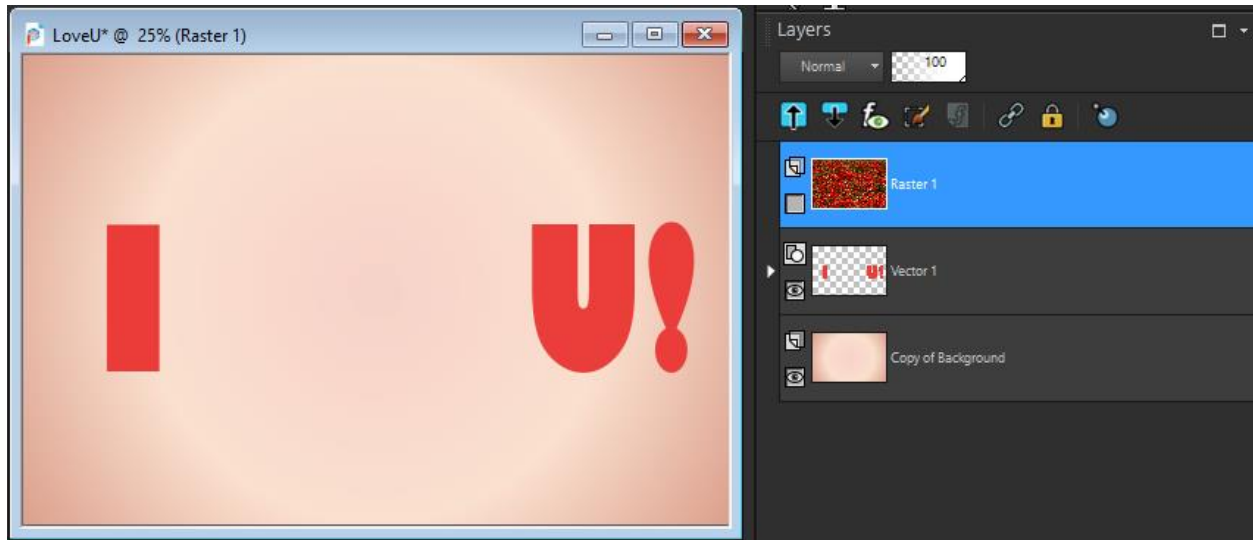




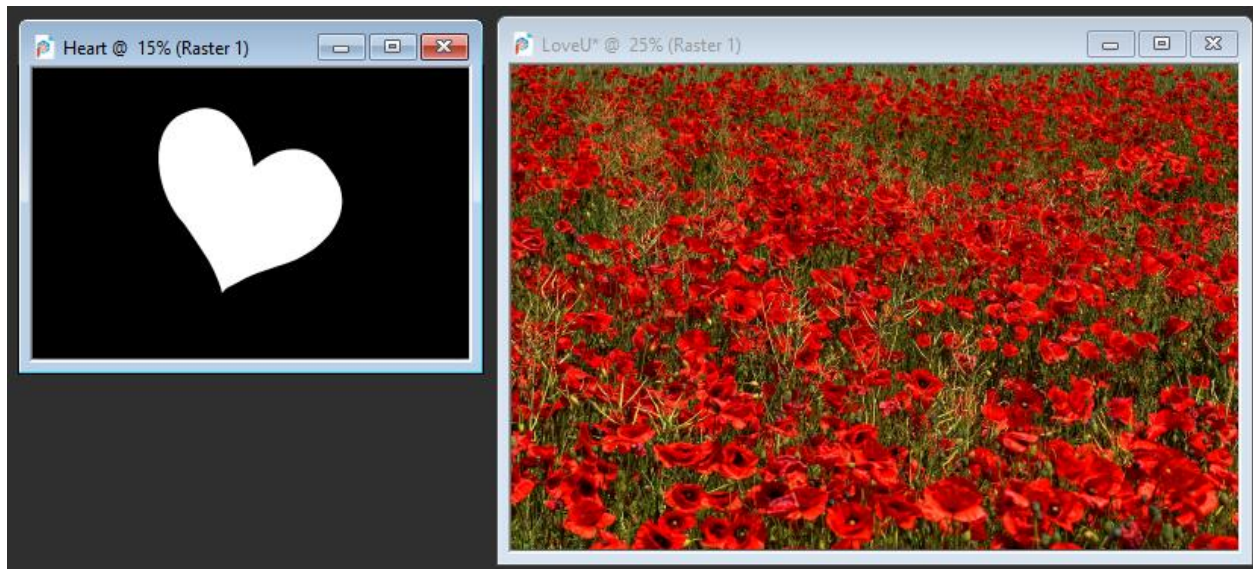
## How do I clip layers?

Clipping is done with a mask. There are lots of mask options, but we'll look at just two examples.

This image has 3 layers: a top layer with an image of flowers, a middle layer with text and a bottom layer with a gradient fill.

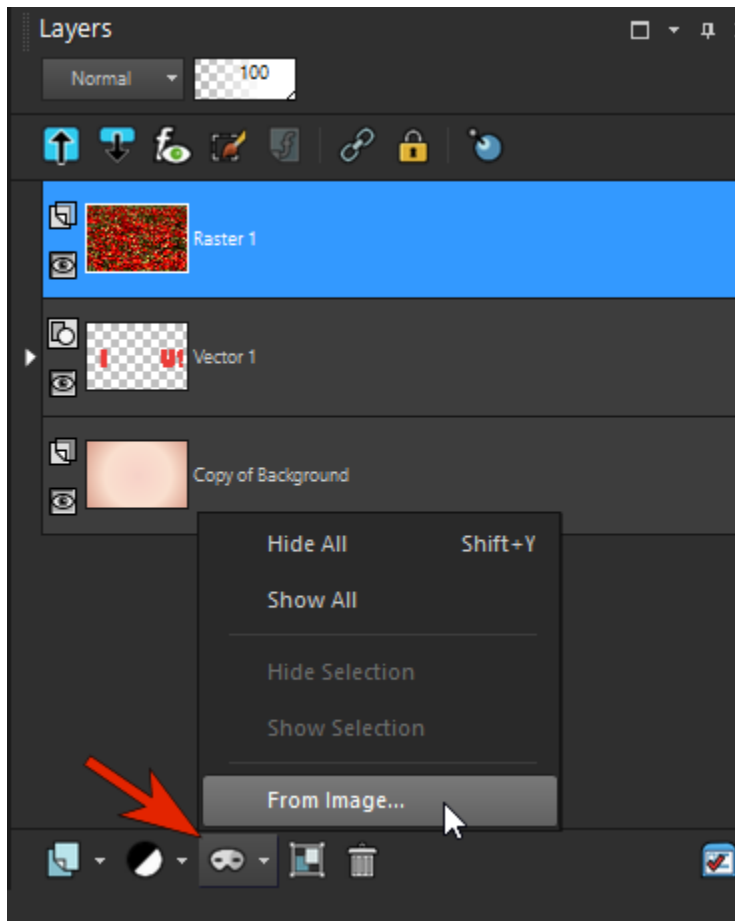


We also have another image open that is a heart shape. The goal is to clip the flowers using the heart shape.

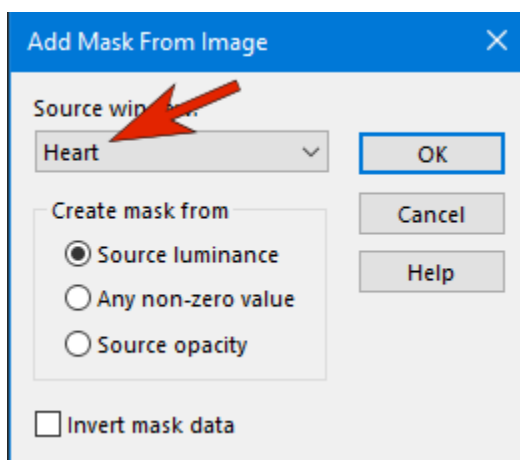


In the heart image, black is what will become blocked, and the white parts will show through.

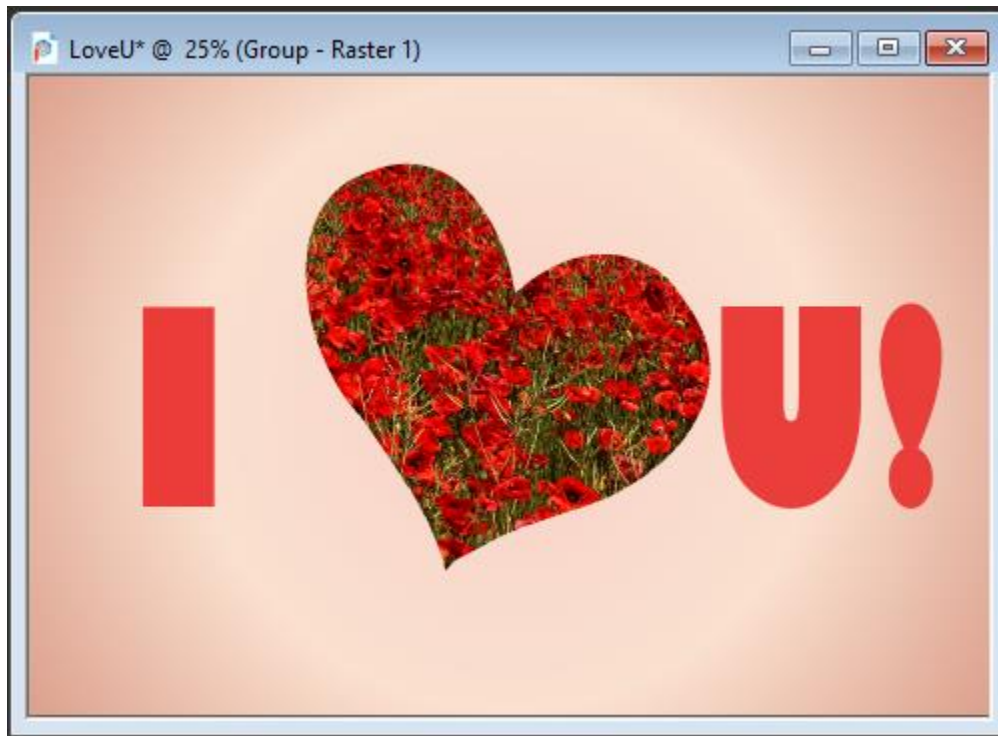
With the flower layer selected in the **Layers** palette, click the **New Mask Layer** icon and choose **From Image**.



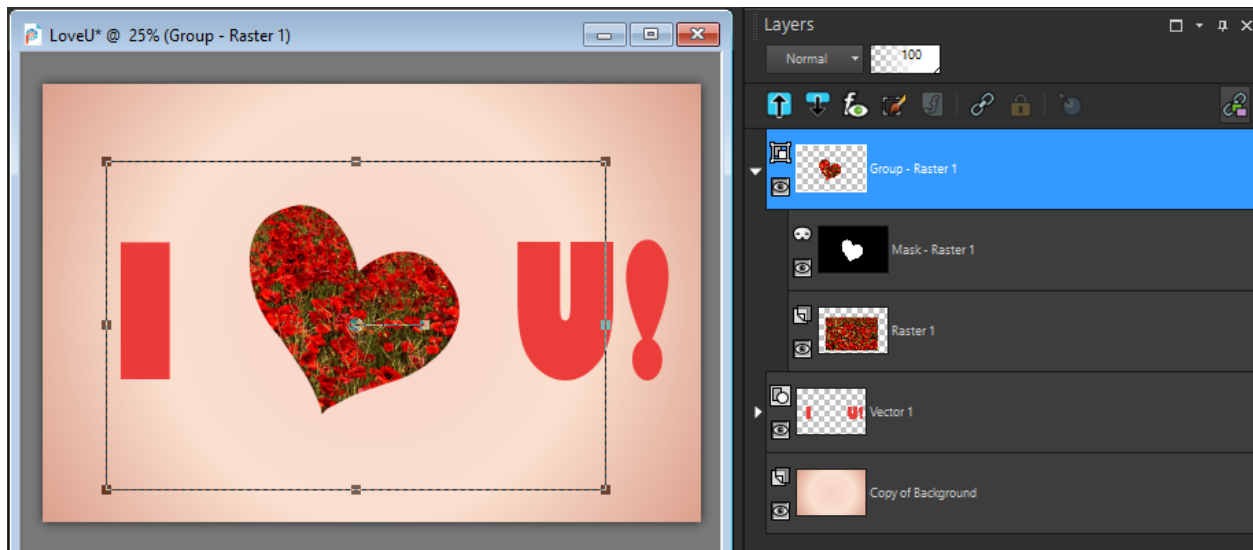
In the **Source Window** dropdown, choose the heart image and click **OK**.



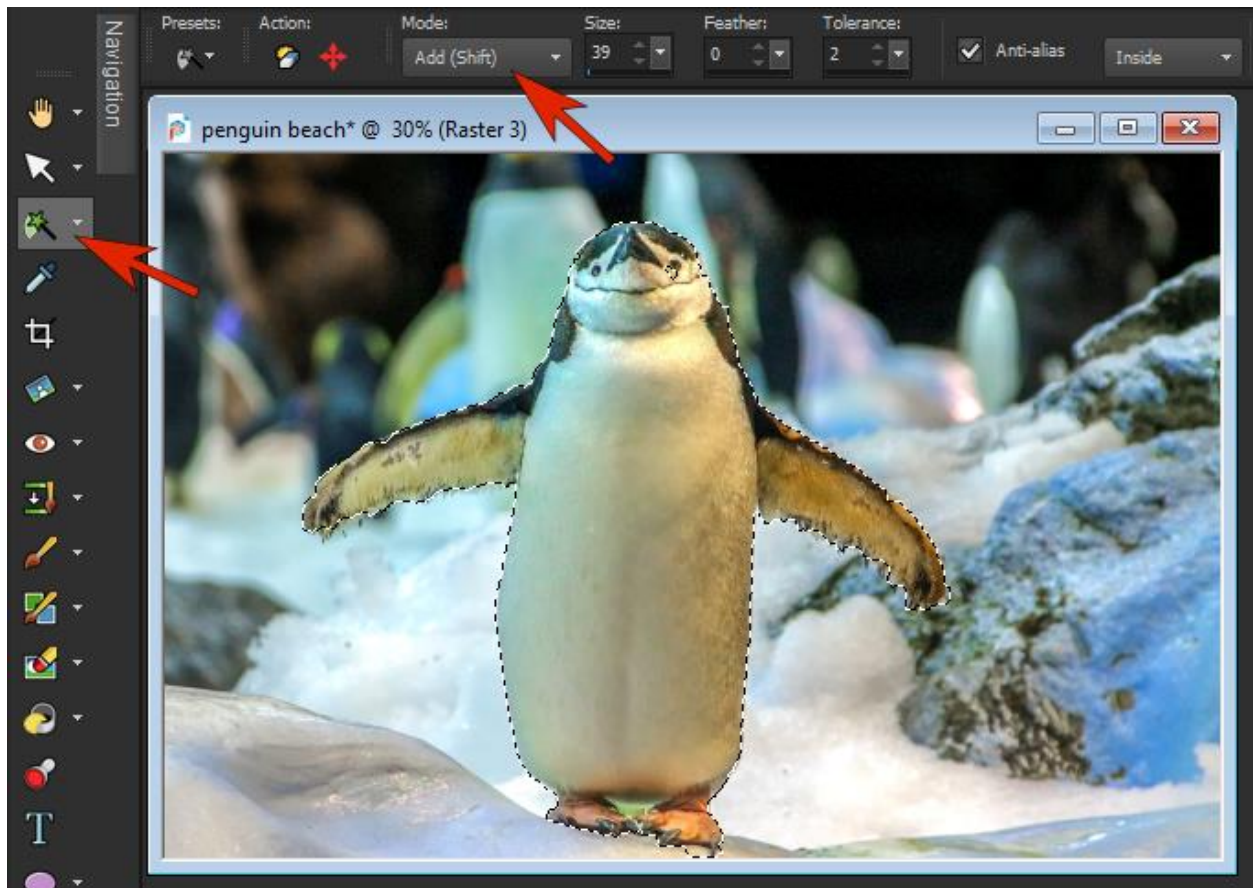
Now the flower layer is clipped to the heart shape.



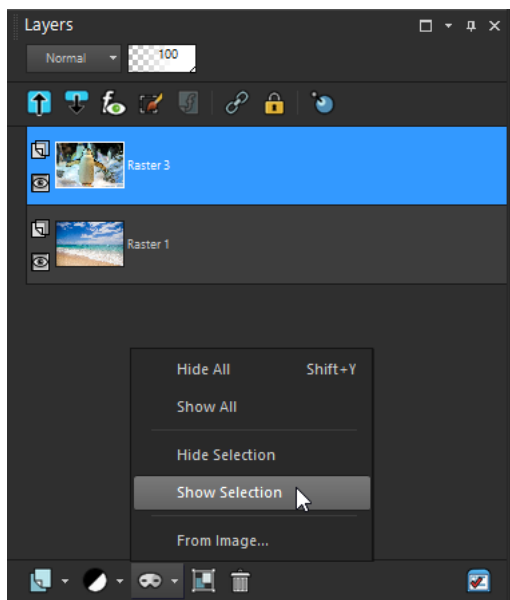
With the mask group layer selected in the **Layers** palette, you can use the **Pick** tool to move the heart flower mask into place and resize if necessary.



In the second example we have a chilly looking penguin above a beach background layer. With the **Smart Selection Brush** set to **Add** mode, select the bird, trying to be as exact as possible.



Click the **New Mask Layer** icon at the bottom of the **Layers** palette but this time choose **Show Selection**.



This will mask out the winter background outside of the penguin selection, allowing the beach background to show through and now this lucky penguin gets to leave the wintry weather behind.



Learn more about masking in our tutorial series [Working with Masks](#).

[Visit our web page](#) to submit your own PaintShop Pro question to be answered in a future video.