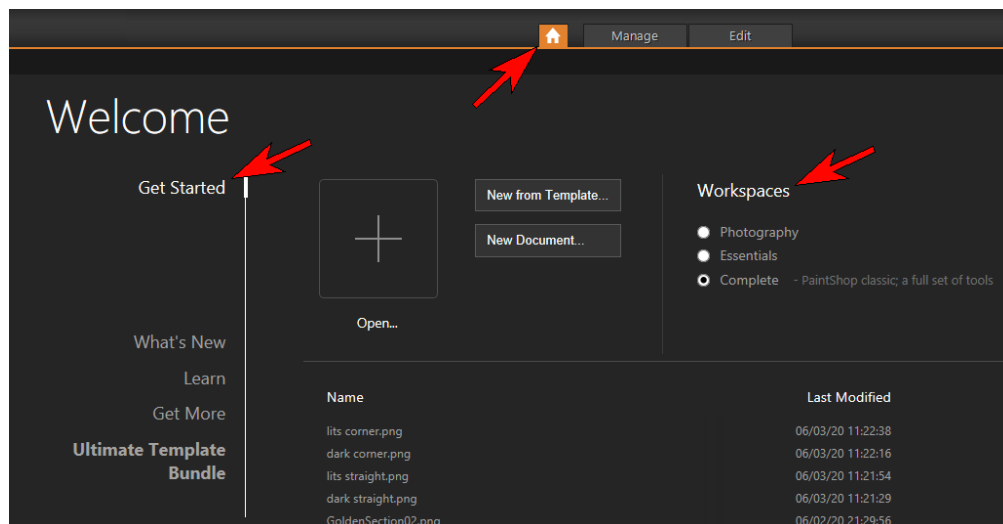


I upgraded from an earlier version and I am so lost. Why can't I open multiple photos in the same workspace? Why can't I drag a layer into the workspace and save it as a new image?

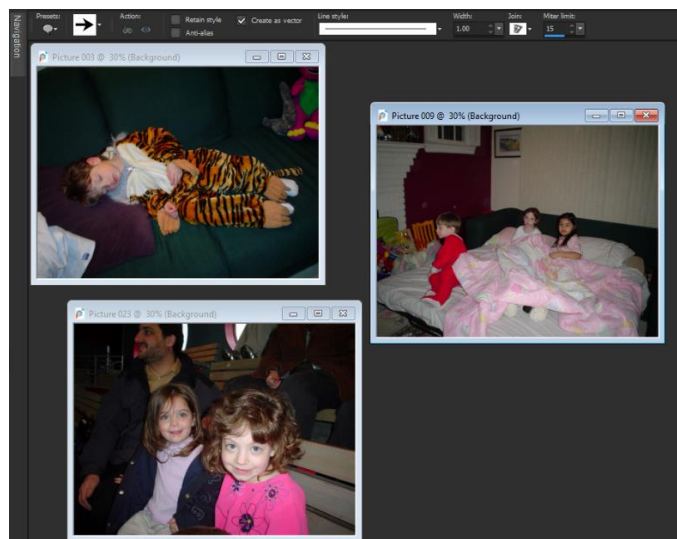
We often get questions from users who have upgraded from an older version of PaintShop Pro and find the workspace unfamiliar, or can't find some of the tools they are used to. This is usually because they are using one of the new workspaces - **Photography** or **Essentials**. You can switch to the **Complete** workspace by going to **File > Workspace** and choosing **Complete**.

You can also select your preferred workspace on the **Get Started** tab in the **Welcome Screen**.



Once in the **Complete** workspace, you will find the layout and tool placement that you are familiar with.

To open multiple photos in the same workspace, make sure **Tabbed Documents** is NOT checked under the **Window** menu. This will allow you to see all your open images in the same workspace.

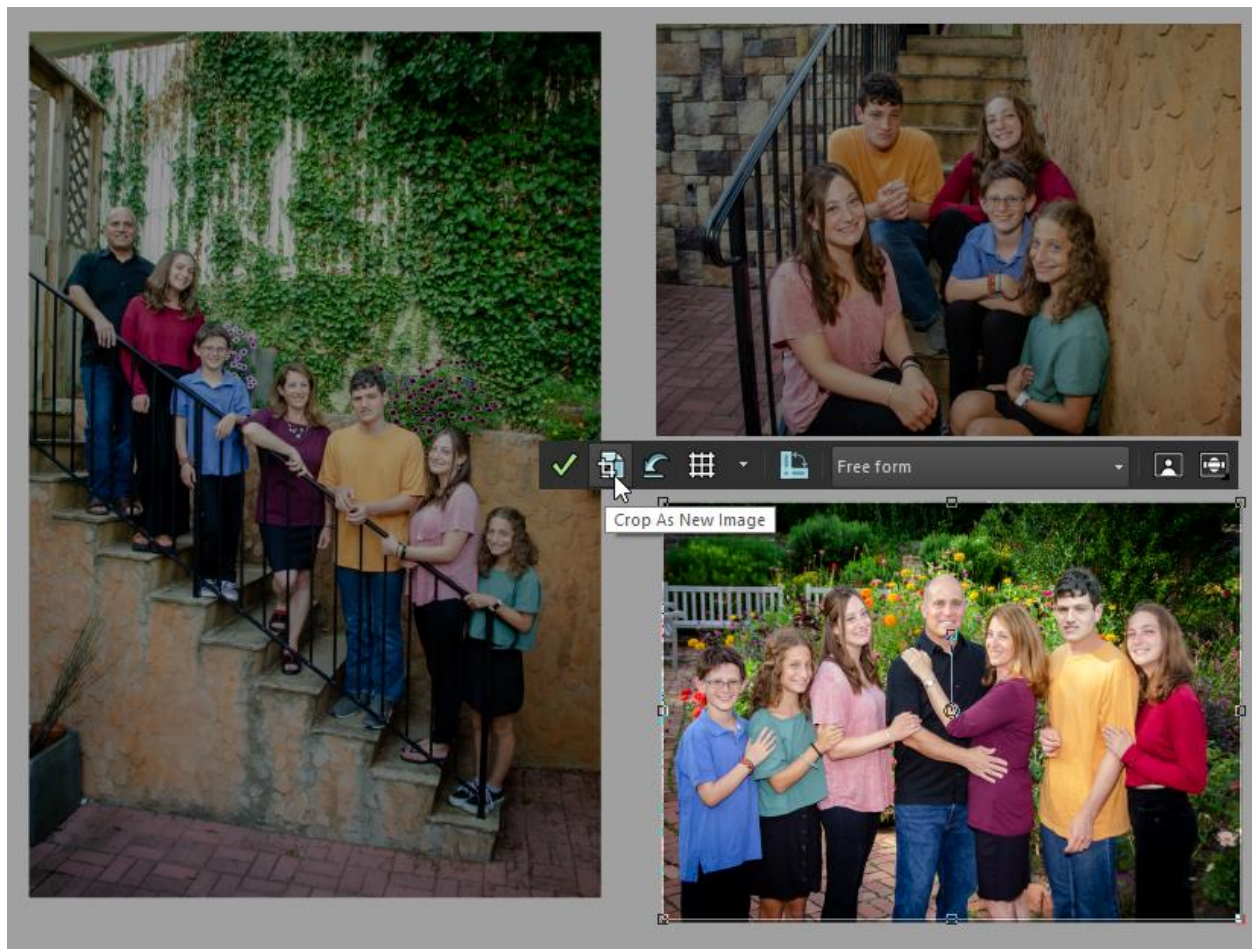


As long as you are not using **Tabbed Documents** view, you can drag a layer from the **Layers** palette onto a blank space in the workspace to create a new image.

How can I cut apart a file of scanned images to save them individually?

To cut apart a file that contains multiple images, you can use one of the features of the **Crop** toolbar to make new images from each photo.

Activate the **Crop** tool, drag out the area you want to crop, and click **Crop as New Image**.

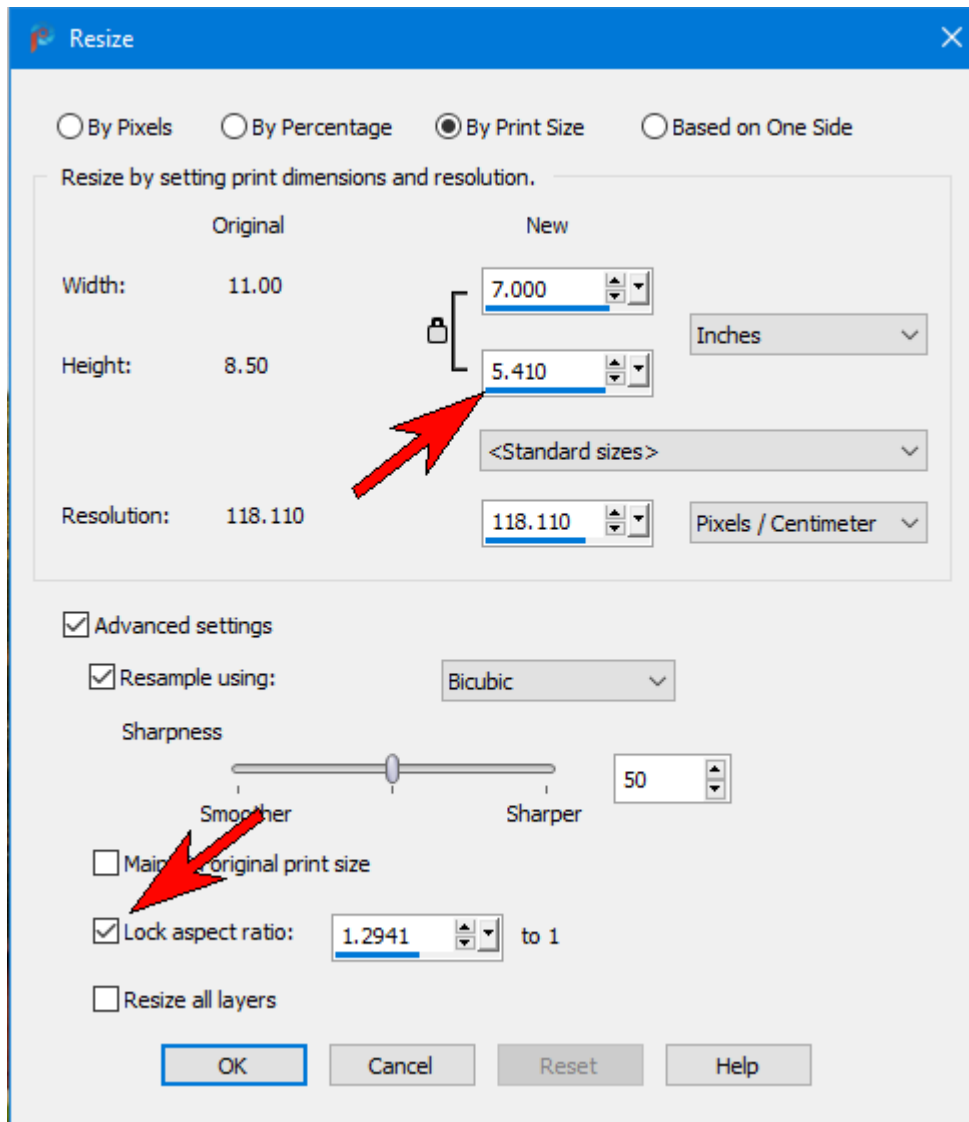


I have 8.5 x 11 photos that I've scanned and touched up. How can I print these at 5 x 7?

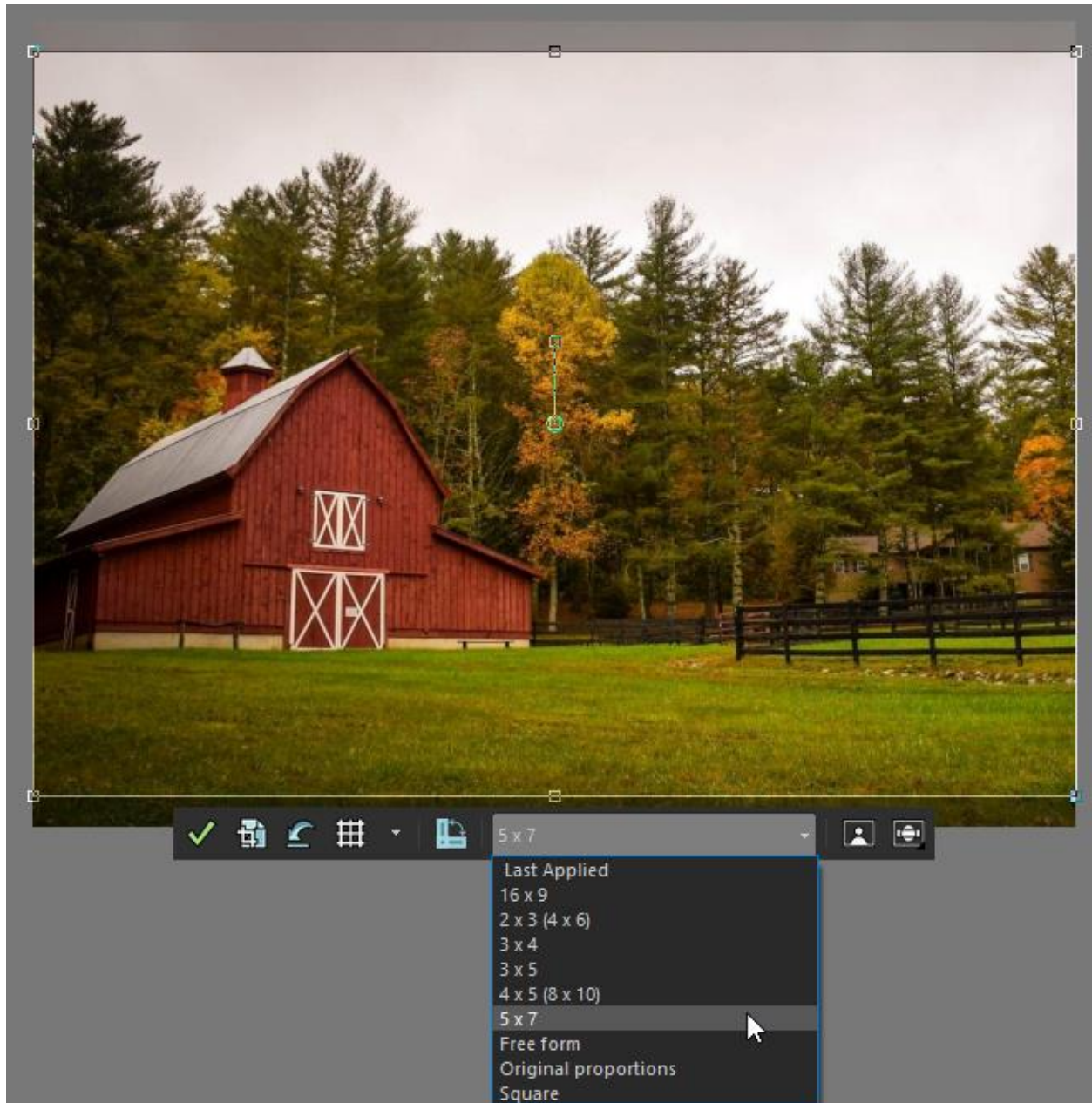
To print to a different size than the original, go to **Image > Resize**. Choose the **By Print Size** option along the top. The original size is displayed along the left, in inches by default. You can enter a new width and height or click on the **Standard Sizes** dropdown list and select the print size you want.

NOTE: If you resize your photo with dimensions that are not proportionate to your original image, the aspect ratio will not be preserved, and this could result in your image being distorted.

If you want to avoid any distortion, make sure that **Lock Aspect Ratio** is checked in the **Advanced Settings** section. Now when you enter a new width, the height will adjust accordingly.



Click **OK** and the image will be resized. Activate the **Crop** tool and select the **5x7** print size from the presets dropdown list. If necessary, you can move the crop area to change which parts of the image will be cropped. Then check the green **Apply** checkmark to crop.



The following tutorials provide more information about cropping and resizing images:

[How to Crop Photos](#)

[How to Resize Images](#)

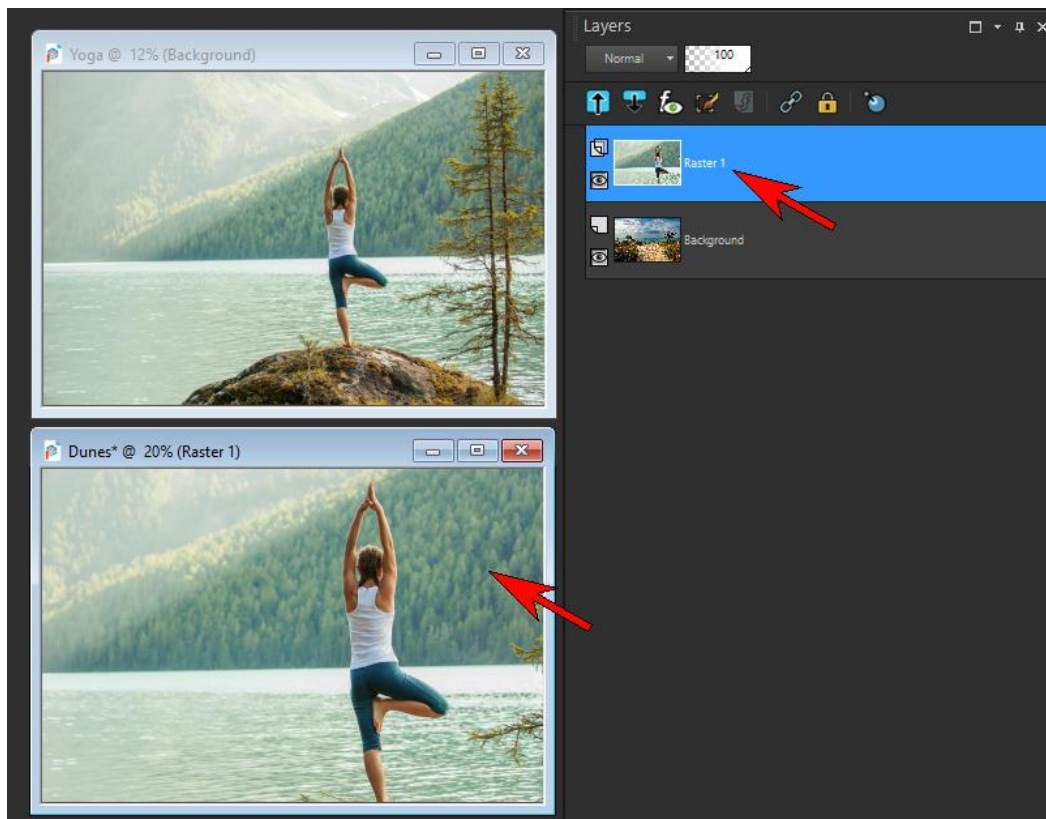
[Cropping Photos for Better Composition](#)

How can I merge two shots - one with me, and one with just the background?

The simplest way to combine a photo of yourself with a new background photo is to use the **Background Eraser** tool. For example, we'll place the person in the photo with the mountain lake background onto the Dunes background in the other photo.



With both photos open in PaintShop Pro, select the photo of the person and copy it onto the new background photo. You can do this by using **Ctrl + C** to copy and **Ctrl + V** to paste, or you can drag the photo of the person right into the **Layers** palette above the new background layer.

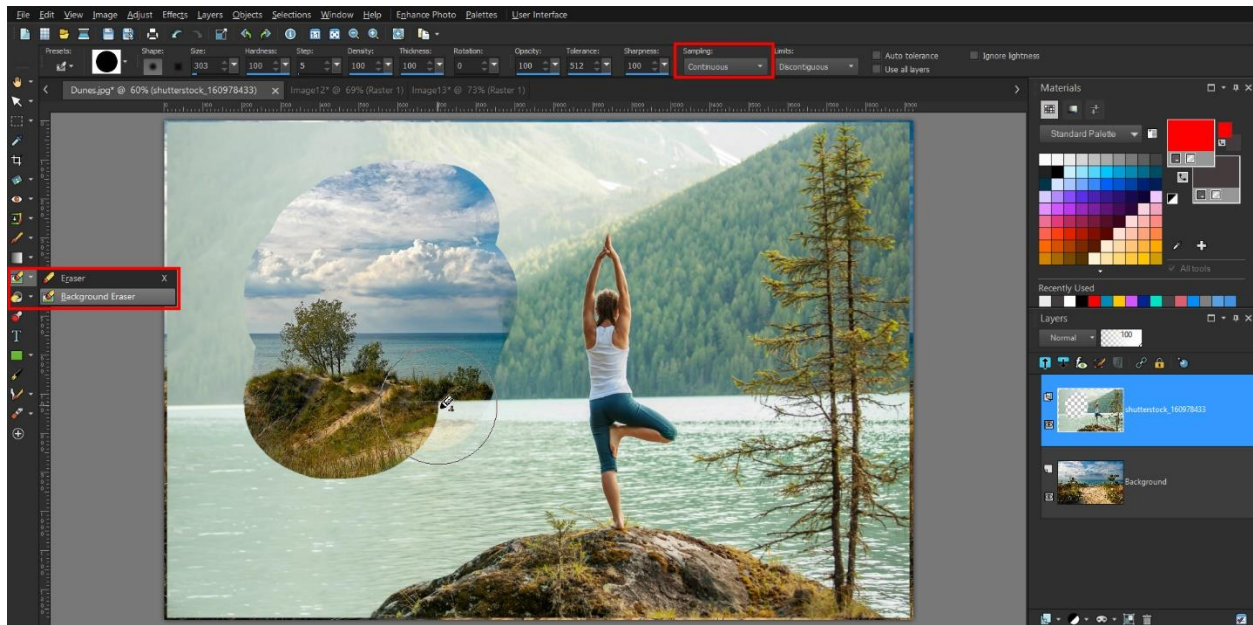


Use the **Pick** tool to resize or reposition the photo of the person if necessary.

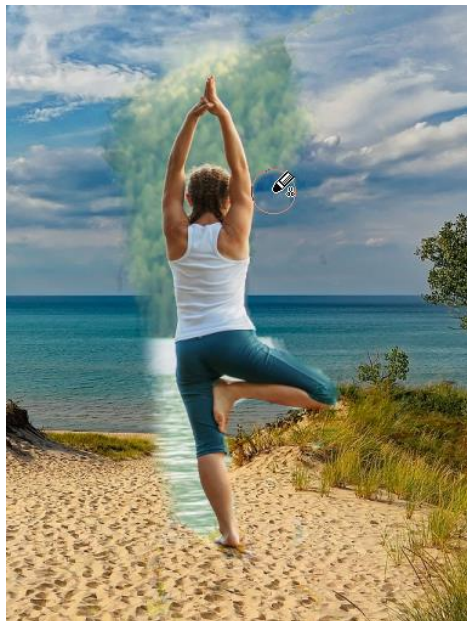
Make sure the photo of the person is the top layer in the **Layers** palette and click on it to make it the active layer you'll be working on.

Select the **Background Eraser** tool, which can be found on the left toolbar in the **Eraser** tool group flyout. You can change the brush size by holding down the **Alt** key while dragging up and down. On the property bar, set the **Sampling** to **Continuous**.

Now with a very large brush, erase most of background except the areas close to the person.



Then decrease the brush size and carefully erase all around the edge of the person.



TIP: it is best to erase in short segments, releasing your mouse in between. This way, if you make a mistake and have to undo, you won't lose all your erasing work.

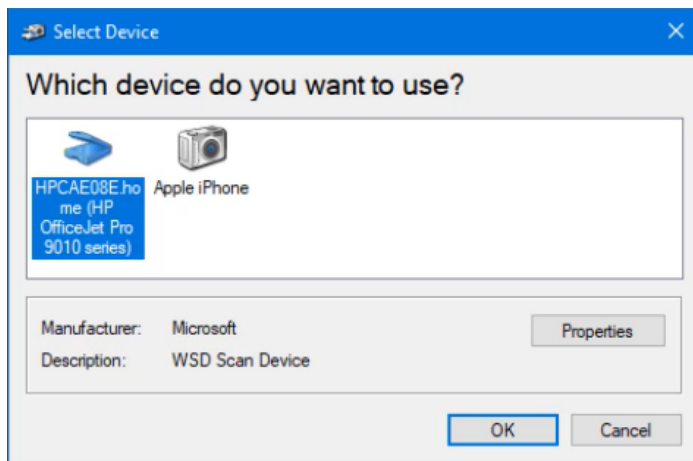
Once the background is fully erased, you can use the **Pick** tool to move or resize the person if needed.



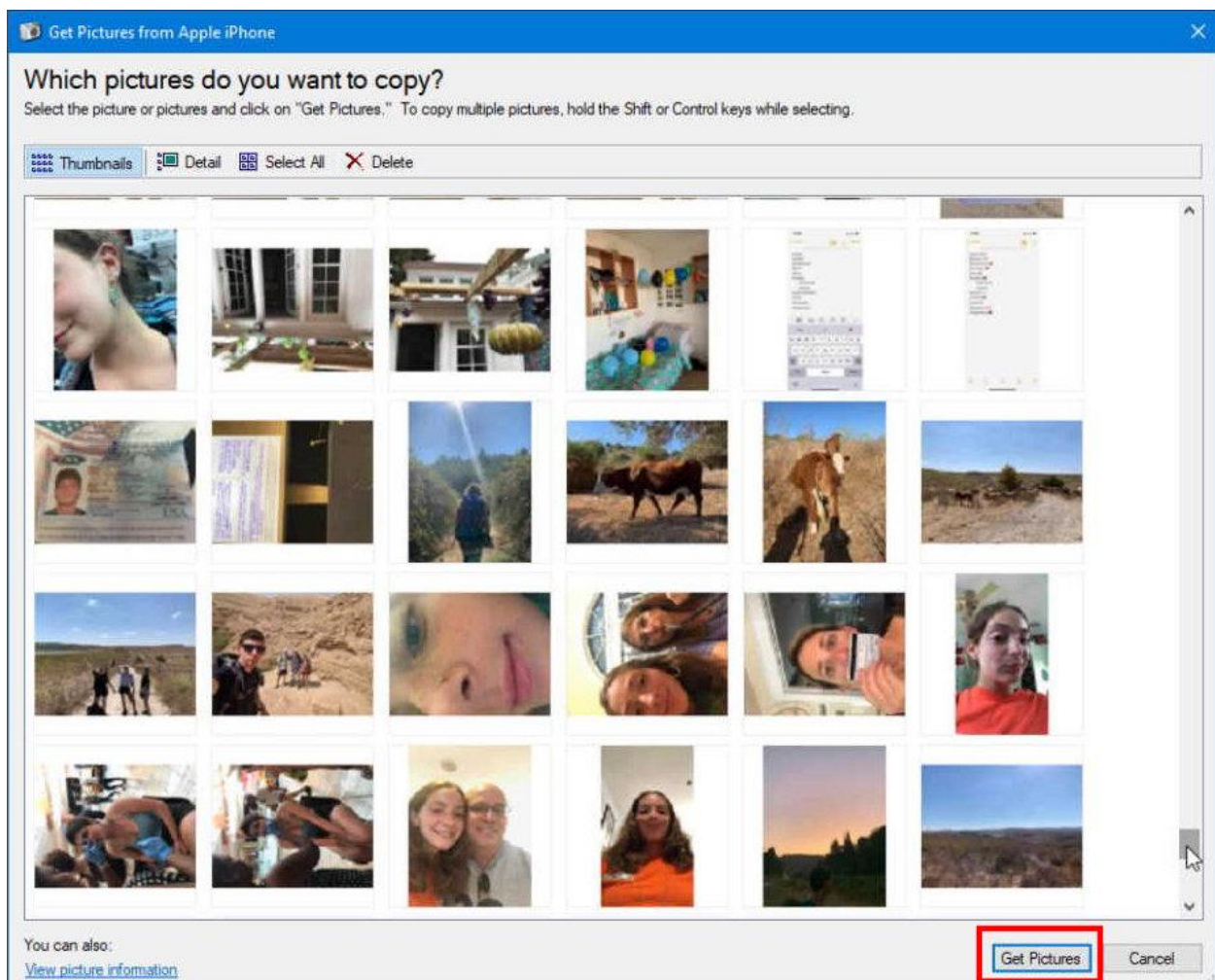
Learn more about background removal in our full tutorial [Creating Transparent Backgrounds with the Background Eraser](#).

How can I download pictures from my phone or camera into PaintShop Pro 2020?

If your photos aren't already uploaded to your computer, PaintShop Pro can bring them in directly. First, make sure that your phone or camera, or the memory card that has the photos is connected to your computer. Then choose **File > Import > From Scanner or Camera**.

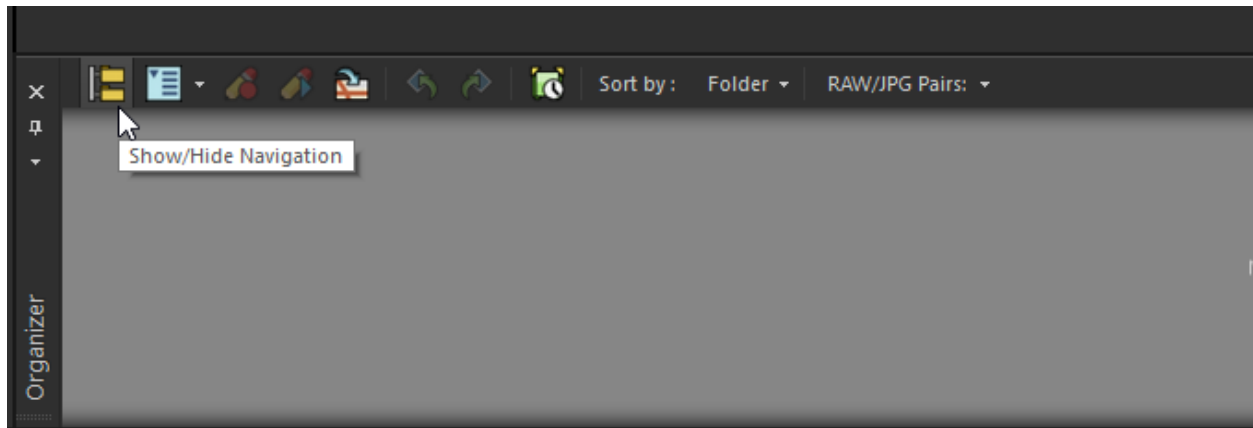


Choose the device to import from, click **OK**, and all the photos appear as thumbnails. Select the one you want or hold down **Ctrl** or **Shift** to select multiple photos, or click **Select All**. Then click **Get Pictures**.

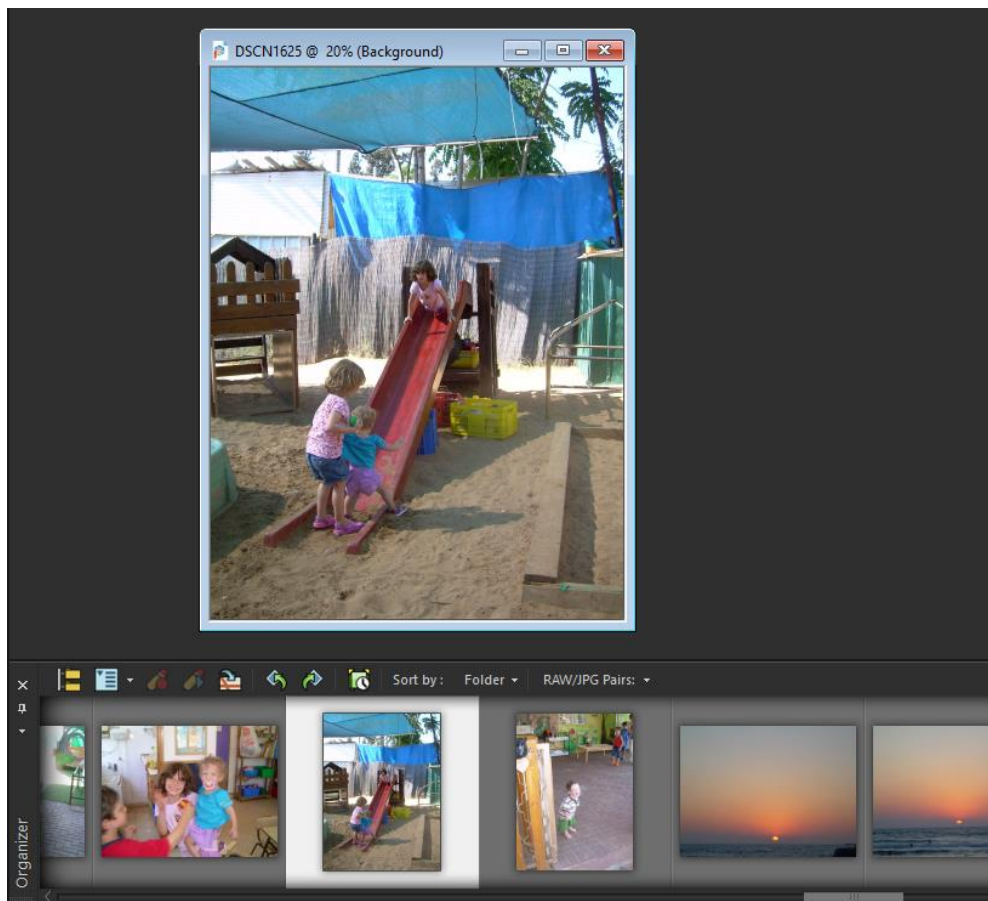


All the photos you selected will open in PaintShop Pro and you can use **File > Save As** to save photos to your computer.

Or, if you've already moved or copied photos from your camera into Windows, you can browse through that folder using the **Organizer** palette in PaintShop Pro. If the **Organizer** palette is not open, go to **View > Palettes > Organizer** or press **Shift + F9**. In the **Organizer** palette, click on the **Show/Hide Navigation** icon to open **Navigation**.

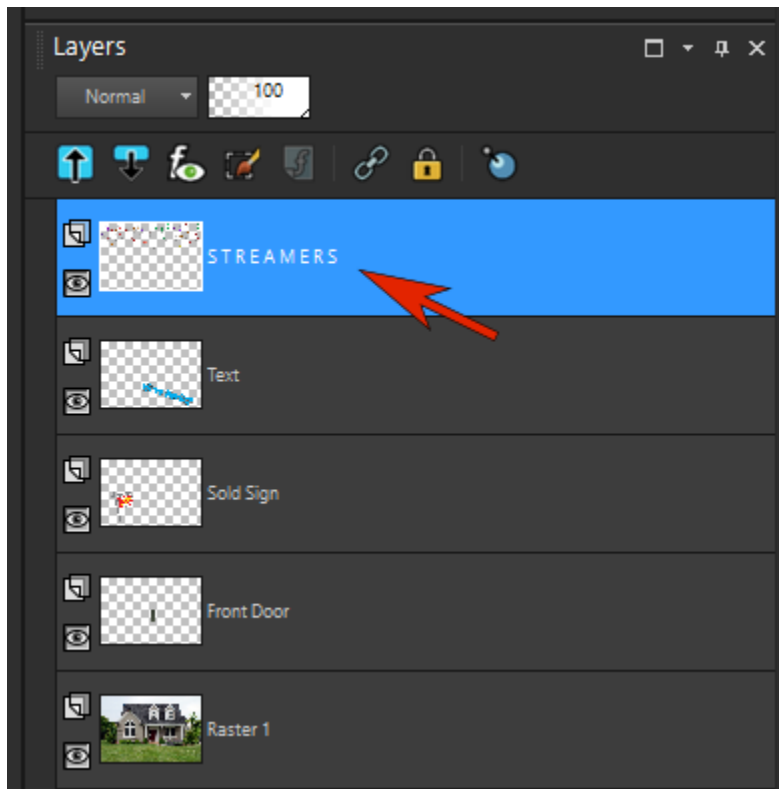


In the **Navigation** area, click on the folder that has your photos and they will be loaded into the **Organizer** palette. From here, you can drag them up into the PaintShop Pro workspace to crop, resize, enhance, or make other edits.



Can I increase the font and/or size for layer names?

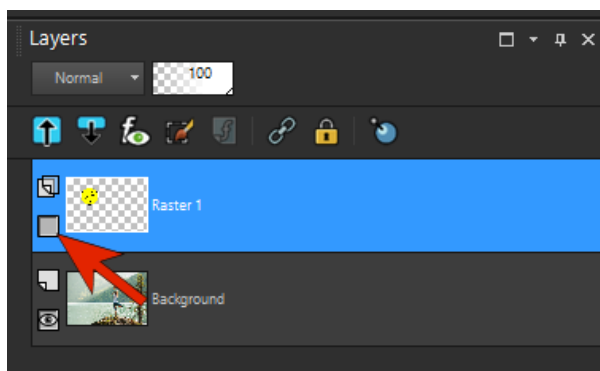
The names of layers in the **Layers** palette are indeed displayed in a rather small font. You can change the name of any layer by clicking on it, and it might help to use capital letters, or even to add spaces between letters.



You can also go to **User Interface > Text Size > Large**. This makes all the text in the interface larger, not just layer names, which isn't a bad option if you're trying to reduce eye strain in general.

Can I remove a sticker or emoji that's blocking part of a photo?

If the sticker or emoji is on its own separate layer, you can simply delete it or turn off the visibility for that layer by clicking the **Visibility** (eye) icon beside the layer in the **Layers** palette.



This is one good reason to keep photos that you're working on in .PSPimage format, so that layers will be maintained. As soon as you save an image as a JPG, PNG, or other raster format, all layers are merged into one.

When an image does have everything on a single layer, the **Magic Fill** tool may be able to help. First, use one of the **Selection** tools to select the sticker/emoji or whatever object you want to remove.



With the **Selection** tool still active, click the **Magic Fill** icon on the **Property Bar**. This will erase whatever is inside the selection area and attempt to replace it with a background that matches the surrounding area.



Learn more in our full tutorial [Removing Unwanted Objects from Photos](#).

In a previous version I had access to Perfectly Clear SE. How can I use this In PaintShop Pro 2020 Ultimate?

PaintShop Pro 2019 included Perfectly Clear 3.5 SE, which doesn't work with PaintShop Pro 2020. But we've replaced Perfectly Clear with the Corel version of GRFX Studio, which can be found in **Effects > Plugins > AutoFX Software**.

If you want to continue working with Perfectly Clear, you can purchase the full version, which contains more features than the version included with PaintShop Pro 2019. To find this version, go to the **Welcome Book**, click **Get More**, filter the list to show **Plugins**, and purchase Perfectly Clear Complete 3.

The screenshot shows the 'Welcome' screen of PaintShop Pro 2020. On the left is a navigation menu with 'Get Started', 'What's New', 'Learn', 'Get More', and 'Ultimate Template Bundle'. The 'Get More' option is selected. The main area displays a list of software offers:

Image	Product Name	Type	Description	Price / Offer
	GRFX Studio Pro - Upgrade	Plugins	Easily create the most challenging photos with a few clicks and hundreds of effects to choose from! Upgrade to add over 500 photo effects!	Save 75% \$399.99 \$99.99
	Perfectly Clear Complete 3	Plugins	Create brilliantly finished photos automatically using time saving technology & editing tools.	Save 20% \$129.00 \$99.99
	ParticleShop	Plugins	Create one-of-a-kind effects with ParticleShop, a powerful brush plugin powered by Painter®. Requires 64-bit Operating System.	\$49.99
	BenVista PhotoZoom Pro 8	Plugins	The world's #1 software solution for enlarging and downsizing digital photos and graphics just got better.	Exclusive offer \$169.00 \$89.00

On the right side, there is a 'Filter by:' dropdown menu with the following options:

- ☐ Special Offers
- ☐ Applications
- ☒ Plugins
- ☐ Scripts
- ☐ Scripts - Photo Effects
- ☐ Scripts - Artistic Effects
- ☐ Scripts - Atmosphere
- ☐ Creative Content
- ☐ My Library