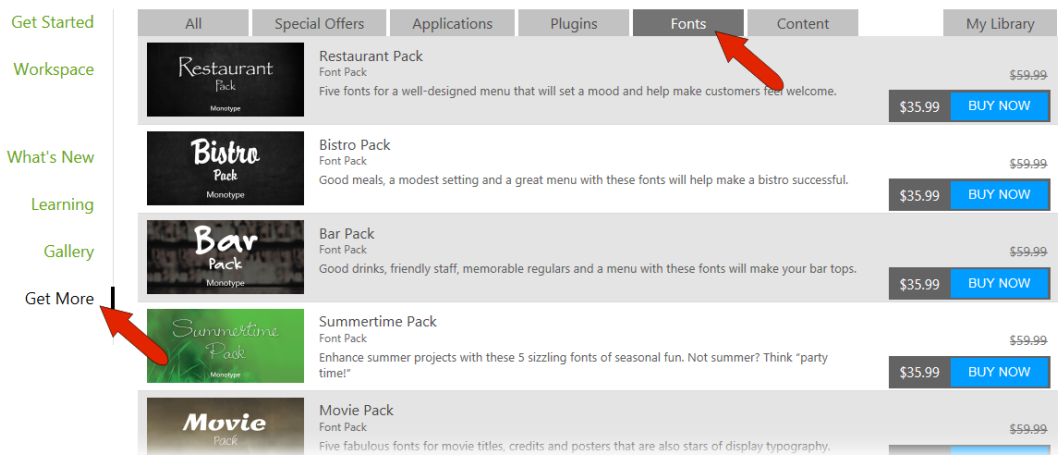


Font Management Tips

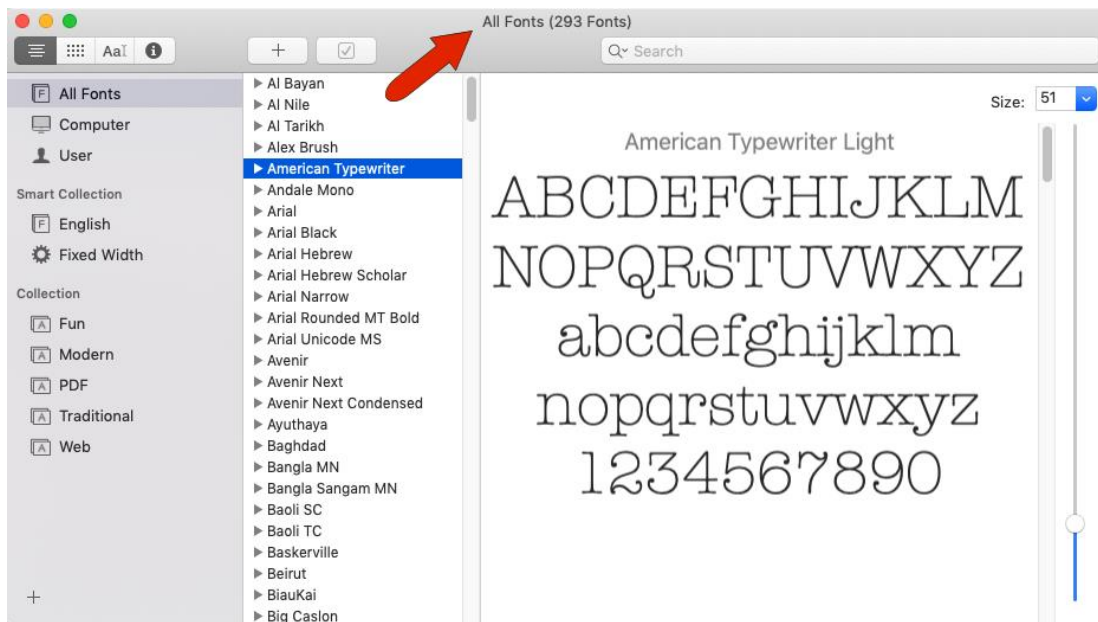
In this tutorial, we'll cover installed vs not-installed fonts, finding and filtering fonts, and font comparison.

Installed Fonts

As discussed in previous tutorials in this series, you probably have hundreds of fonts on your computer. Some were included with iOS, others may have been added when installing other applications, and others may have come from font websites. From within CorelDRAW, the **Get More** link has a Fonts page, from where you can bring in a wealth of additional fonts, some for free and some for purchase.

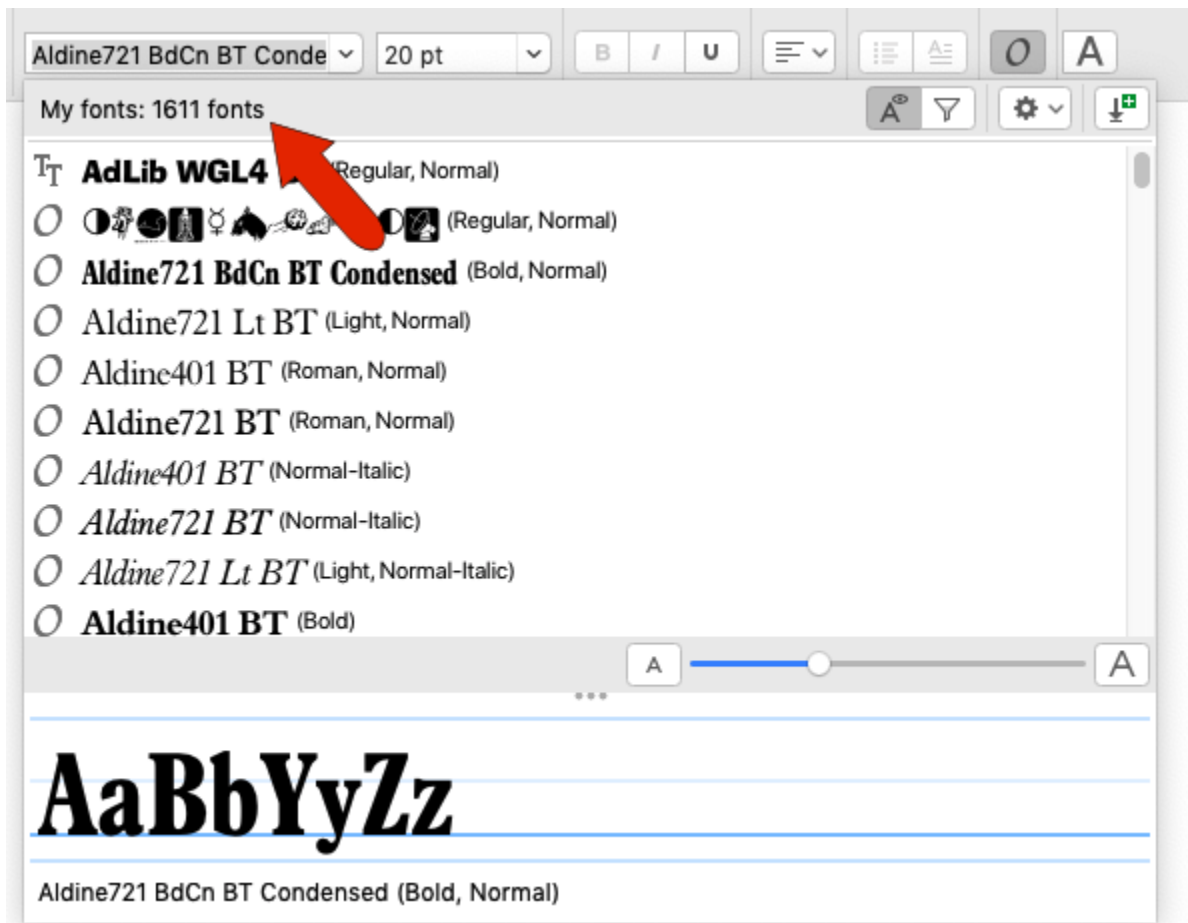


To see what fonts are installed on your Mac, open the **All Fonts** folder. In this example, 293 fonts are installed. All these fonts can be used for any application on this computer. Select a font to preview it.



CorelDRAW-Available Fonts

In contrast, activate the **Text** tool in CorelDRAW and open the fonts list in the **Property Bar**. In this example, there are 1611 available fonts.

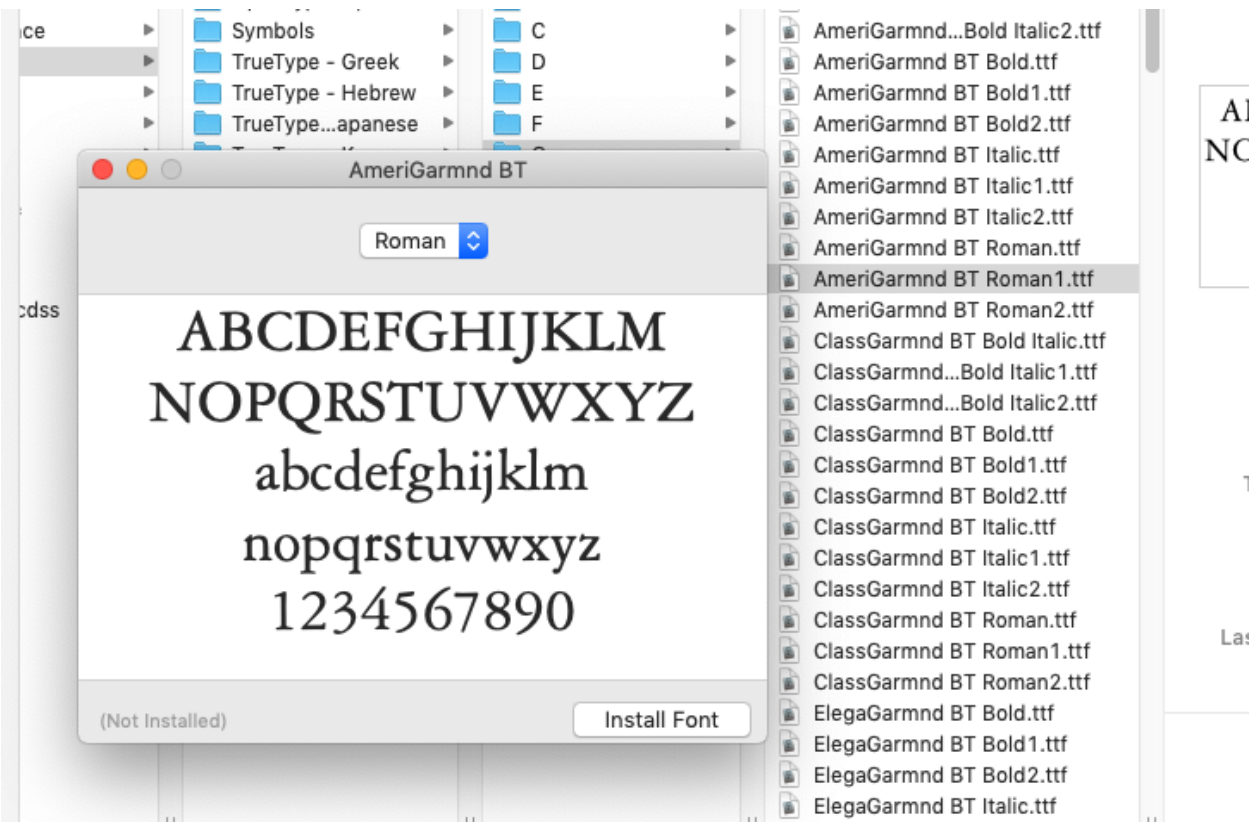


Some of these are the ones installed on this Mac, but the rest are not installed. CorelDRAW can access fonts that aren't installed in iOS, and these non-installed fonts are available only in CorelDRAW, not in any other applications.

As an example, after downloading a set of fonts from Corel Content, these are placed in **Documents / Corel / Corel Content / Fonts**. "Fonts" is one of CorelDRAW's watched folders, so any font here will appear in CorelDRAW's font list. Unless also installed in iOS, fonts here can't be used in other programs. But they can be used in CorelDRAW.

The **Fonts** folder, and all folders inside it, are automatically watched folders in CorelDRAW.

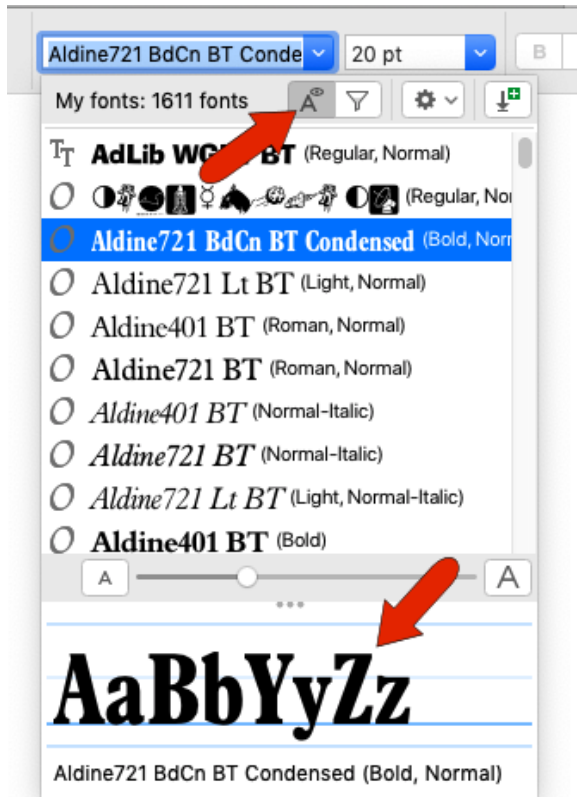
Any CorelDRAW-only font can be installed in iOS. This could be done simply by double-clicking on a font, and in the window that opens, click **Install Font**.



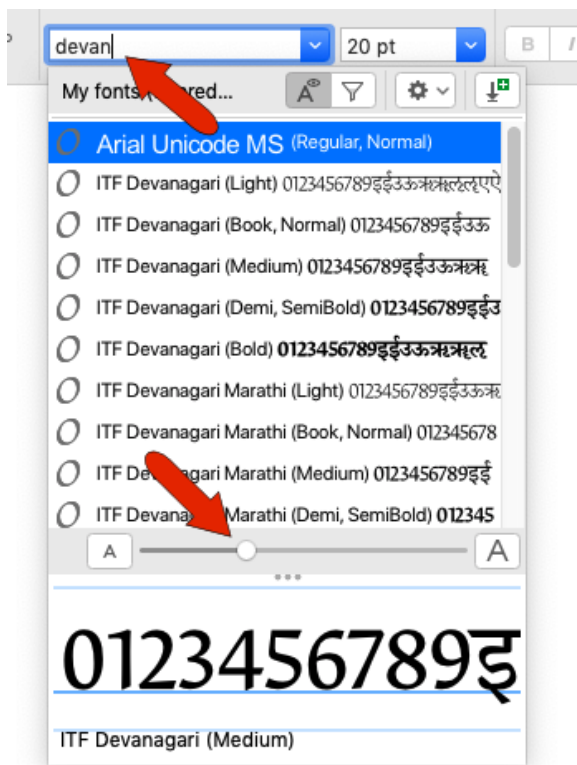
However, keeping a large number of installed fonts can unnecessarily weigh down your system. The most efficient way to store fonts that you'll only be using in CorelDRAW is to keep them in a folder within the **Corel Content / Fonts** file structure.

CorelDRAW's Font List

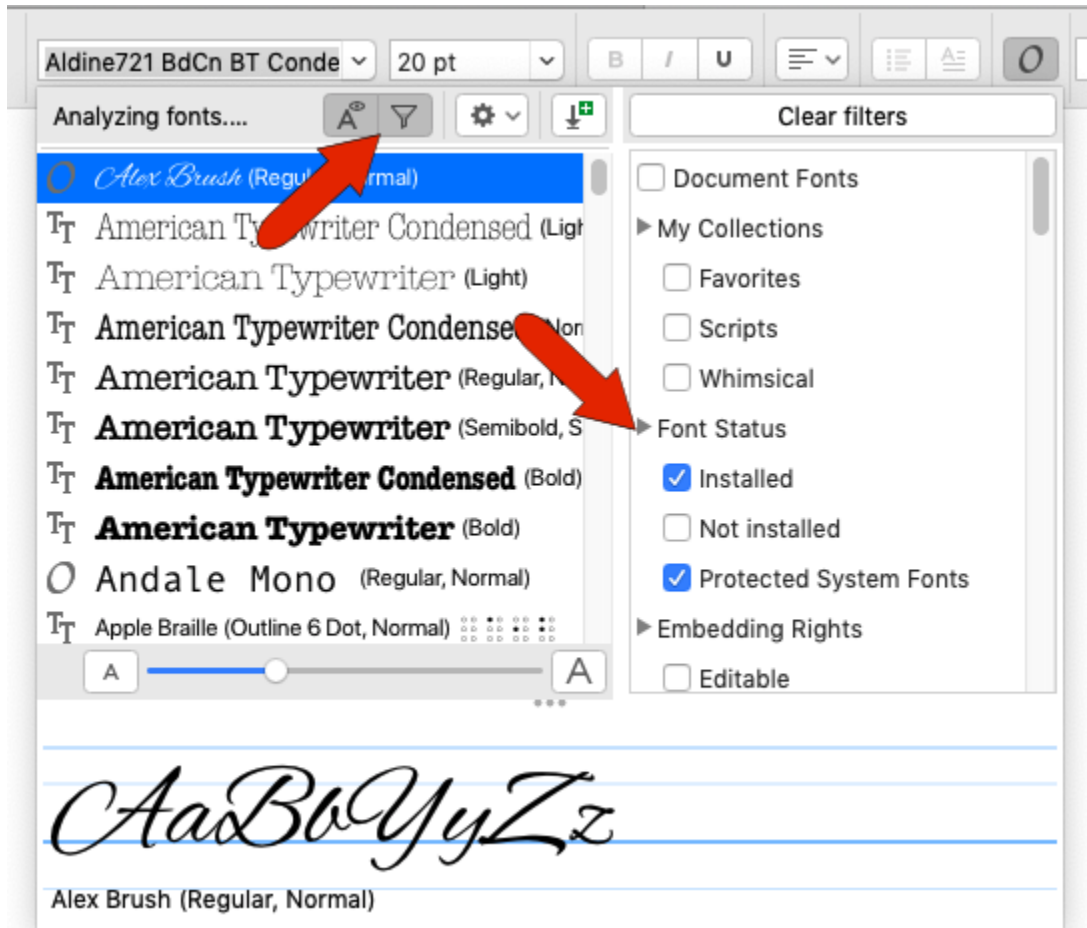
While **Preview** is enabled, you can hover over any font to see how it looks with default characters.



You can increase the size of the font names with the slider, and you can find a specific font by starting to type its name in the font field.



Click **Show Filter List** to narrow the font list according to a variety of criteria. For example, listing only installed or protected system fonts reduces the list to those installed in iOS.

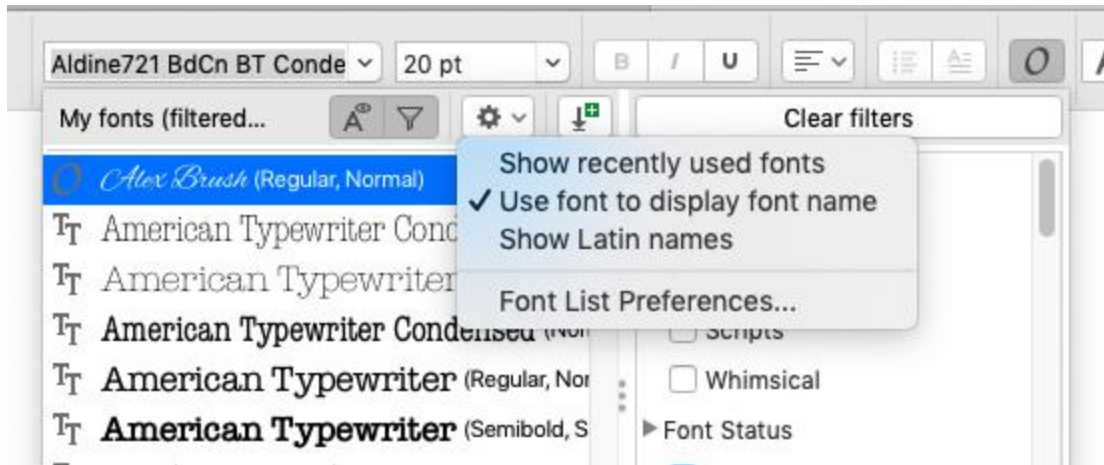


Not Installed displays fonts in CorelDRAW's watched folders.

You can also show only fonts that are editable or installable. Or filter by font technology, weight, width, style, language, etc. Checking **Document Fonts** shows only those fonts currently in use in your document.

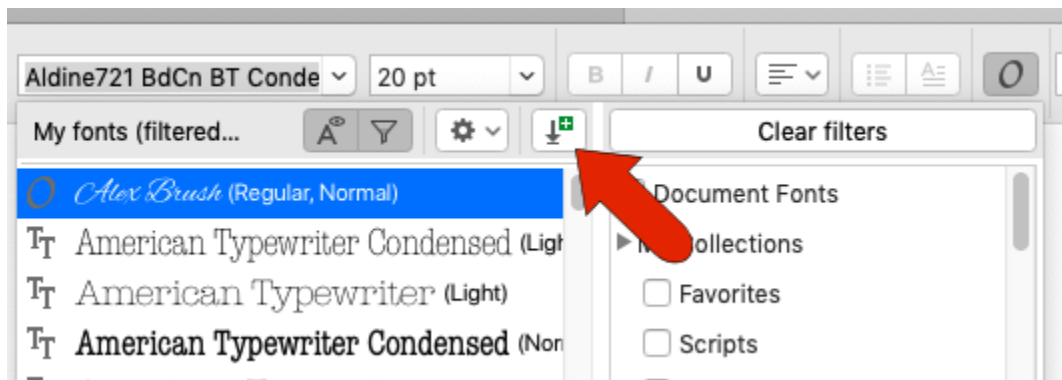
You can bring the entire font list back by clicking **Clear Filters** at the top.

The **Font Options** icon opens a list of options that include displaying recently used fonts at the top of the list and using the font to display the font name. **Show Latin Names** will display non-Latin font names in Latin characters.



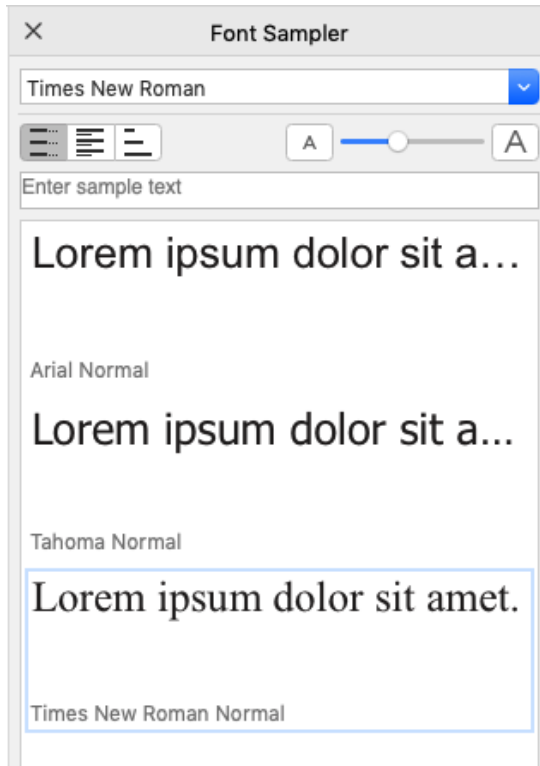
Clicking **Font List Preferences** opens the program preferences to the **Text** page, with the familiar options for display, font matching, and writing tools.

Click **Get More** to open the list of font packs you can purchase or download from Corel.

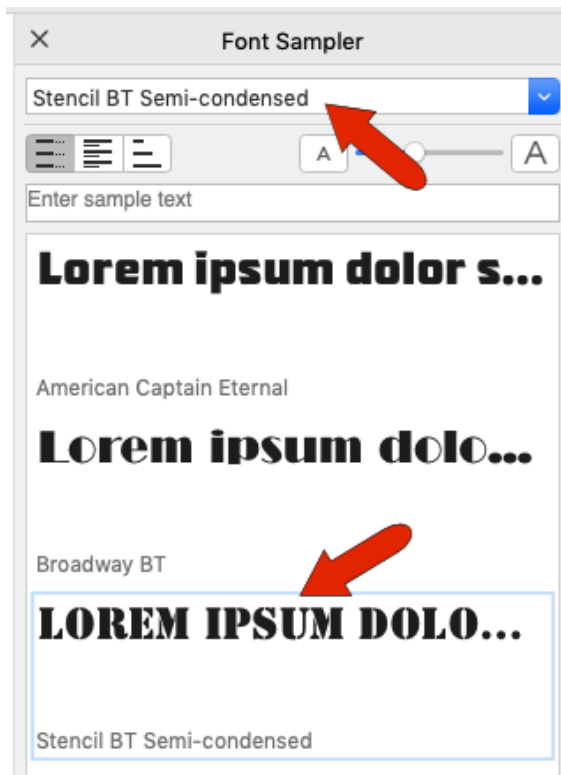


Comparing Fonts

The **Font Sampler** inspector can be used to compare fonts applied to the same text string. Users of previous versions of CorelDRAW will recognize this inspector as the former Font Playground. By default, the inspector opens with three samples in standard fonts, using the default Lorem Ipsum text.



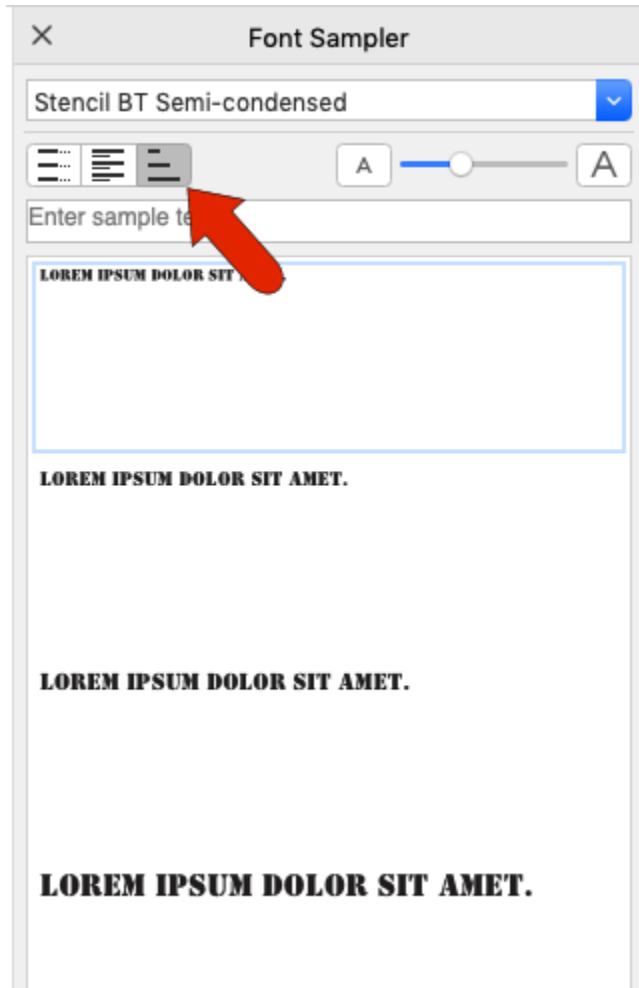
To change the fonts, click each sample and set a different font.



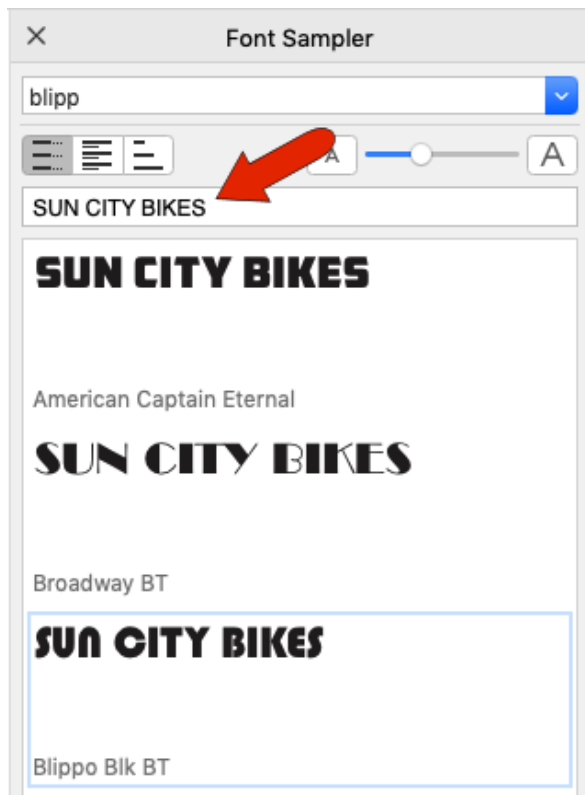
You can add another font by clicking **Add** at the bottom of the inspector.

Drag and drop to rearrange the list, and to remove a sample, select it and click **Remove** at the bottom. You can change the sample text size with the slider.

The default view is **Single Line**, but you can switch to **Multi Line** to see the entire sample text. Or switch to **Waterfall** view to display sample text in the selected font, in different sizes which you can adjust.



To compare fonts using the actual text in your document, simply edit the text, and select and copy it with **Cmd + C**. Then paste it into the sample text bar. You could paste in text copied from another application as well.



When you've chosen the font to use, select it and click the **Copy** button. Then activate **Text** tool and paste in the copied text.



The **Font Sampler** is also handy for comparing fonts in a font family, such as these three samples of the American Typewriter family.

