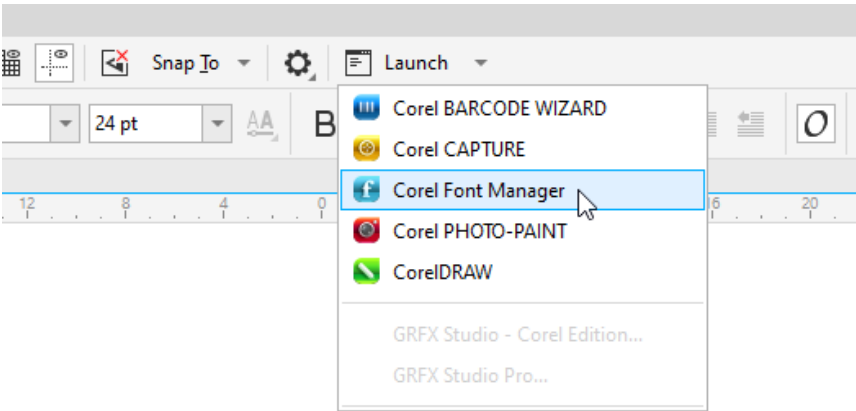


How to Import and Export Font Collections

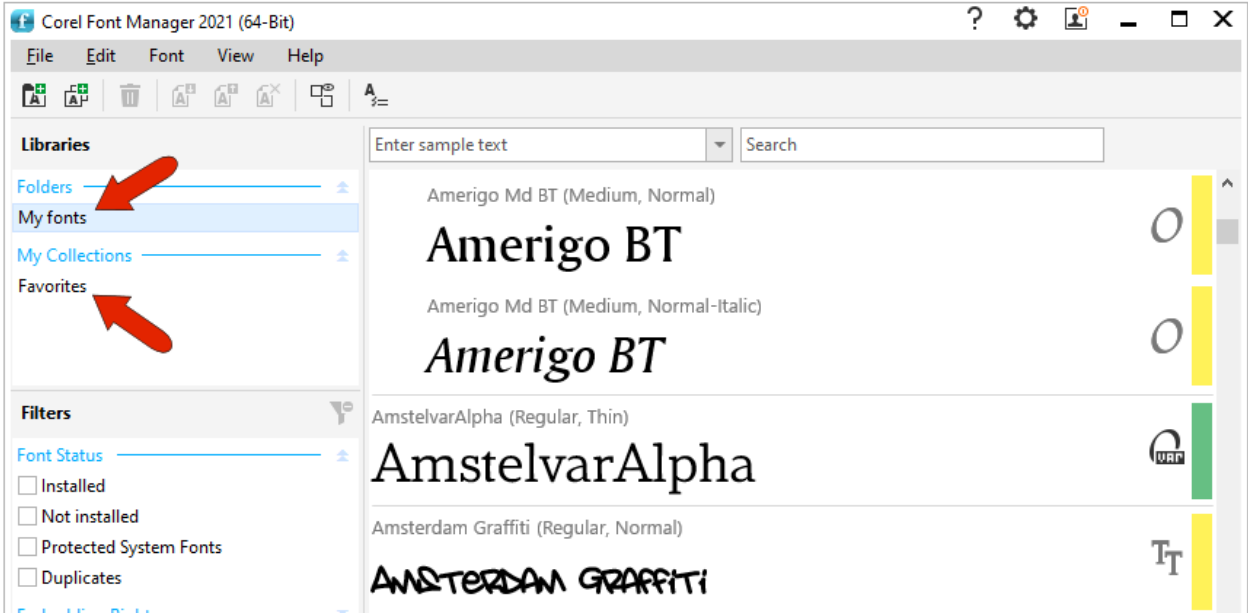
Corel Font Manager is a stand-alone application that enables you to search, filter, and organize your fonts used in CorelDRAW and Corel PHOTO-PAINT. New in Corel Font Manger 2021, you can preserve your font structure by importing and exporting font collections and folders. This means that you can import the database when installing CorelDRAW Graphics Suite on a different system. Or, in the case of an organization, everyone can import the same database so that collections and folders used to organize fonts for specific projects or clients are consistent throughout the office.

Overview of Corel Font Manager

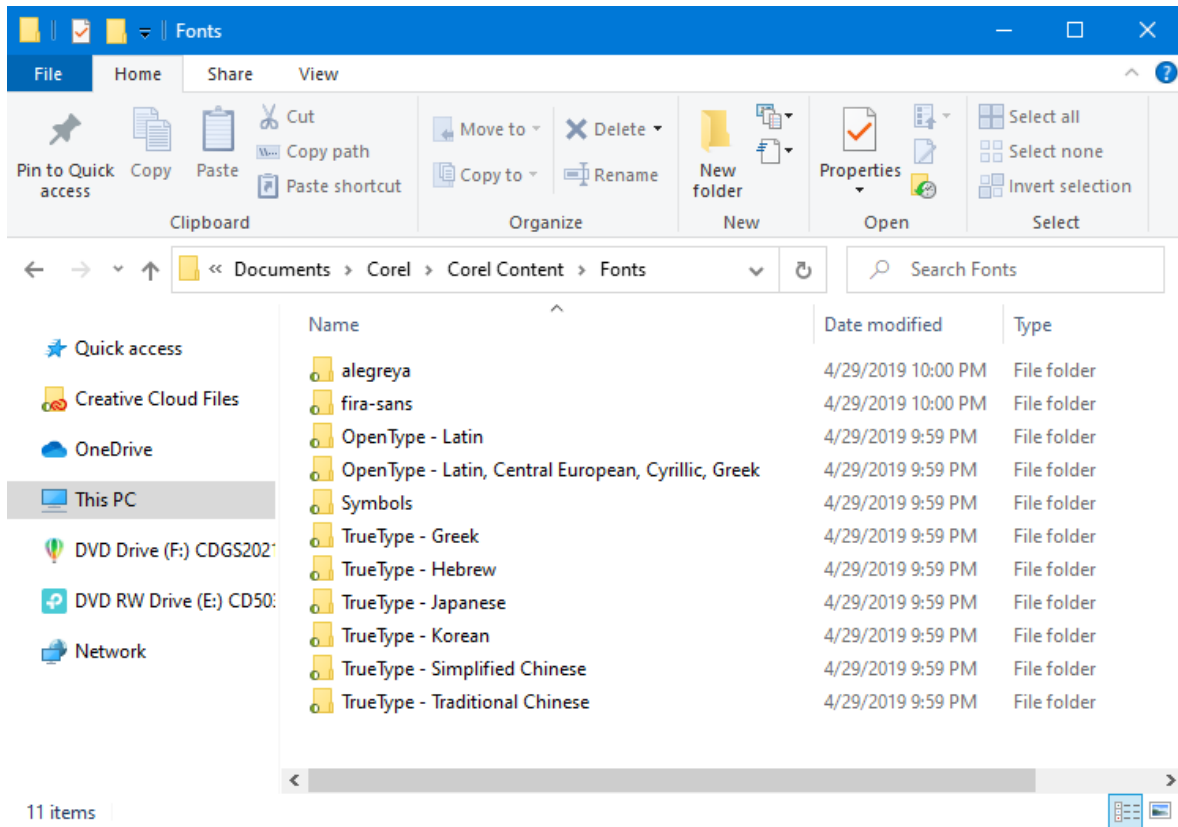
Corel Font Manager can be accessed by its own icon from the **Start** menu, or from the launch menu in CorelDRAW or PHOTO-PAINT.



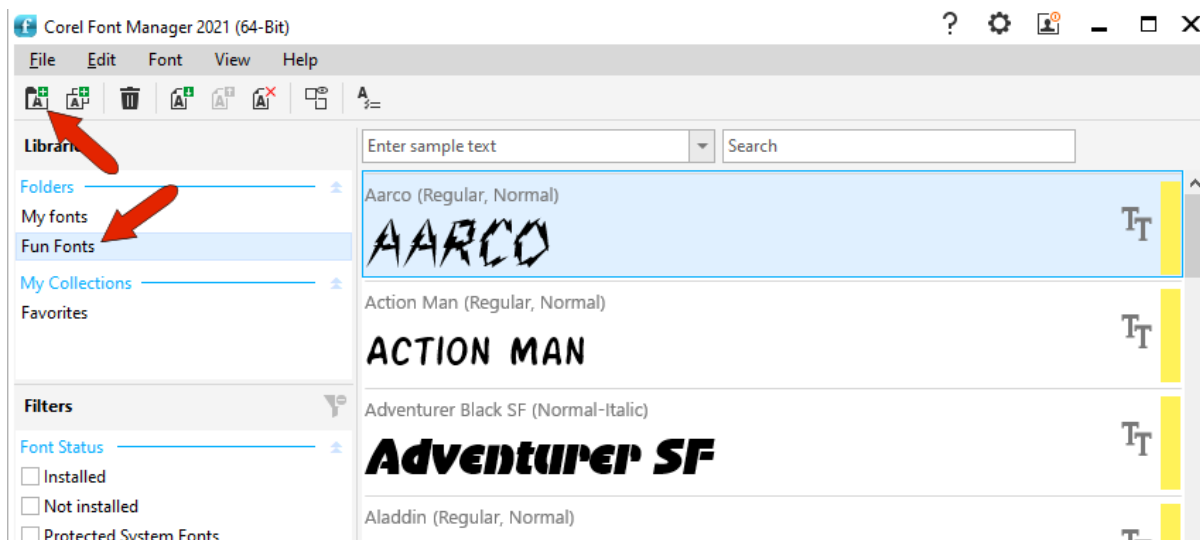
By default, the **My Fonts** folder and **Favorites** collection are included.



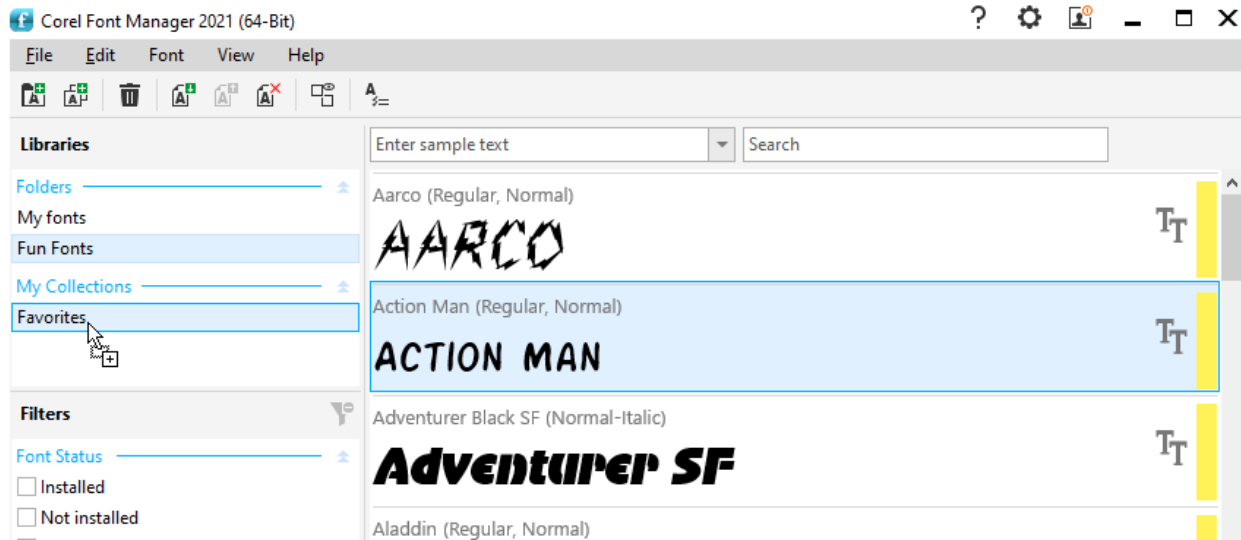
The **My Fonts** folder includes all system-installed fonts, and any fonts in added folders that are watched by Corel. By default, Corel watches **Documents > Corel > Corel Content > Fonts**, and any subfolders within.



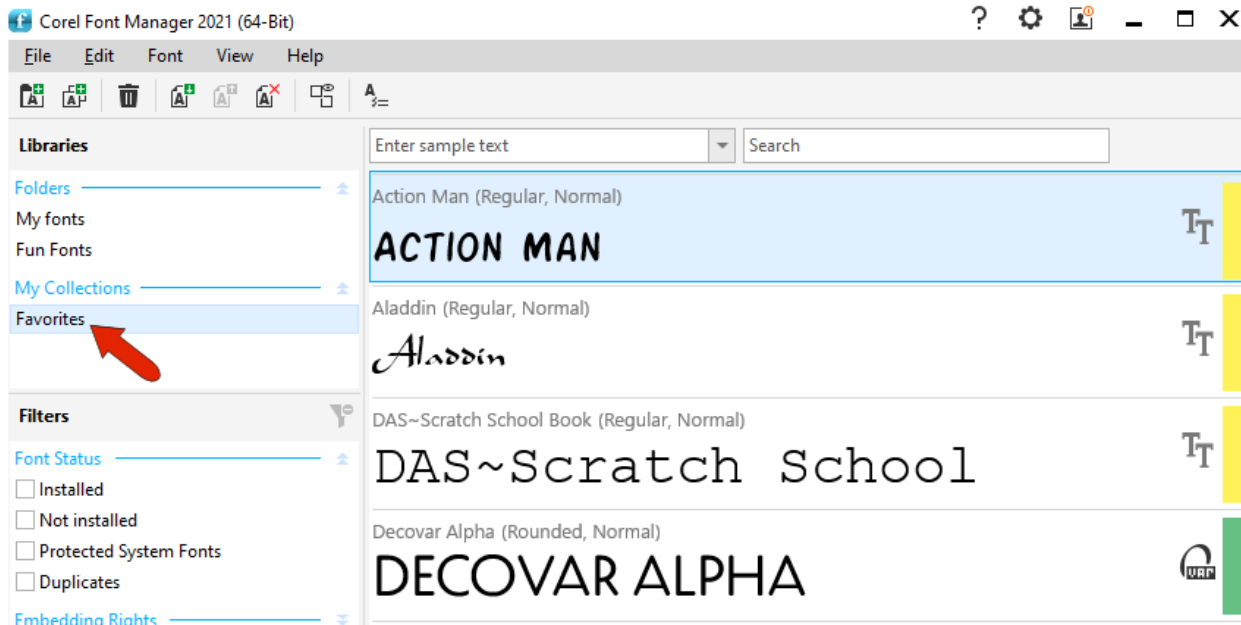
If you want Corel to also watch fonts in another folder, click the **Add Folder** icon, and browse to and add that folder.



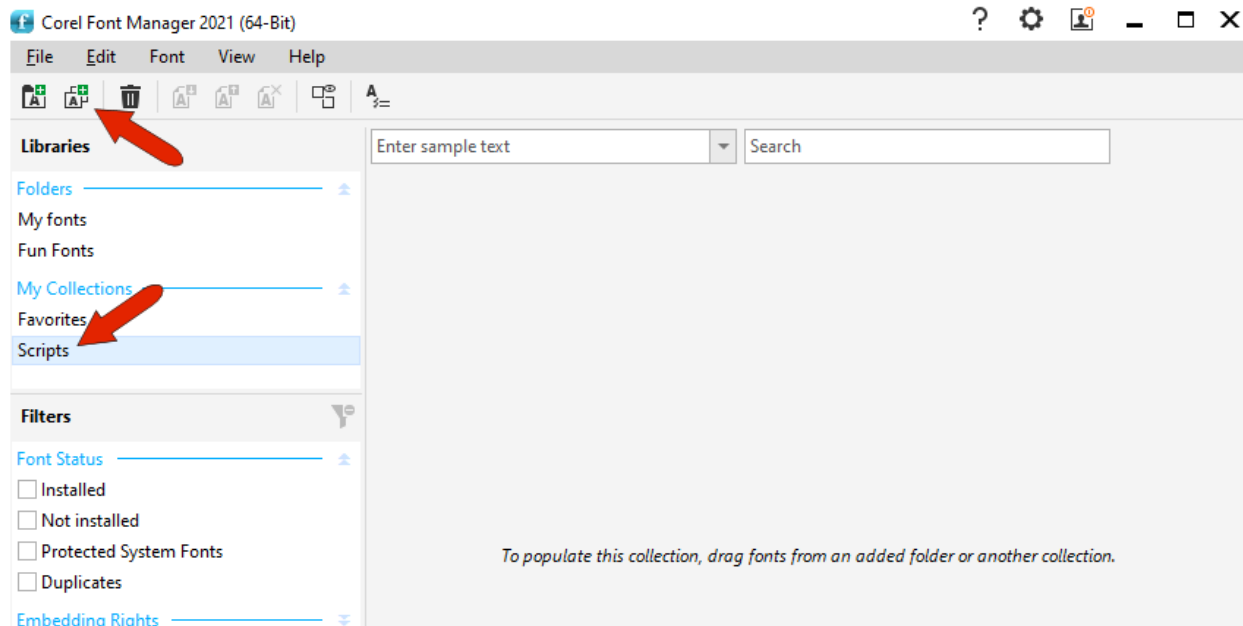
Collections are groups of fonts you access often. To populate the **Favorites** collection, open the folder that contains the fonts and drag them into **Favorites**.



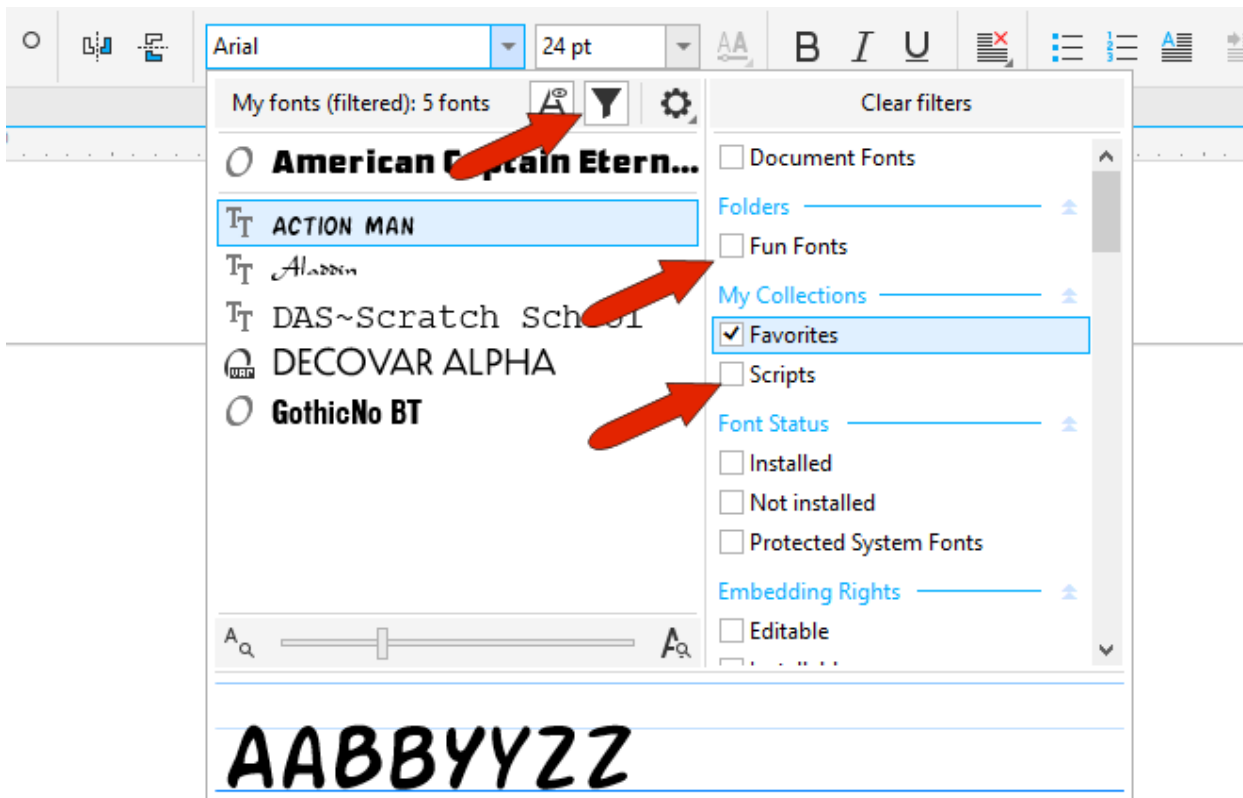
Clicking **Favorites** shows what's inside.



To add a new collection, click **Add Collection** and assign a name. You can then populate this and any other collection you add.



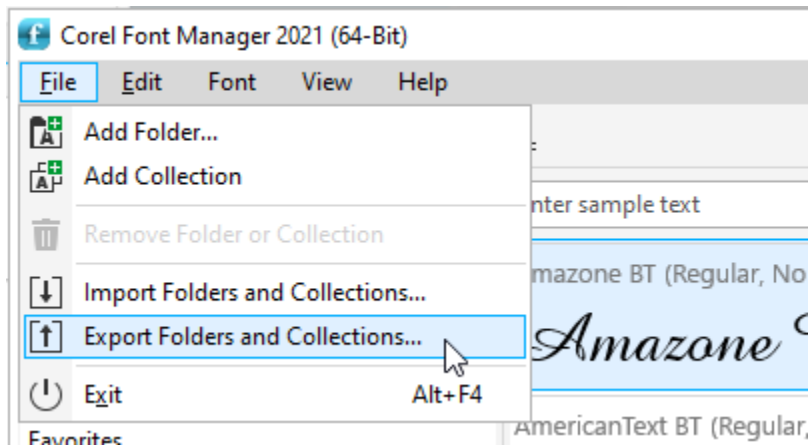
The font folders and collections that you create in the Font Manager are used to organize your fonts in CorelDRAW and PHOTO-PAINT. In CorelDRAW, activate the **Text** tool, open the font dropdown list, and click the **Filter** icon. In the filter list, you can select which folders or collections to display in the font list.



To learn more about managing your fonts, watch our full tutorials on [Using the Font Manager](#) and [Font Management Tips](#).

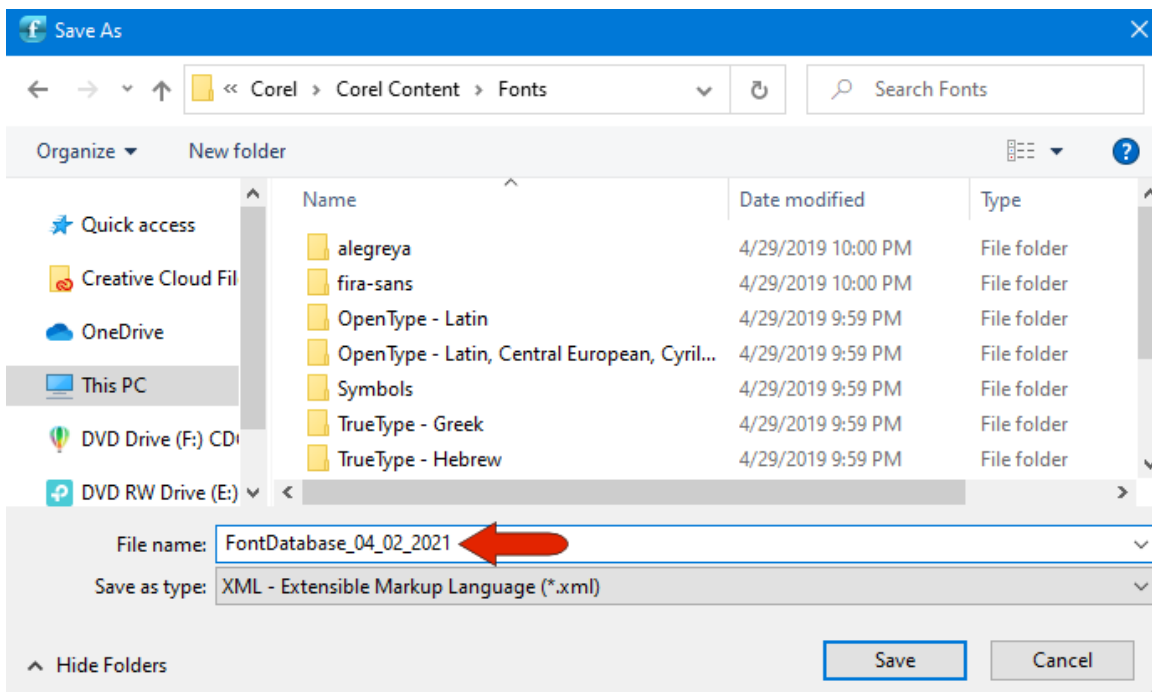
Importing and Exporting Font Folders and Collections

In Font Manager, go to **File > Export Folders and Collections**.

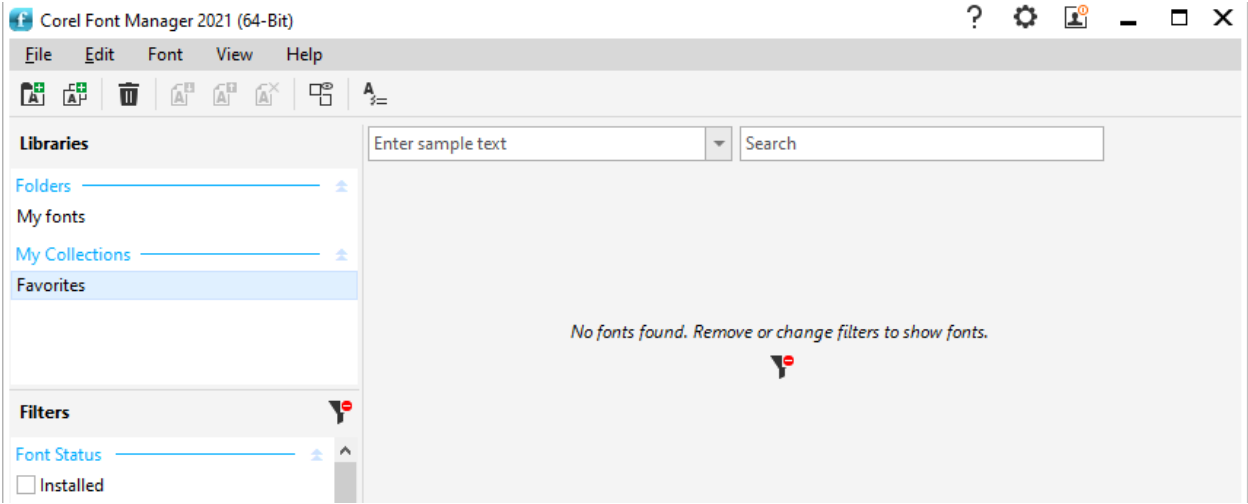


You can choose to save the exported XML database file anywhere, such as your **Documents > Corel > Corel Content > Fonts** folder.

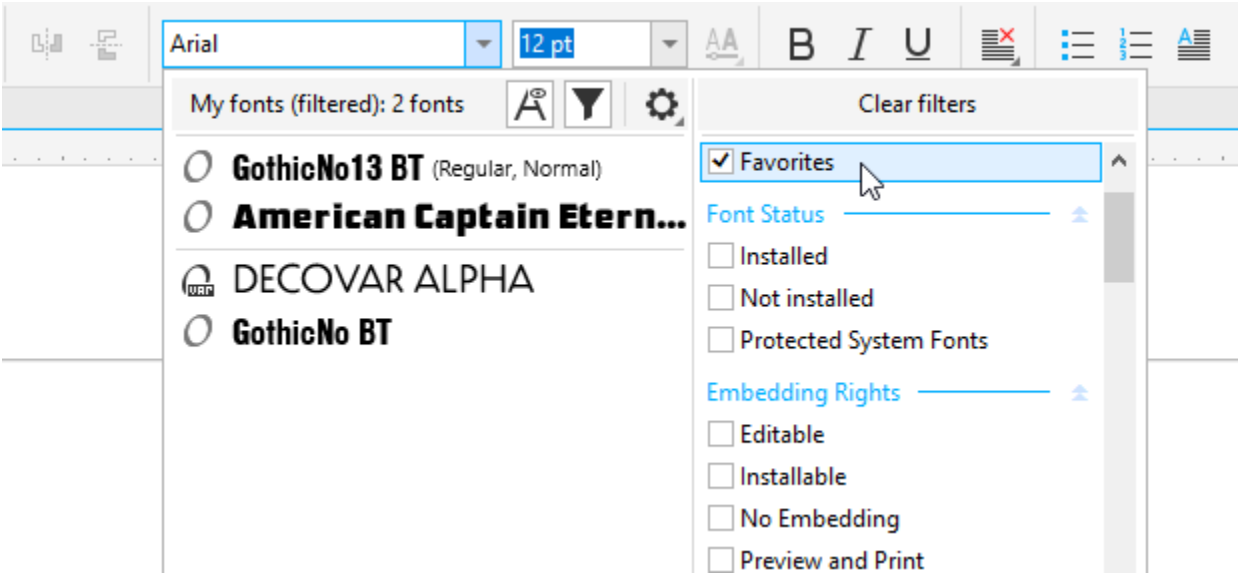
***TIP:** It's good practice to include the date in the file name, in case you export different databases at different times.*



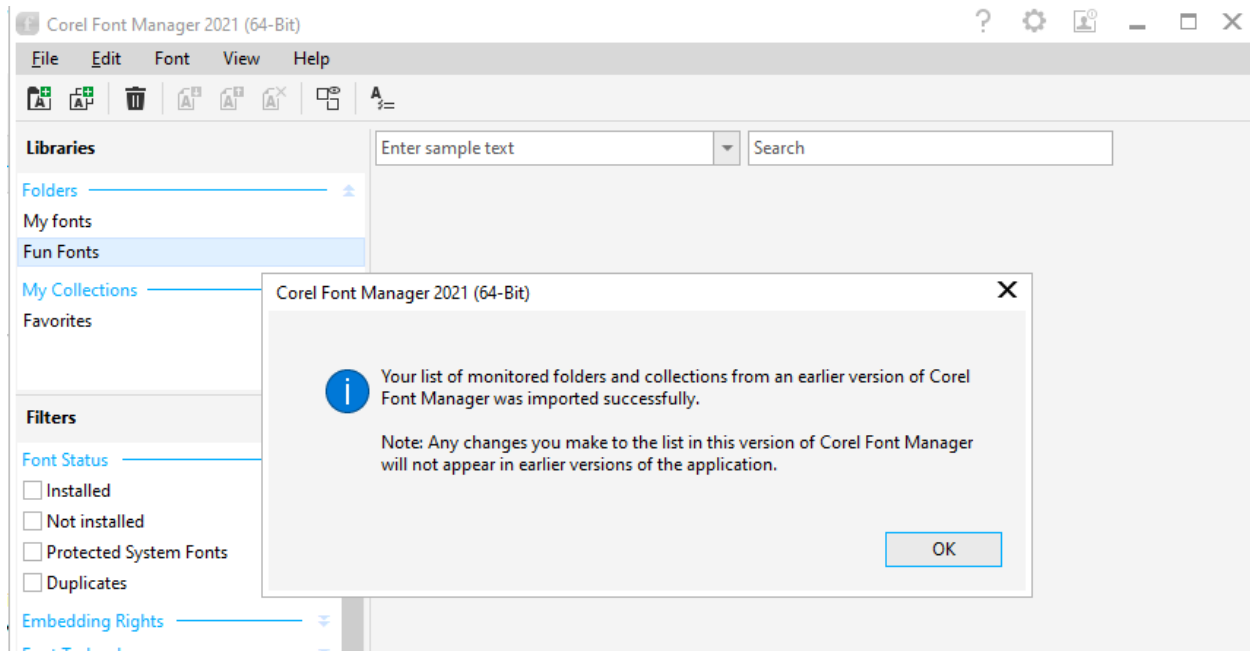
Now let's say you've installed CorelDRAW Graphics Suite on a different system. When you launch the Font Manager, it will only have the default **My Fonts** folder, and the default **Favorites** collection, both of which contain no fonts yet.



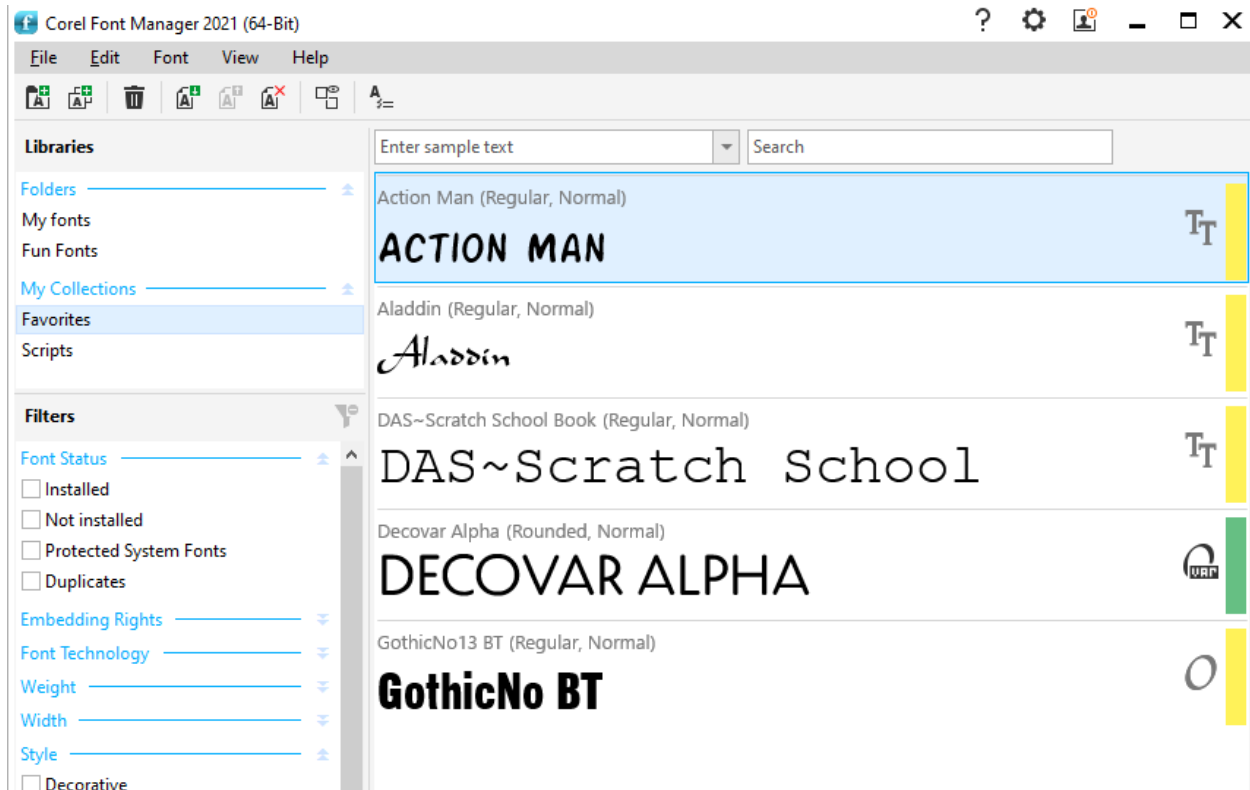
If you open CorelDRAW or PHOTO-PAINT, you'll see the same thing: empty **Favorites** and no extra folders or collections.



To bring in your exported font folders and collections on this new system, open Font Manager and go to **File > Import Folders and Collections**. Browse to the location where you saved the XML file, select it and click **Open**. The update message will let you know that changes in Font Manager will not affect earlier versions of the application.



Now you will see your added folders and collections.



After Font Manager is updated, you'll see the same update message in CorelDRAW and PHOTO-PAINT. And the imported folders and collections will appear in both applications.

NOTE: Keep in mind that the imported XML database file is a structure file that points to specific fonts, but it doesn't include the fonts themselves. The fonts themselves would have to be present on whatever system a database is imported into. If fonts cannot be found, you'll be prompted with a dialog outlining what's missing, so that you can take the appropriate steps to fix the problem.

If you upgrade CorelDRAW Graphics Suite on the same system after version 2021, the database will be preserved automatically, and you won't need to import a saved database.