

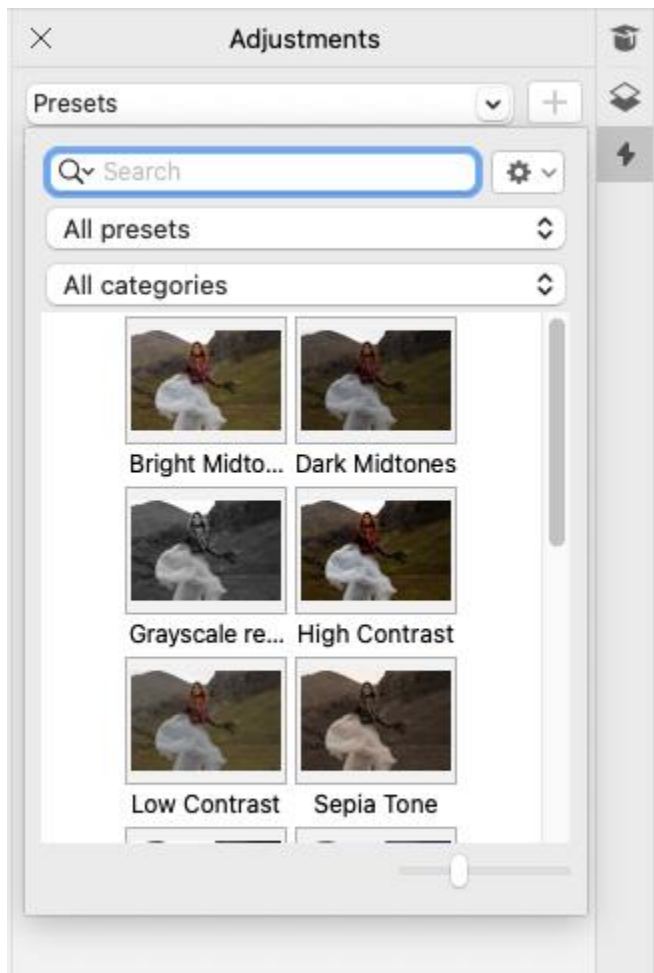
What's New in CorelDRAW Graphics Suite March 2022 Subscriber Update

Designed with your productivity in mind, CorelDRAW Graphics Suite is trusted by millions of graphics pros and design teams around the globe for endless creativity with no time wasted. This tutorial will highlight some of the new features and enhancements, in the March 2022 subscriber-exclusive update.

Faster Photo Editing

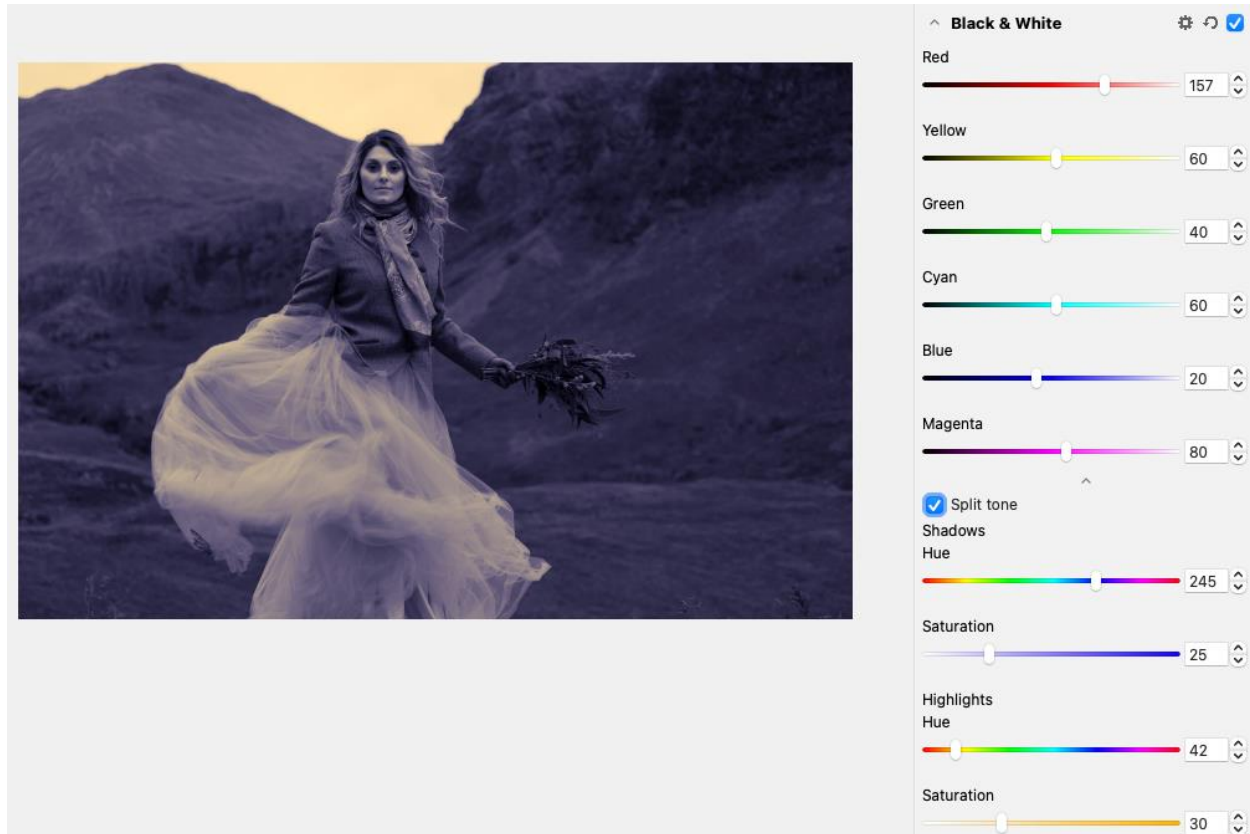
Get incredibly creative with new, non-destructive stackable adjustment presets and a totally transformed **Adjustments** inspector that's up to 10 times faster than before. Enjoy a number of user-inspired enhancements to frequently used photo editing features, and an updated **Adjust** menu with new tools, shortcuts, and commands.

Corel PHOTO-PAINT now has a set of curated presets to get you started.

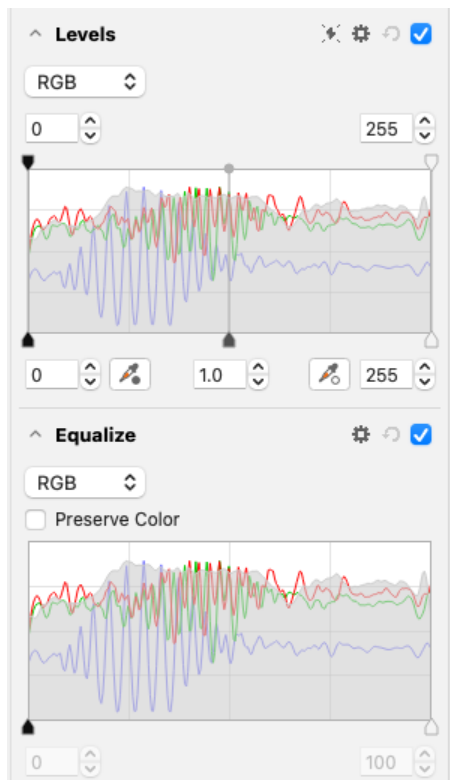


All adjustments are non-destructive and can be used in combination, and the same adjustment effects are available in CorelDRAW as well.

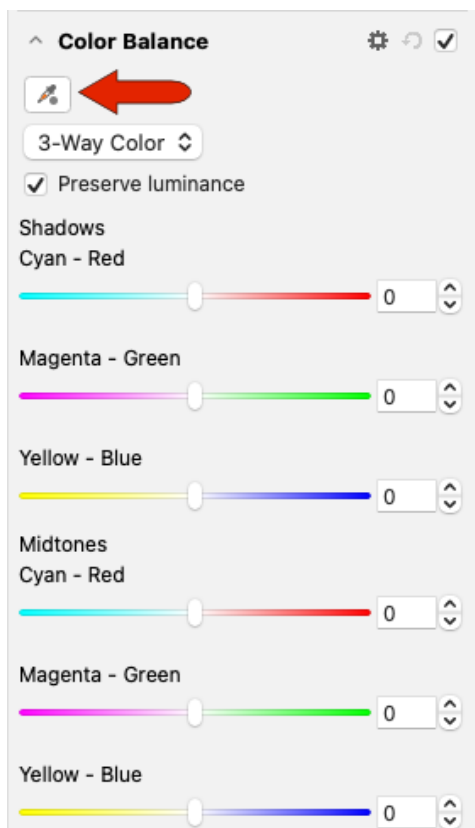
As an example of one new filter, **Black & White** gives you flexibility when converting a color image to grayscale, enabling you to isolate shadows and highlights, and separately adjust hue and saturation of each characteristic.



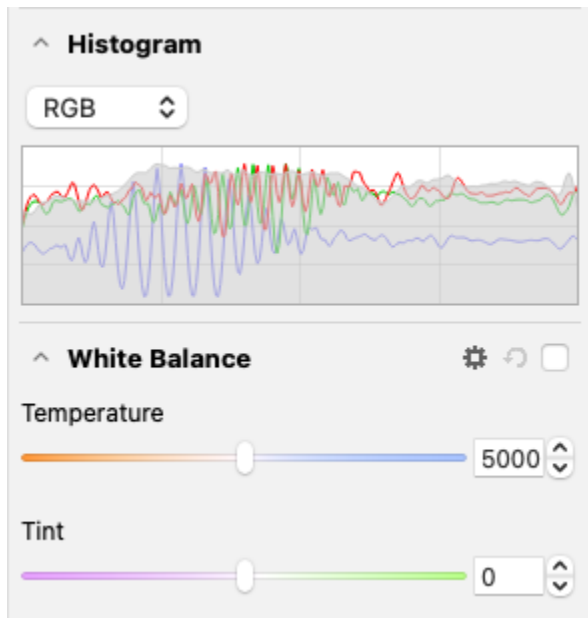
There are also updated controls for **Equalize** and **Sample & Target** filters, and a new **Levels** filter that makes it easier to adjust image contrast.



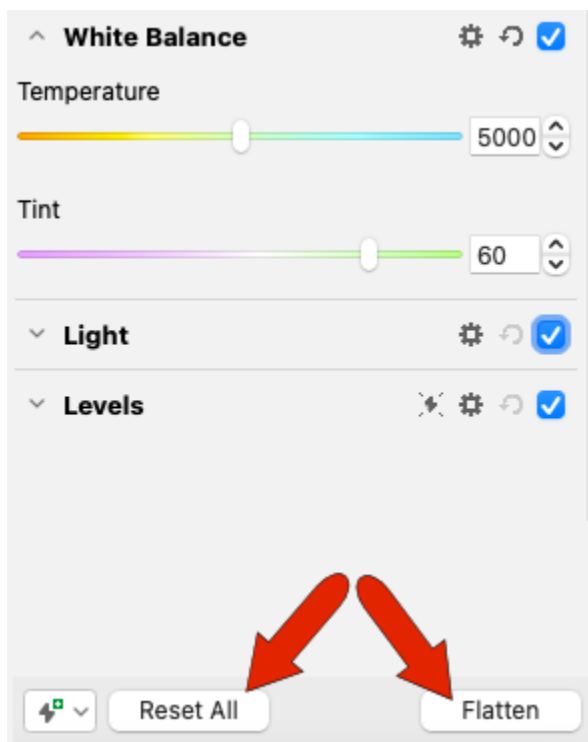
With the **Color Balance** filter, a new color sampling tool enables you to set a neutral gray with a single click.



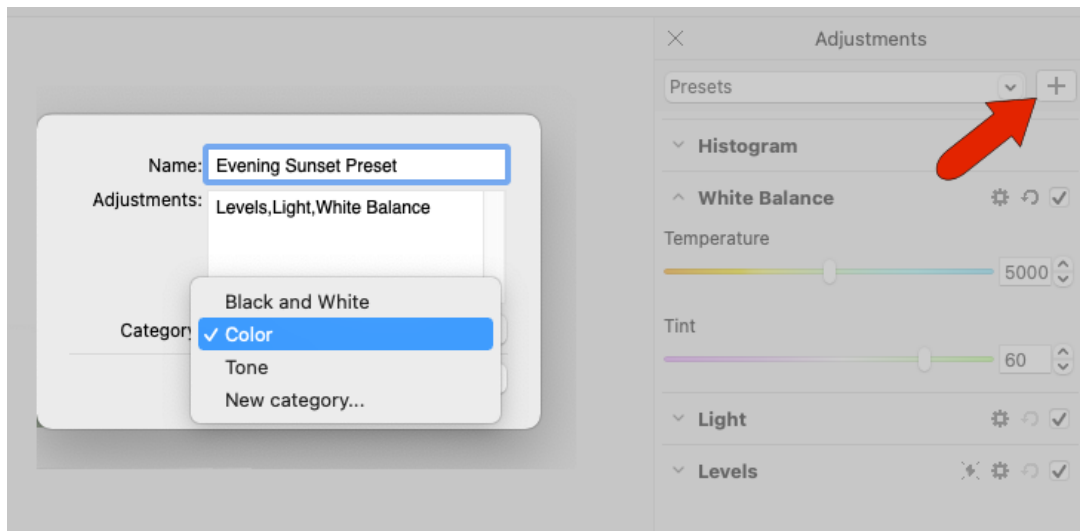
The **Histogram** interfaces have also been enhanced, and to give you a better visual representation as you make adjustments, we've added color to the sliders in several filters.



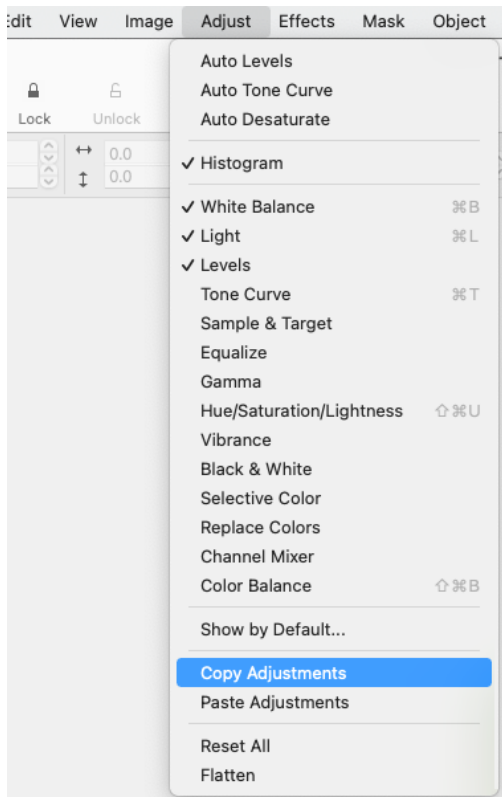
After applying adjustments, you can reset your photo back to default settings, or you can flatten the adjustments to incorporate them permanently into the image.



When you achieve a favorite image-editing result, you can save the filter settings as a preset, and add your preset to an existing category or create your own categories. All PHOTO-PAINT presets can be used in CorelDRAW as well.



The restructured **Adjust** menu also reflects these updates, with new tools, shortcuts, and commands. The **Copy** and **Paste** commands on this menu enable you to quickly apply a set of adjustments from one image to another.

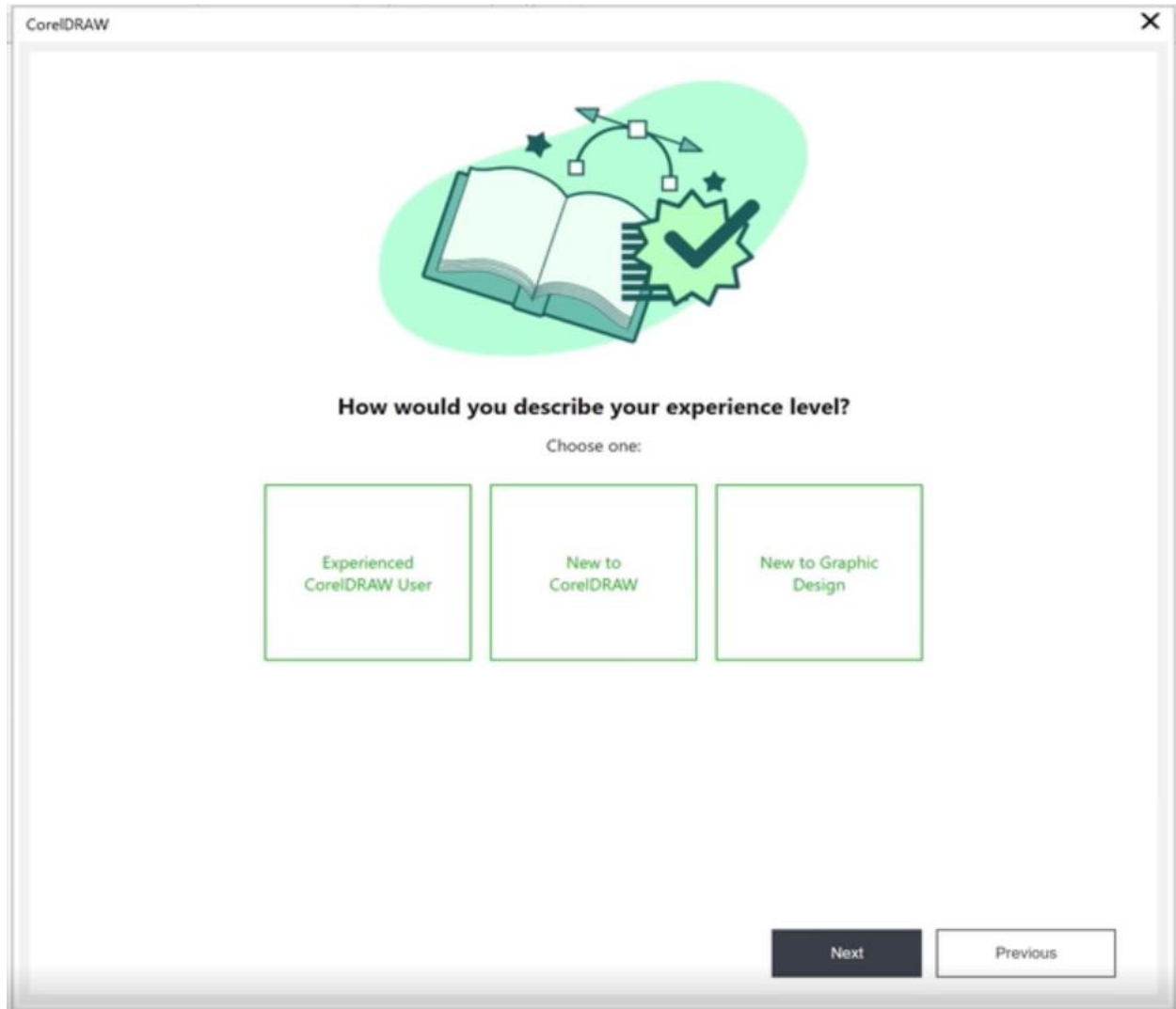


To learn more, watch our full tutorial [How to Use the Adjustments Docker](#).

Optimized Learning Experience


Find personalized learning content in the new **Learn** inspector and search online content as you create from the **Explore** tab. Thanks to optimizations that put tailored training at your fingertips, you'll be successful sooner without having to leave CorelDRAW to brush up on tools and techniques.

When first opening the new version of CorelDRAW or PHOTO-PAINT, you'll be presented with the optional **Personalization** window, in which you can tell us about yourself. First you choose your experience level.

The image shows a screenshot of the CorelDRAW Personalization window. At the top, the title bar says "CorelDRAW" with a close button (X) on the right. Below the title bar is a large illustration of an open book with a green checkmark and a pencil, surrounded by a green glow and several small stars. Below the illustration, the text "How would you describe your experience level?" is displayed. Underneath this text is the prompt "Choose one:". There are three rectangular buttons with green borders and green text: "Experienced CorelDRAW User", "New to CorelDRAW", and "New to Graphic Design". At the bottom right of the window, there are two buttons: "Next" (dark blue with white text) and "Previous" (white with grey text).

Then you choose the types of projects you work on.

CorelDRAW



What projects do you work on most often?

Choose as many as apply:

Advertisements	Art and Illustration	Branding	Printing and Production	
Fashion and Textiles	Infographics	Multipage Layout	Packaging	Social Media
Signage	Technical Drawings	Typography	Web	

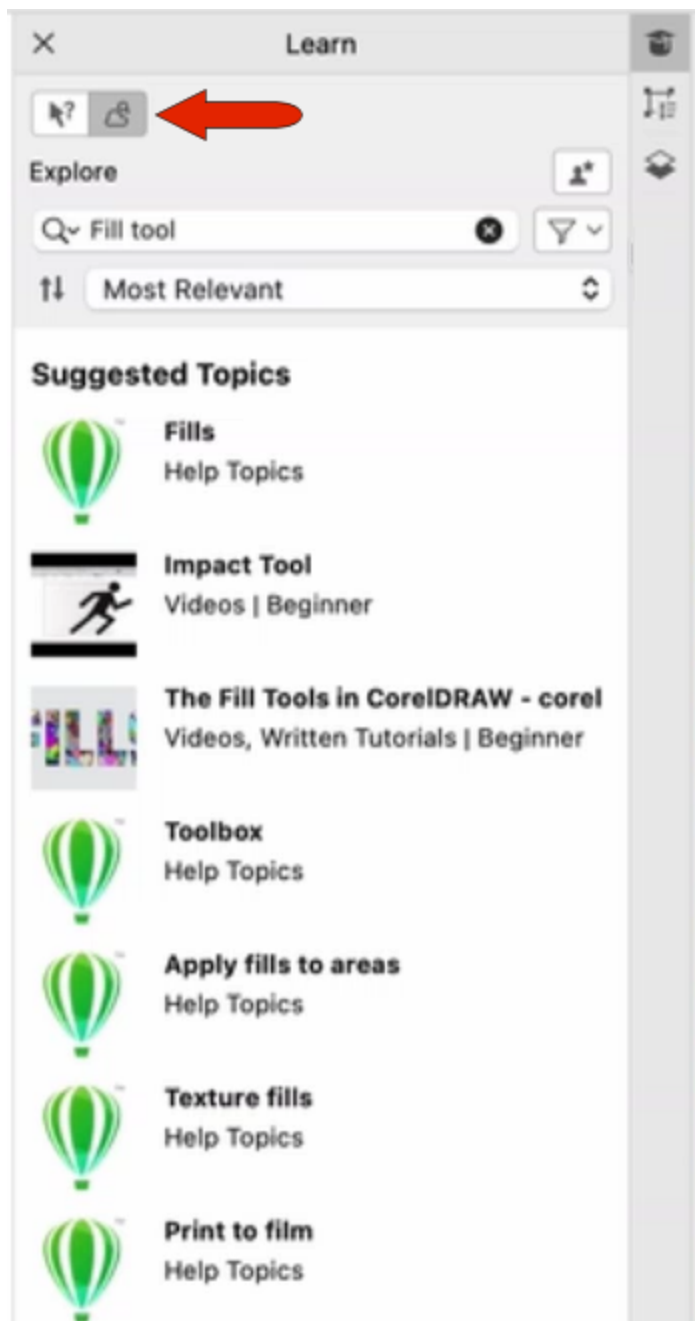
Next Previous

We'll use your profile to curate learning content just for you, which you can see when you launch the **Learn** inspector. You can edit your profile at any time.

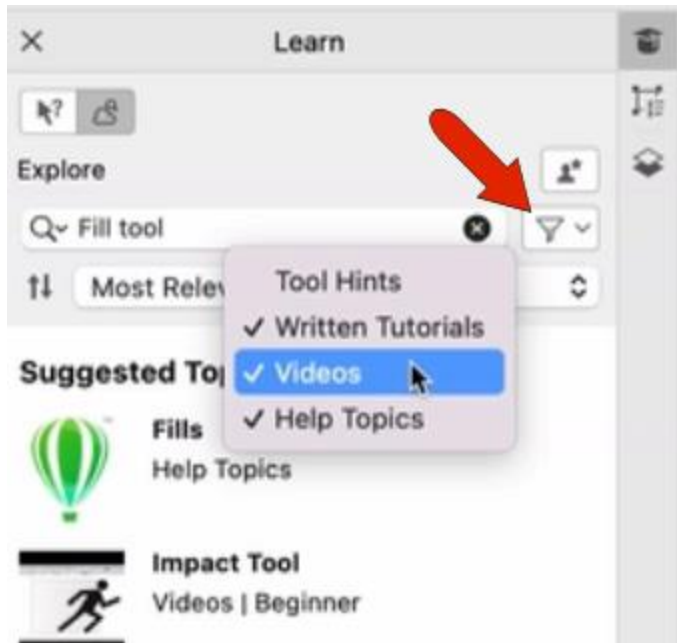
This new inspector replaces the previous **Hints** inspector, which still exists as a tab, and provides learning content on the currently active tool.

Your personalized content can be found in the **Recommended for You** section.

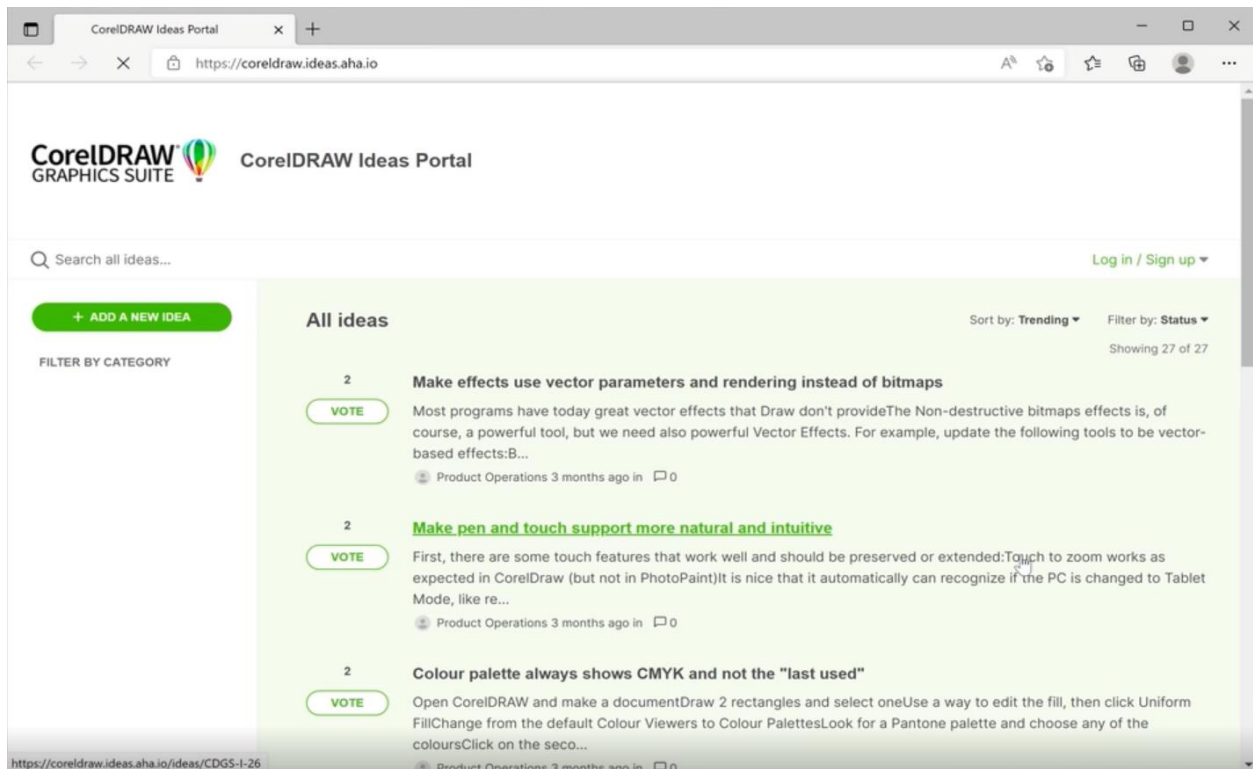
The inspector also has an **Explore** tab, where you can search for specific learning content from our extensive online library, right from the inspector. At the top you can find tool-specific information, and below that are suggested pieces of content for you, based on your profile. This content can include Help topics, video and written tutorials, and hint videos.



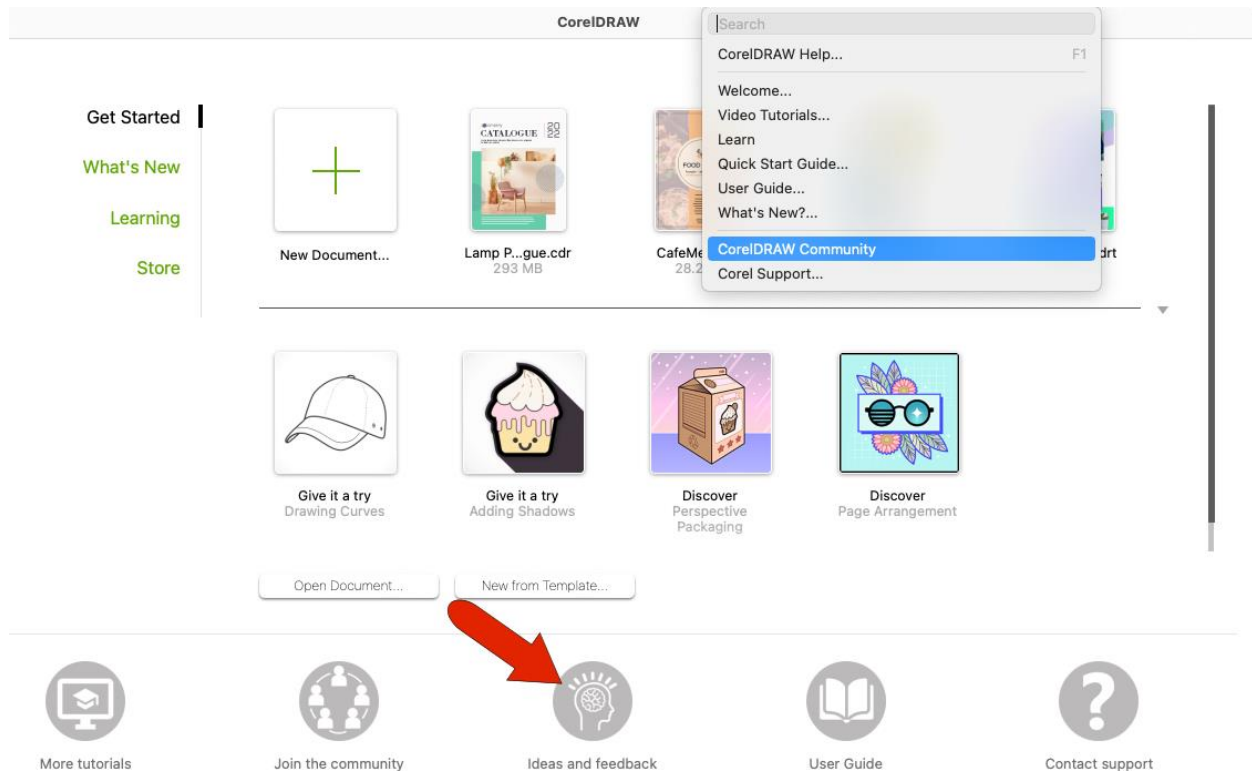
You can also filter the type of content you want to see.



The **Learn** inspector also gives you access to the new **Ideas Portal**, where you can help contribute to CorelDRAW Graphics Suite's design and development. You can submit your own ideas and suggestions, and vote on ideas and suggestions made by others.



The **Ideas Portal** can also be accessed from the Welcome Screen, and from the CorelDRAW Community site.

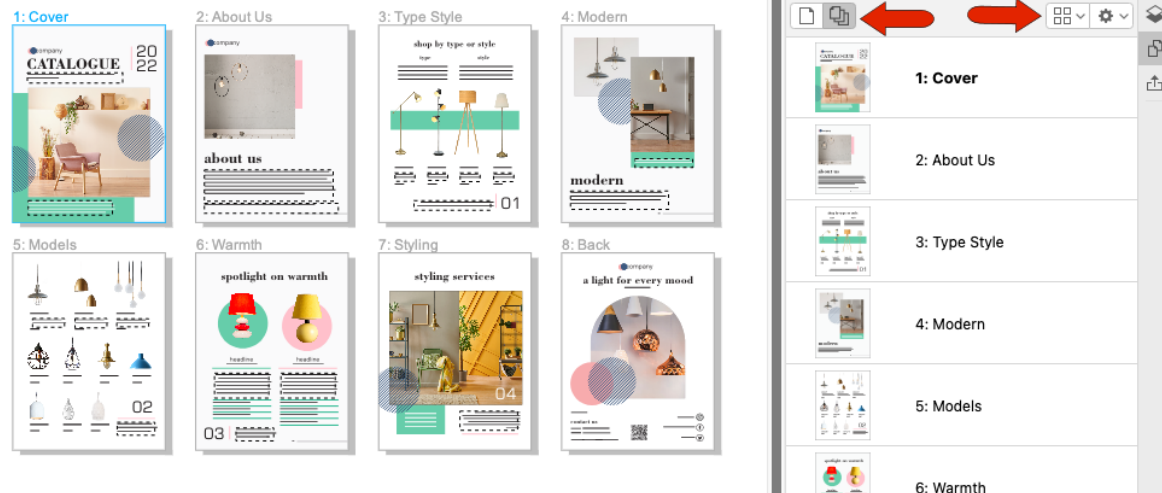


Customer-Inspired Features

Enjoy many enriched features based on direct suggestions from our loyal users—from timesaving Multipage view and Pages improvements to valuable image editing and export enhancements.

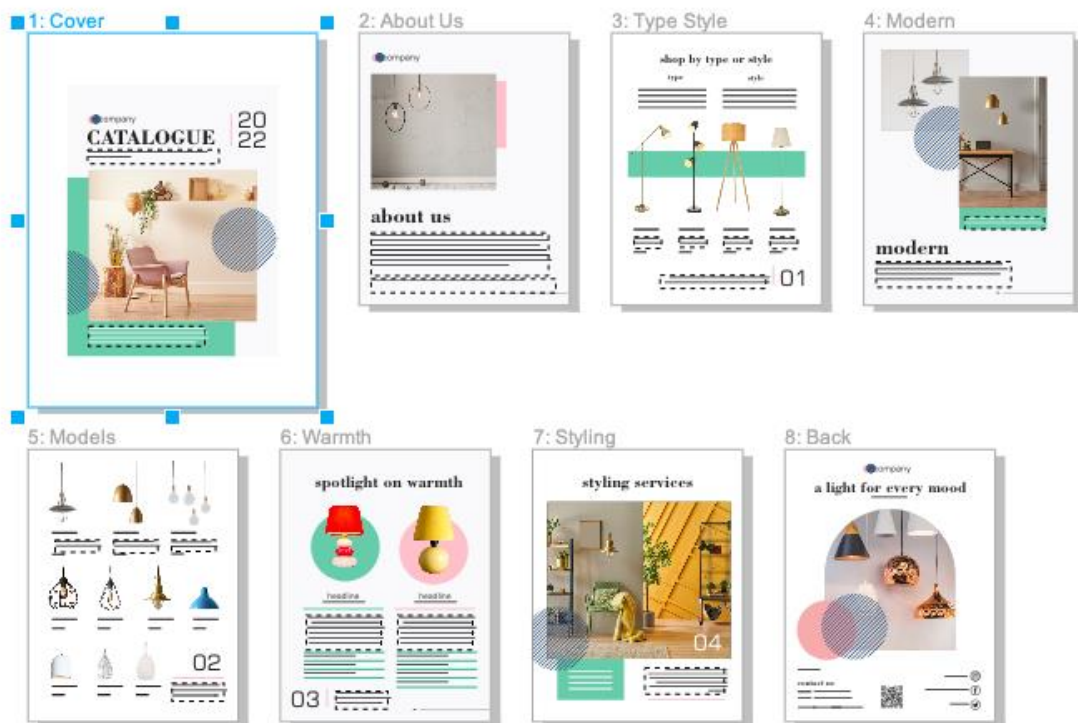
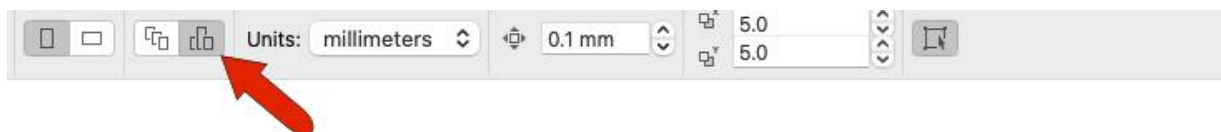
Multipage View

When viewing your document in Multipage view, via the **Pages** inspector, the zoom adjusts automatically to fit any type of page display, whether arranged in grid format or along a row.



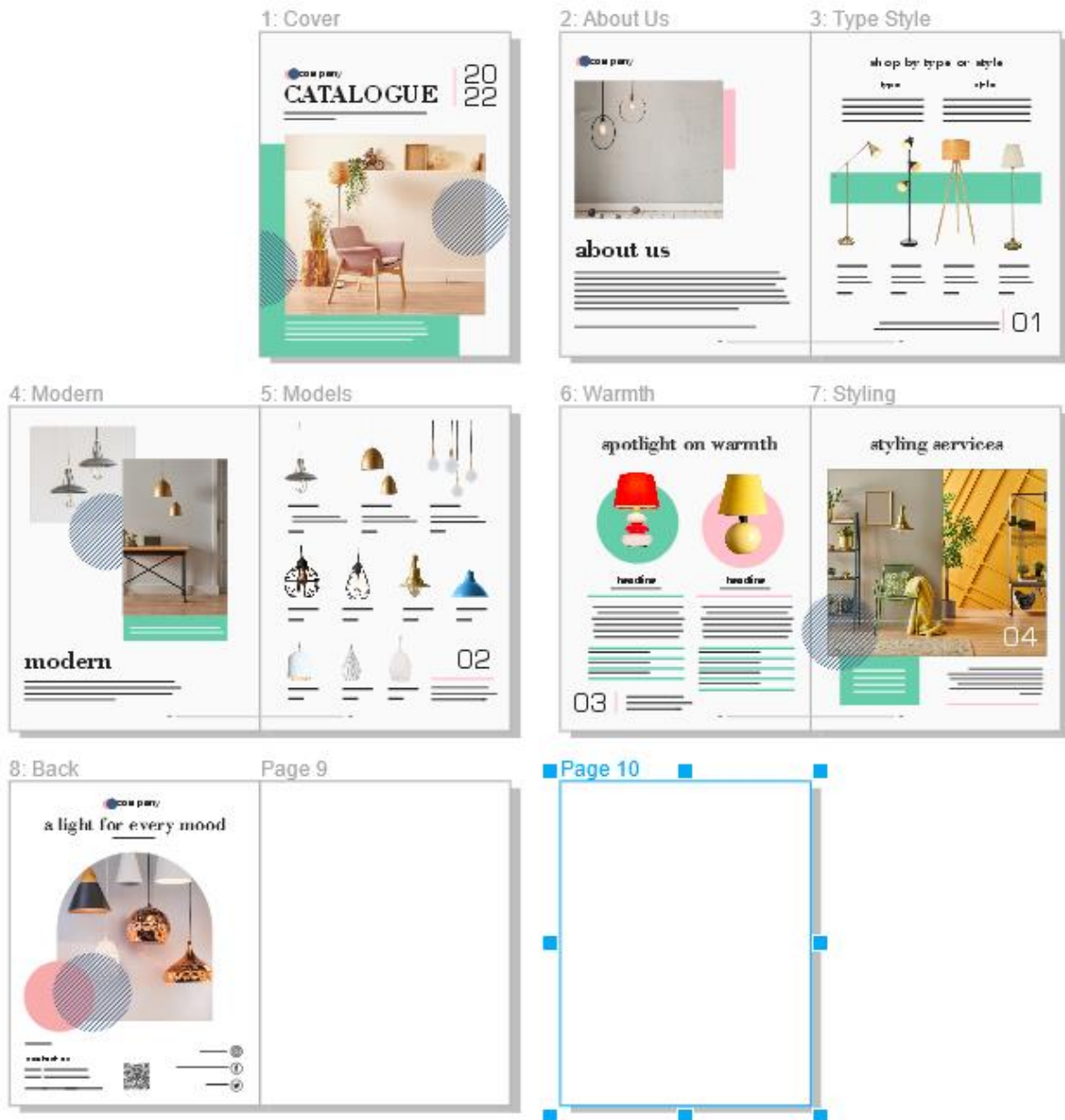
Double-clicking a single page thumbnail auto adjusts to that page.

Also, while in Multipage view, you can interactively resize all pages at once, either by extending margins to one side, or by using **Shift** to keep page contents centered.



You can also switch to **Single Page** mode to resize just one page.

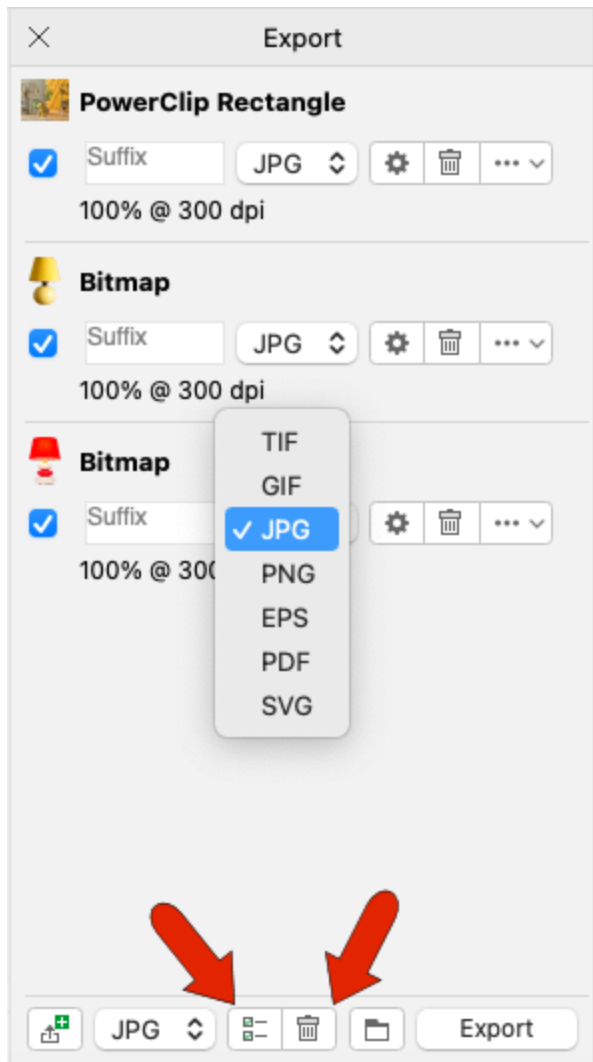
And if your document is open in **Facing Pages layout** and Multipage view, you can add two-page spreads, or a single page at the end of the document.



To learn more, watch our full tutorial [How to Use Multipage View](#).

Multi-asset Export

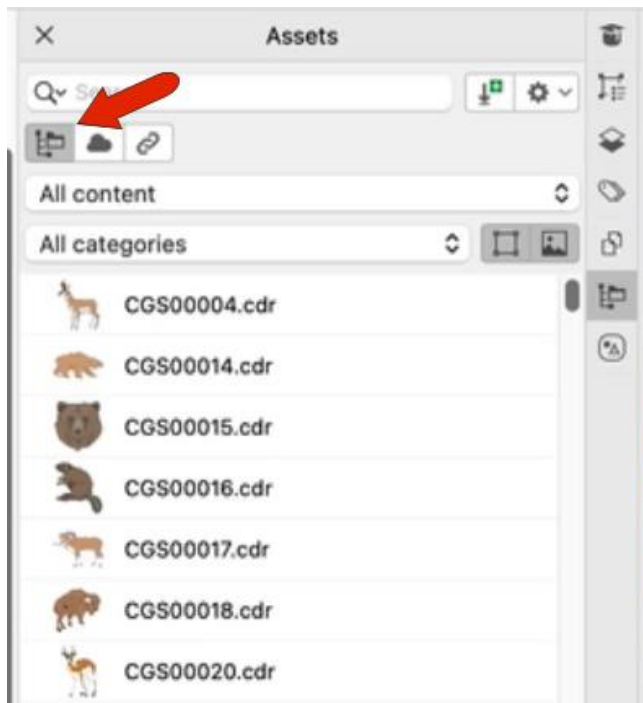
When exporting one or more elements of your document, the **Export** inspector now has additional file formats, including several raster and vector formats, as well as PDF. You can also now clear the entire inspector at once, using the **Select All** icon and the **Delete Items** icon.



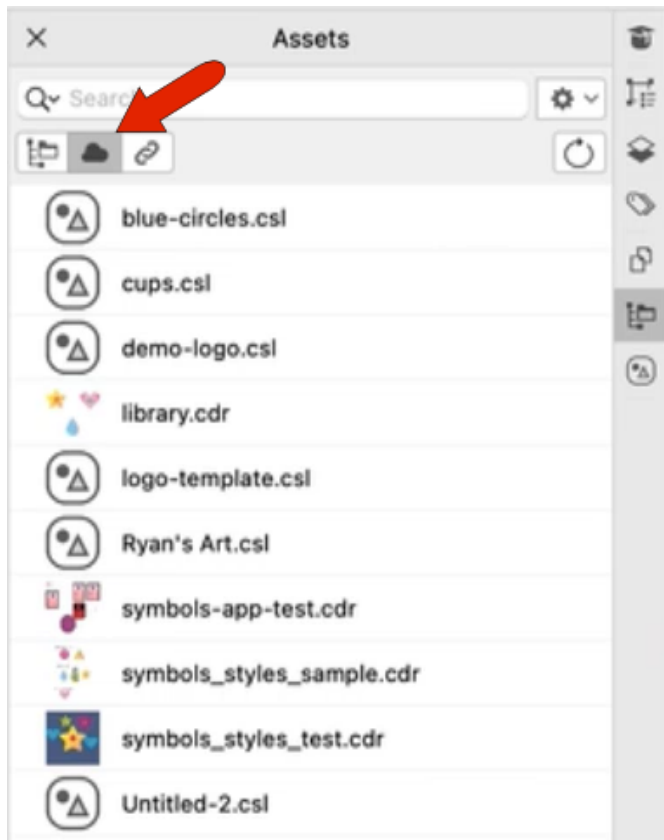
To learn more, watch our full tutorial [How to Export Multiple Assets at the Same Time](#).

Asset Management

The new **Assets** inspector offers quick access to all symbol libraries, enabling you to keep assets synced and up to date. This searchable inspector offers many categories of content and replaces the **CONNECT Content** inspector, which still exists as a tab.

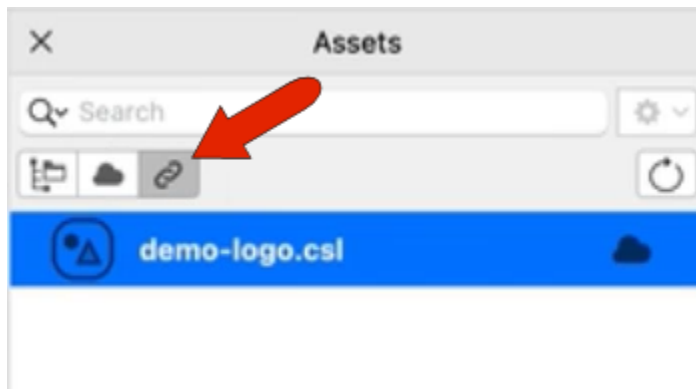


This inspector also provides cloud access, enabling you to upload, download and share assets with colleagues.



When cloud-based assets are changed, everyone with access to those assets is notified, and their cloud accounts are synced to have the latest versions.

The **Assets** inspector can also be used to link symbols to a document.

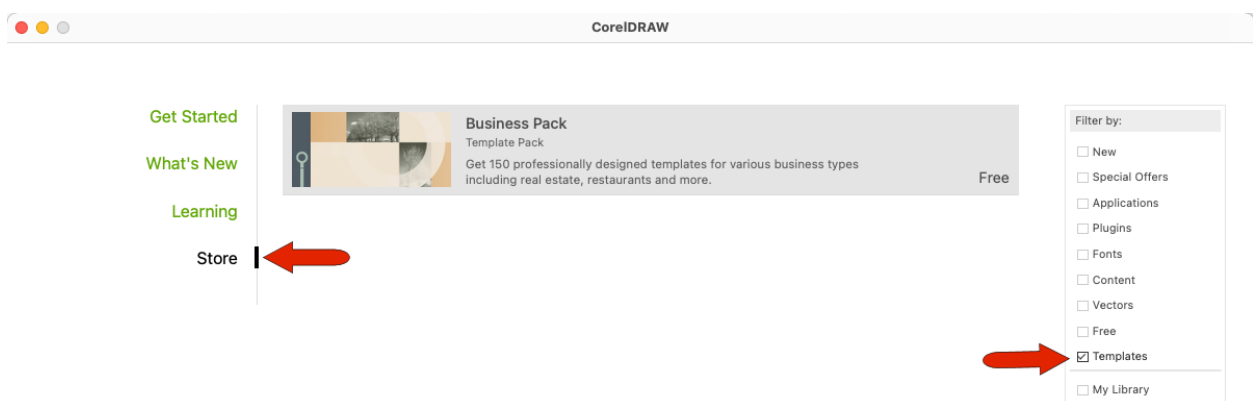


You can identify all linked symbols in the **Symbols** inspector as well.

To learn more, watch our full tutorial [How to Sync and Share Symbols](#).

New Templates

Dozens of premium templates are available for free to subscribers only, with new templates added regularly. You can find templates from the Welcome Screen by going to the Store, and filtering for templates.



You can also access the store from the **New from Template** window, by clicking the **Get More** icon.

