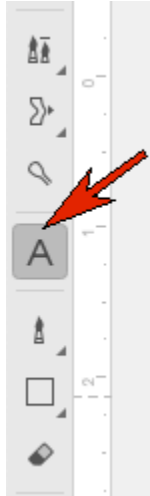


Using the Text Tool in PHOTO-PAINT

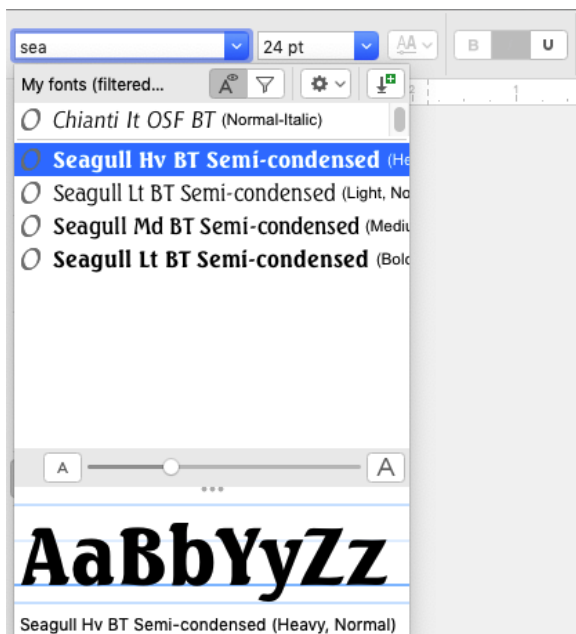
Learn how to use the Text tool in PHOTO-PAINT to add text to your photo editing projects. This tutorial will review how to add, format and edit text.

Adding and Editing Text

In our first example, we'll add text to a beach photo. Click the **Text** tool icon on the toolbar or press the **T** key as a shortcut to activate the tool.



Once you activate the **Text** tool, the property bar will provide a number of settings that you can use to format and edit your text. To select a font, click on the **Font List** dropdown. You can scroll down to see all of the fonts installed on your computer, and if there's a specific font you want to use, such as Seagull, just start typing the font name.

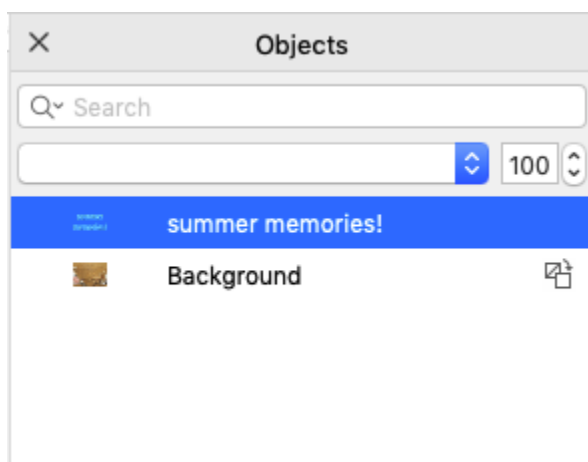


You can also set the **Font size**, **Alignment**, and **Character** and **Line spacing**. To set the font color, click a swatch in the **Color** palette on the right.

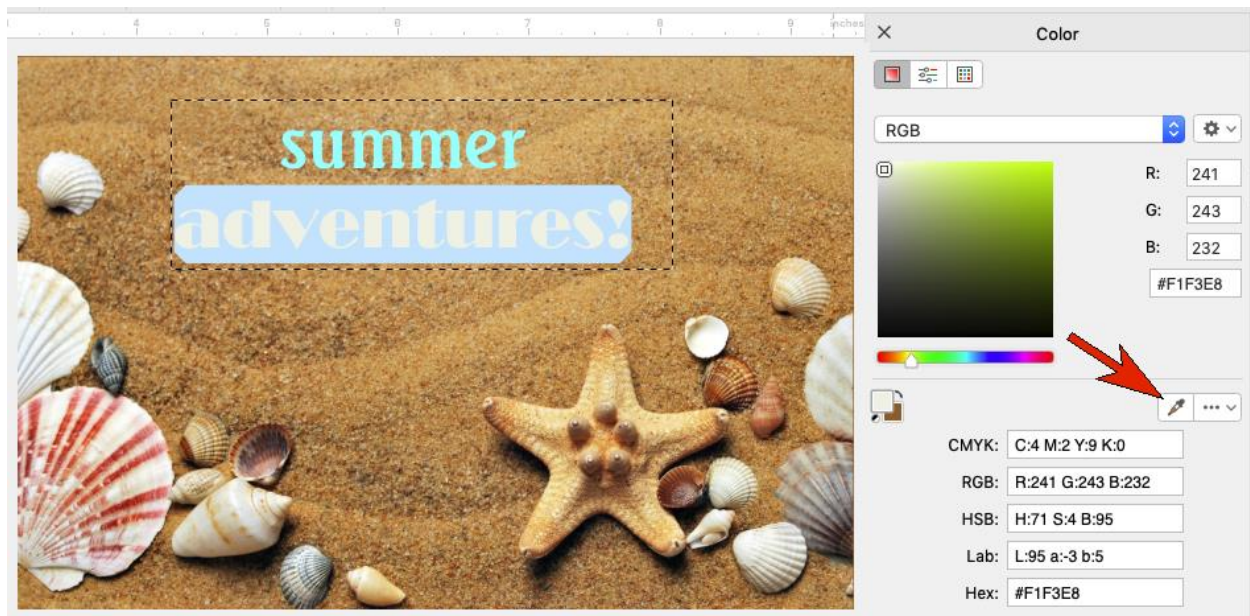
Click where you want to place the text, type what you want to appear, including line breaks, and click outside when finished.



In the **Objects** inspector (**Window > Dockers > Inspectors**), the text is listed above the background.



While the **Text** tool is still active, you can click back inside to make changes. You can edit the text itself or highlight specific characters to change font or size. You can change the color by clicking a different swatch. Or you can open the Color inspector and use the Eyedropper tool to sample a color in the photo.



With the **Pick** tool active, you can reposition the text. Clicking on the text again with the **Pick** tool will bring up the rotation handles, which you can use to rotate or skew the text.

NOTE: you can also use the **Pick** tool to resize your text, however this can distort the characteristics of your chosen font, so it is best practice to resize text using the **Font size** setting on the property bar.



You can even use the **Drop Shadow** tool to make the text really stand out.

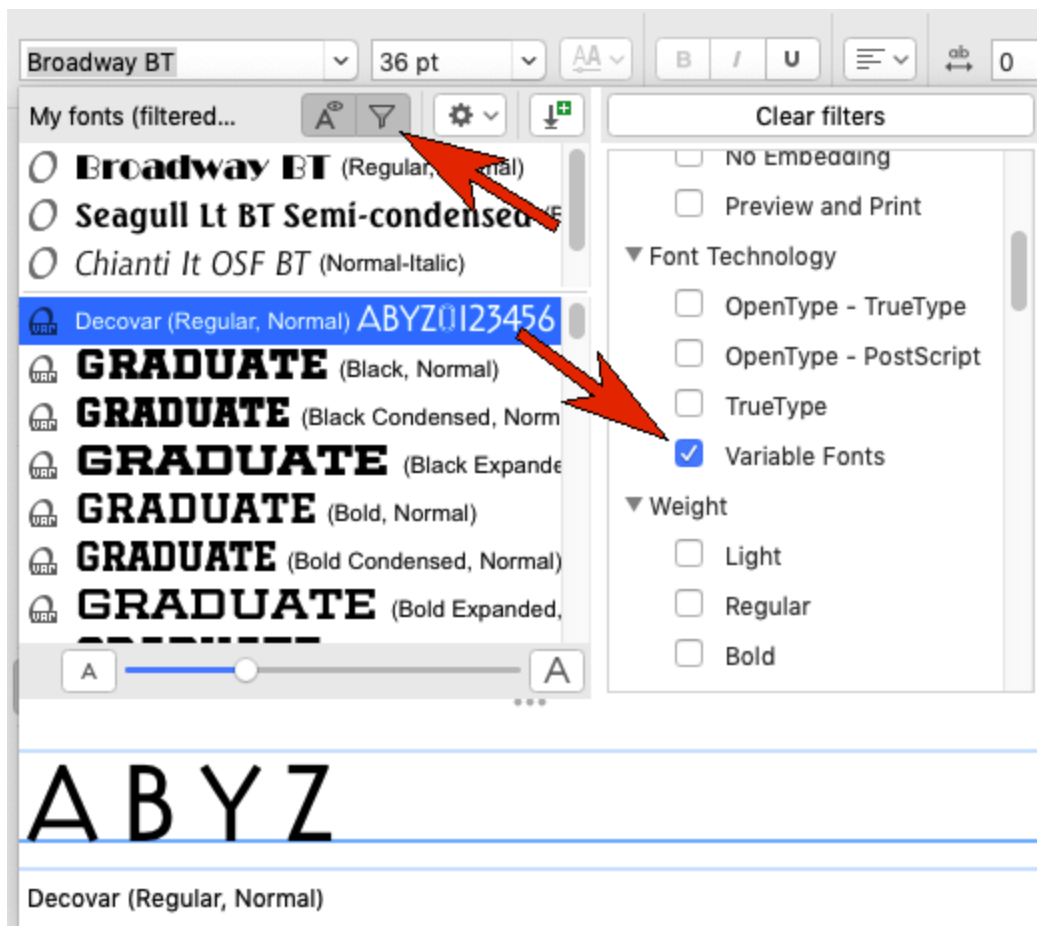


To learn more about shadows, watch our full tutorial [Adding Depth with Shadows](#).

TIP: If the **Pick** tool is active, you can always double-click a text object to return to the **Text** tool and edit the text.

Working with Variable Fonts and OpenType Fonts

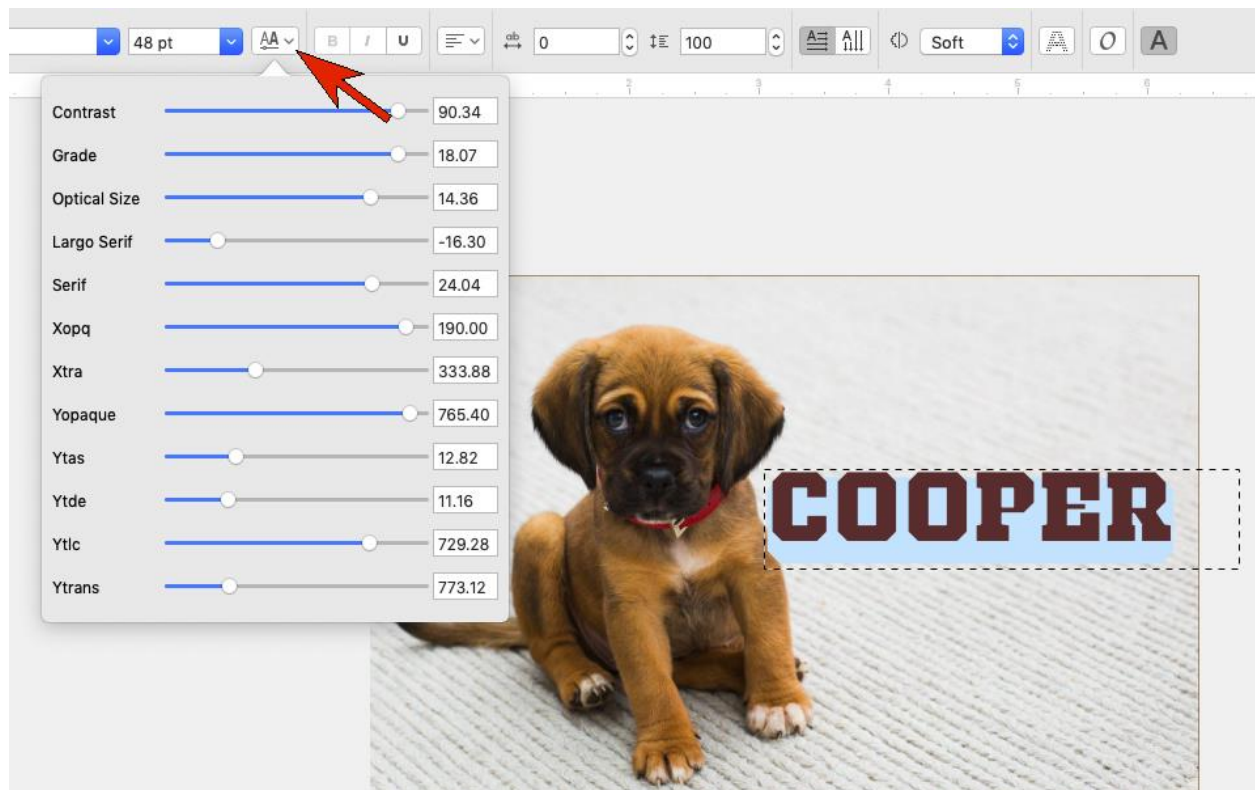
In PHOTOPAINT 2020, we added support for variable fonts. Variable fonts enable you to fine-tune some properties of the text beyond what is available on the property bar. To find variable fonts, open the **Font list** dropdown and click the **Filter** icon. Under **Font Technology**, check the **Variable Fonts** option.



Choose one of the fonts in the filtered list, set the size and pick a color, and add the text.

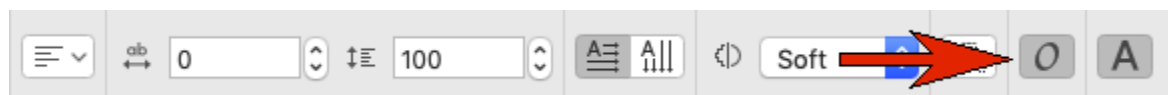


Then highlight the text and click the Variable Fonts icon on the property bar. The menu of sliders that appears can be used to adjust all sorts of properties of these characters.

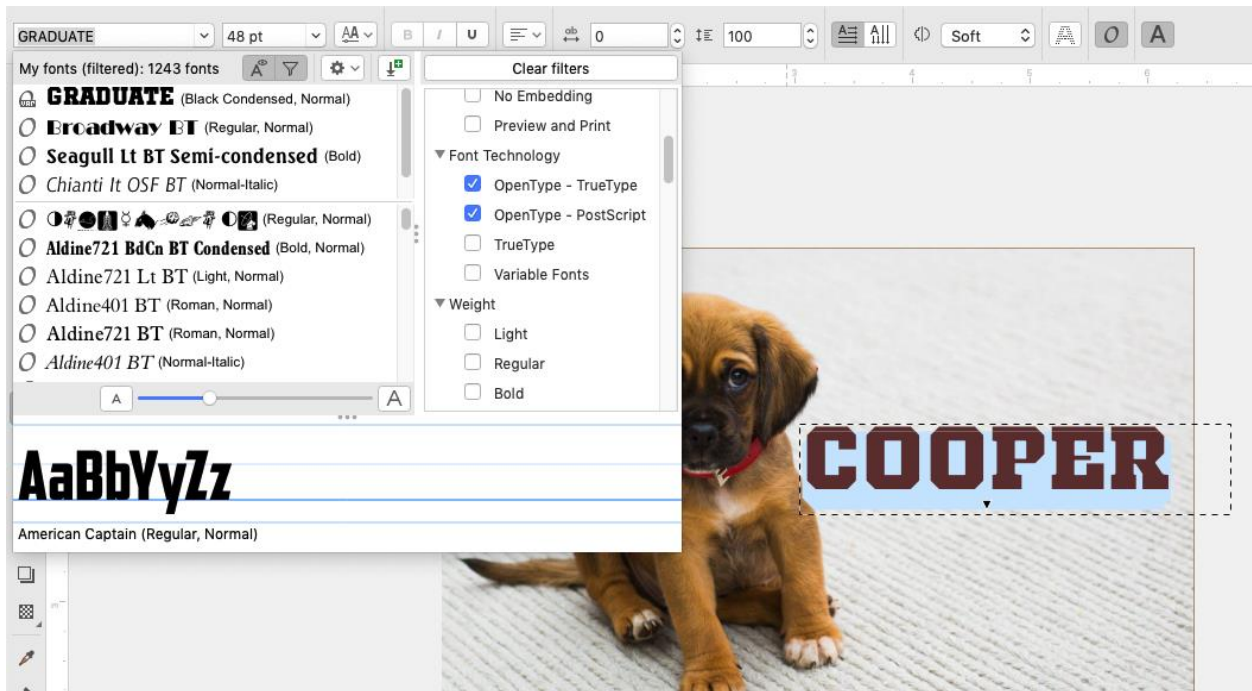


To learn more, watch our full tutorial [Working with Variable Fonts](#).

Some OpenType characters can also be changed when the **Interactive OpenType** option is enabled on the property bar.



With the text still highlighted, open the **Font list** dropdown and filter it to show **OpenType Fonts**.



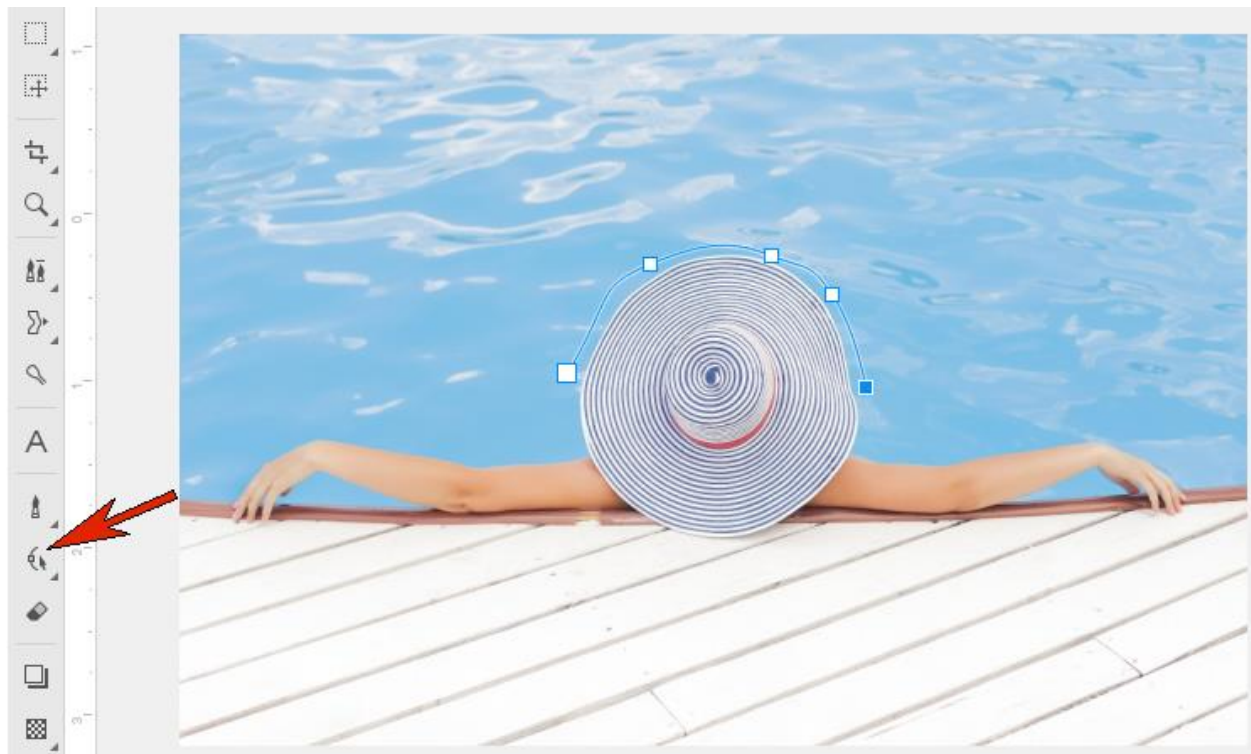
Some Open Type characters will have a small arrow you can click for alternate sets of characters.



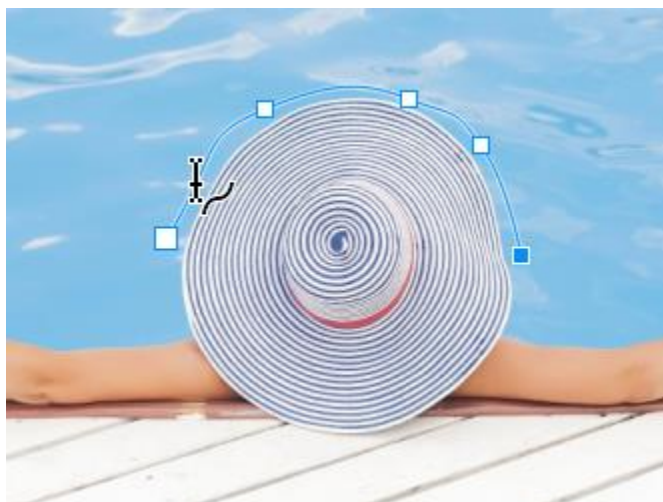
Fitting Text to a Path

Text can also fit to a path. The **Path** tool can be found in the **Shape** tool group on the main toolbar. By default, this tool group is represented by the **Rectangle** tool icon, so you need to click the small arrow to expand the tool group and activate the **Path** tool.

In this example, we want to add some text around the hat. With the **Path** tool, we click at multiple points along the path we want to create, and double-click to finish the path.



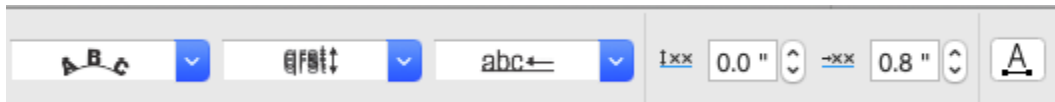
Now when we activate the **Text** tool and move the cursor over the path we created, the cursor symbol changes from an **A** to a curve symbol while on the path.



When your cursor shows the curve symbol, click and start typing, and the text follows the curve.



On the property bar, you can adjust the distance from the path and the offset, as well as Text Orientation, Vertical Placement, and Horizontal Placement.



NOTE: The path itself is used just for placing the text and won't appear in the final image when exported or printed.

You can also make existing text fit a path. In this example, we have our path created and we also have some text created.



Use the **Pick** tool to select the text, then go to **Object > Text > Fit Text to Path**. Then click the path and the text will move to fit the path.



To separate the text from the path, go to **Object > Text > Render as Object**. Now you can move the text independently.

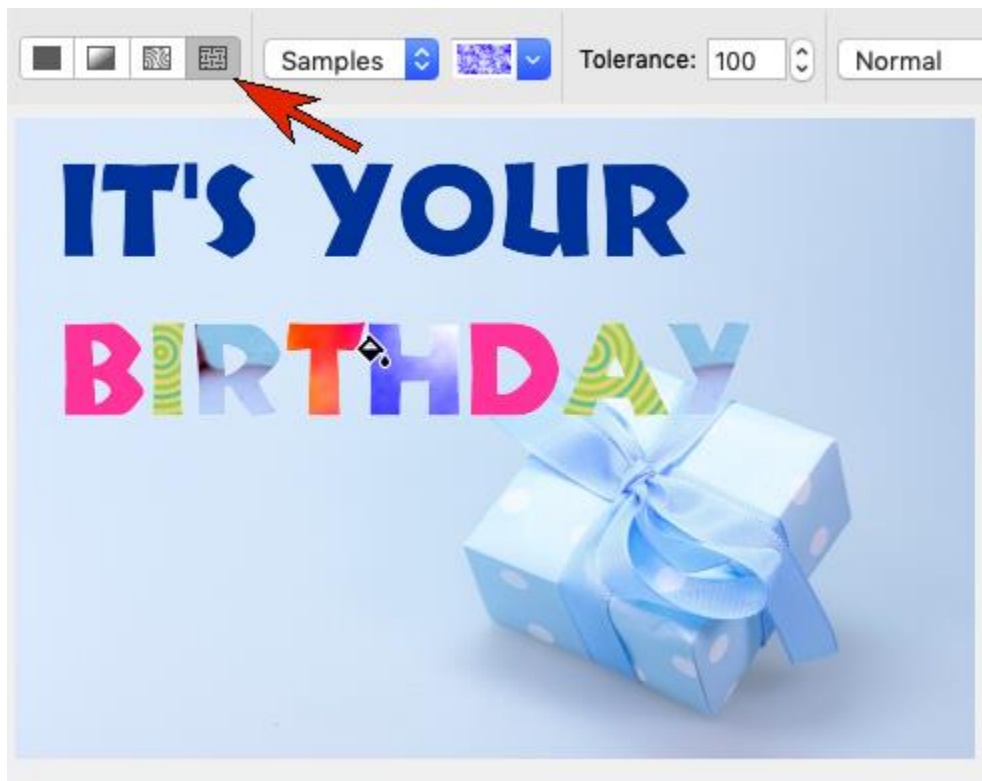


Adding Fills to Text

In addition to using different colors for different characters, you can also apply fills. With the text selected with the **Pick** tool, activate the **Fill** tool.



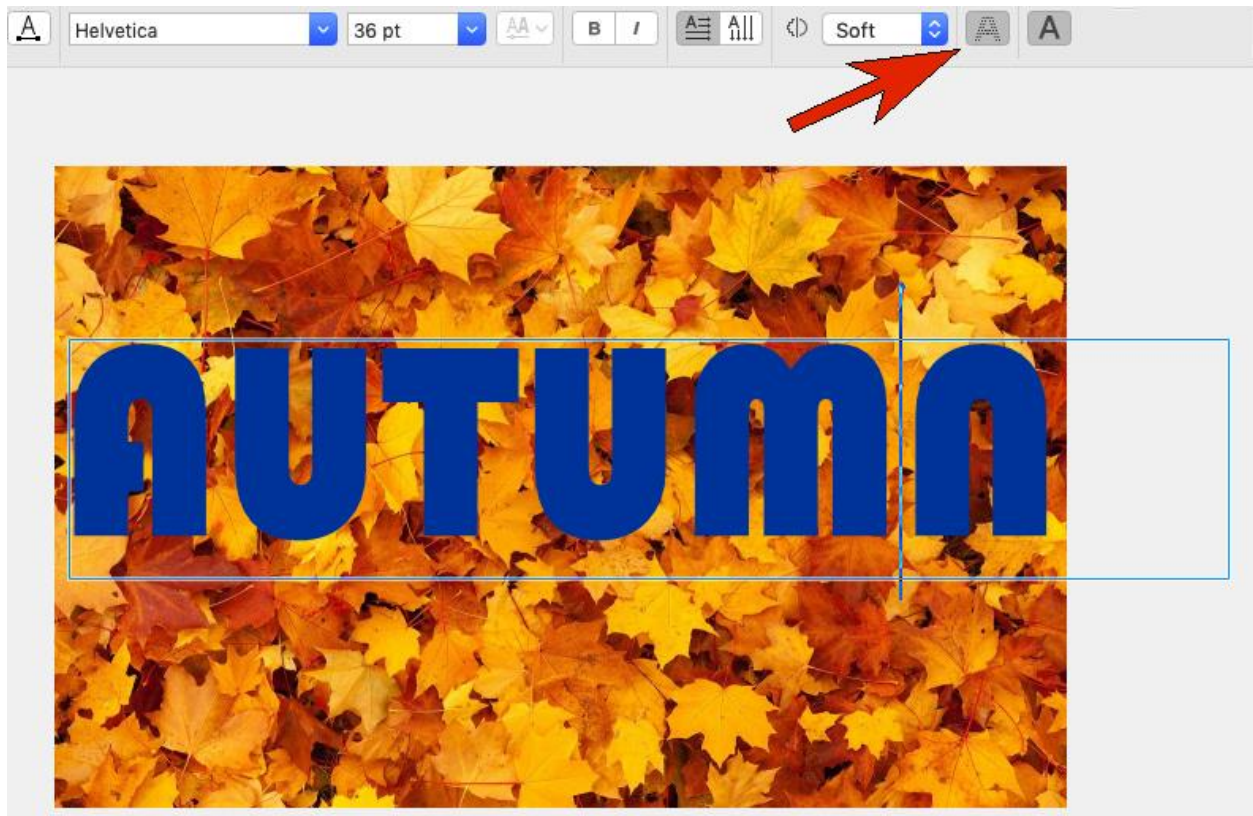
On the property bar, you can choose solid fill, fountain fill, bitmap fill, or texture fill. Just be sure to click each time inside the character itself.



NOTE: If you edit the text *after* the characters have been filled, the fills will be lost. So be sure that your text is final before adding fills.

Text Masks

You can use text as a mask. In this example, we have a background image and some text. With the **Pick** tool active, double-click the text to edit it. Then click the **Create Mask** icon on the property bar.



Click outside to finish and you will see the mask marquee around the letters.



By default, the area inside the mask, or inside the letters, is what will **not** be kept. So if you want to delete the background image outside the letters, first go to **Mask > Invert Mask**. Now press **Cmd + X** to cut, which results in just the filled letters.



To learn more, watch our full tutorial [Using Masks in PHOTO-PAINT](#).

You can copy and paste these letters onto a different background, and use the **Pick** tool to move, rotate and resize.



If you would like to learn more about the **Text** tool, watch our tutorial series on [Working with Text](#). Although these tutorials were created in CorelDRAW, you will find that many of the text options are available in PHOTO-PAINT as well.