

# How to Use the AI HDR Studio Plugin

This tutorial provides a quick demonstration of how to use the AI HDR Studio plugin to transform your photos into spectacular HDR images in 4 easy steps.

## Launching the Plugin

For this tutorial, we are using PaintShop Pro 2021 Ultimate to demonstrate the plugin, but you can also use the plugin with any version of PaintShop Pro 2019 and higher, and CorelDRAW Graphics Suite 2019 and higher.

You must have your photo already open to be able to use the plugin. Otherwise, the plugin menu command will be greyed out if there are no photos open or loaded.

- To launch the plugin from PaintShop Pro, go to **Effects > Plugins > AI HDR Studio**.
- To launch the plugin from CorelDRAW, go to **Bitmaps > Plugins > AI HDR Studio**.
- To launch the plugin from Corel PHOTO-PAINT, go to **Effects > AI HDR Studio**.

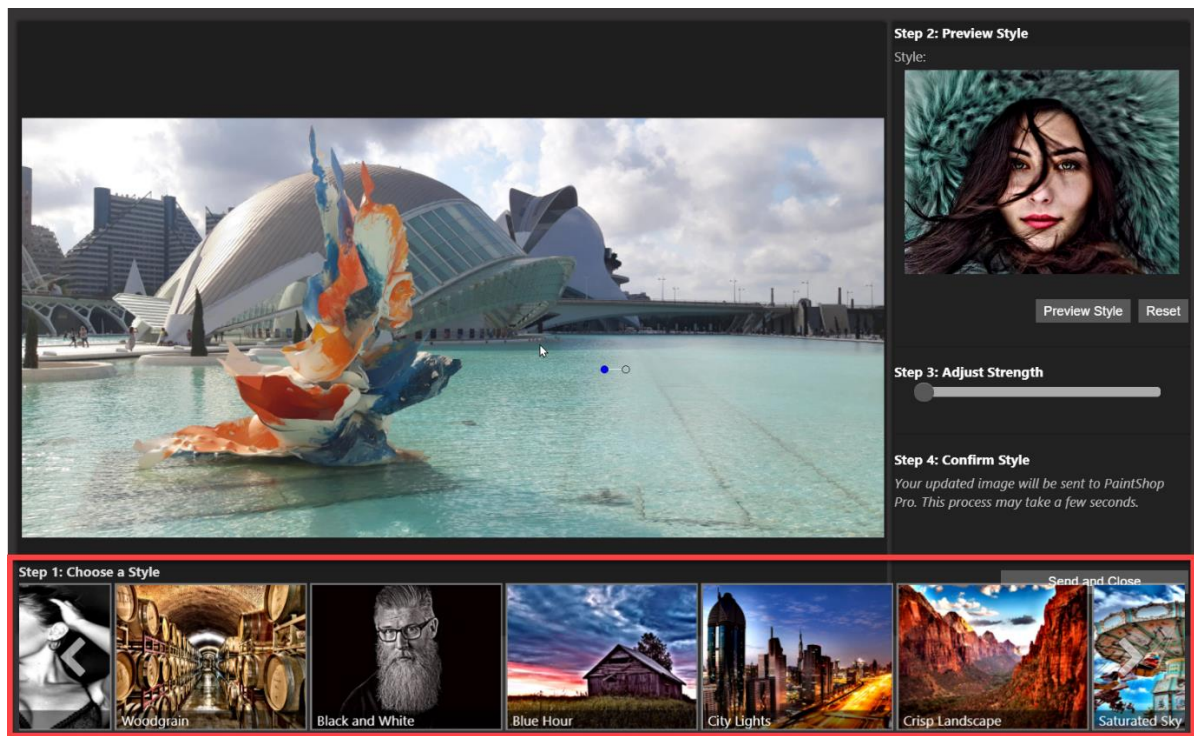
Once you have launched AI HDR Studio, the process will be the same regardless of which program you launched it from.

The plugin will open in its own window and has an easy 4-step process to add HDR effects to your photo.

## How to Use AI HDR Studio

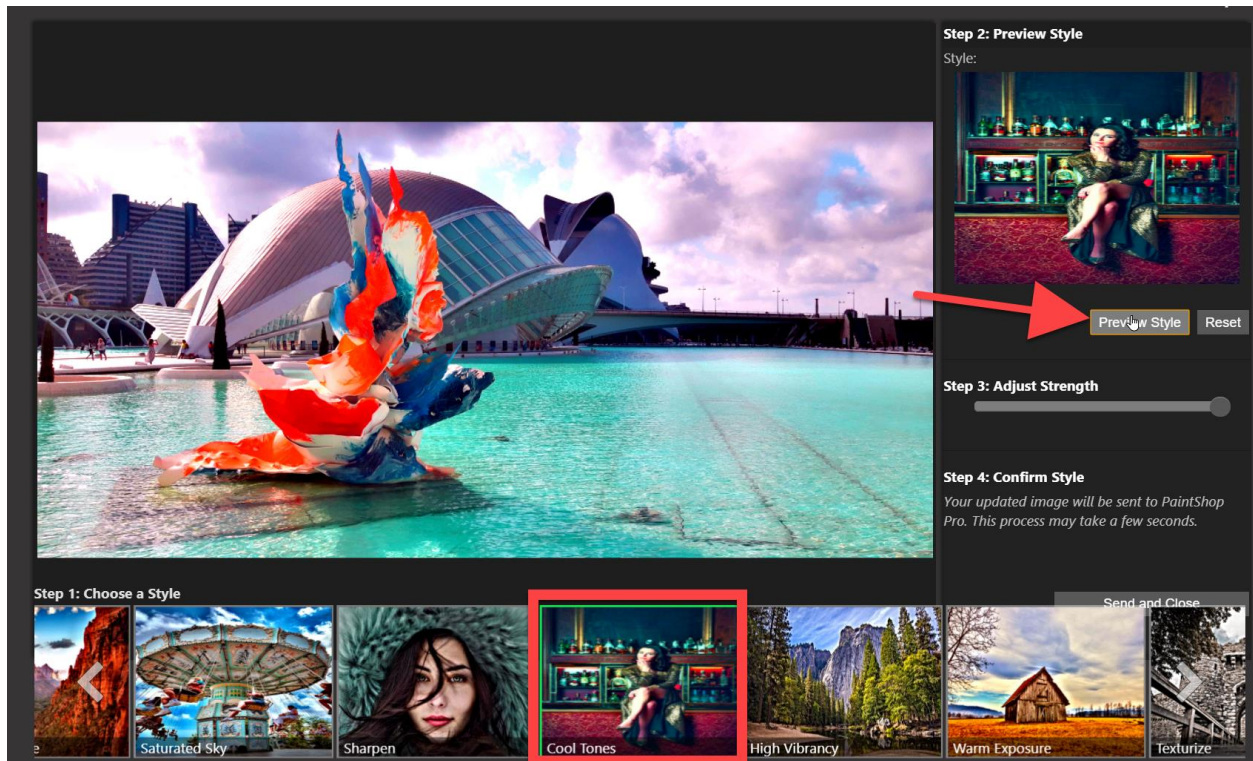
### Step 1: Choose a Style

Along the bottom of the interface, there are 15 different styles that you can scroll through to find one that will suit your photo. Once you have found one you like, click on it to preview.



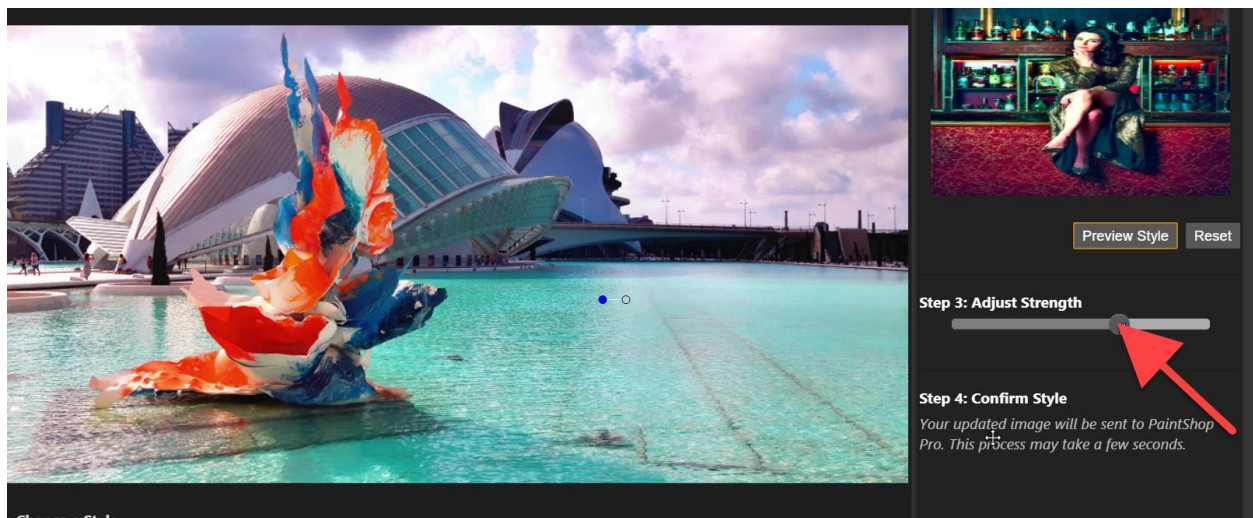
## Step 2: Preview Style

Click the **Preview Style** button to preview how your photo will look once the style is applied. If you're not satisfied with the effect, you can always click **Reset** to revert to your original image and go back to Step 1 to choose a different style.



## Step 3: Adjust Strength

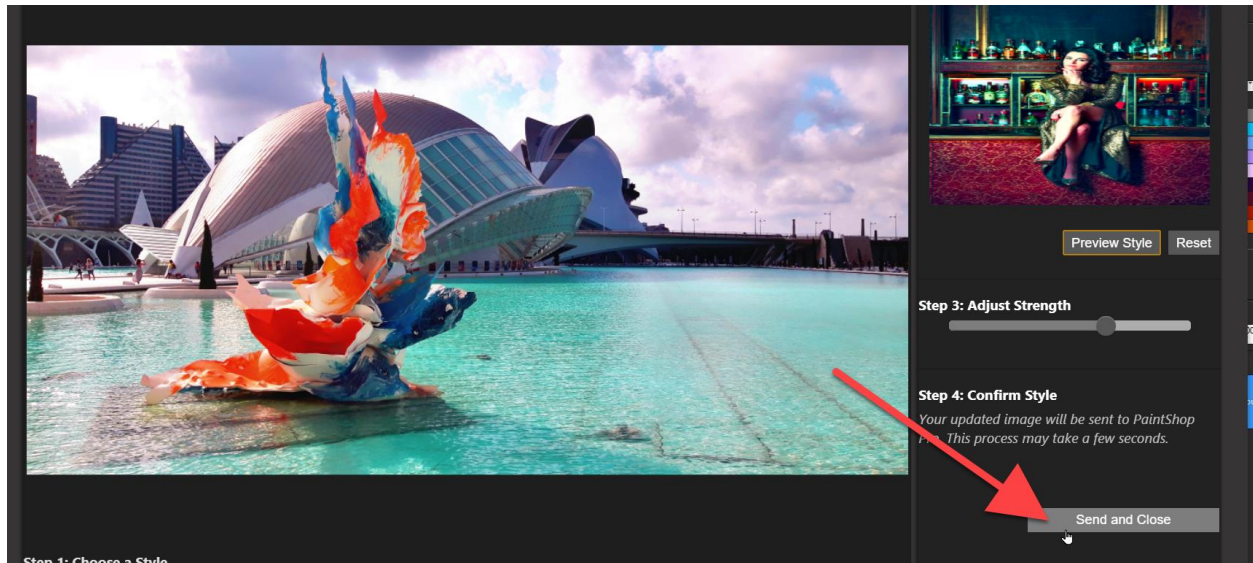
Adjust the **Strength** slider to increase or decrease the intensity of the preset.





## Step 4: Confirm Style

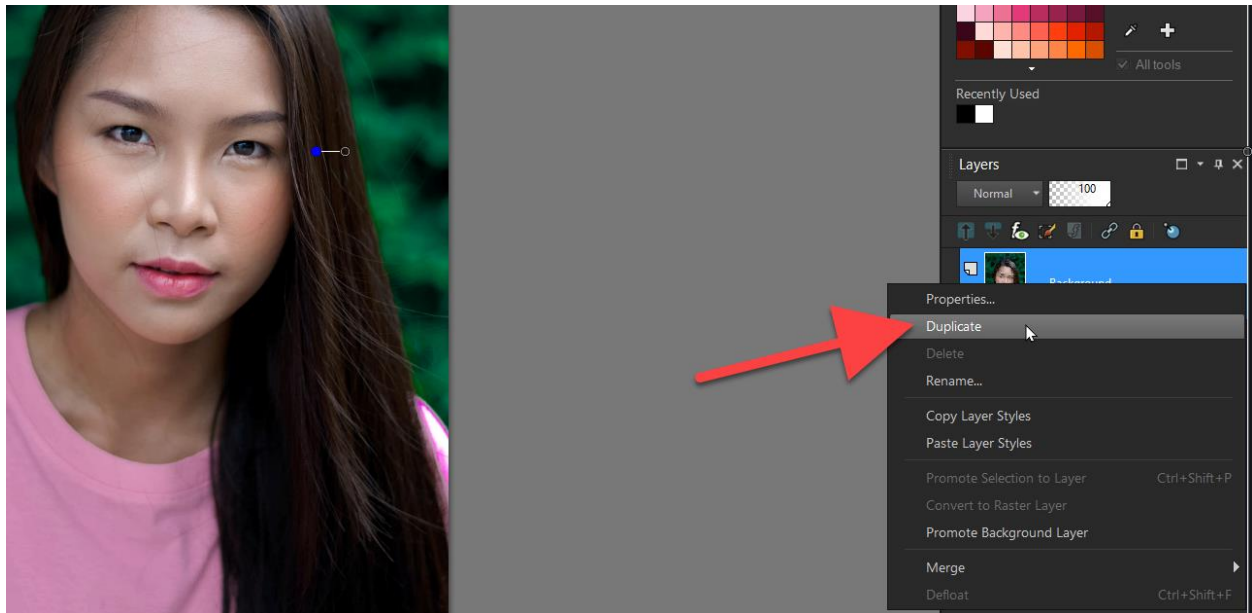
Once you're happy with your chosen style and the amount of strength, click **Send and Close** to send your updated image back into PaintShop Pro (or CorelDRAW or PHOTO-PAINT) where you can make any other edits you want.



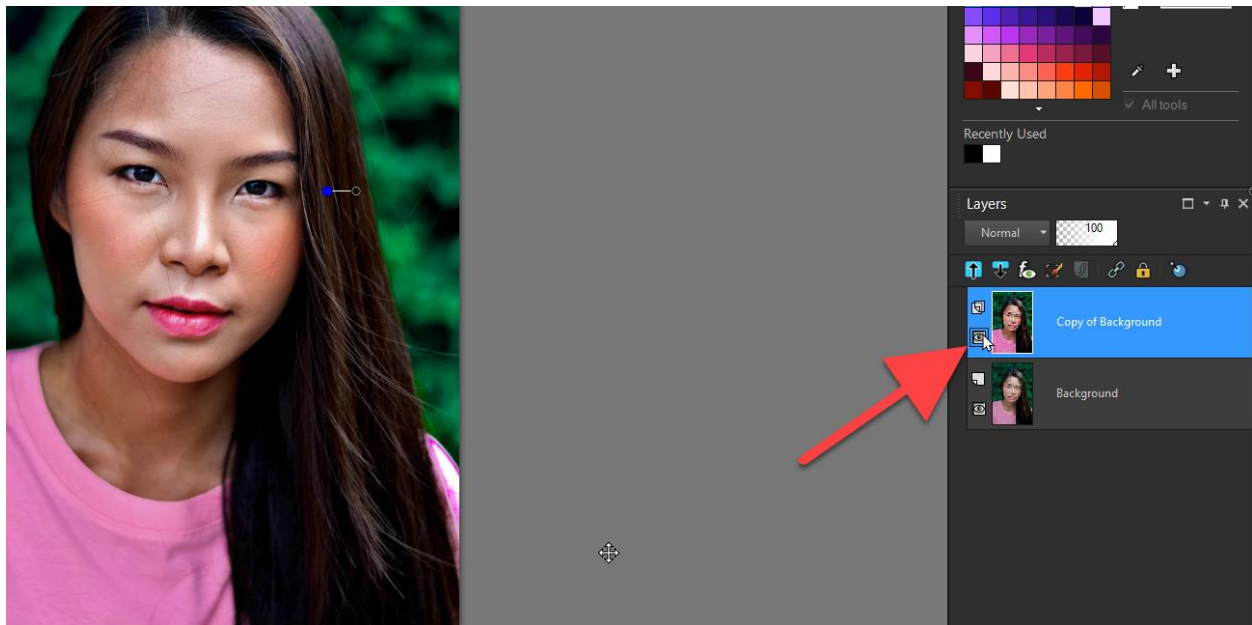
## Using Duplicate Layers

It's a good idea to duplicate your photo layer first and then launch the plugin with the duplicated layer active. This will preserve the original photo on its own layer so you can later compare it with the new version of the photo created with the AI HDR Studio Plugin.

- To duplicate a photo layer in PaintShop Pro, simply right-click on the layer in the **Layers** palette and select **Duplicate**.
- In CorelDRAW, select the photo with the **Pick** tool and go to **Edit > Duplicate** (or use **Ctrl + D**). In the **Objects** docker (**Window > Dockers > Objects**) you can create a new layer if you wish by clicking on the **New Layer** icon at the bottom of the docker. Then drag the duplicated photo onto the new layer.
- In PHOTO-PAINT, right-click on the photo in the **Objects** docker (**Window > Dockers > Object**) and select **Duplicate** (or use **Ctrl + D**).



Now you can run the plugin on the active duplicated layer and follow the 4-step process to apply an HDR effect. After you have clicked **Send and Close** to return to PaintShop Pro (or CorelDRAW or PHOTO-PAINT), you can use the **Visibility** (eye) icon to toggle the layer on and off to see how it compares with the original image.



You can create several duplicate layers to experiment with different presets, using the **Visibility** icon to toggle on and off and see which one you like the most.

For advanced users, you can also use the duplicate layers to experiment with different blend modes and effects.

**TIP:** It is helpful to rename each layer to keep track of which preset you have used on each image.



It's just that easy to completely transform your photos using the AI HDR Studio plugin!