

# How to Make Before and After Images

In this tutorial, you'll learn how to create before and after images for social media using two different methods in PaintShop Pro.

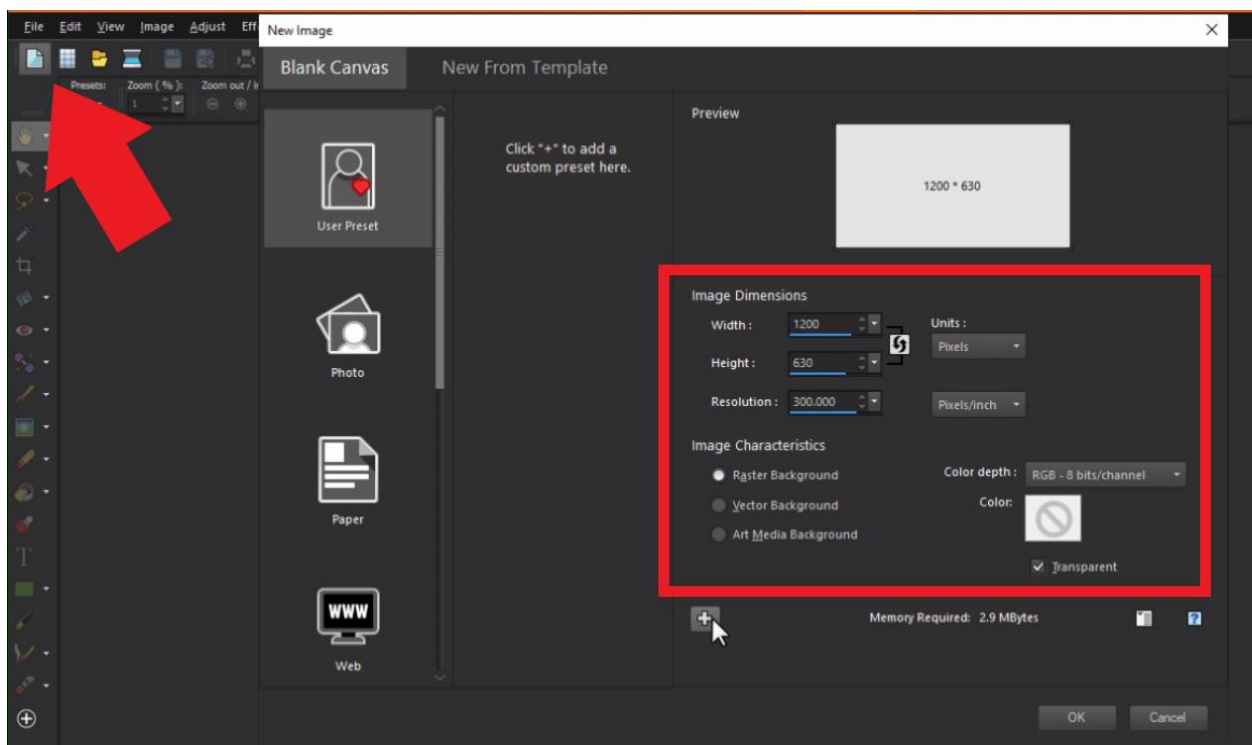
It is always best to check your preferred social media platform for the most up to date requirements for image sizes, but here are some common dimensions:

- Facebook post image size – 1200 x 630px (3:2 aspect ratio)
- Instagram post image size – 1080 x 1080 px (1:1 aspect ratio)
- Twitter post image size – 1024x 512 px (2:1 aspect ratio)

## Method 1: Side-by-Side Before and After Images

This method is a great way to show off before and after shots of home makeovers and renovations, weight loss or fitness progress or even if you want to have fun recreating a childhood pose 20 years later.

- Open up PaintShop Pro in the **Edit** workspace and click the **New Image** icon.
- Enter desired width and height, set the color to transparent and click **OK**.



**NOTE:** If you often create a certain image size, you can click on the **plus** sign in the New Image window to create your own preset.

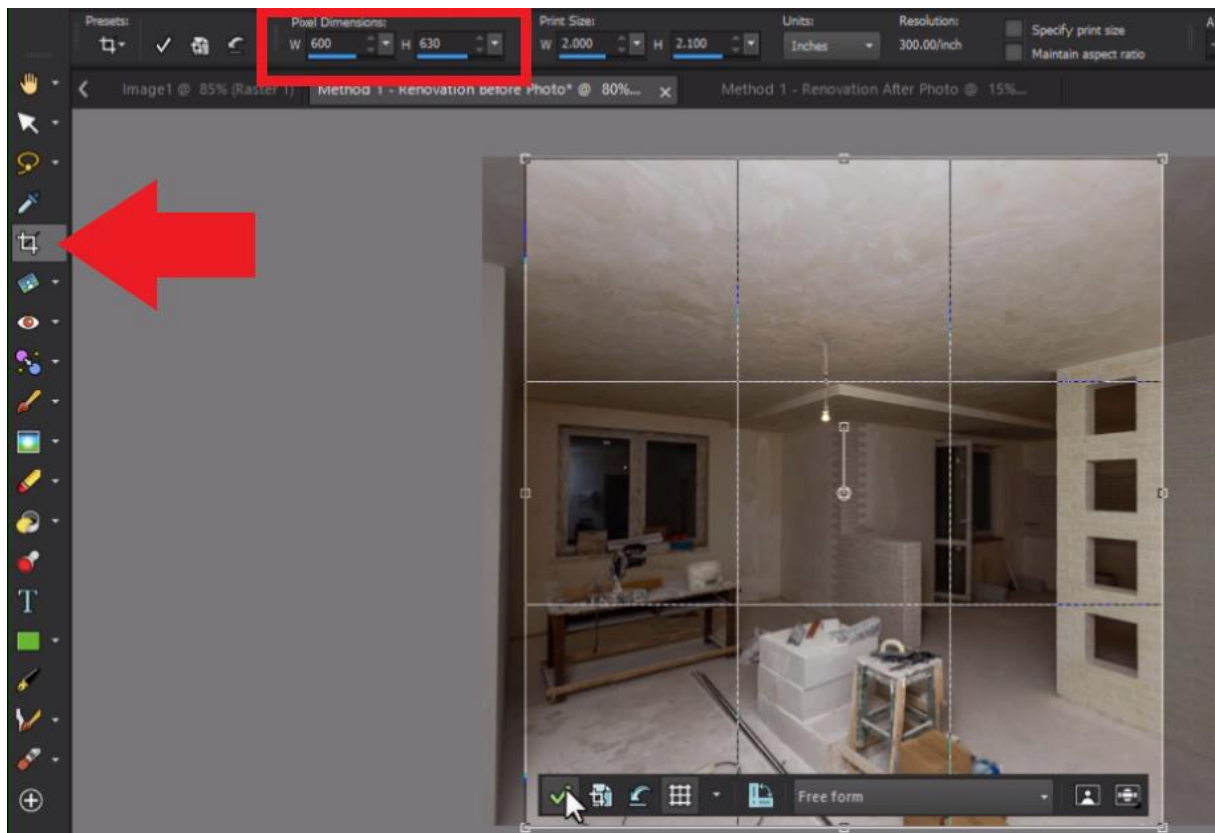
Open the before and after images you want to use.

To place them side by side evenly, each image will need to be resized or cropped to fit the full height but only half the width of your canvas. In this example, we'll use the Facebook image size, so each image will need to be 600 x 630px.

**TIP:** If you don't already know the size of your images, you can check out the image information by going to **Image > Image Information** or by right-clicking on the image and selecting **Image Information**.

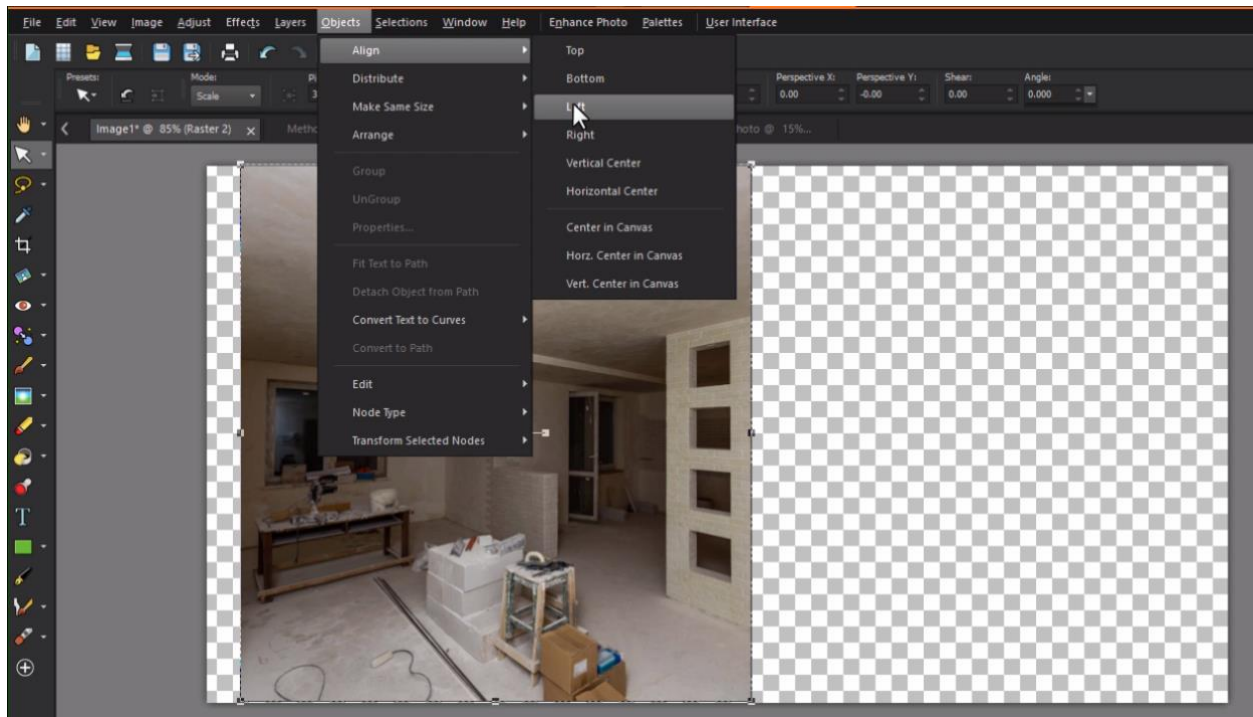
Depending on the original images, you can choose to crop or resize, or both.

- Resize the before and after images by clicking on **Image > Resize**, adjust the height to 630px, then click **OK**.
- Click on the **Crop Tool** icon and add your width dimensions. Adjust the position to where you want to crop your image and click **Apply**.

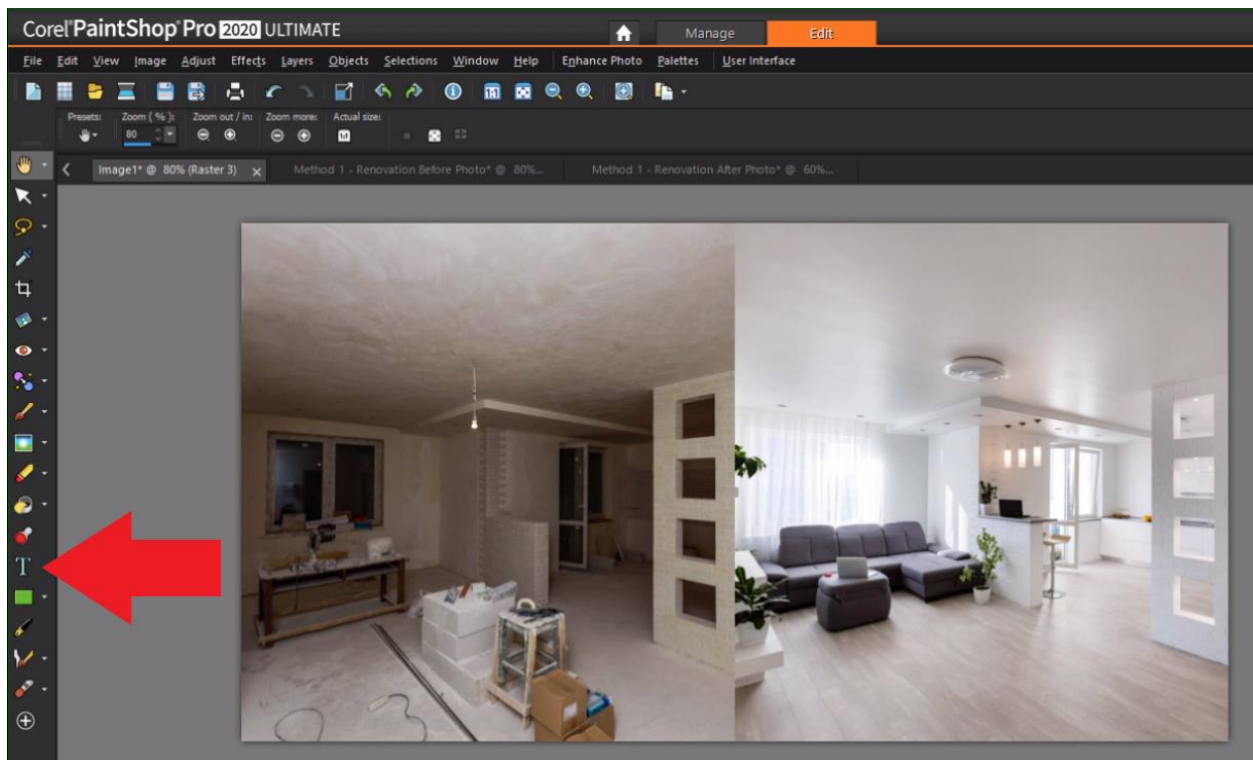


- Go to **Edit > Copy**, then go to the new blank image.
- Go to **Edit > Paste as New Layer**.

From here, use the **Pick** tool to align your image or go to **Objects** and use the **Align** commands to place it exactly on the left side of the canvas.



- Repeat these same steps with the after image and place it on the right side.



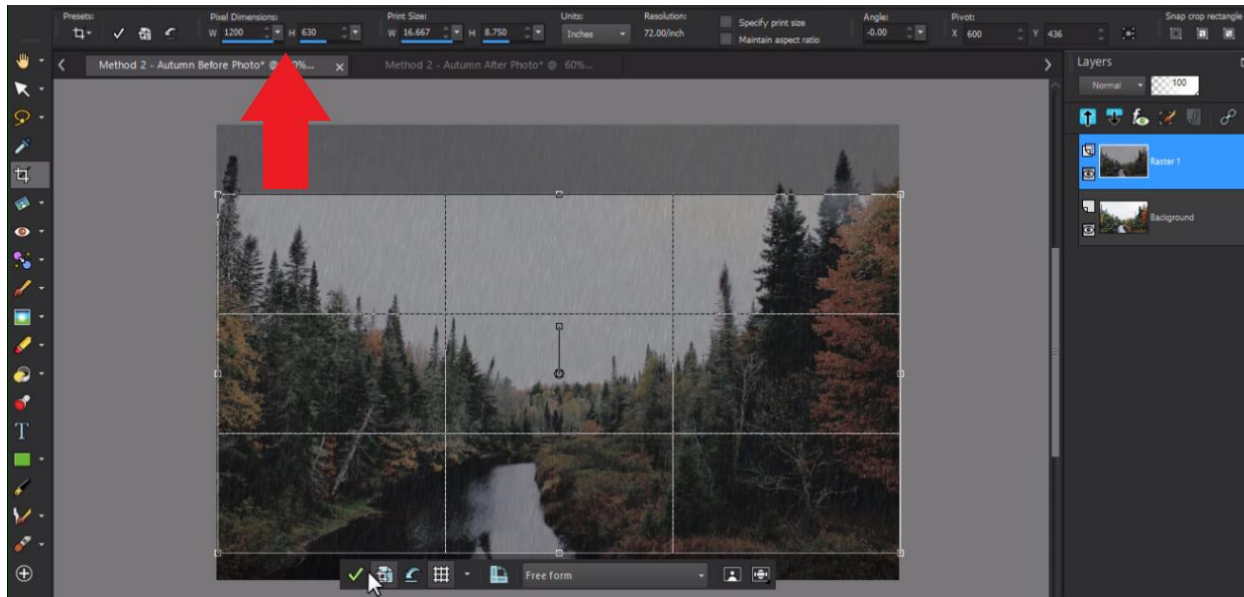
- Use the **Text** tool on the left toolbar to add “Before” and “After” text to your images.



## Method 2: Before and After Split Images

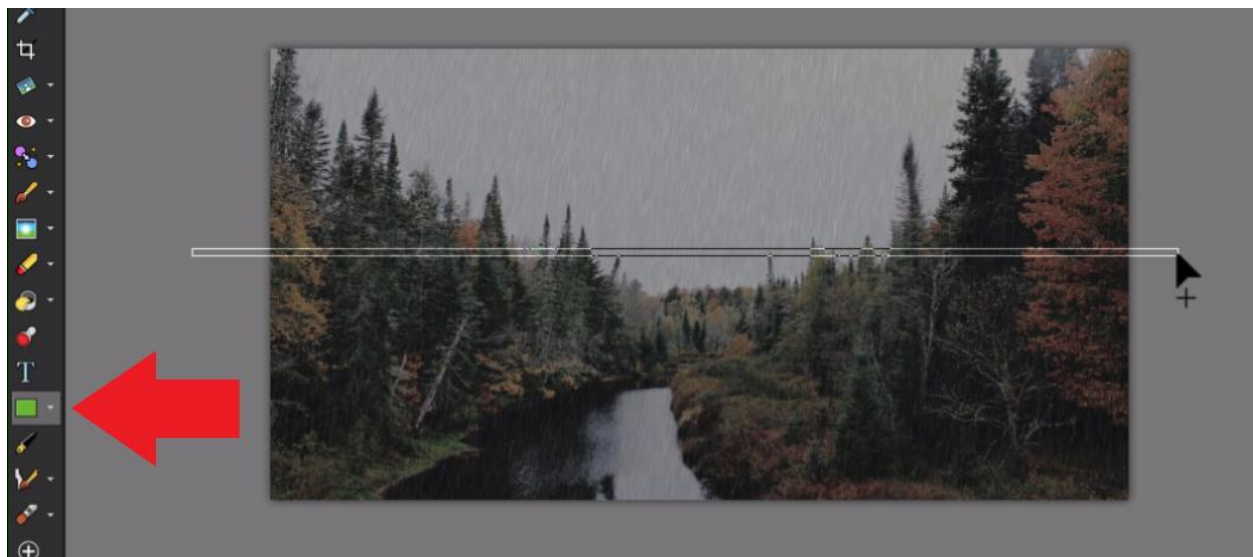
In this method, you'll learn how to create a before and after split image which is a creative way to show off your image editing skills. In this example we are using the [Rainy Day script](#) to add a falling rain effect to a fall landscape image.

- Open the original image and the after image if you've already done the image editing.
- If you haven't yet created the after image, make sure you are working on a duplicate copy to preserve your original as you go ahead and add the effects and enhancements to your image.
- Copy the after image and paste it as a new layer on the before image.
- Make sure to crop and resize the image to your desired dimensions as we did in the first method.

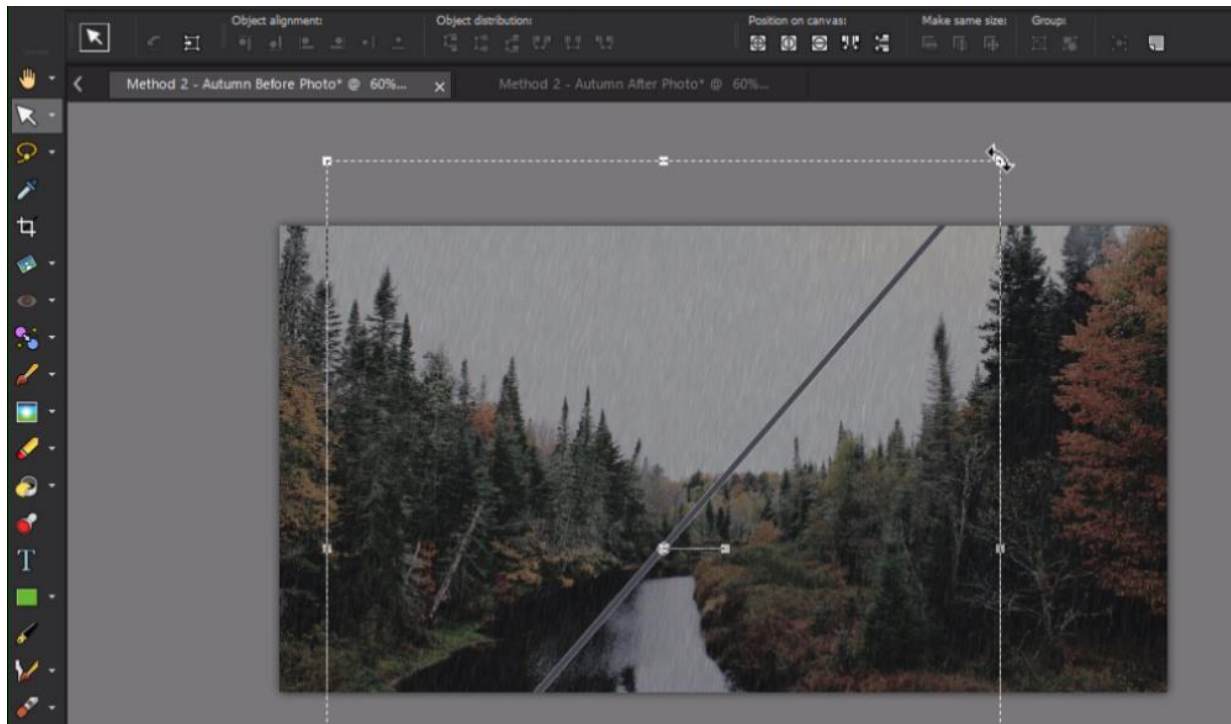


- Use the **Rectangle** tool to draw a thin vertical rectangle as a divider.

**TIP:** Zoom out so your image isn't full screen and draw the rectangle to extend off the canvas a bit on the top and bottom which is helpful if you want to rotate it on an angle later.



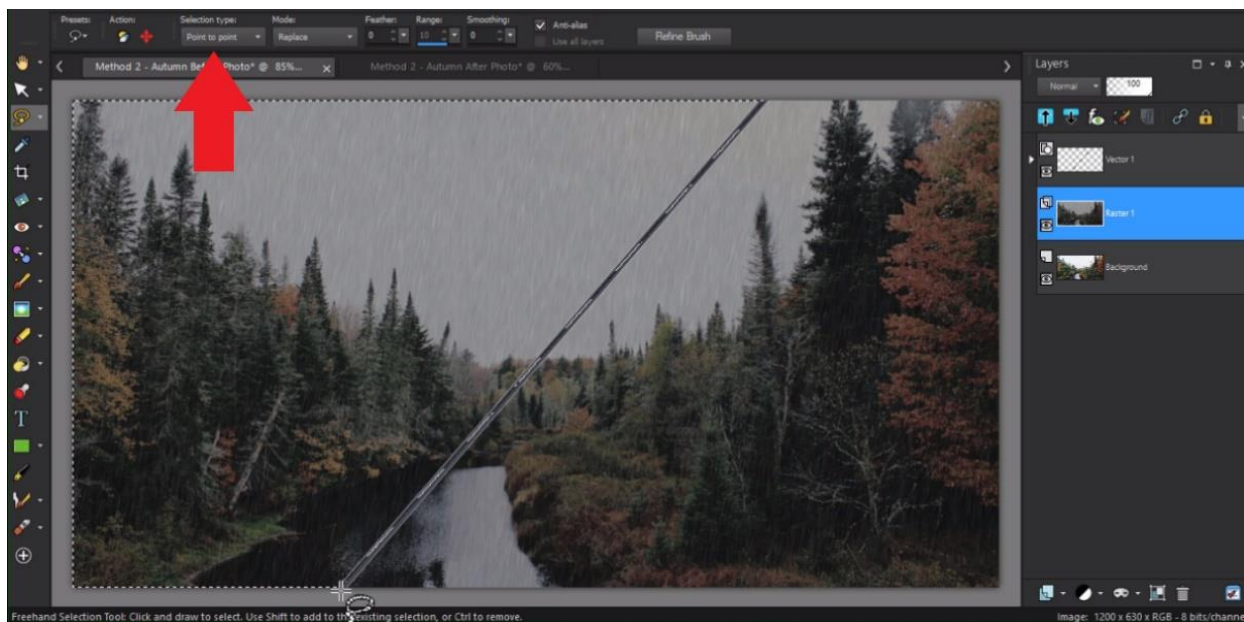
- Decide where you want to split the image in half, whether that be horizontally, vertically or on an angle. Or you can place the divider off-centre for an asymmetrical look.



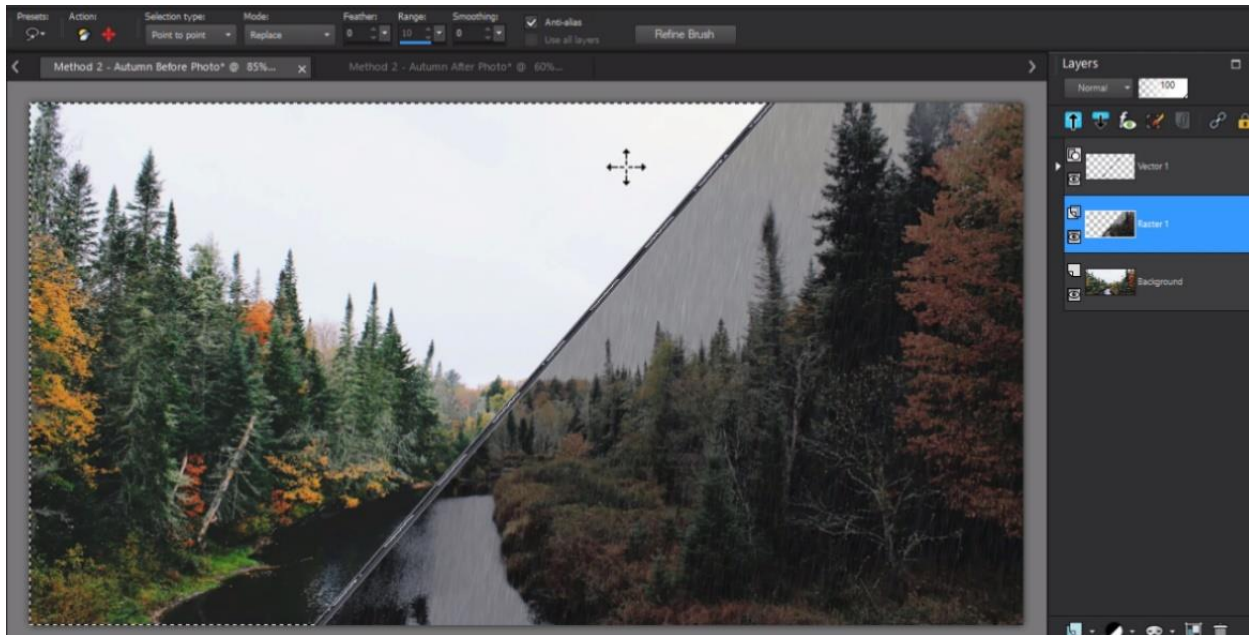
- After placing the divider, click on one of the selection tools.

The regular selection tool will work fine if your divider not on an angle, but if your divider IS on an angle, choose the **Freehand** selection tool and set the selection type to **Point to Point**.

- Draw a selection around the part the image on the left side of the divider, that will be the “before” side.



- In the **Layers** palette, click on the layer that has your after image to make sure it is the active layer, then press the **Delete** key. This will delete the selection area you created, allowing the before image to show through.



And now you have a cool split image to show off your image editing skills on social media!

