

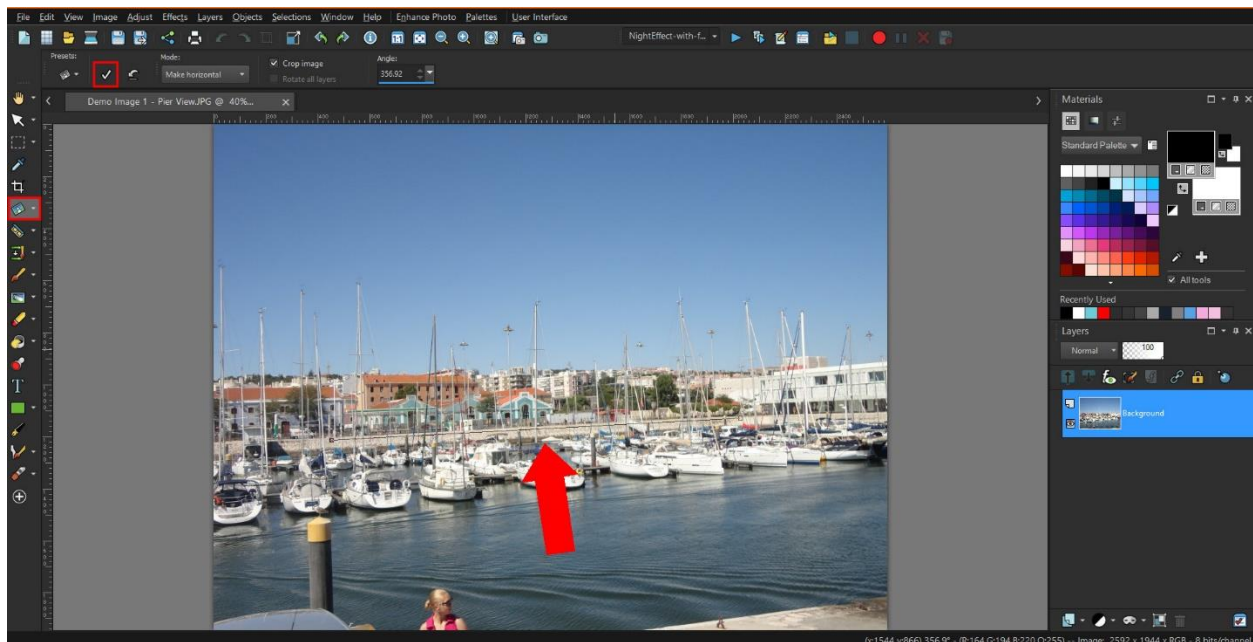
How to Fix Summer Photos with PaintShop Pro

In this tutorial, you'll learn 6 tips to fix some common issues with summer photos and make them look more professional.

Tip #1: Straighten your Photo

Before you start adjusting or adding effects, it's important to have a good base photo. Even if your photo is just slightly crooked, it is very noticeable and detracts from the overall image quality. Straightening a photo in PaintShop Pro is simple so there is no excuse for having crooked photos!

- Select the **Straighten** tool from the **Tools** toolbar on the left.
- A straightening bar with end handles will pop up on the image.
- Drag each handle of the straightening bar to align it with the part of the image that you want to straighten, in this case the boardwalk is a good reference to use.
- Click the **Apply** icon (check mark) to apply the changes.

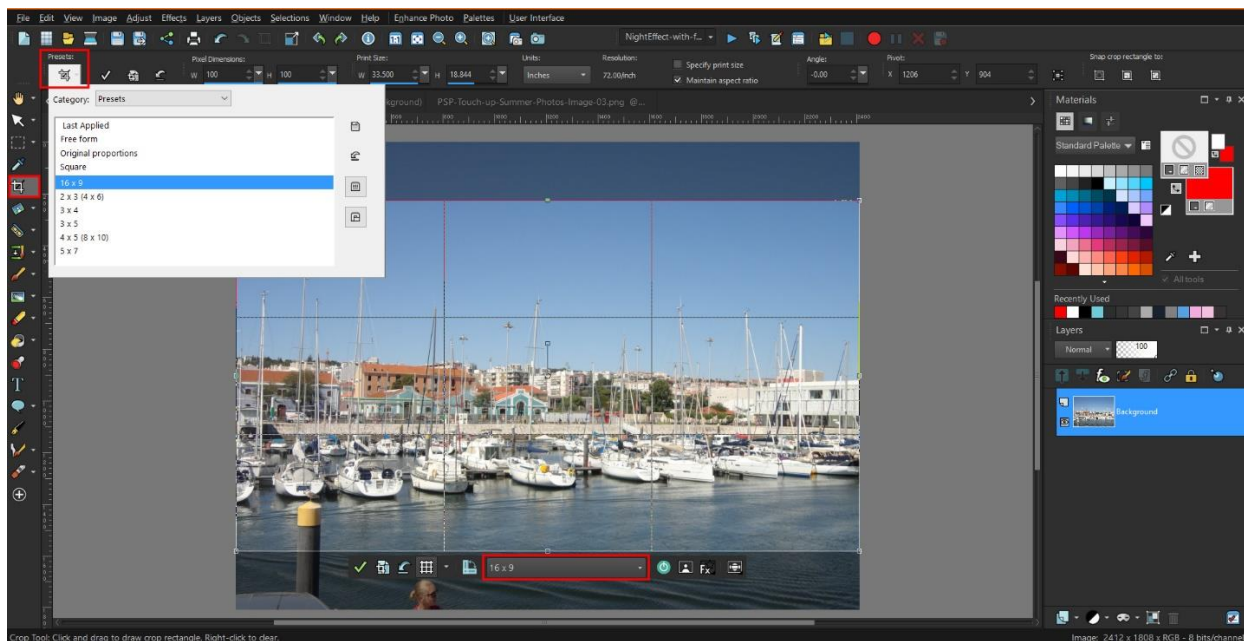


Tip #2: Crop your Photo

Another important step to get a good base photo is cropping. You can crop out any unwanted objects or people at the edges of your photo, but you can also use cropping to improve the overall image composition.

- Select the **Crop** tool from the **Tools** toolbar on the left and the crop rectangle will appear on the image.

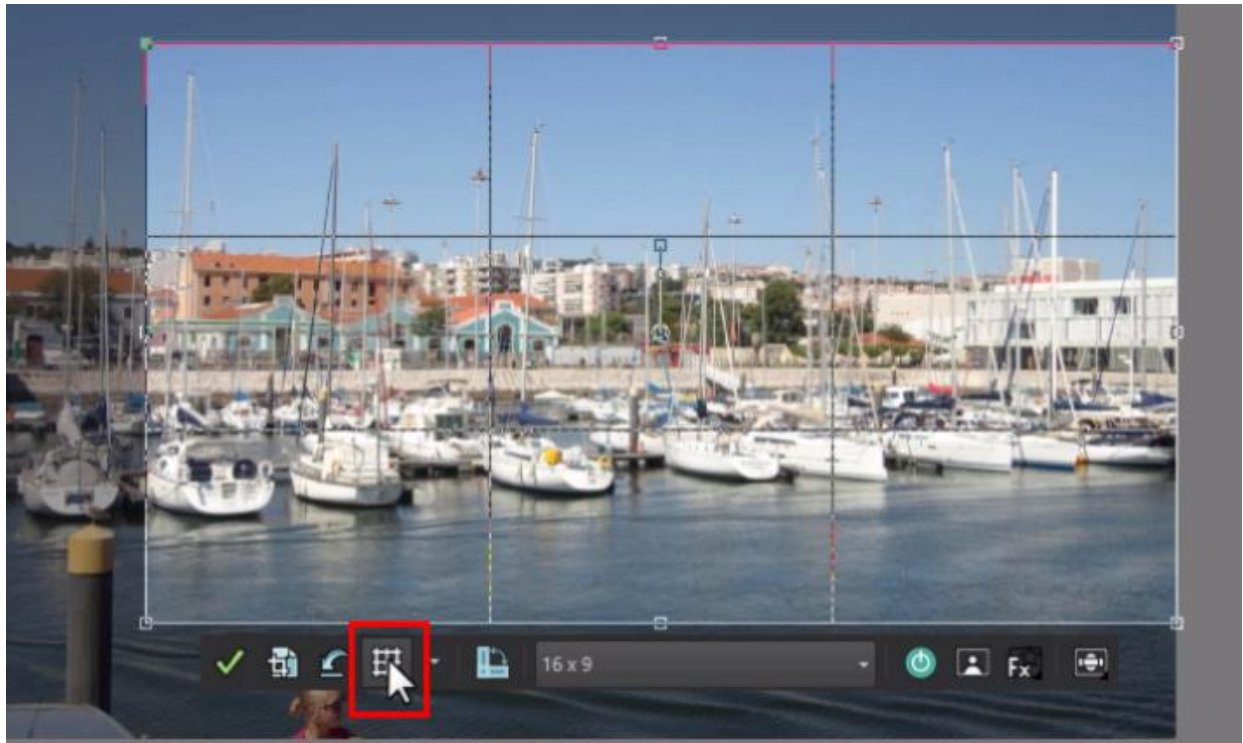
- If you want a standard photo size, select from the **Presets** dropdown list on the **Tool Options** palette or on the floating toolbar at the bottom of the crop rectangle.
- Drag one of the corner boxes to resize or use the handle in the center to reposition the crop rectangle. If you have selected one of the presets, the aspect ratio will be automatically maintained.
- You can also select **Free Form** and enter your own custom width and height dimensions on the **Tool Options** palette. If you want to maintain aspect ratio, you will need to check this option on the **Tool Options** palette.
- Click the green check mark to apply the crop to the current image or select **Crop as New Image** to preserve your original image.



To learn more about cropping, watch our full tutorial [How to Crop Photos](#).

You can also use a composition guide such as the **Rule of Thirds grid** to improve the image composition. You can turn the composition guide on or off using the button on the floating toolbar at the bottom of the crop rectangle.

As a general rule of composition, horizons should align with a horizontal grid line and important objects or subjects at one of the horizontal or vertical intersections.

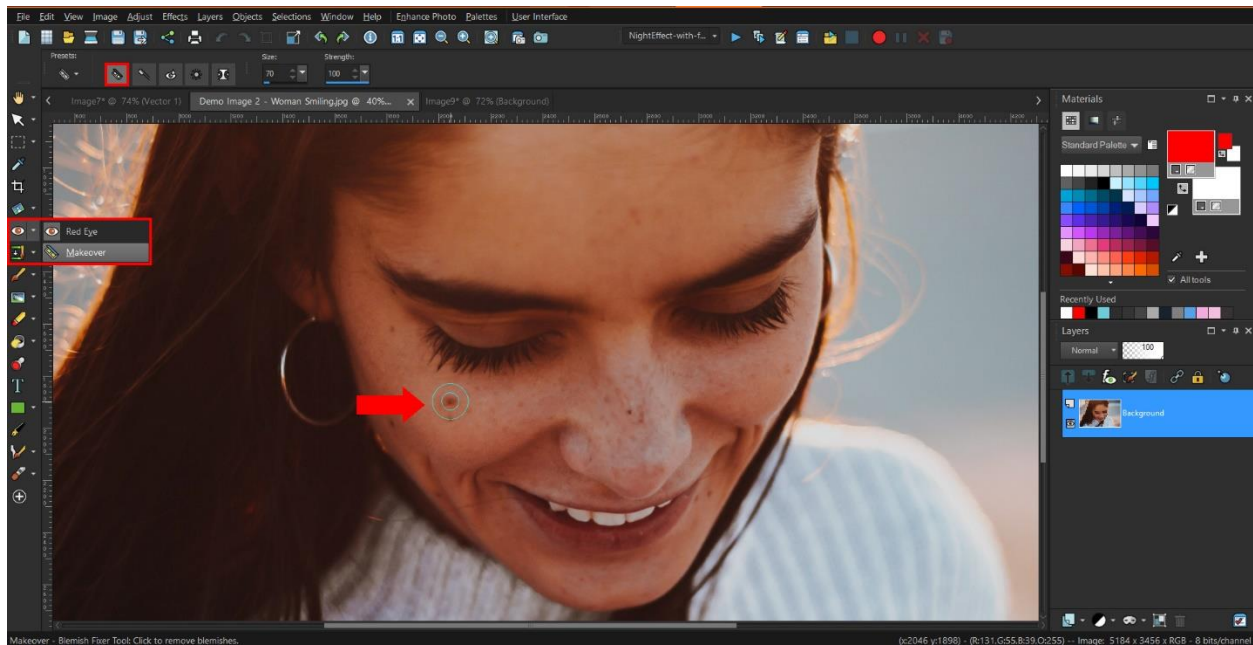


To learn more about composition, watch our [Photography Composition tutorial series](#).

Tip #3: Remove Imperfections and Unwanted Objects

With PaintShop Pro it's easy to make touch ups to your photos, whether it's removing a small blemish from a portrait or an unwanted object that you weren't able to crop out. The **Blemish Fixer** is a great tool for small touch ups.

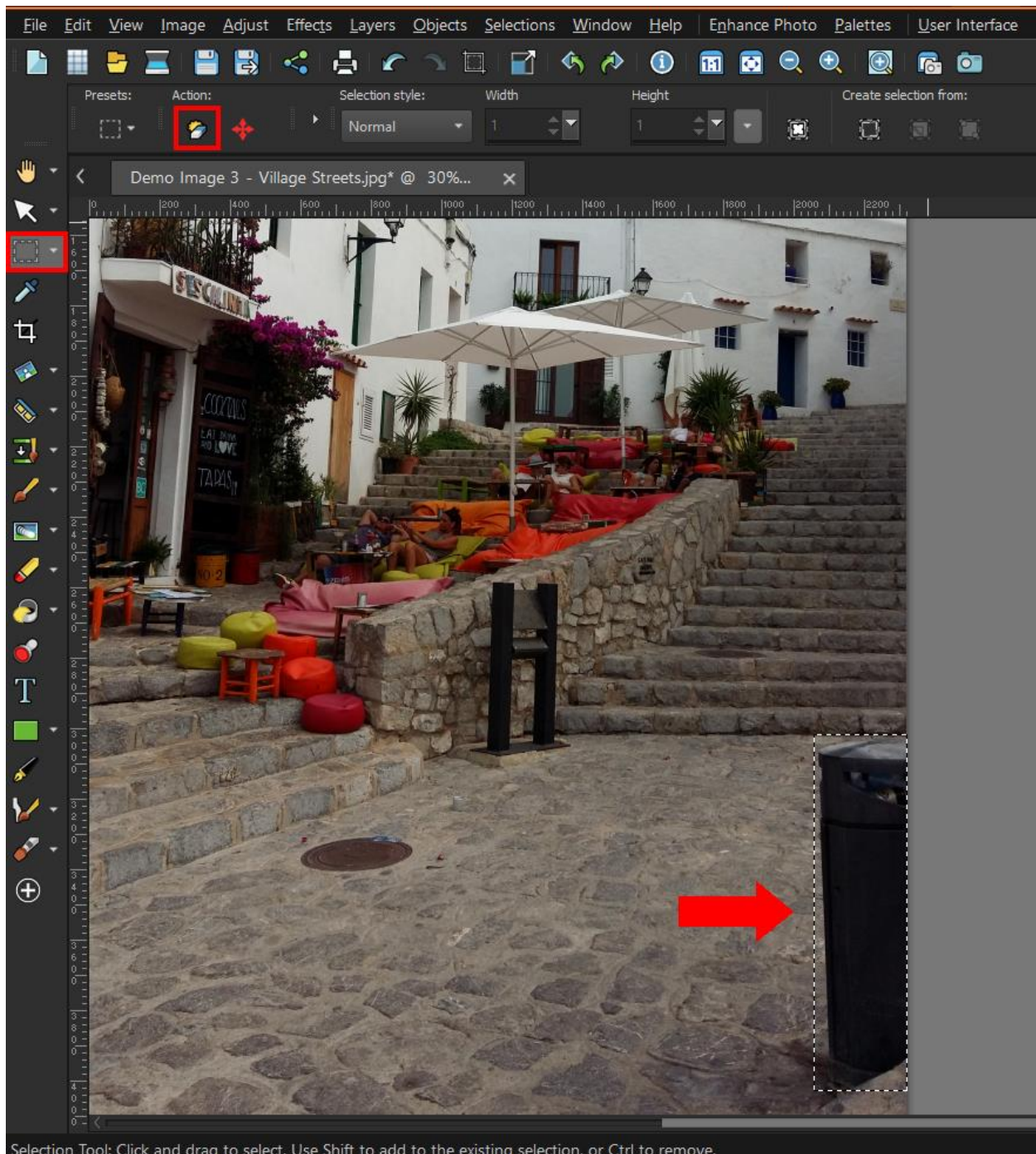
- Click the drop-down arrow next to the **Red Eye** icon and select **Makeover**.
- Select the **Blemish Fixer** in the **Tool Options** palette.
- Adjust the brush size so that the blemish fits just inside the inner circle. You can adjust the brush size in the **Size** box on the **Tool Options** palette, or by holding down the **Alt** key as you drag your mouse up or down.
- Hover over the blemish, click, and you'll see how the blemish has been covered.



To learn more about the **Blemish Remover** and other makeover tools, watch our full tutorial [Using the Makeover Tools](#).

For larger objects, use the **Magic Fill** tool. In this example we want to remove the trash bin from the bottom right corner of the photo.

- Click the **Selection** tool on the left toolbar, then click and drag to create a selection marquee around the object you want to remove.
- Then click on the **Magic Fill** icon on the **Tool Options** palette and you'll see the object has now been removed.



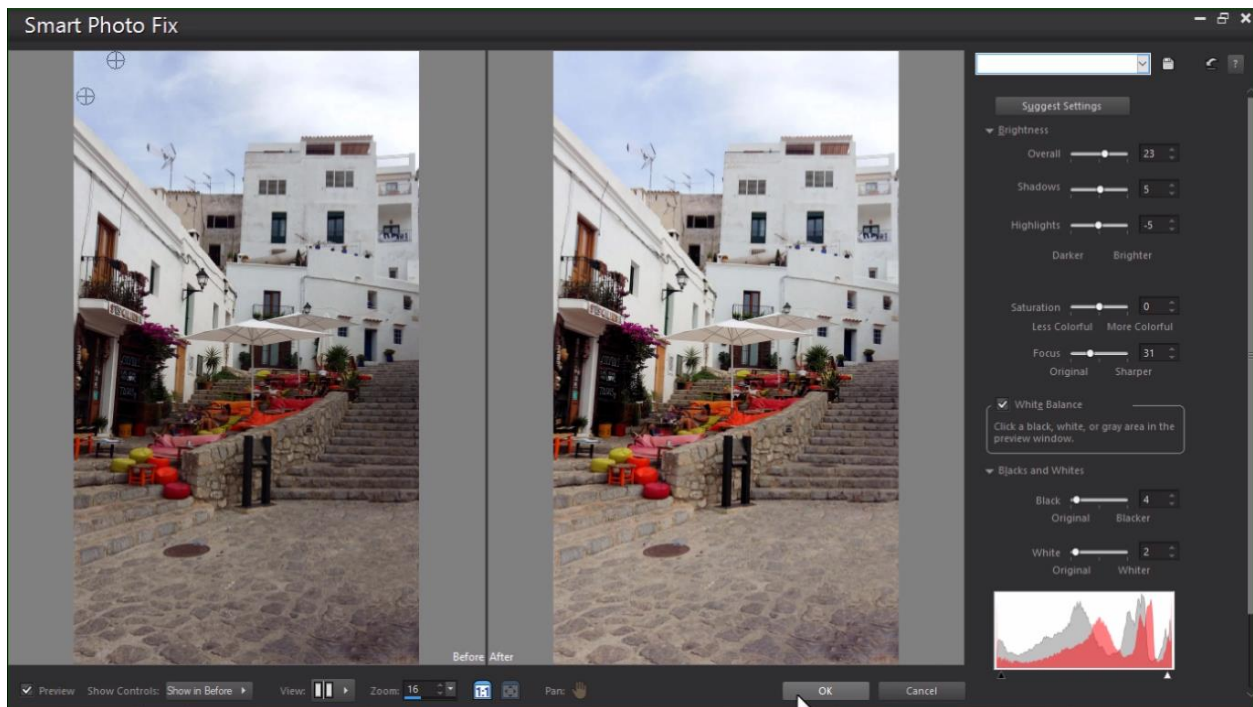


To learn more about using the selection tools, watch the full tutorial [Introduction to Selection Tools](#).

Tip #4 Adjust the Lighting

A common issue with summer photos is the lighting. Glare from the harsh summer sun can make your photos look washed out. Or if it's a gloomy day or you're taking photos in the shade or evening your photos can end up too dark. There are several ways to adjust the lighting in PaintShop Pro.

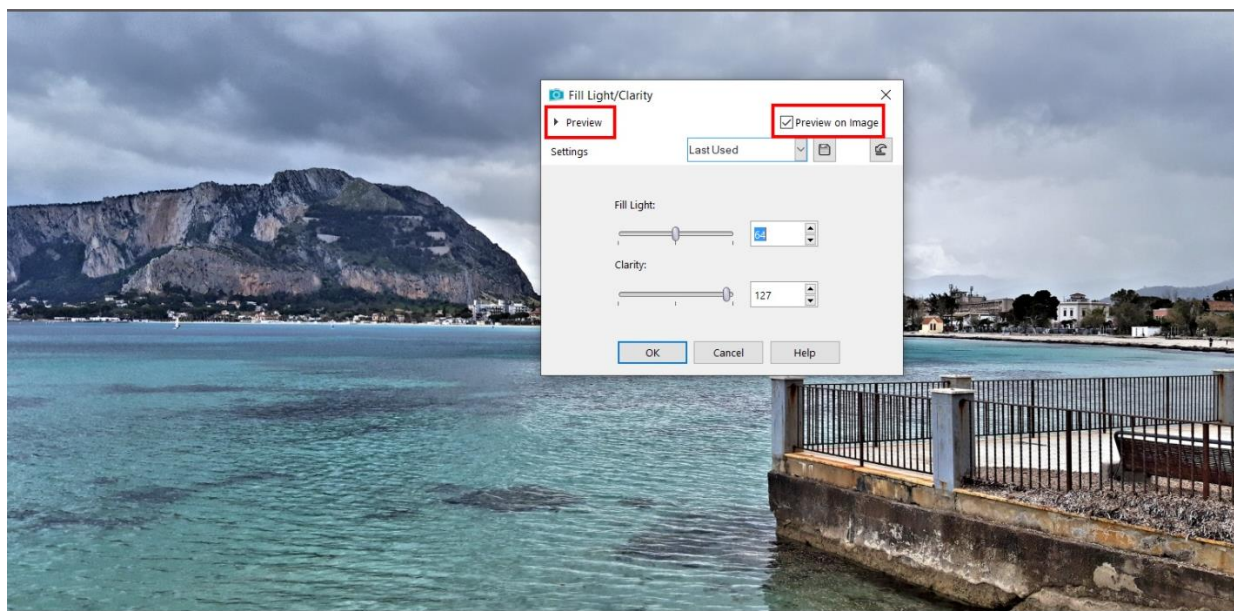
- Under the **Adjust** menu, use **One Step Photo Fix** or **Smart Photo Fix** to automatically adjust the brightness and saturation.



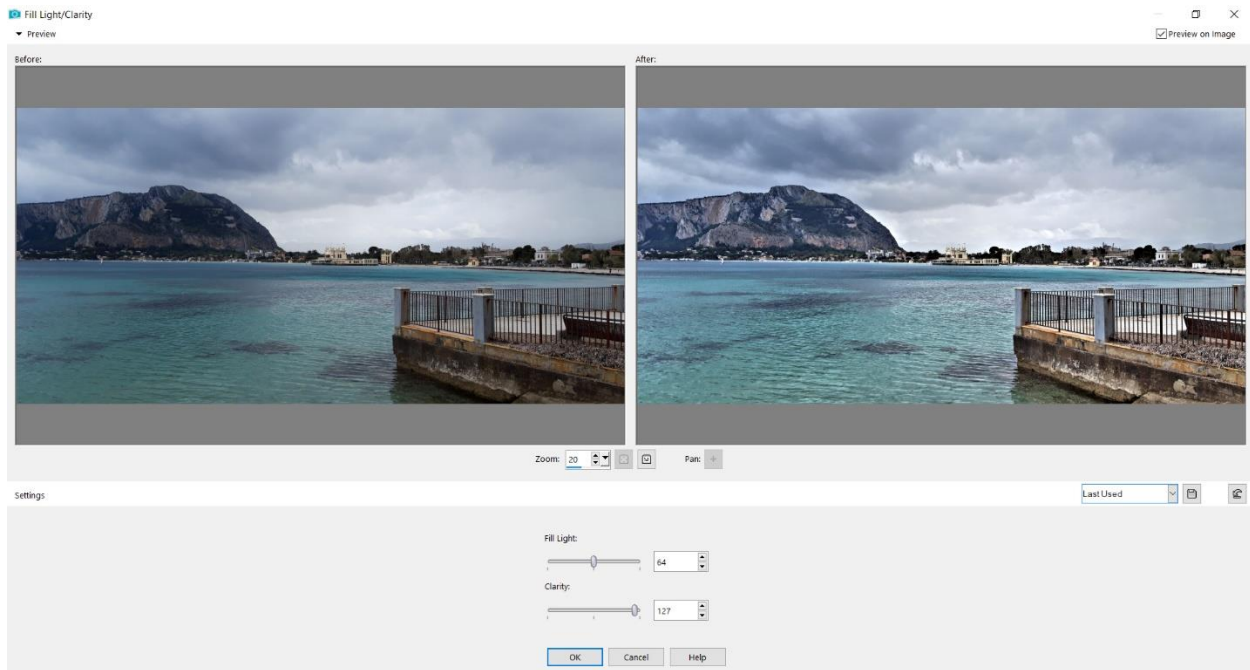
NOTE: *Smart Photo Fix* will by default apply the same automatic adjustments as *One Step Photo Fix*, but you can use the sliders to make manual adjustments as well.

For photos that are too dark:

- Click on **Adjust > Fill Flash** and adjust the settings to your liking.
- Or try **Adjust > Brightness and Contrast > Fill Light and Clarity** and make adjustments to make your photo brighter and crisper.

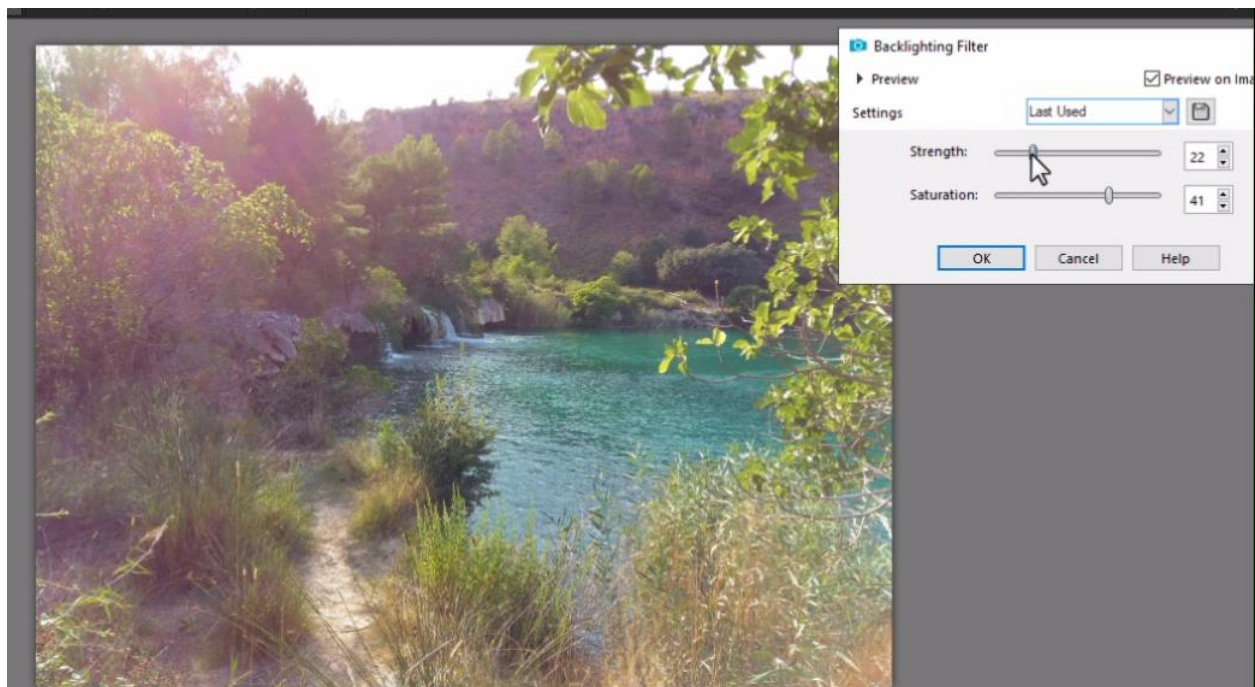


BONUS TIP: Make sure **Preview on Image** is checked to see what the adjustment will look like before applying. For a more detailed view, click on **Preview** in the top left to open a Before/After window, which you can maximize.



For photos that are too light or washed out:

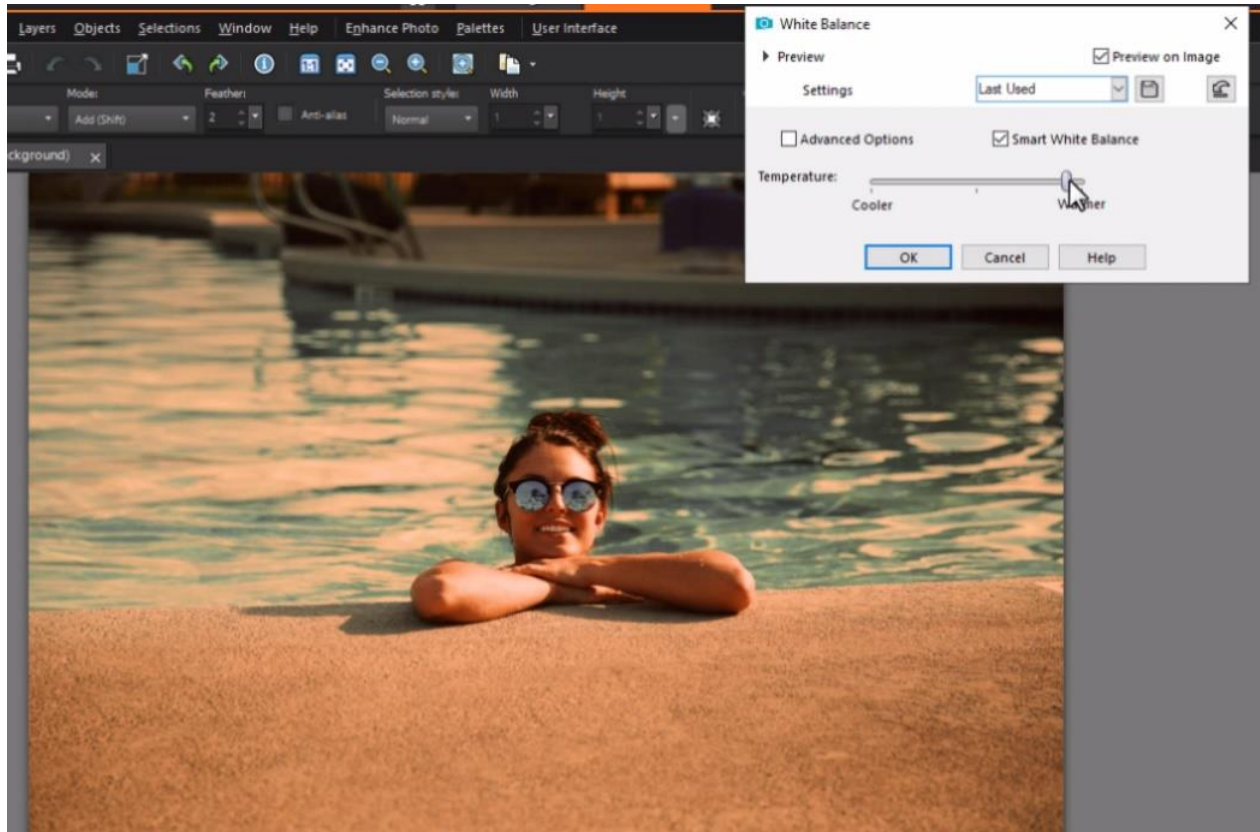
- Click on **Adjust > Backlighting** and play around with these settings until you're happy with the result.



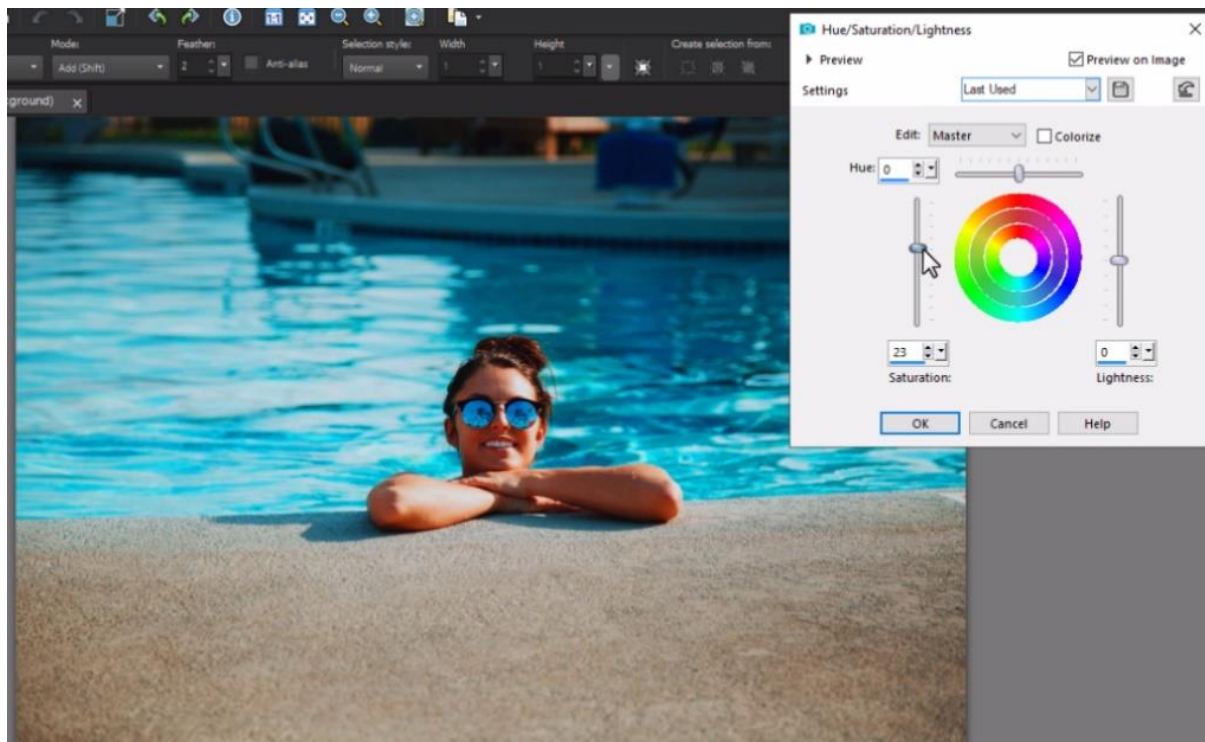
Tip #5 Adjust the Color

There are also lots of ways to adjust color in PaintShop Pro, here are the two most common and easy methods.

1. Click on **Adjust > White Balance** and adjust the temperature slider to your liking. In addition to fixing color issues, the white balance setting can be used to alter the mood of an image by making it warmer or cooler.



2. Click on **Adjust > Hue and Saturation > Hue/Saturation/Lightness**. Adjust the **Saturation** slider to make your photos more vibrant and colorful - just don't go too far!

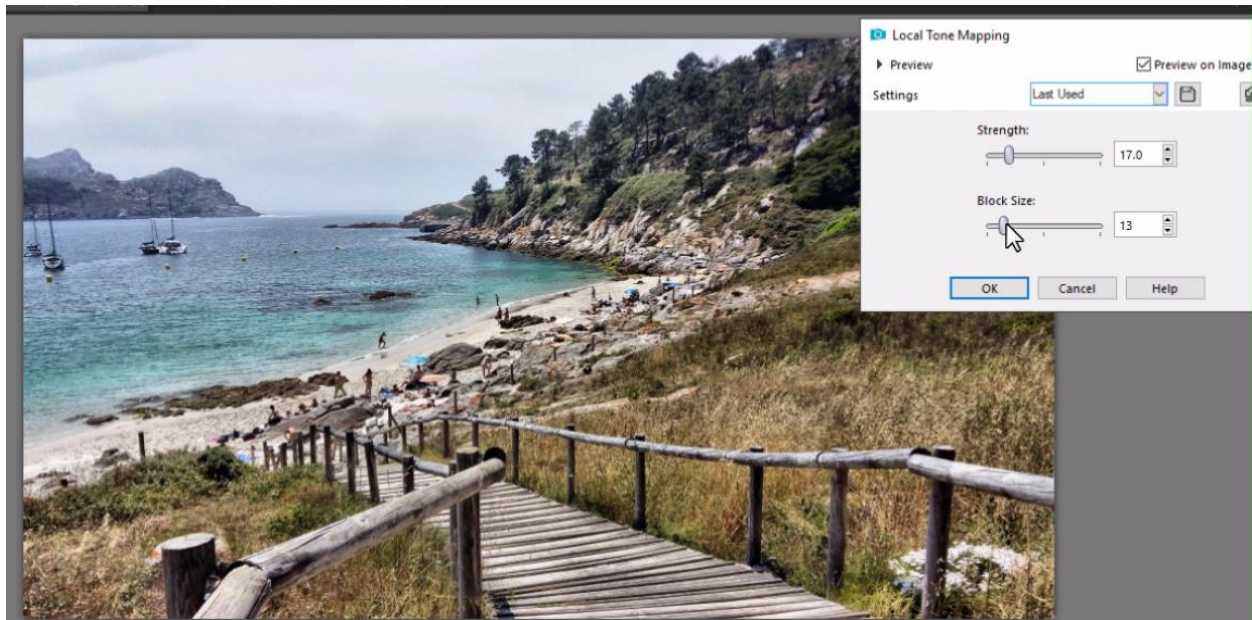


Tip #6 Adding Effects

PaintShop Pro has a wide variety of effects to enhance or even completely transform your images. Here are just a few of our favorites that we hope will inspire you to try out some other effects as well.

1. Local Tone Mapping:

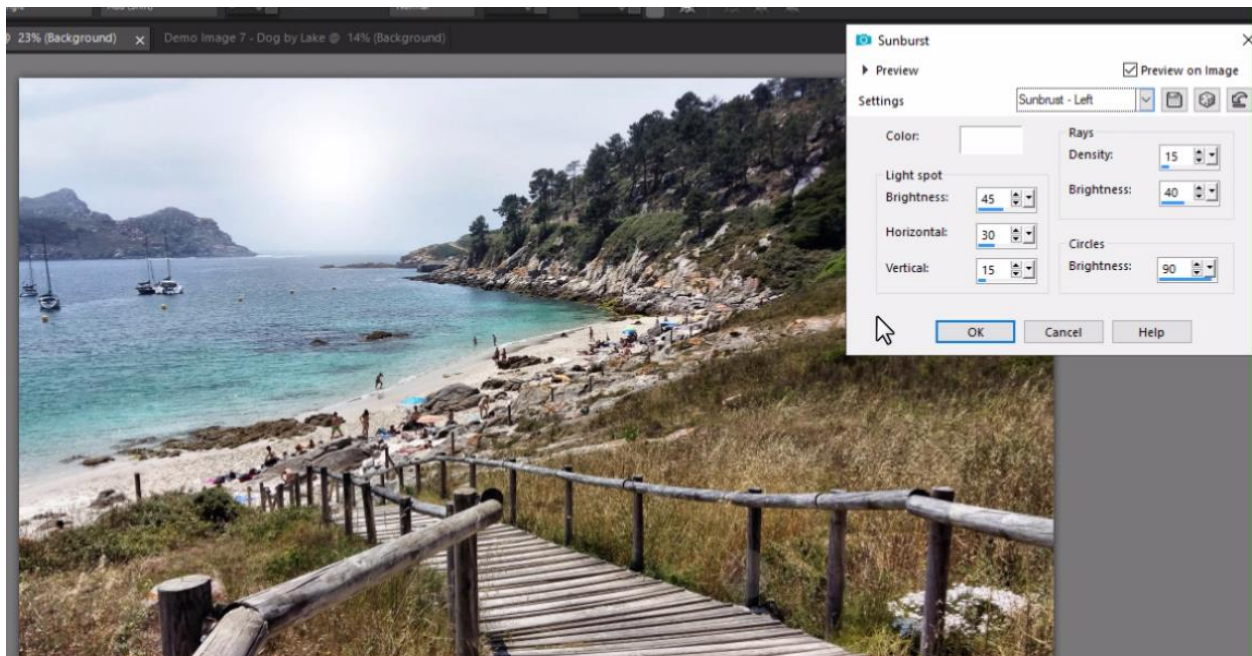
Go to **Adjust > Brightness and Contrast > Local Tone Mapping** to create an effect similar to HDR.



2. Effects

Under the **Effects** menu, you will find several different categories of filters and artistic effects. Try out a few to find your favorites and you can even use multiple effects on one image. All these effects have options and settings that you can manually adjust to your liking.

Go to **Effects > Illumination Effects > Sunburst** to add a lens flare and sunbeams or sunspots which is perfect for summer photos!

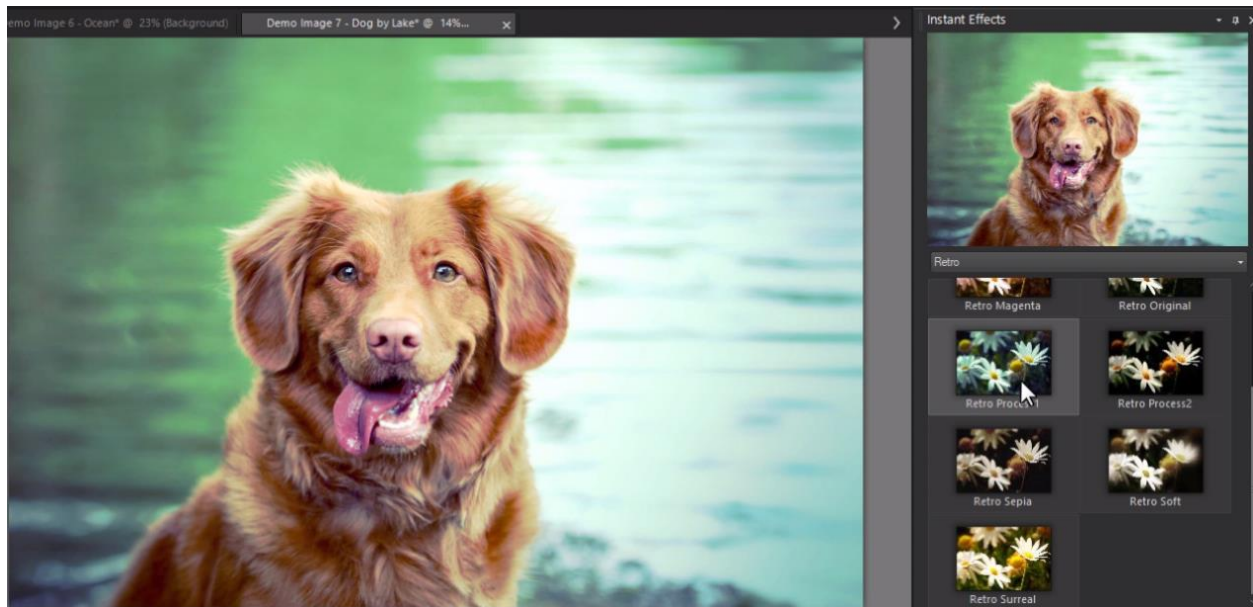


3. Instant Effects

Instant Effects are quick filters that you can apply with just one click. First, go to **View > Palettes** and ensure **Instant Effects** is checked. Once the **Instant Effects** palette is open in the interface, you can select a category and an effect. Click once on the effect to see the results in the **Preview** window; double-click on the effect to apply it to your photo. Use **Undo** (or **Ctrl + Z**) if you aren't happy with the results.

As with **Effects**, you can apply more than one **Instant Effect** to a photo.

In this example, we used **Retro Process 1** from the **Retro** category to give the image a soft green look to it.



These are just a few of the many ways you can fix summer photos before sharing them with your friends and family!