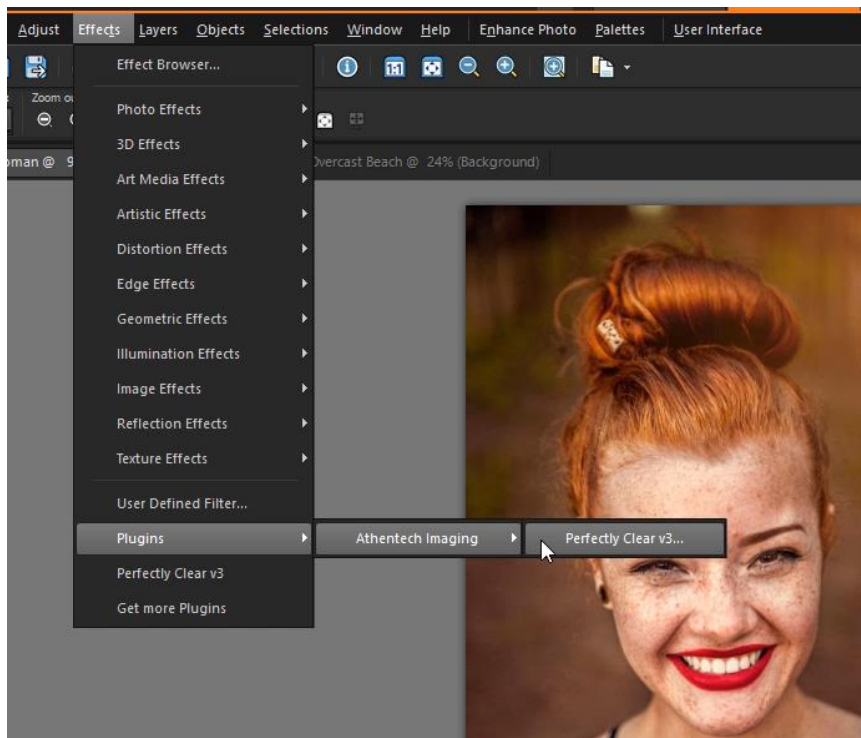


Using the Perfectly Clear Plugin

In this tutorial, you'll learn how to use the Perfectly Clear plugin for PaintShop Pro. Perfectly Clear is a photo editor that has dozens of amazing options to instantly fix your images. It works as a standalone editor and also as a plugin for PaintShop Pro. You can find Perfectly Clear in the **Get More** section of the welcome book inside PaintShop Pro.

Introduction to Perfectly Clear

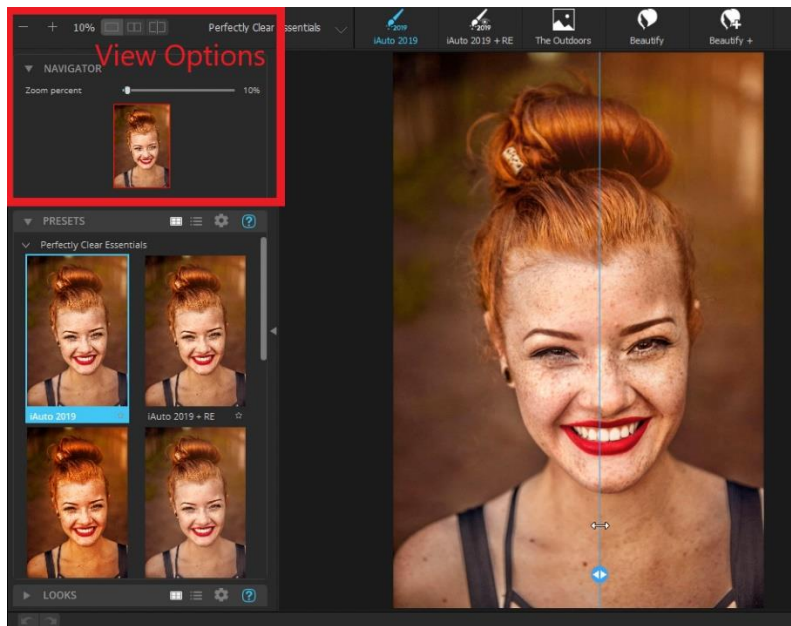
To launch Perfectly Clear, open your image under the **Edit** tab in PaintShop Pro. Go to **Effects > Plugins > Athentech Imaging > Perfectly Clear v3**.



This will bring up the Perfectly Clear interface. In the top left-hand corner, you can adjust the zoom level.

We also have three different view options:

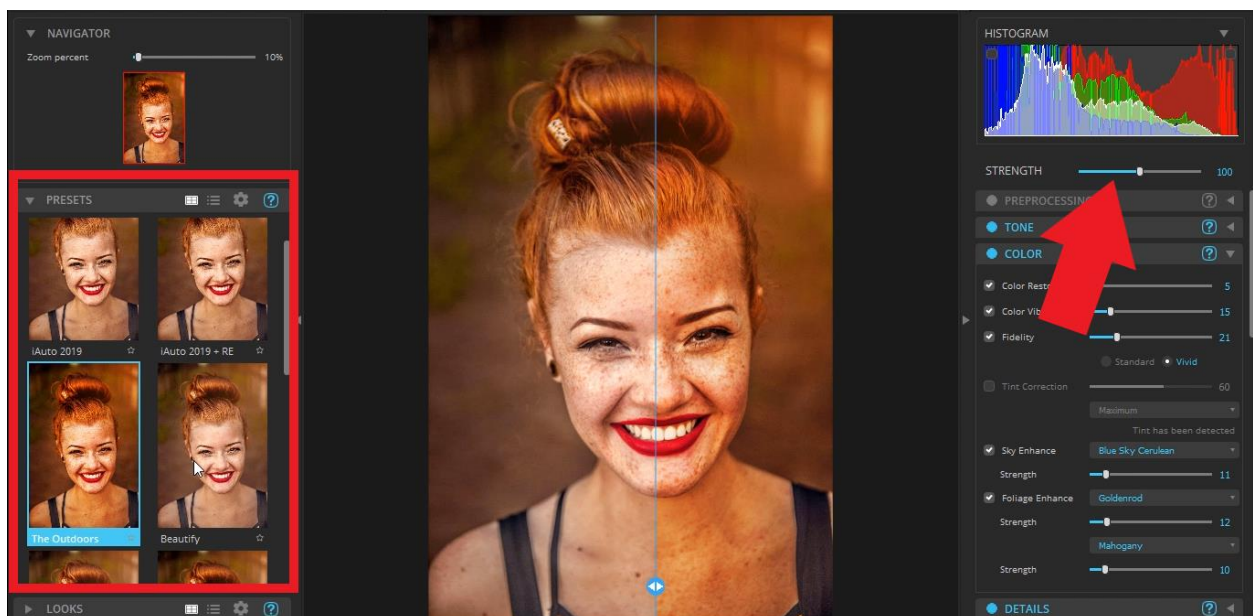
- Use **Single Image View** to see what the after image will look like.
- Use **Dual Image View** to see a side-by-side comparison of the before and after image.
- Use the **Single Image Split View** and drag the slider to the left or right to see the before and after split view of the image.



Presets and Looks

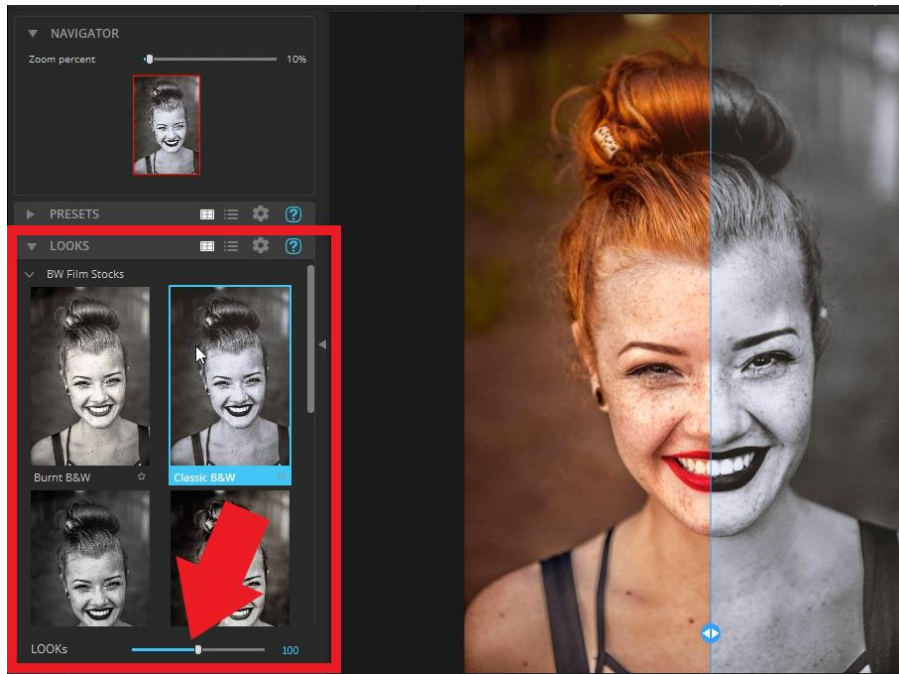
Perfectly Clear includes several categories of **Presets** that instantly transform your photos including Perfectly Clear Essentials, Perfect Lifestyle, and more.

- Simple click on a preset to preview and apply it to your image.
- Use any of the adjustment sliders on the right to fine-tune your selection.
- Adjust the intensity of the preset by playing with the **Strength** slider.



Perfectly Clear also includes four different **Looks** categories which include creative effects designed for emulating film stocks, black and white photography, and creative color grading.

To refine the intensity of the **Look** applied, you can adjust the **Strength** slider directly below the **Looks** menu.

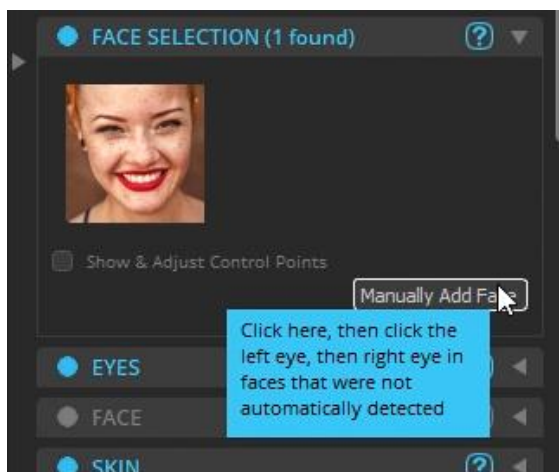


Face Selection

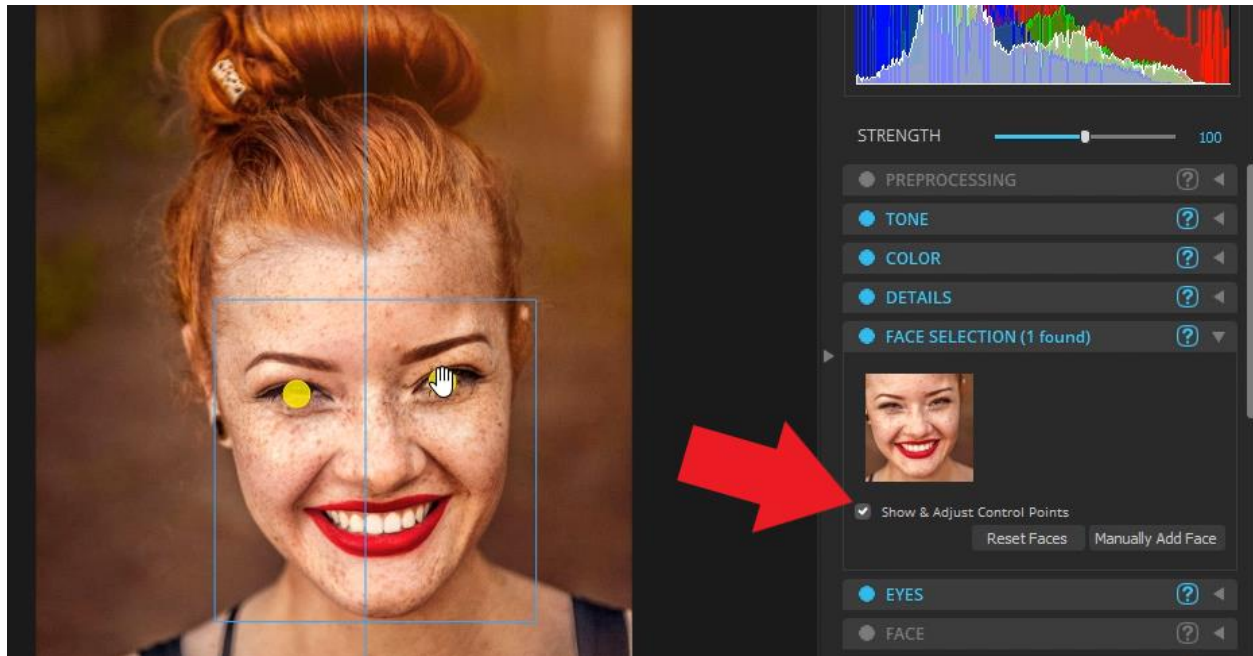
If you're working with an image with people and you'd like to make adjustments to the **Eyes, Face, Skin and Makeup Groups**, you'll need to make sure that the faces have been identified in your photos.

If a face isn't automatically identified (for example in a group shot) and the face isn't showing up in the **Face Selection** area, then the adjustments won't be applied.

However, you can add a face manually by clicking **Manually add face**.



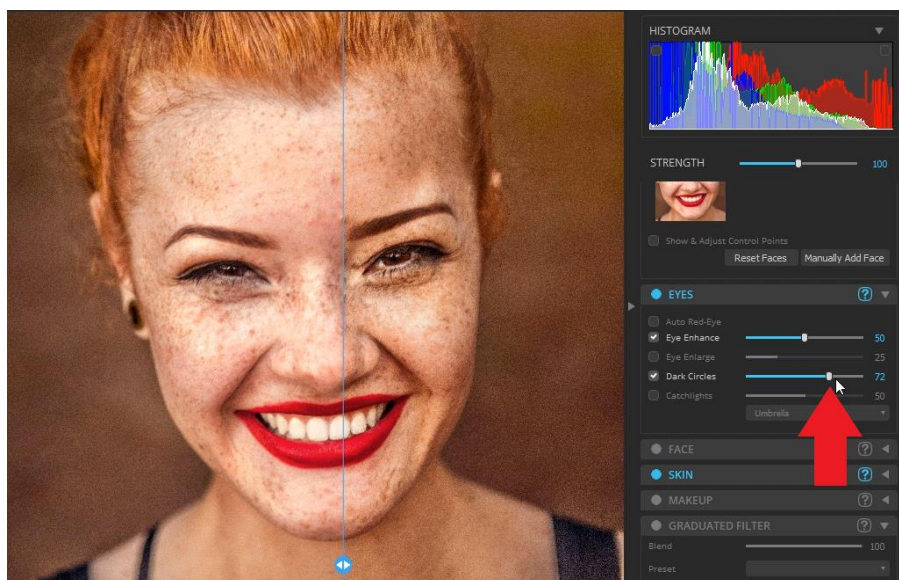
You can also adjust the control points of any face by clicking **Show & Adjust Control** points and then making sure the yellow dots are positioned correctly on top of the left and right eyes.



Example 1: Using Perfectly Clear for Portraits

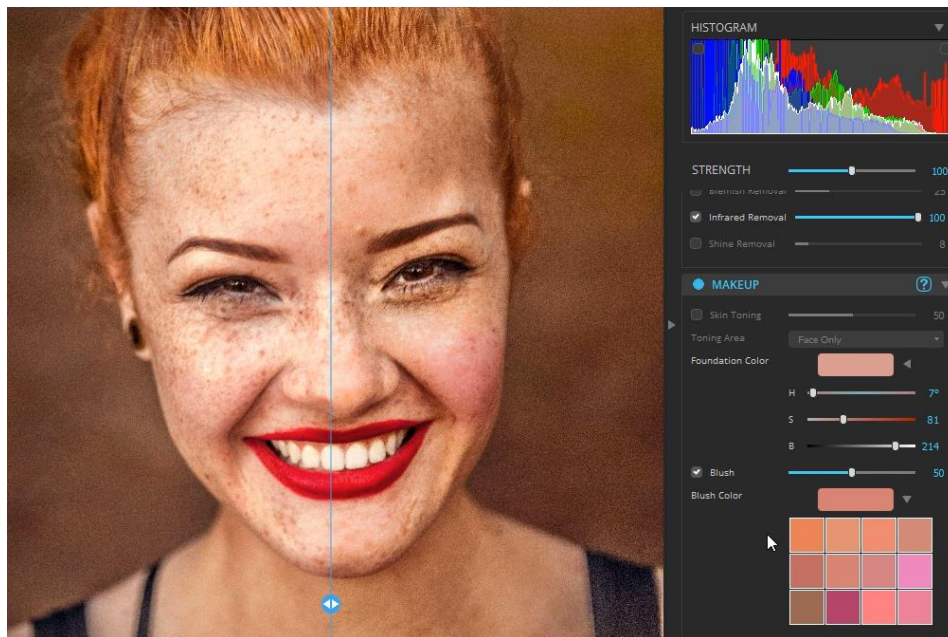
Here are some examples of how we used Perfectly Clear to enhance this portrait photo.

- Start with a preset, such as the default **iAuto2019** preset.
- In the **Eyes** section, we increased the **Dark Circles** slider to reduce the appearance of the dark circles under this woman's eyes even more.

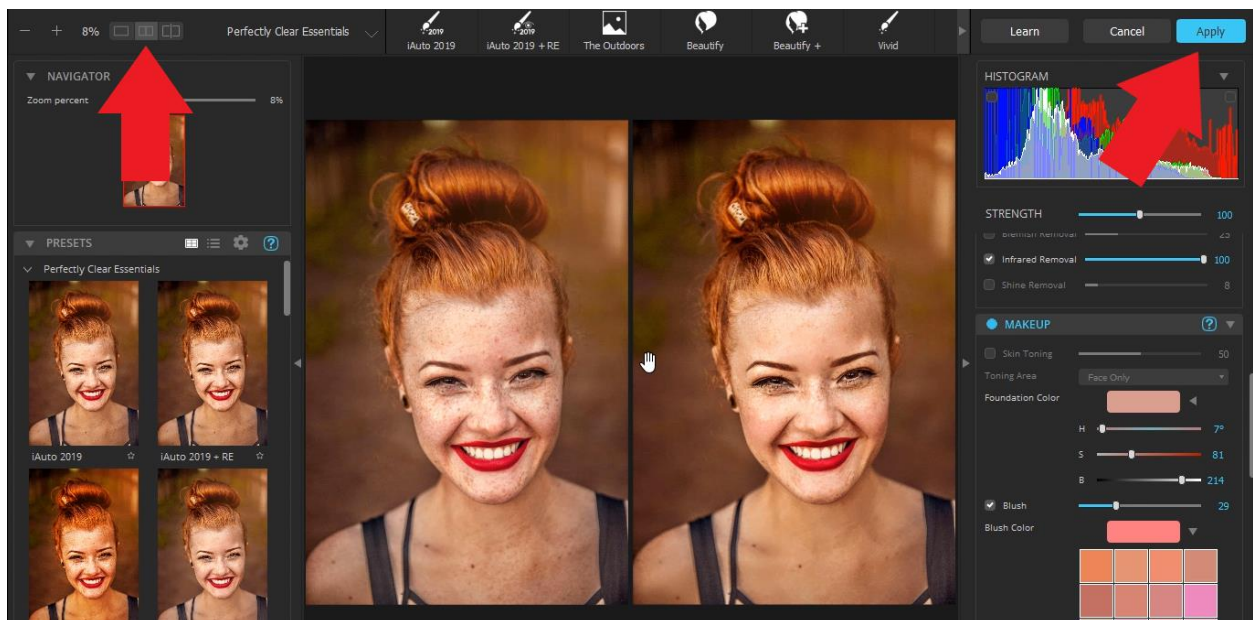


In the **Skin** section, we used the **Perfectly Smooth** slider to soften the appearance of her freckles and skin tone just a bit.

In the **Makeup** section, we used the **Blush** option to add a bit of blush to her cheeks.



At any time, switch to the **Dual Image** view to see how the edits have changed your portrait photo.



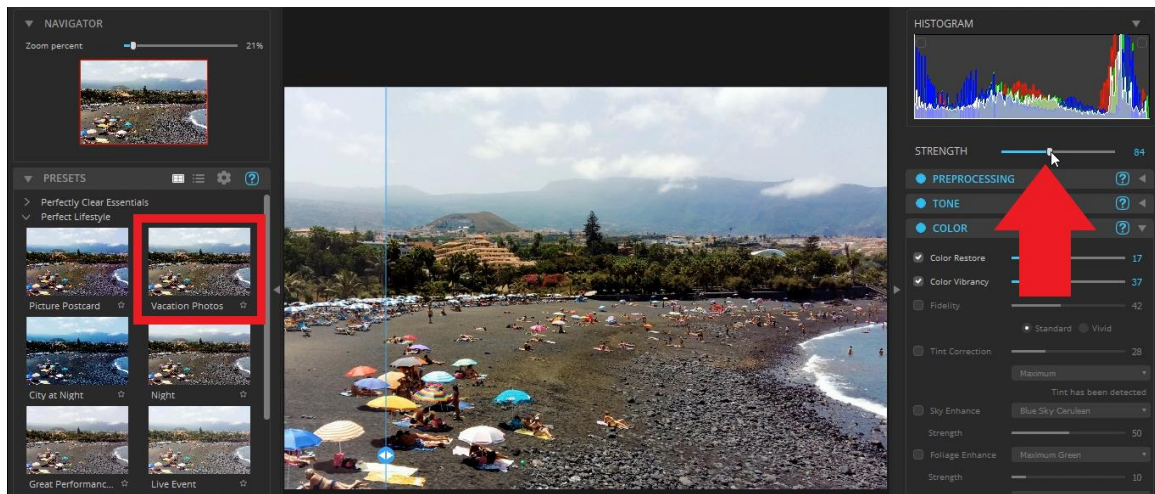
Once you are happy with your adjustments, simply click **Apply** to bring the edited image back into PaintShop Pro where you can make any further edits.

Example 2: Using Perfectly Clear for Landscape Photos

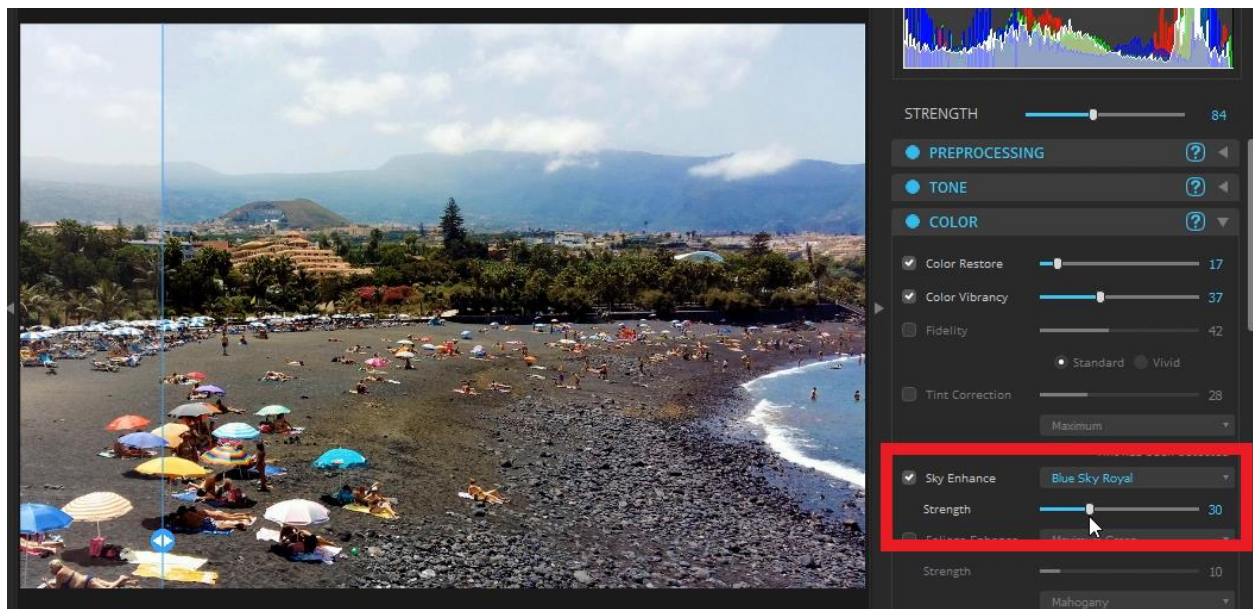
In this second example, we'll transform a beach shot taken on an overcast day into a more vibrant and colorful photo we could use as a postcard. We'll use the Single Image Split View to see the before and after versions side-by-side.



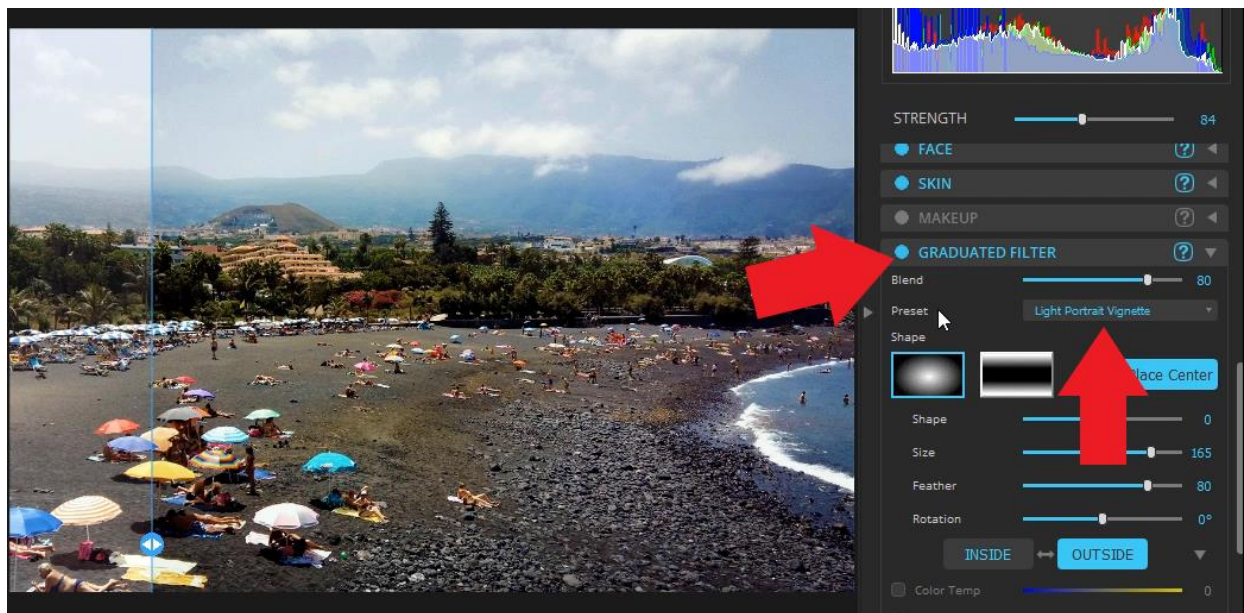
- Open up the **Perfect Lifestyle** preset category and select **Vacation Photos**.
- Adjust the **Strength** slider to around 85.



- Go to the **Color** category and enable **Sky Enhance**.
- Select **Blue Sky Royal** and adjust the **Strength** slider to around 30.



- Enable **Graduated Filter** and add a **Light Portrait Vignette**.
- Adjust the **Blend** slider to around 80.



Drag the before and after slider from left to right to preview the changes.

You can see how much more vibrant the image is by applying these presets and we've turned a dull beach photo into a colorful vibrant photo that could be used as a postcard.



The Perfectly Clear plugin is a great way to automatically correct and fix your images with just a few clicks to create stunning images every time!