

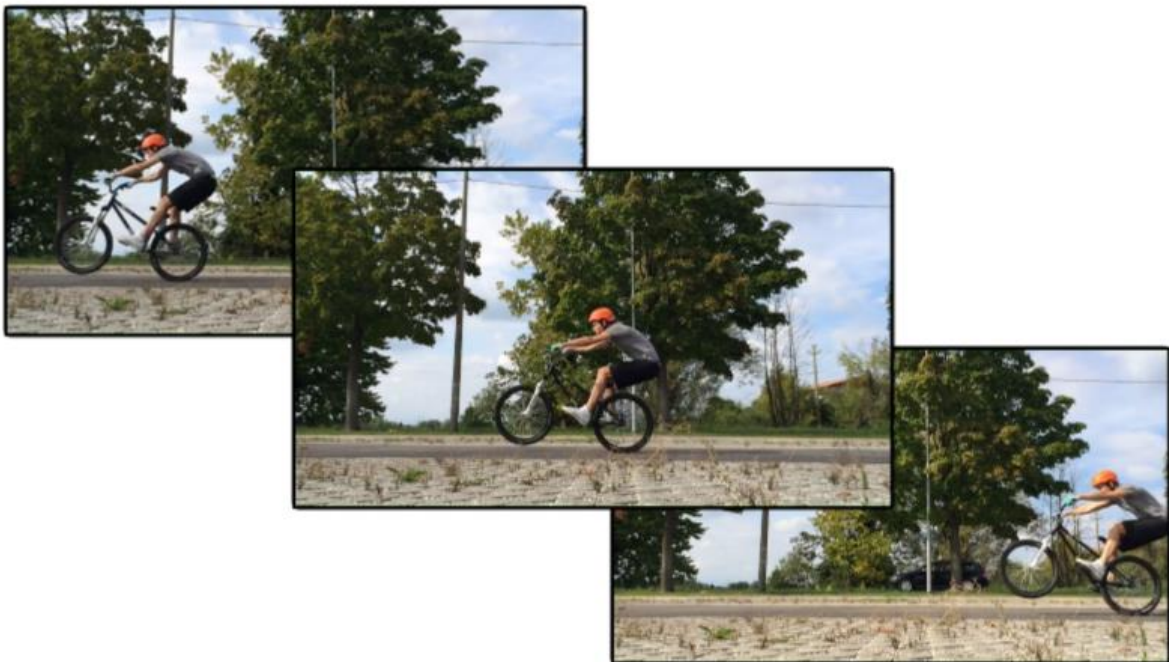
How to Blend Photos in PaintShop Pro

In this tutorial, you'll learn how to blend photos together using PaintShop Pro. Photo blending allows you to combine the best parts of multiple shots taken in the same location into one photo.

You can also use this technique to remove certain elements of a photograph, such as people or vehicles, to get a perfect shot of a scenic view or landscape.

You will learn how to:

- Import multiple photos into the Photo Blend Wizard.
- Use the Photo Blend basic tools: Brush In and Brush Out.
- Process so that the images merge into one.

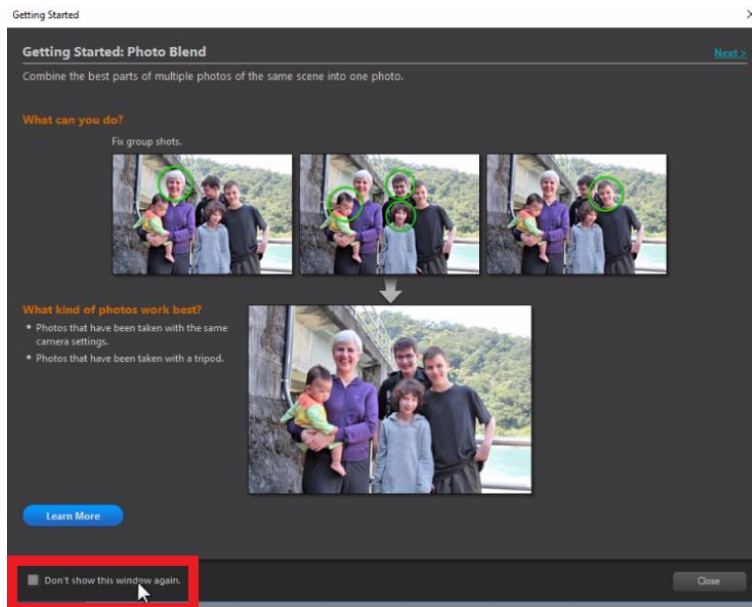


When using the **Photo Blend** tool, it is important that the images you will be blending were shot either using a tripod or in quick succession, so that the backgrounds behind your subjects are consistent.

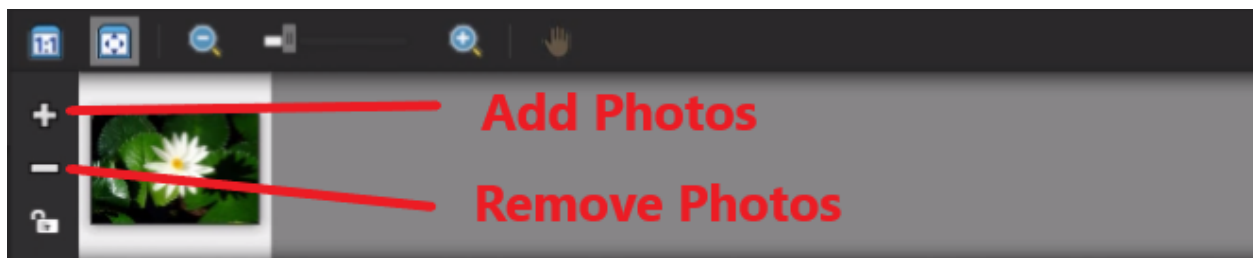
- Open PaintShop Pro, click on the **File** menu and choose **Photo Blend**.

If this is the first time you have opened the Photo Blend wizard, the Learning Center window will pop up to provide some information on this feature and how it works.

To prevent this window from popping up again in future, just check the box beside *Don't show this window again* on the bottom left of the dialogue box. Then click **Close**.



When the Photo Blend window opens, click on the **Minus** icon to remove the default standard image.



Click the **Plus** icon to add your own images that you want to blend together:

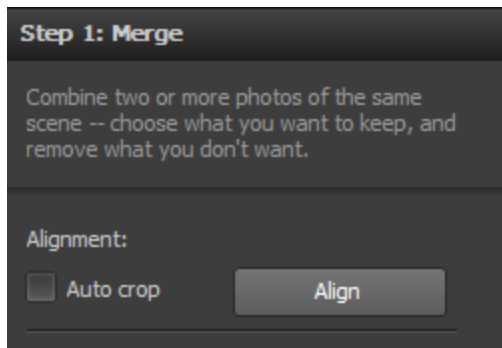
- Browse to where you have your photos located on your computer.
- Select the images you want to work with and press **Open**.

These photos will then be loaded into the tray at the bottom of the screen.

In this example, I have three different shots of a boy riding his bicycle. And I want to make a cool photo where you can see the progression of him biking from right to left.



These photos were taken with a tripod so they are all aligned quite well, but if you took your photos with a handheld camera you can click on the **Align** icon to help align the images perfectly.



Now we are ready to brush in our subjects. Click on the first photo in the tray and then select **Brush In**.



Brush over the subject you wish to keep in the shot.



The brushing in doesn't have to be perfect since the background is the same in each photo, so it won't matter if you brush in parts of the sky or tree as well. Repeat this process with the next two photos.

TIP: You can increase the brush size to cover a larger area or reduce it to make detailed adjustments.



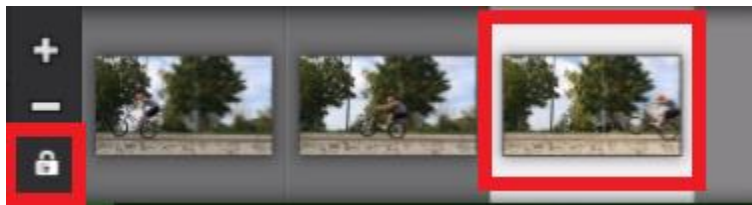
You will notice that any areas you have brushed in have automatically been brushed out of the other photos. In cases where the subjects of one shot overlap another, like in this example here with the bicycle wheel, you will need to reduce the brush size to be more precise.

You can also use the **Eraser** tool to clean up around the edge of the brushed-in area so it doesn't include any excess background around the wheel.



Click on **Brush Out** to mark areas you want to remove from the final image, such as the car in Image 3.

If you prefer to use one image as the background image, click on the **Lock** icon in the tray and this will lock it in so that this image is used as the background to include all the blended components from the other images.



When you have completed the three images, click the **Process** button and the photos will be blended.

Click **Save and Close** to save the blended photo on your computer or click **Edit** to open it in PaintShop Pro for further editing.



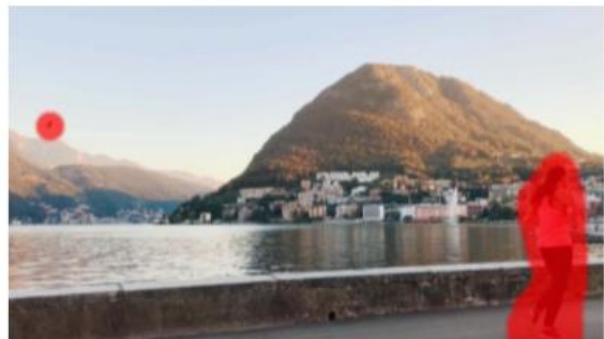
Removing Objects and People from Landscape Shots

I'd like to also show you another great use for this tool. I've got two photos taken of this scenic view but there are people blocking the view from different sides in each shot taken.

I want to combine these photos together to get rid of all the people blocking the view.



- Click on the thumbnail in the tray and use the **Brush Out** tool to erase the subjects you want to remove from the shot as we did previously.
- Repeat this process for the second photo in the tray.



- Click on **Process** to blend the photos together. And now you can see that the scenic view is complete without anyone blocking it!

