

Adding Brushes in PaintShop Pro

The simple instructions below will show you how to install and use the brushes you have purchased. You can also watch our video tutorial [Using the Brush Tools](#) to see just how easy it is to work with brushes and how they can enhance your photo projects.

After downloading your brush files, it's helpful to get into the habit of storing them in the proper location. This way, they will display in the Brush Tip drop-list. Each brush has two files: a .PspScript file and a .PspBrush file. Browse to the following location to paste **both** of these files in your Brushes folder:

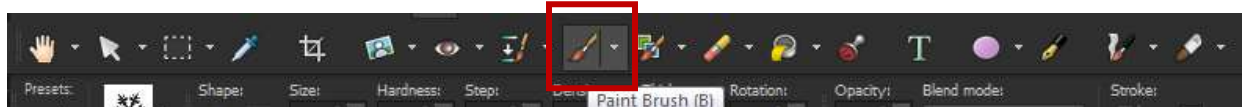
C:\Users\YOURNAME\Documents\Corel PaintShop Pro\19.0\Brushes

*If you are using an earlier version of PaintShop Pro, replace **19.0** in the filepath above with your version.*

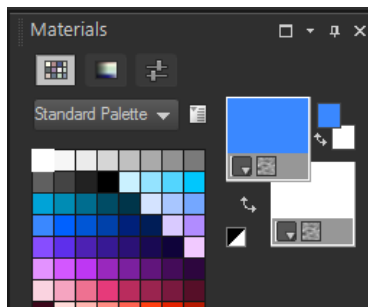
To use a brush:

In the **Edit** workspace,

1. On the **Tools** toolbar, choose a brush tool.



2. On the **Materials** palette, choose the foreground and background colors and materials.



3. On the **Tool Options** palette, choose a tool from the Presets drop-list.
4. Choose a preset brush tip from the brush tip drop-list.
5. Specify the brush options, such as shape, size, opacity, hardness, thickness, and rotation.

