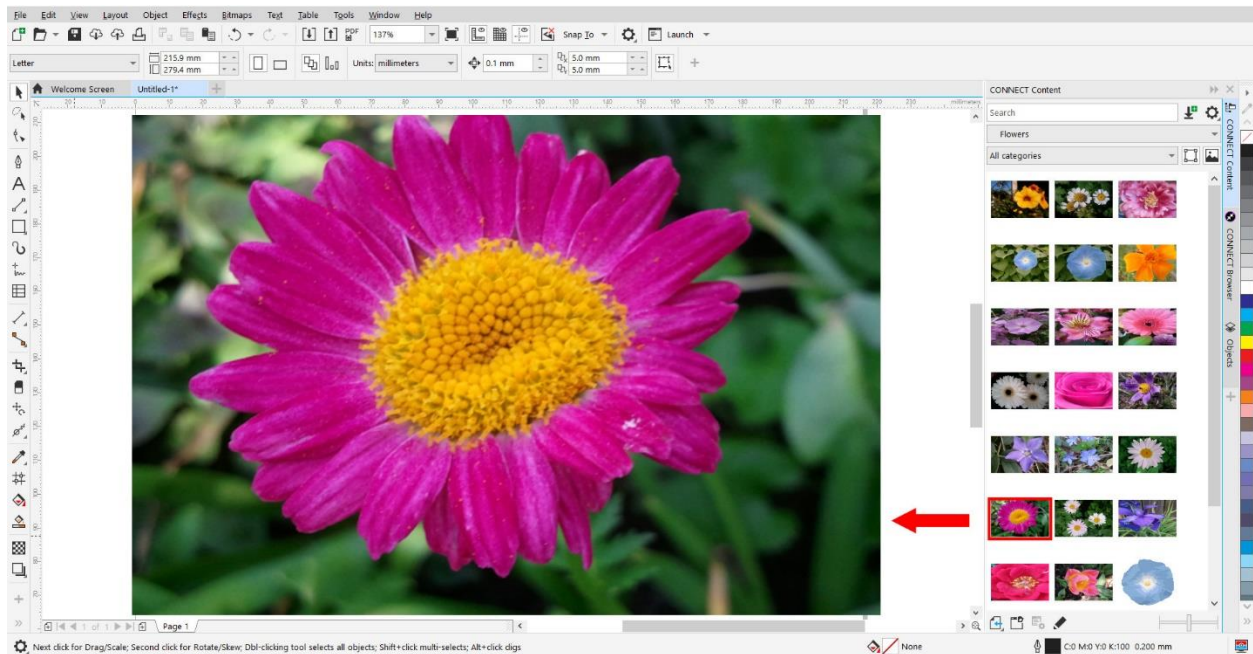


How to Make Clipart from a Photo

In this tutorial, we'll cover how to make clipart from a photo using the **PowerTRACE** feature in CorelDRAW.

To begin, open the photo that you want to work with. In this example, we have a collection of flower photos in the **CONNECT Content** docker (**Window > Dockers > CONNECT Content**) that we will be using, and we have dragged one of them into the document.

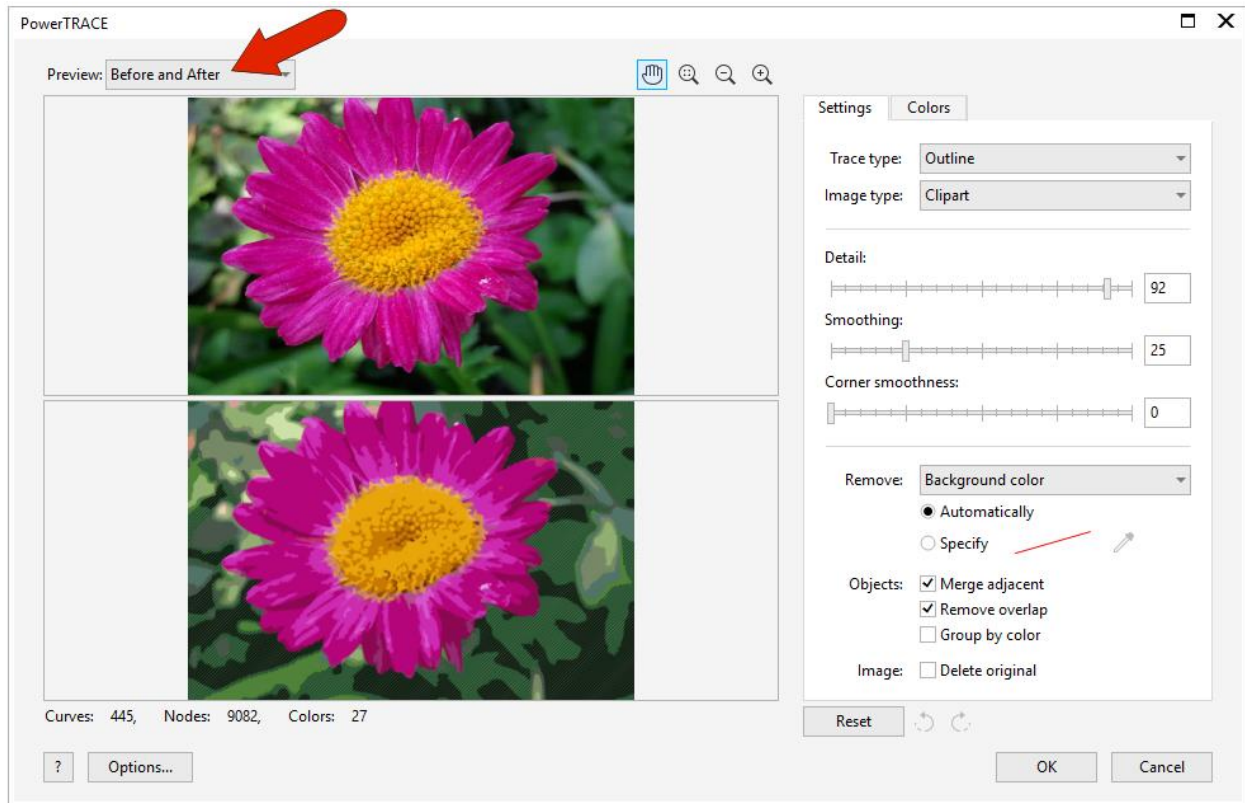


Converting Raster Images to Vector Images

A photo (usually JPG or PNG file format) is a raster image and therefore not very useful as clipart, since it can't be enlarged without losing sharpness and quality. The photo must be converted to a vector image using **PowerTRACE**.

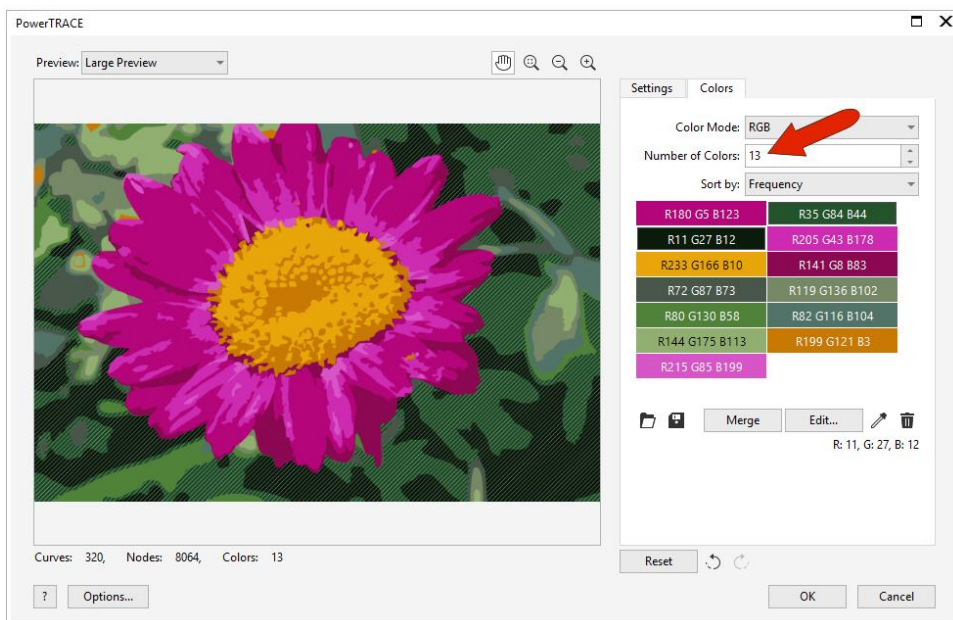
Select the photo with the **Pick** tool and go to **Bitmaps > Outline Trace > Clipart**. This opens the **PowerTRACE** window, displaying the default Before and After views.

NOTE: Under the **Bitmaps > Outline Trace** menu you will see that there are other tracing methods, which will be discussed later in this tutorial.

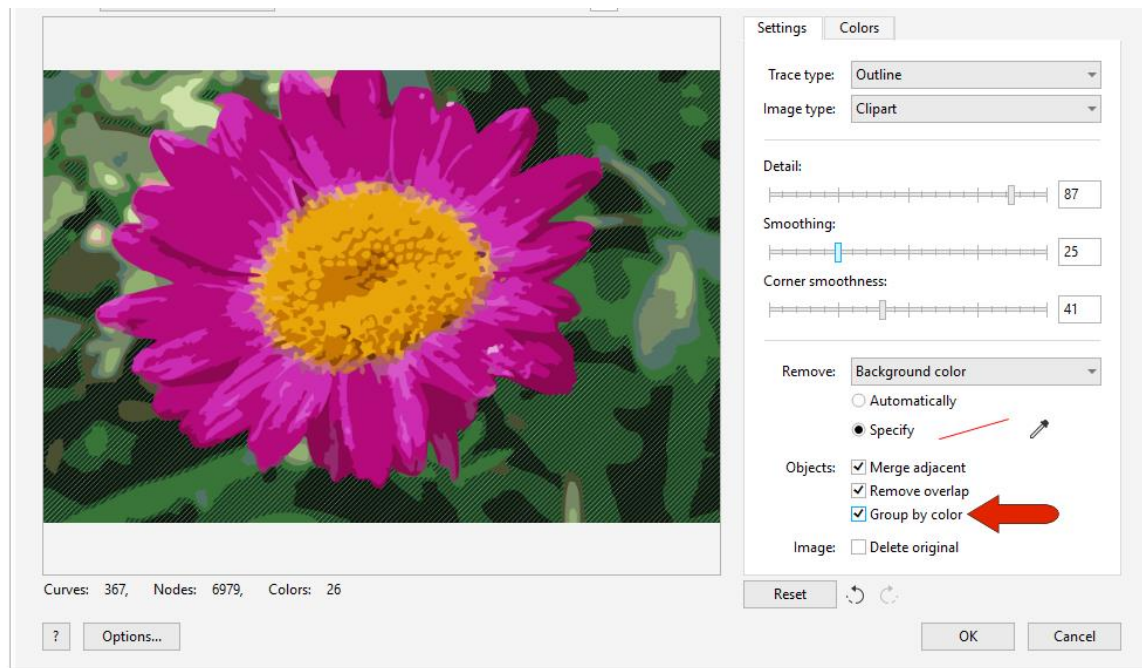


You can switch the **Preview** mode to **Large Preview** to see more detail, or **Wireframe Overlay** to see the actual vector curves and fill colors that will be created. In **Wireframe Overlay** mode, you can use the slider to adjust the translucency of the curves.

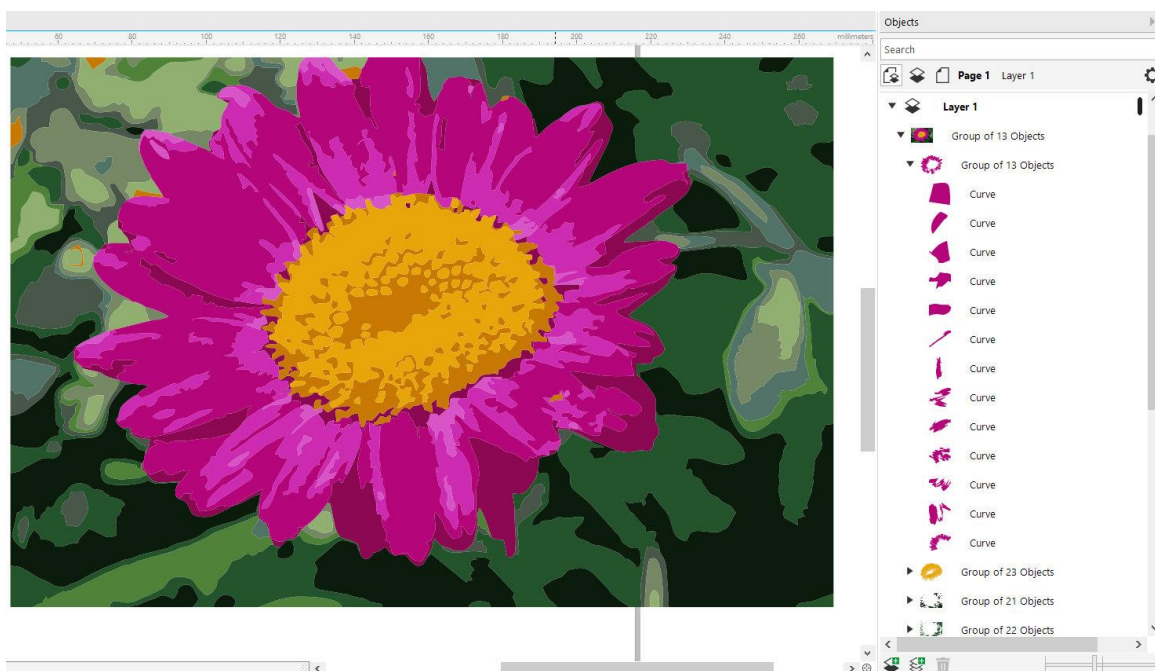
Click on the **Colors** tab and set the number of colors you want your clipart image to contain. In this case, 5 or fewer colors shows very little detail; increasing to about 13 works well. You can also reduce the number of colors by combining colors: press the **Shift** key while selecting them and then click **Merge**.



On the **Settings** tab you can adjust the level of **Detail**, **Smoothing**, and **Corner smoothness**. You can specify a background color to remove, but since our photo has several colors in the background, we will leave this option alone. Check **Group by Color**, which will make same-color curves easy to remove as groups.

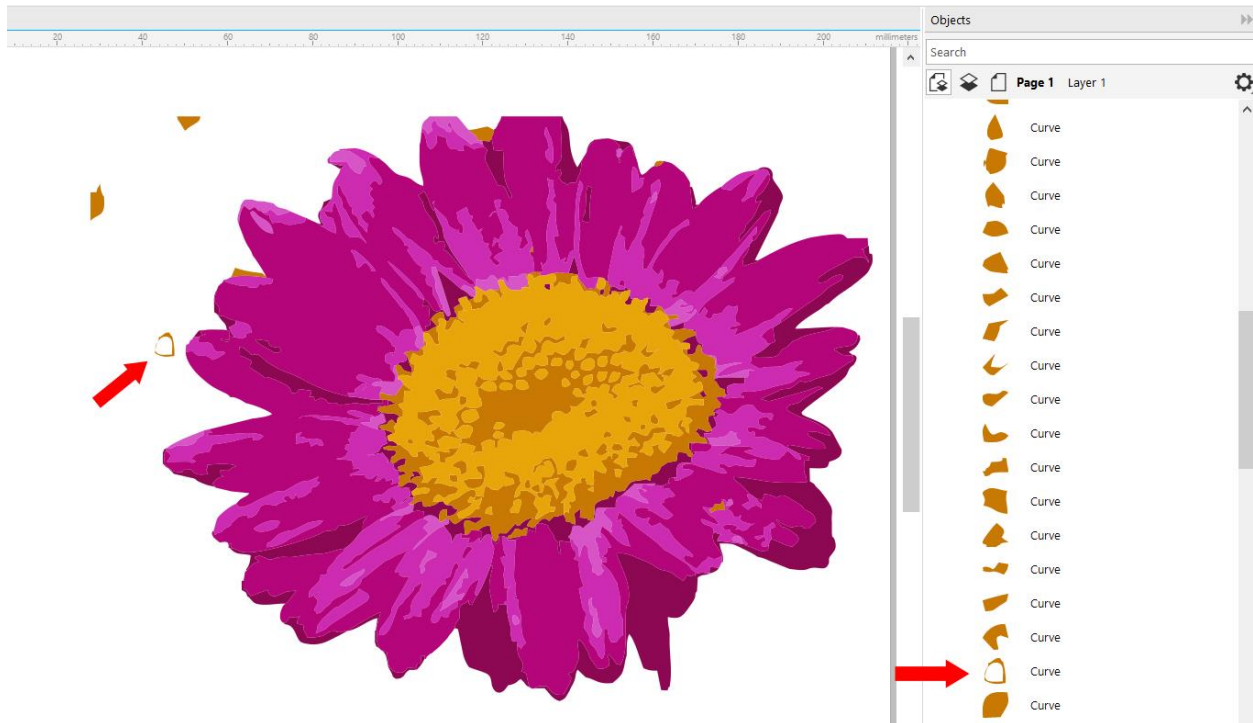


Click **OK** and **PowerTRACE** will create the new vector object, which will be placed directly on top of your photo. You can use the **Pick** tool to move it aside for comparison. In the **Objects** docker (**Window > Dockers > Objects**), you will see that the new vector object is a group comprised of multiple objects, each of which are groups of same-color curves.



In order to isolate just the flower, we need to delete any color groups that are not pink or yellow. Select an unwanted color group in the **Objects** docker and then press **Delete** on your keyboard or click the **Delete** icon (trashcan) at the bottom of the **Objects** docker.

***TIP:** Hold down the **Ctrl** key to select multiple objects or groups and then delete all at once.*



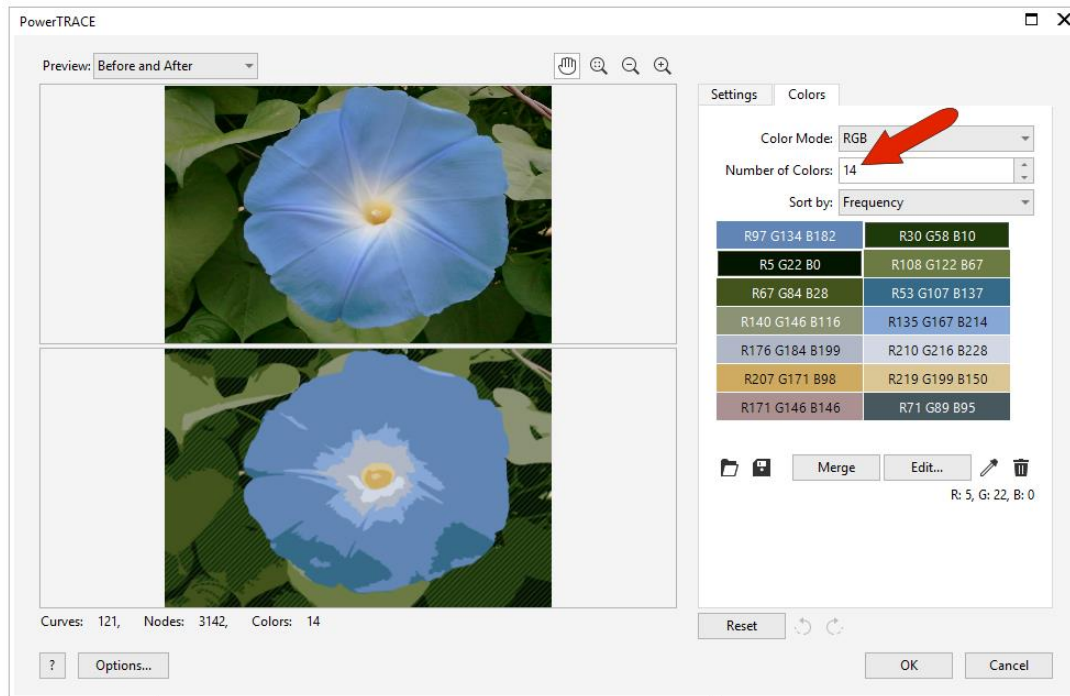
In this example, we have a few gold objects that need to be removed but they are part of the color group that also contains objects we want to keep (the center of the flower).

To remove single objects from within a group, either hold down the **Ctrl** key and double-click on the object to select it, or select it in the **Objects** docker, then delete. Now we are left with our clipart flower image, which we can save as a .CDR file to use in future documents.

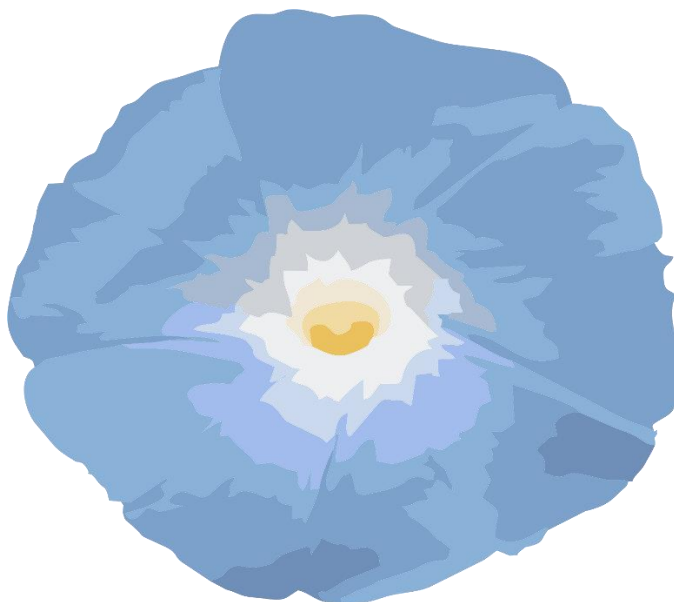


Other Tracing Methods to Make Clipart

The **Outline Trace** method has several options you can experiment with, to see which works best to make clipart from your photo. With our second flower photo, the **Clipart** option only yields a maximum of 14 colors, which isn't quite enough to produce results we're happy with.



For better results, try the other options, such as **Detailed Logo**, **High Quality Image**, or **Low Quality Image**, all of which use different default settings. In this example, using the **Low Quality Image** option produces 24 colors, which works well for this clipart flower.

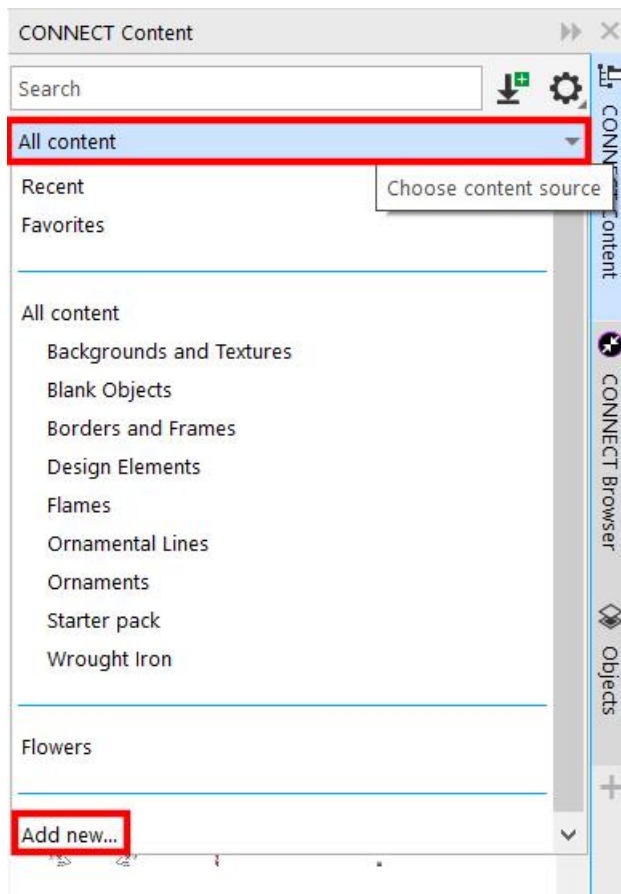


Saving and Using Your Clipart

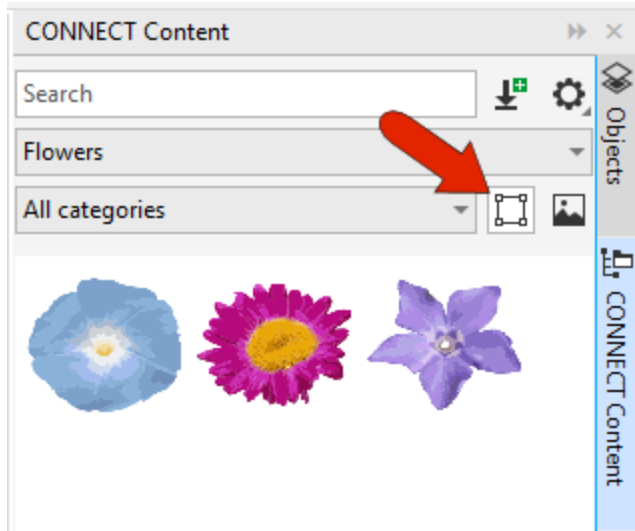
Once you have used **PowerTRACE** to make clipart from a photo, save the clipart image as a .CDR file. To use the clipart image, simply open as you would any .CDR file.

You can also create a specific folder for your clipart and add it as a content source in the **CONNECT Content** docker.

In the **CONNECT Content** docker, open the **Choose content source** dropdown and select **Add new**, then click **Create alias**. Browse to the location on your computer where you saved your clipart folder and select it, then click the **Select Folder** button.



Now when you click on the **Choose content source** dropdown you will see the new folder you added. If your folder contained both .CDR files and raster images like JPG and PNG, you can toggle on or off the **Show vector** and **Show raster images** icons to view only one type if you wish.



To add images from the **CONNECT Content** docker to your document, simply drag them in or click the **Import** icon in the bottom left corner of the docker.



To learn more about **PowerTRACE**, watch our tutorial [How to Convert JPG to Vector](#).

To learn more about the **Objects** docker, watch our tutorial [Managing Objects, Layers and Pages](#).