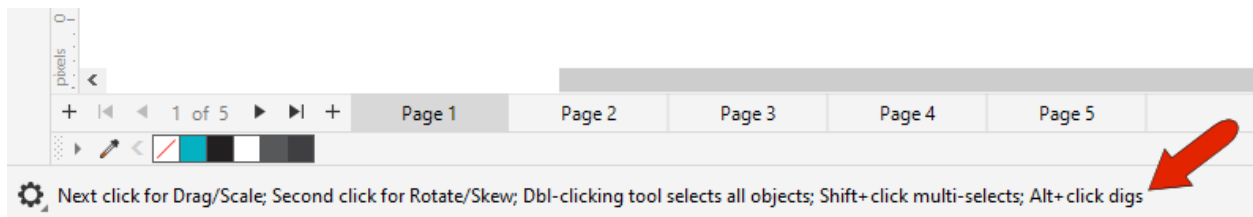


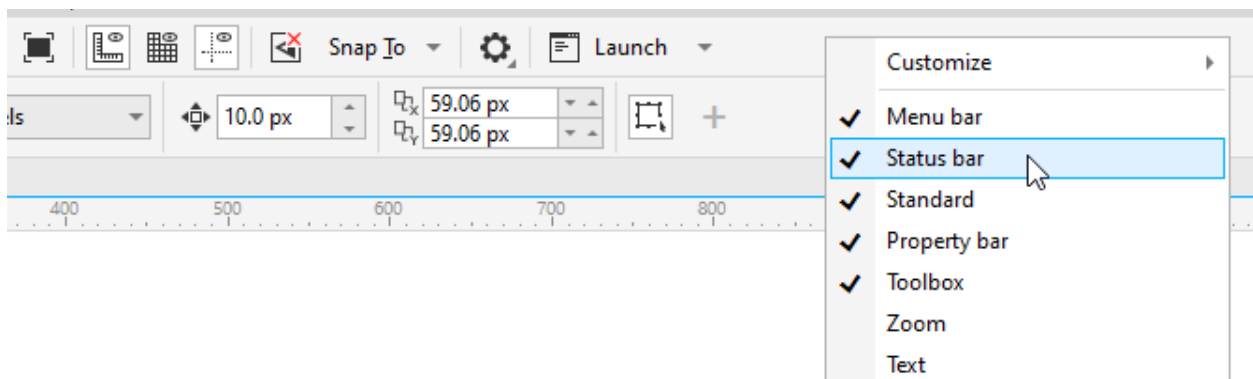
# Exploring the Status Bar in CorelDRAW

In this tutorial, we'll review the icons and options on CorelDRAW's **Status bar**.

By default, the **Status bar** runs along the bottom of the CorelDRAW workspace, below the **Document Navigator** and **Document Palette**.

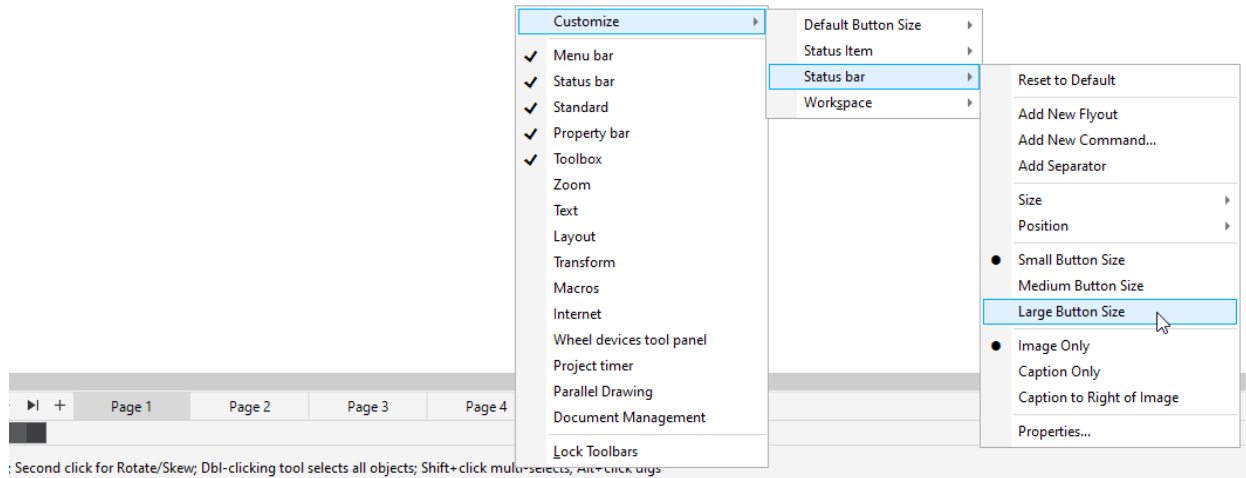


For Windows users, if you don't see the **Status bar**, right-click in any toolbar area and toggle on **Status bar**.

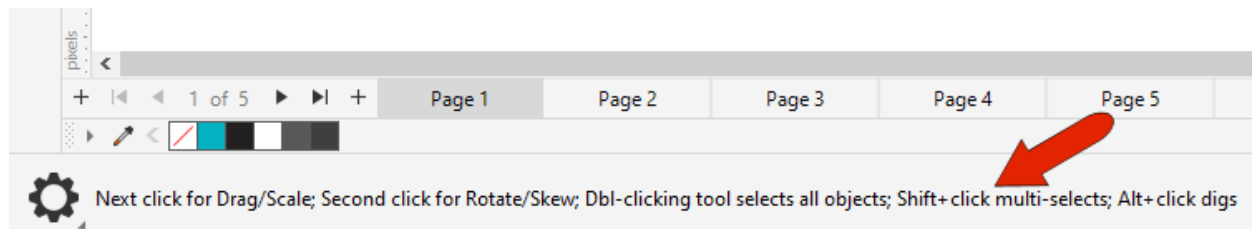


The **Window > Toolbars** menu is another place where you can toggle toolbars on and off. For Mac users, if the **Status bar** is not displayed, choose **View > Show Status bar**.

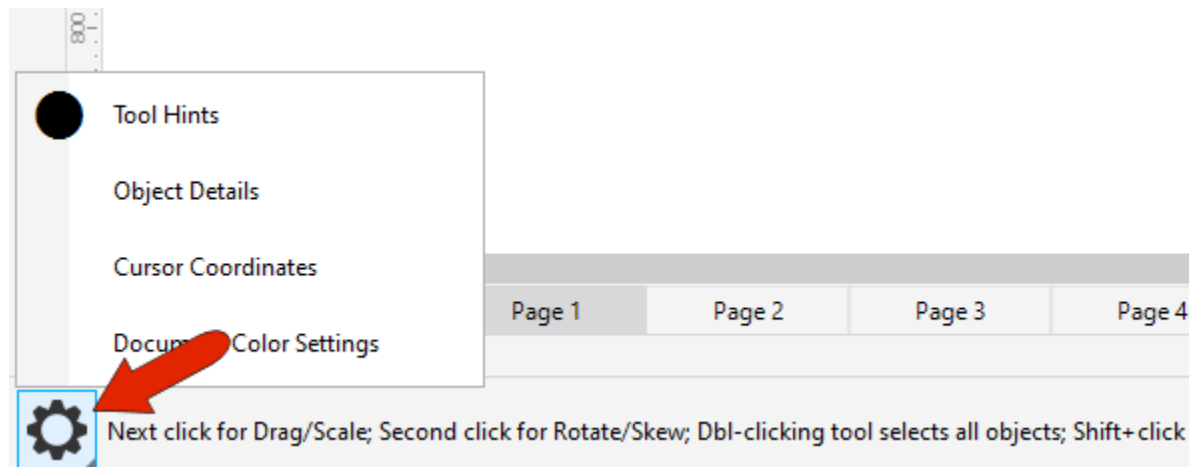
For Windows users, right-clicking in the **Status bar** itself opens a menu where the first option is **Customize**. You can set the default button size for all toolbars, or just for the **Status bar**. We'll look at other customization options a bit farther on.



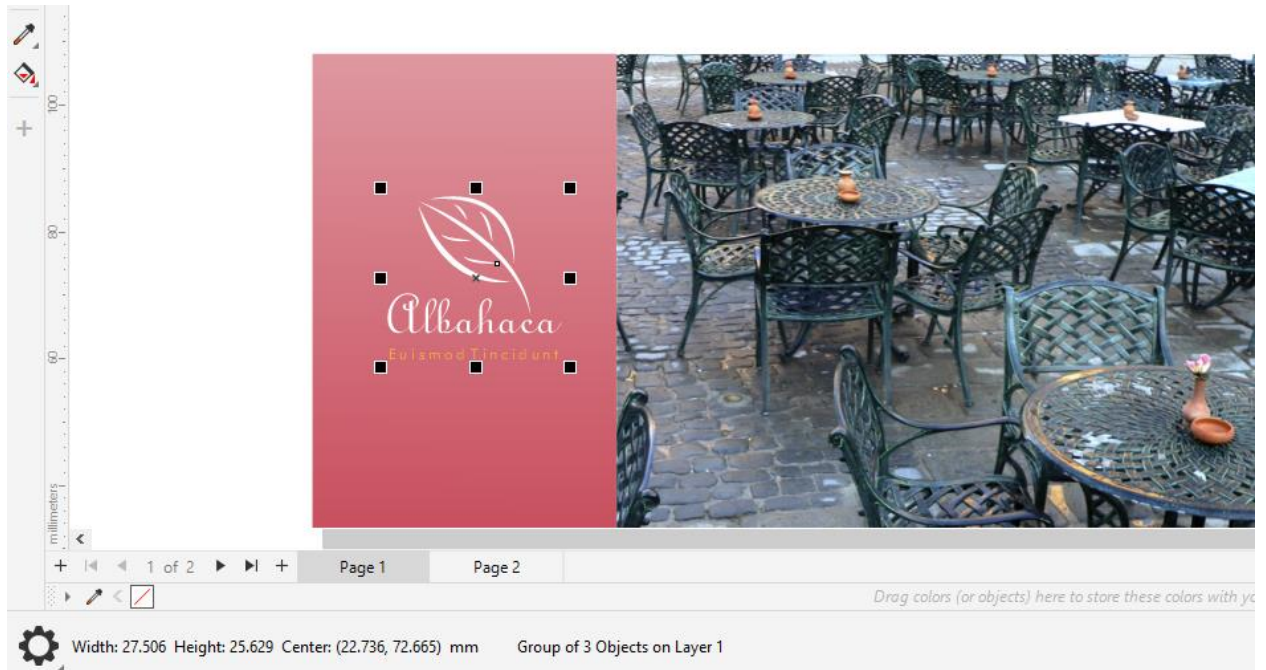
Also by default, the **Status bar** for Windows users displays **Tool Hints** about the currently active tool. For example, when the **Pick** tool is active, the **Status bar** lets you know what single and double-clicks do, as well as what happens when you add modifier keys such as **Shift** or **Alt**. Tool hints change each time you activate a new tool.



To set the **Status bar** to display different things, click the **Gear** icon.

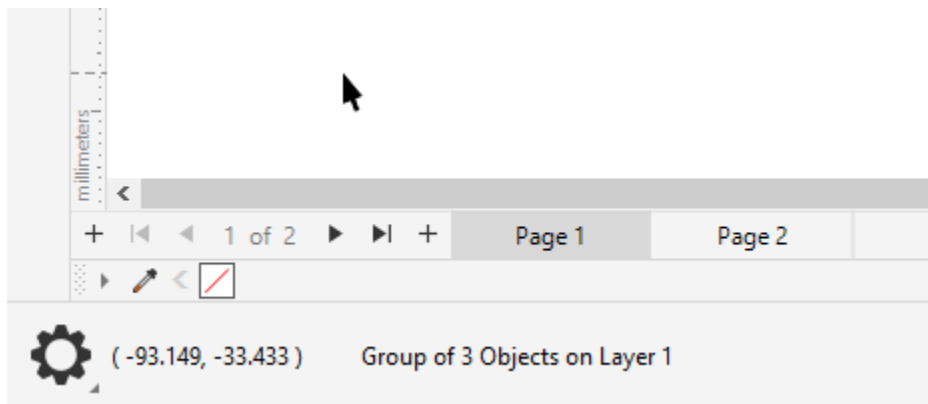


Switch to **Object Details** (which is the default **Status bar** setting for the Mac version) and activate the **Pick** tool. As you would expect, object details depend on what's selected. For example, while a group is selected, you can see its dimensions and center point coordinates, number of objects, and its layer.

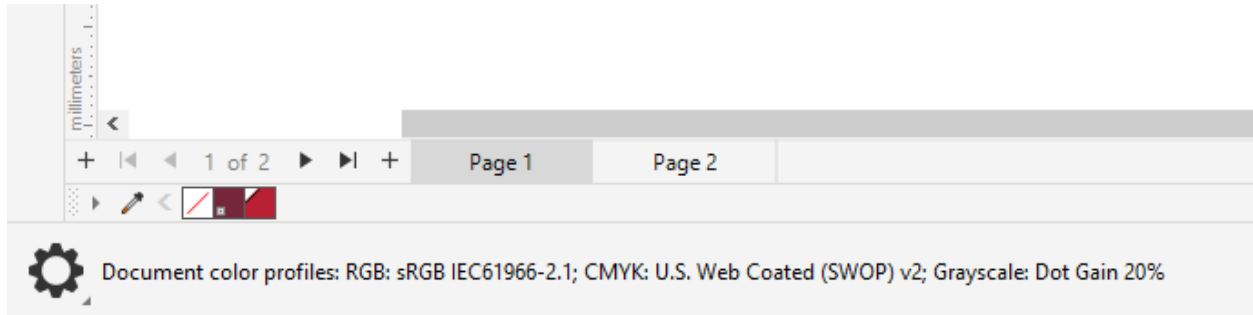


For a selected image you would also see its type and resolution, and for selected text you would see its position and font details.

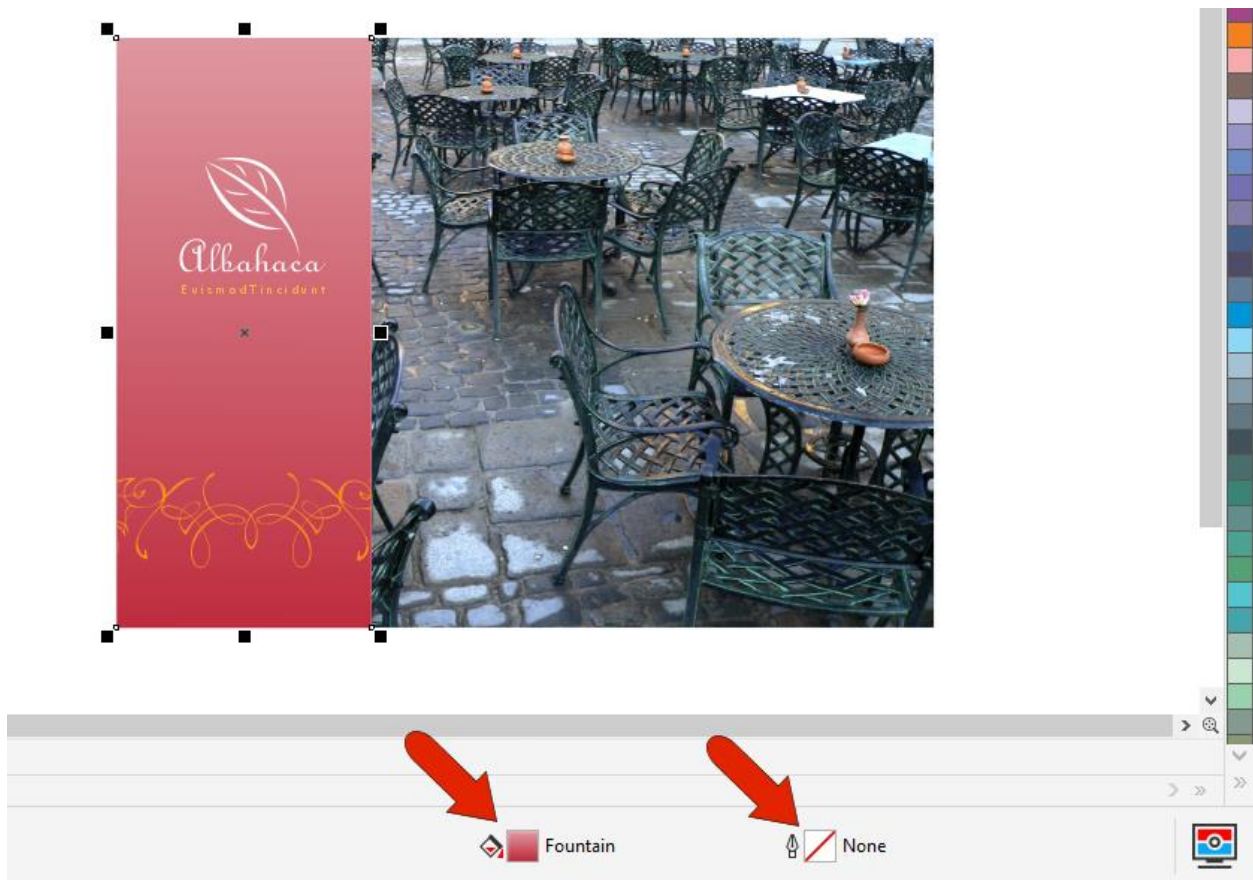
Switch to **Cursor Coordinates**, and the coordinates update as you move your cursor around.



You can also view **Document Color Settings** which displays the color profiles that have been selected for this document.

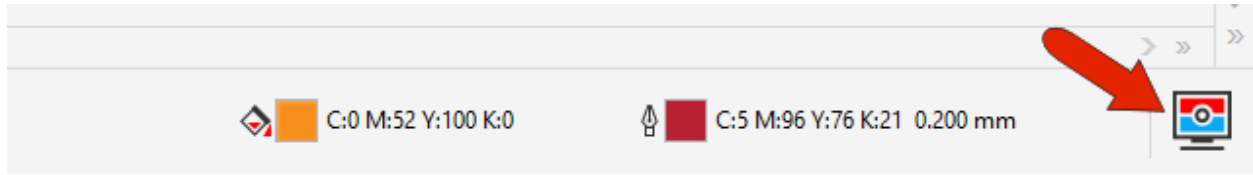


On the right side of the **Status bar** are icons that display fill and outline properties for the currently selected object. For example, for this selected rectangle has a fountain fill and no outline.



Double-clicking the **Fill** icon opens the **Edit Fill** window, in which all fill properties can be edited. Similarly, double-clicking the **Outline** icon opens the **Outline Pen** window, in which outline properties can be edited.

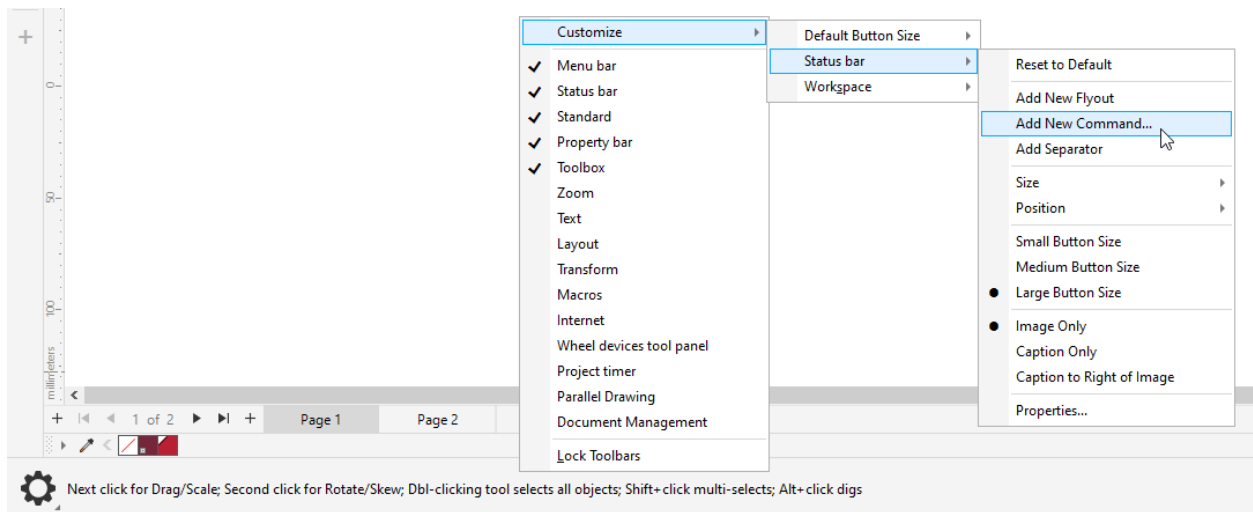
At the end of the **Status bar** is an icon to toggle on or off **Proof colors**, which simulates how the printed output will look.



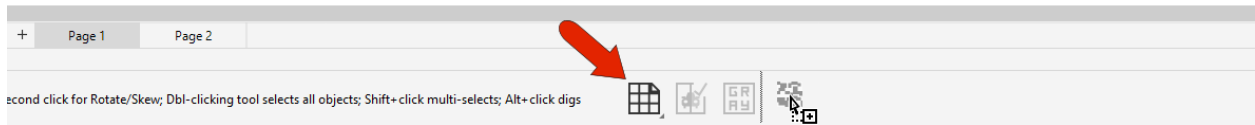
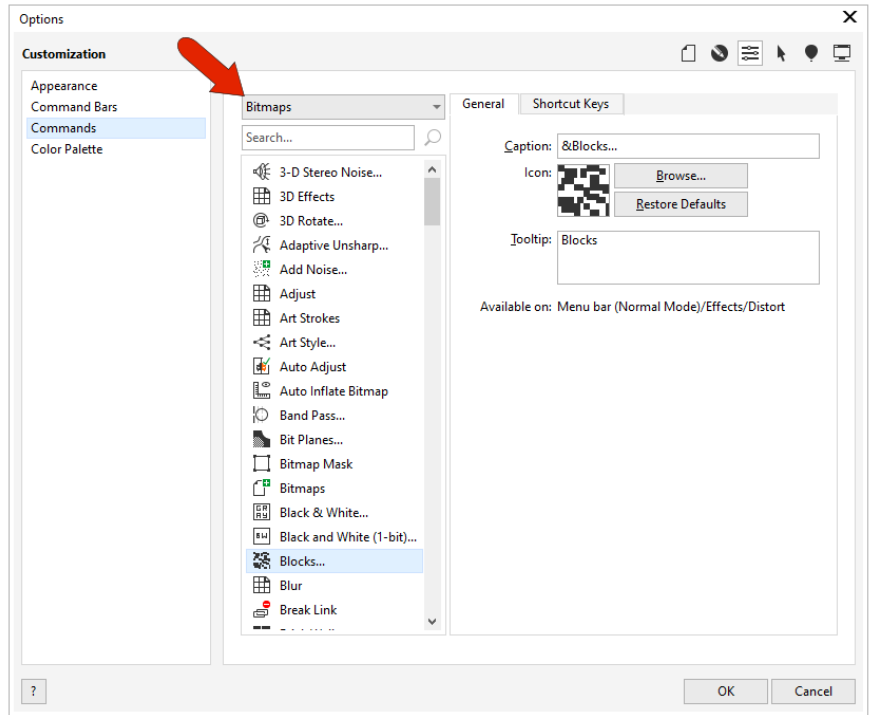
## Customizing the Status Bar

The options that appear when you right-click in the **Status bar** and choose **Customize > Status bar** are available in the Windows version of CorelDRAW Graphics Suite, but are not available in the Mac version, CorelDRAW Standard or CorelDRAW Essentials.

With the **Add New Command** option, you can add frequently used commands to the **Status bar**.

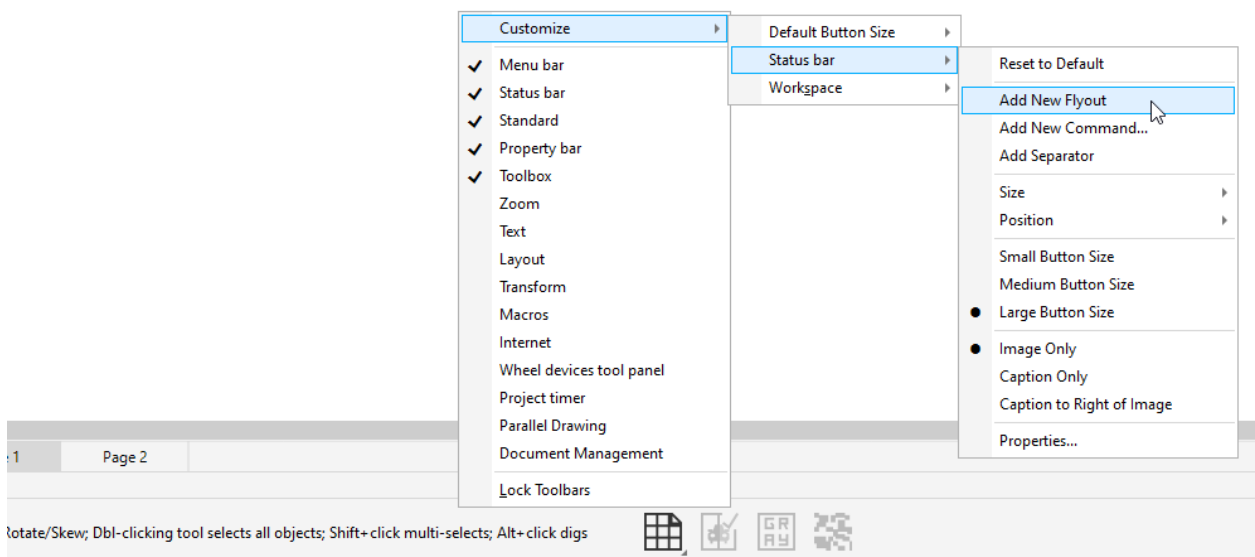


For example, if you work often with bitmaps, you may want quick access to **Bitmaps** tools. You can drag icons from the **Options** window right into the **Status bar** and remove icons by dragging them off. Another way to remove an icon from the **Status bar** is to right-click on the icon and choose **Customize > Status Item > Delete**.

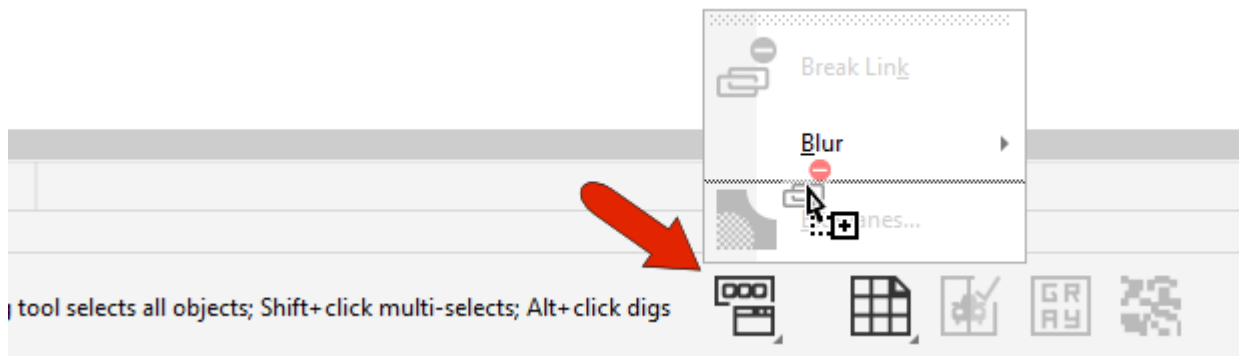


To add a separator line to the **Status bar**, right-click on the icon to the right of where you want the separator and choose **Customize > Status bar > Add Separator**.

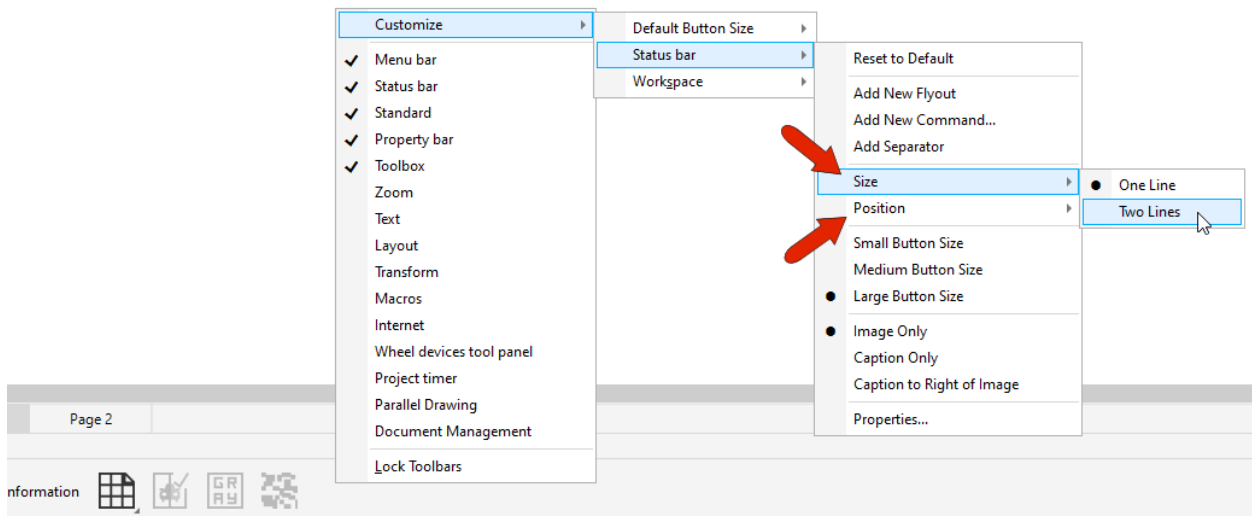
You can also add an entire toolbar flyout.



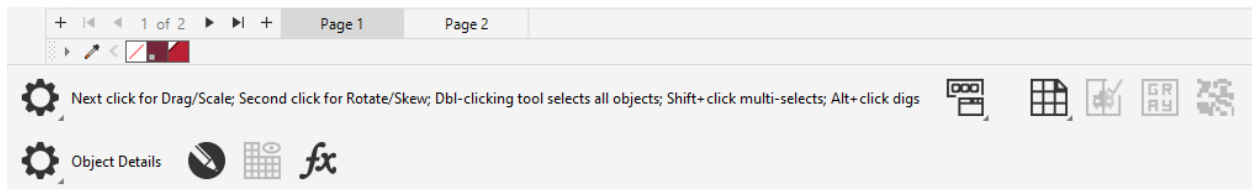
The flyout comes in empty, but you can use the **Add New Command** option to populate the flyout. Drag each command icon onto the flyout, then drag it into the correct position within the flyout.



You can use the **Position** option to place the **Status bar** along the top instead of the bottom, and with the **Size** option you can increase the **Status bar** to two lines.



With a two-line **Status bar**, you can display, for example, both **Tool Hints** and **Object Details**, and add command icons to both lines.



Finally, the **Customize** menu for the **Status bar** also has a **Properties** option. When **Status bar** is selected on the left, many of the customization options here can be set on the right.

