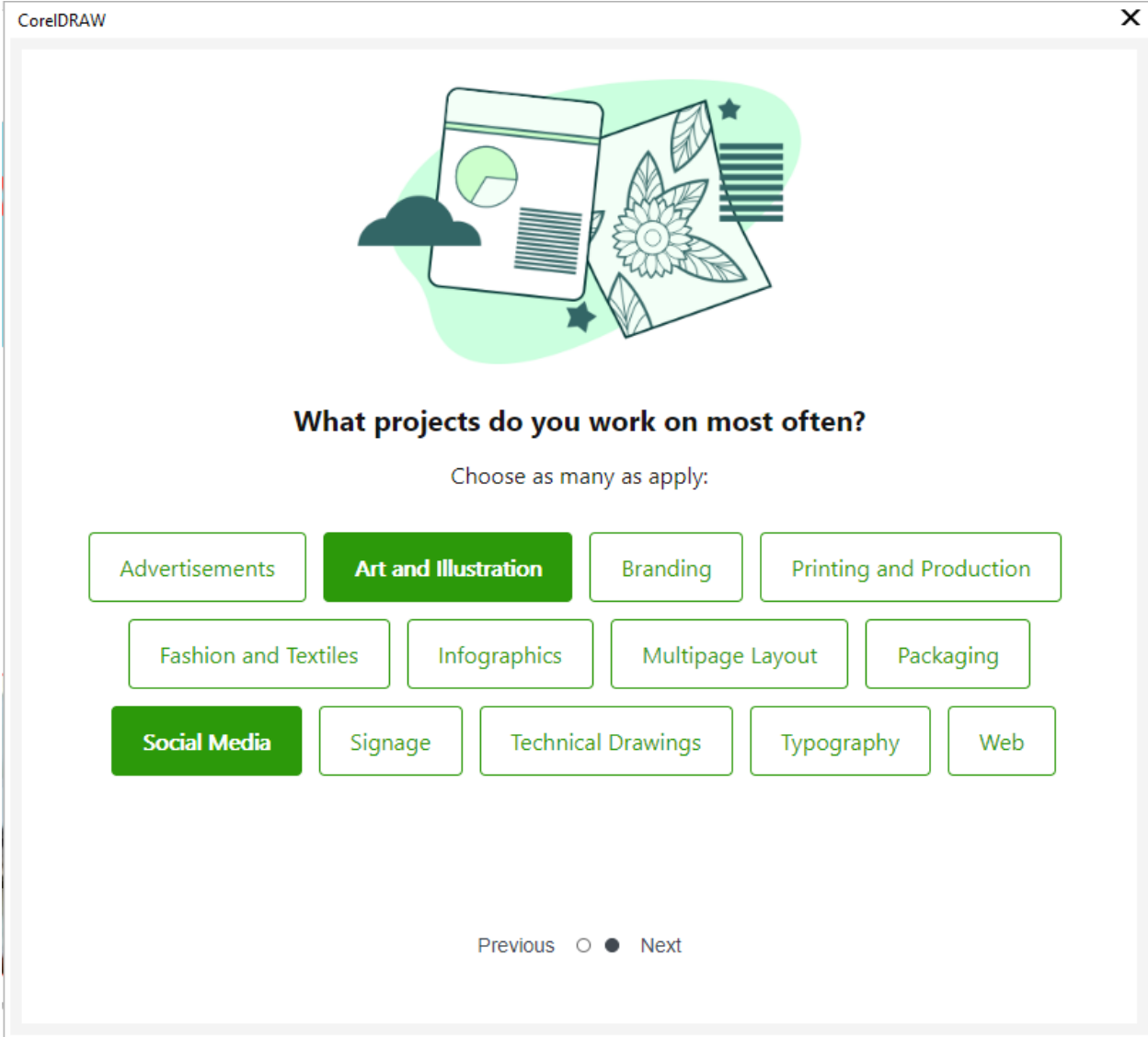


In this tutorial, we'll explore the **Learn** docker in CorelDRAW and Corel PHOTO-PAINT, and demonstrate how customizing your profile can help you access relevant practice files, to get you up to speed in the features most helpful for your work.

Note that most of the features described in this video are relevant only for CorelDRAW Graphics Suite subscribers. All users have access to the **Learn** docker, but for non-subscribers, this docker will contain only the **Hints** tab.


If you're a CorelDRAW Graphics Suite subscriber, when you first open CorelDRAW or PHOTO-PAINT, you'll be presented with the **Personalization** window. This is where you can tell us your experience level, and the types of projects you work on most often.



We'll link this information to your profile, in order to curate learning content just for you.

On the last page of the survey, you'll see one or more practice projects selected for you, based on your responses. The last icon is **Explore More Tutorials**, and clicking this icon takes you to the **Learn** docker.

CorelDRAW

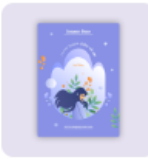




**Thank You!**

Your answers will help us provide better recommendations for you.

Visit the **Explore** section of the **Learn** docker to search for resources and tools.

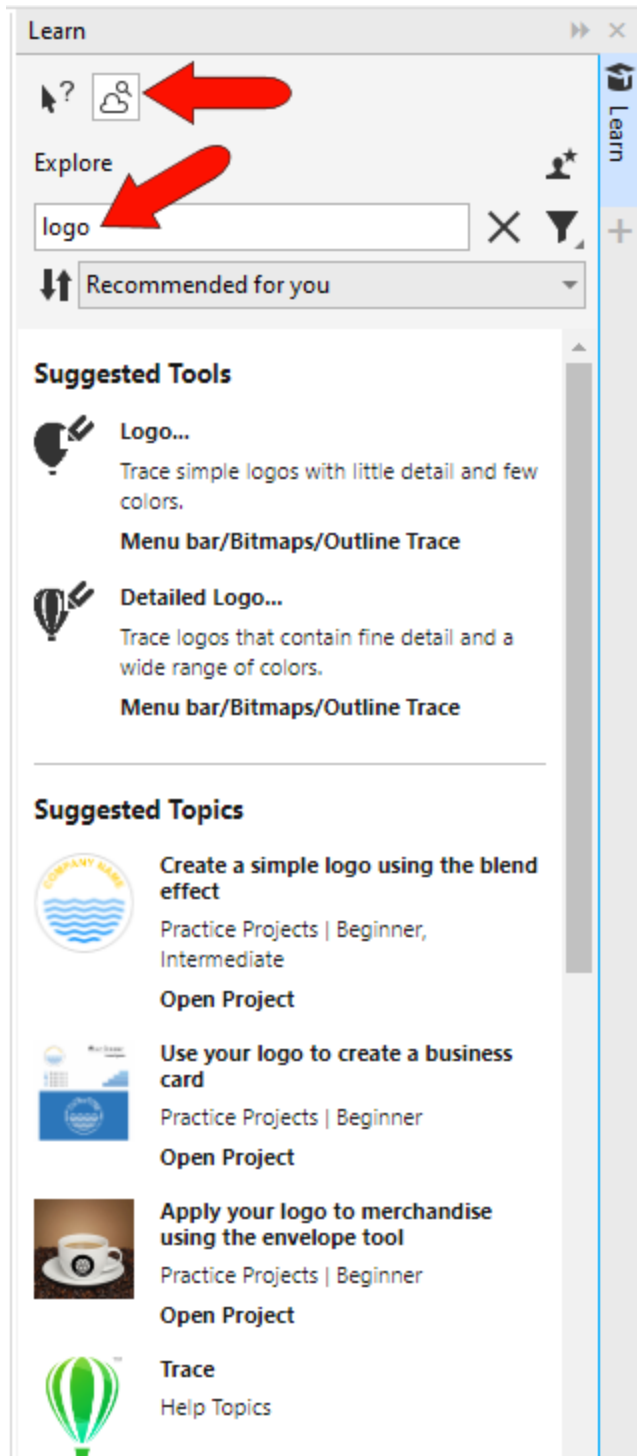
The list of learning resources has been updated based on your profile.  
Get started with these practice projects

		
Design an illustrative...	Design a summer mark...	Explore more tutorials

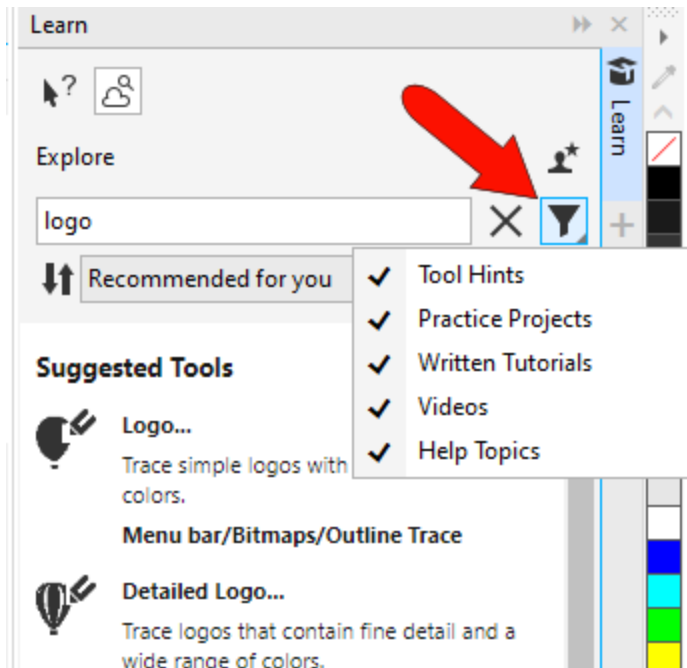
Close

If CorelDRAW or PHOTO-PAINT is already open, the **Learn** docker can be opened from the **Window > Dockers** menu, or by clicking the **plus** icon below the current set of docker tabs.

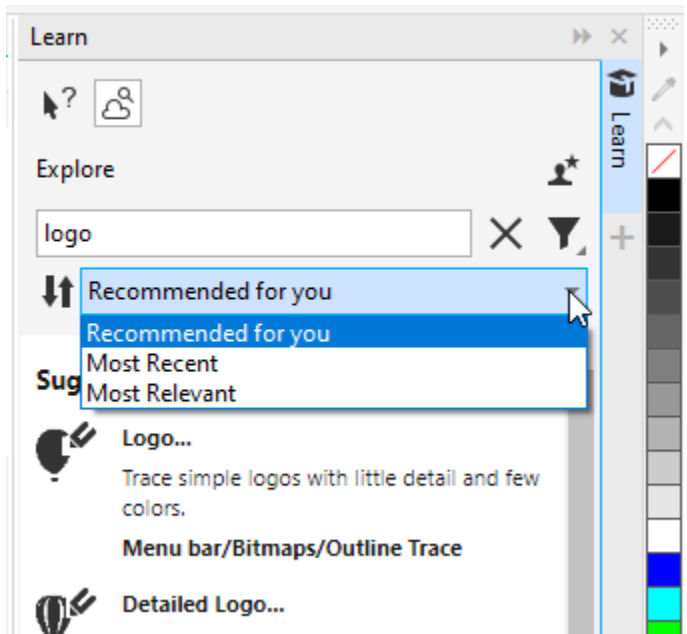
On the **Explore** tab, available to subscribers only, you can enter a search term, such as “logo,” to find learning content on that topic.



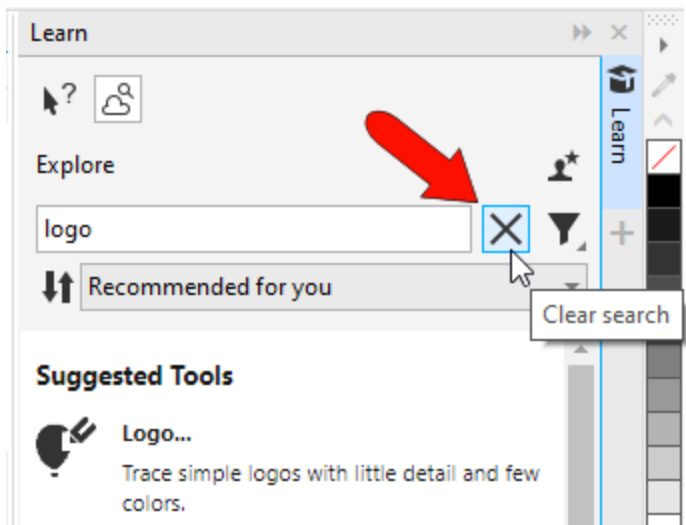
By default, the filter options are set to show all content, including tool hints, practice projects, written tutorials, videos, and help topics.



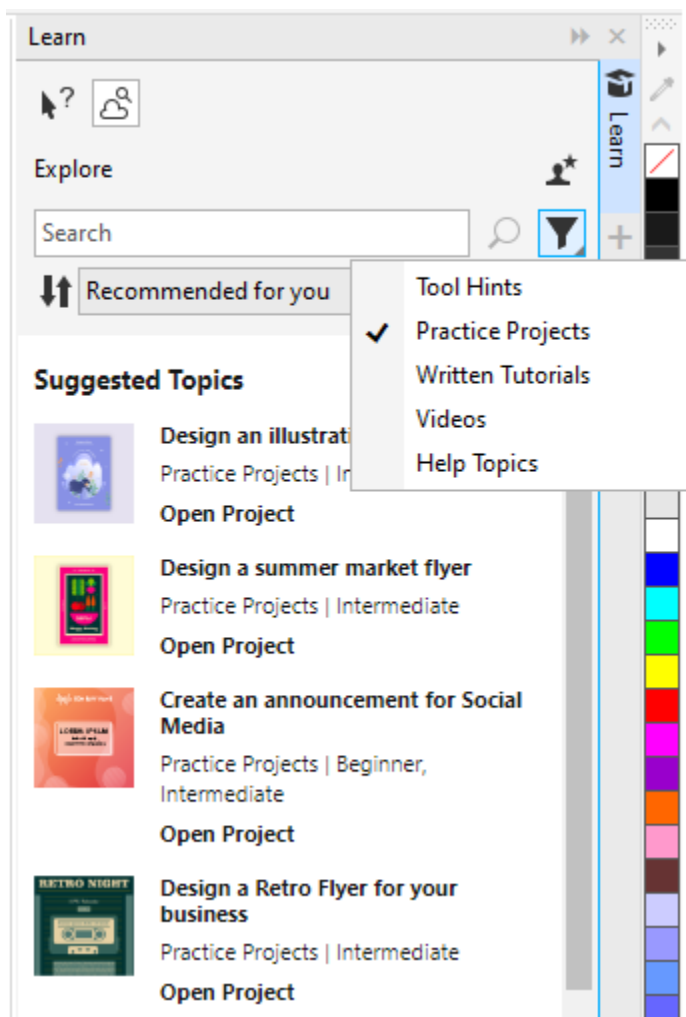
The sorting option **Recommended for You** lists content first that suits your profile. Switching to **Most Recent** shows recently added content first, and the **Most Relevant** option sorts the list to show the content most relevant to your search term.



Clicking the **X** icon clears the search field.



In this example, content results are filtered to show only practice projects, and this list includes all practice projects for all types of users.

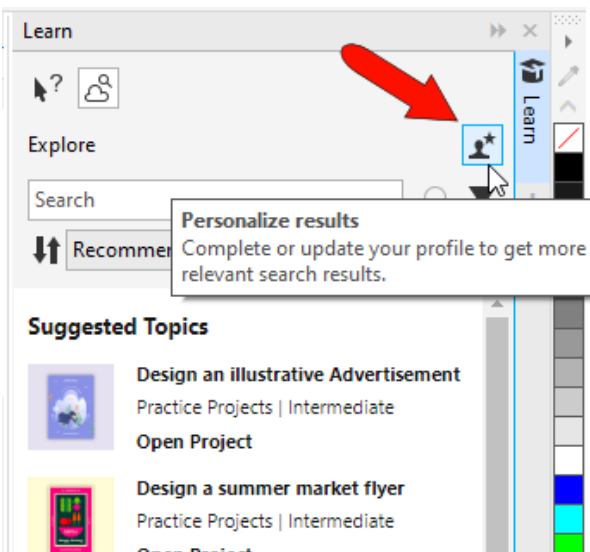


The **Recommended For You** filter is handy for seeing practice projects that fit your profile, and switching to **Most Recent** may display new practice projects you haven't seen before.

Clicking a practice project opens the file directly in CorelDRAW or PHOTO-PAINT, where you'll find detailed steps for replicating the practice design.

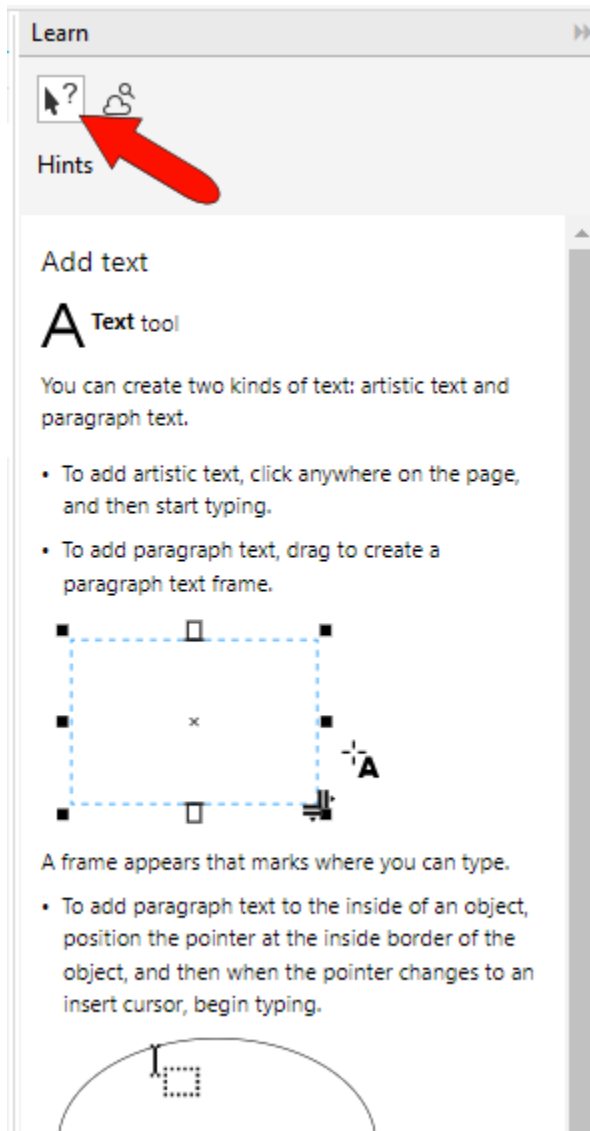


Let's say you've already been using CorelDRAW or PHOTO PAINT without having filled out the profile survey. Or perhaps you did respond but now want to change or update your answers. Clicking the **Personalize results** icon re-opens the survey, which will list any previous answers.



Updating your responses updates your profile, which enables us to show you the learning content most relevant to you. And clicking a practice project from this window also opens it directly.




The other tab in the Learn docker is **Hints**, available to all users, which provides learning content and tips for the currently active tool.



The **Learn More** section has links to help topics and other relevant content.




Fit text to a path), and insert and edit text (Insert and edit text).

### Learn more

-  **Help topic**  
[Format text](#)
-  **Video**
  - [Adding text](#)
  - [Enhanced Font list box](#)
  - [Corel Font Manager \(Part 1\)](#)
  - [Corel Font Manager \(Part 2\)](#)
  - [Text effects - PowerClip](#)
  - [Create a mosaic text effect](#)
-  **Tutorial**
  - [Typography by Marc Bech](#)
  - [Cool tricks with paragraph text by Steve Bain](#)

From this tab you can also access the **Ideas Portal**, where you can help contribute to CorelDRAW Graphic Suite's design and development.

### Learn more

-  **Help topic**  
[Format text](#)
-  **Video**
  - [Adding text](#)
  - [Enhanced Font list box](#)
  - [Corel Font Manager \(Part 1\)](#)
  - [Corel Font Manager \(Part 2\)](#)
  - [Text effects - PowerClip](#)
  - [Create a mosaic text effect](#)
-  **Tutorial**
  - [Typography by Marc Bech](#)
  - [Cool tricks with paragraph text by Steve Bain](#)

### Your voice matters

[Share your ideas and suggestions \(English\).](#)





You can submit your own ideas and suggestions, and vote on ideas and suggestions made by others.

The screenshot shows the CoreDRAW Ideas Portal. At the top left is the CoreDRAW logo and the text "CoreDRAW Ideas Portal". Below the logo is a search bar with the placeholder text "Search all ideas...". To the right of the search bar are links for "Log in / Sign up". On the left side, there is a green button labeled "+ ADD A NEW IDEA" and a section for "FILTER BY CATEGORY". The main content area is titled "All ideas" and features a list of ideas. Each idea includes a "VOTE" button, a title, a description, and a timestamp. The ideas listed are:

- 1 Add drawing scale to toolbar on CoreDraw for Mac**  
I was able to use it in CoreDraw on PC. Doesn't work the same for Mac computers  
Guest 3 days ago in 0
- 2 Add search in preferences dialog**  
CoreDraw has a lot of different preferences grouped into several tabs. Finding a particular preference or a toggle sometimes takes a lot of time. Having a search bar in preferences would help finding a preference more quickly.  
Guest 4 days ago in 0
- 2 Objects Docker - Collapse Page View by Default**  
When I open a CoreDraw file with many pages, it takes me a while to scroll all the way the bottom to access the Master Page. So I have to, each and every time, collapse the pages to save time. This also makes it easy for me to switch back and for...  
Guest 4 days ago in 0

The **Ideas Portal** can also be accessed from the **Welcome Screen**, and from the CoreDRAW Community site.

The screenshot shows the CoreDRAW Welcome Screen. On the left is a vertical navigation menu with the following items: "Get Started", "Workspace", "News", "Tutorials", "CoreDRAW Academy", "Store", and "Ultimate Vector Bundle Volume 3". The main area displays a grid of document thumbnails, including "New Document...", "Product...on.cdrt", "Product...son.cdr", "AprilAscent.cdr", "Variab...ile.cdr", "Adopt.cdr", "Door.cdr", "Lucas ...AIR.cdr", "Review...te.cdr", and "Ascent...er.cdr". Below the thumbnails are buttons for "Open Document..." and "New from Template...". At the bottom is a navigation bar with five icons: "More tutorials", "Join the community", "Ideas and feedback", "User Guide", and "Contact support". A red arrow points to the "Ideas and feedback" icon.