

## Adding Picture Frames to your Photos

Just like framing the photos displayed on your wall, PaintShop Pro makes it easy to frame your digital photos as well. In this tutorial, you'll learn about the many framing options in PaintShop Pro's preset picture frames, learn how to get many more frames, and see how frames work with transparency and layers.

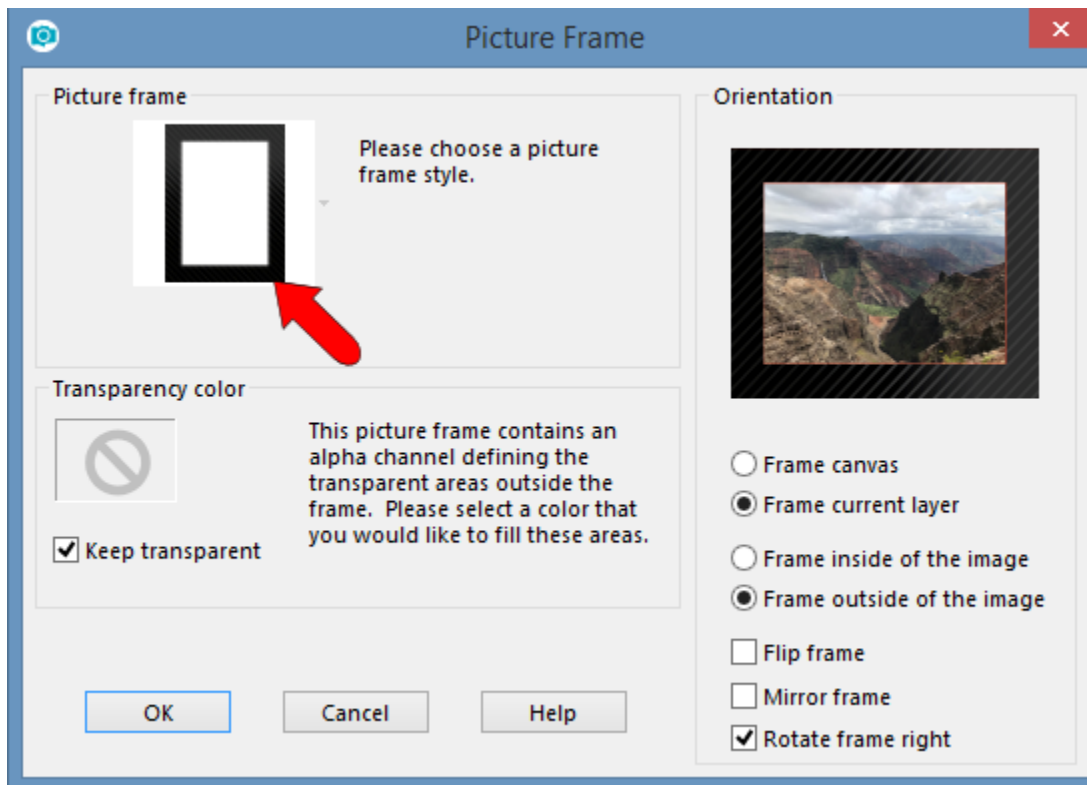
First, open PaintShop Pro and make sure you are in the **Edit** workspace.



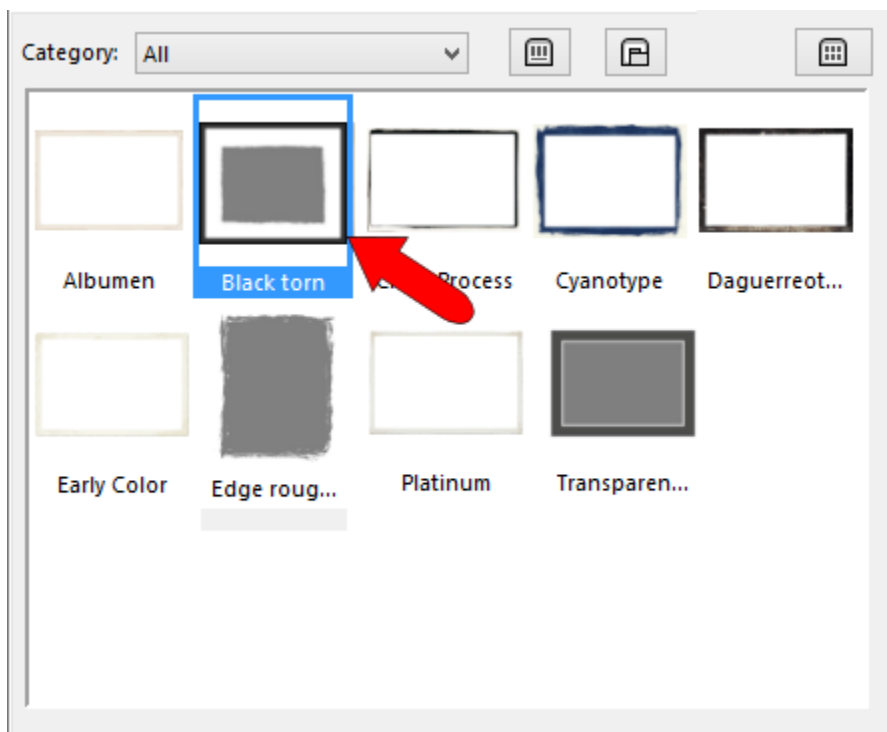
Open any photo you'd like to frame. In this example we are using the **Kauai.jpg** file.



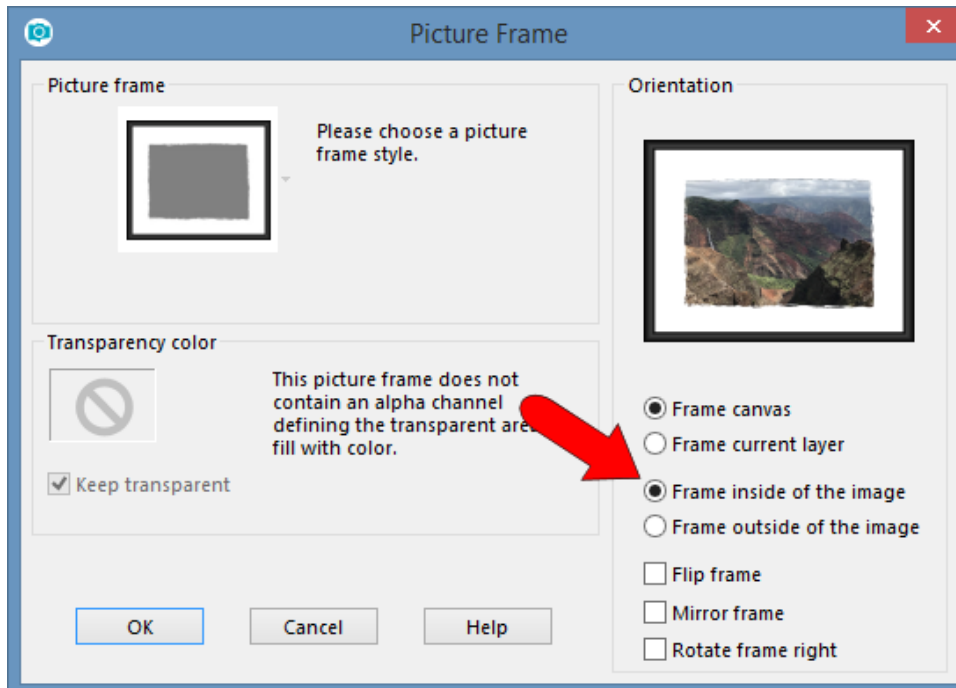
Go to **Image > Picture Frame**. The **Picture Frame** dialog box will open. Click the picture frame thumbnail to open the library of frames available.



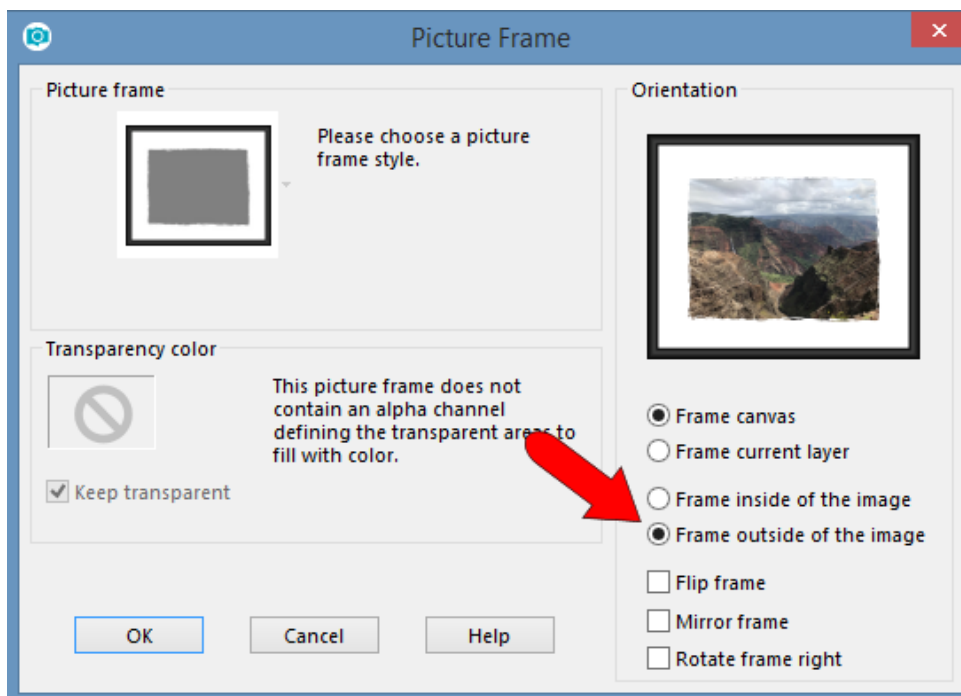
For a simple example, choose the **Black torn** frame.



The **Orientation** window shows how the framed image will appear. If you choose to **frame inside of the image**, the frame resizes to fit within the image canvas.



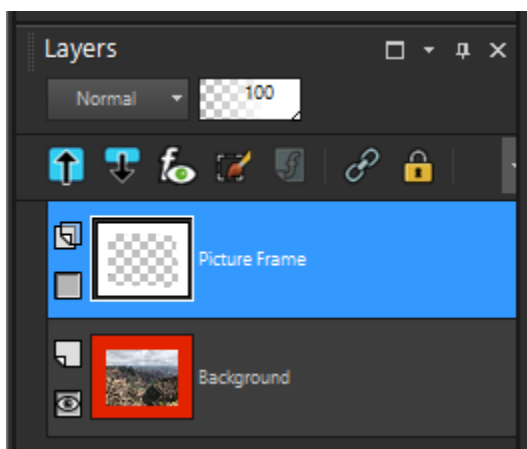
Or you can **frame outside of the image**, which means the canvas size updates to accommodate the frame.



Click **OK** to apply the frame.



Now a new layer is added, called **Picture Frame**. And because this frame was applied to the outside, meaning the canvas size was updated, the extra canvas appears as a color in the background layer (orange, in this case).



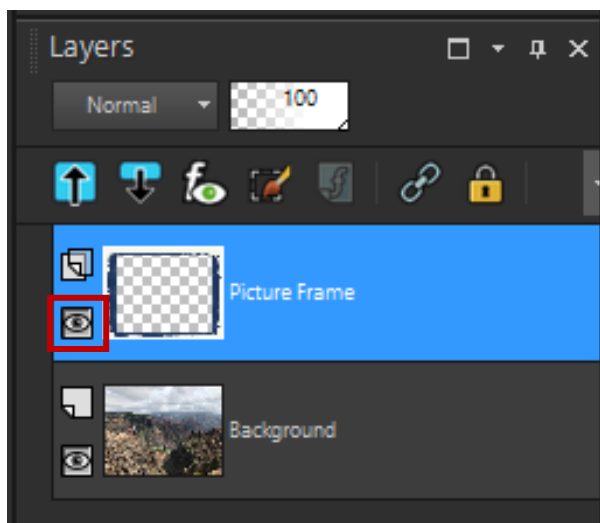
Use Undo (**Ctrl + Z**) to remove the frame and return to the original photo.

For the next frame, choose **Cyanotype**, which creates a thick, blue, hand-painted looking frame. The **Flip**, **Mirror**, and **Rotate** options can be used to establish which frame edge appears along which photo edge. In this example, the frame is applied inside of the image.



Because the frame was applied inside of the image, no extra canvas was added to the original background layer.

To try out different frames, click the visibility toggle (eye icon) to hide the layer with the first frame.

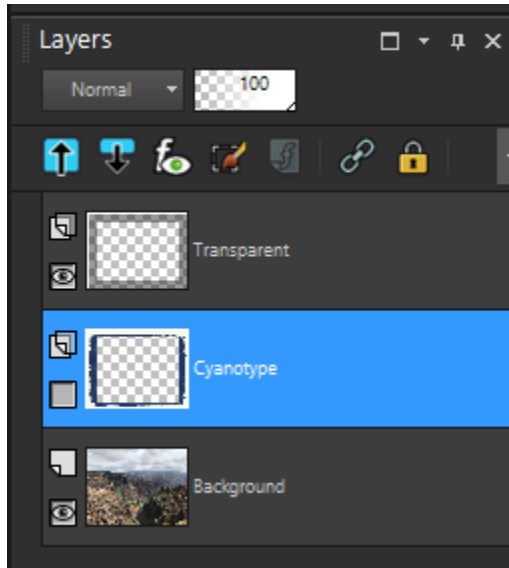




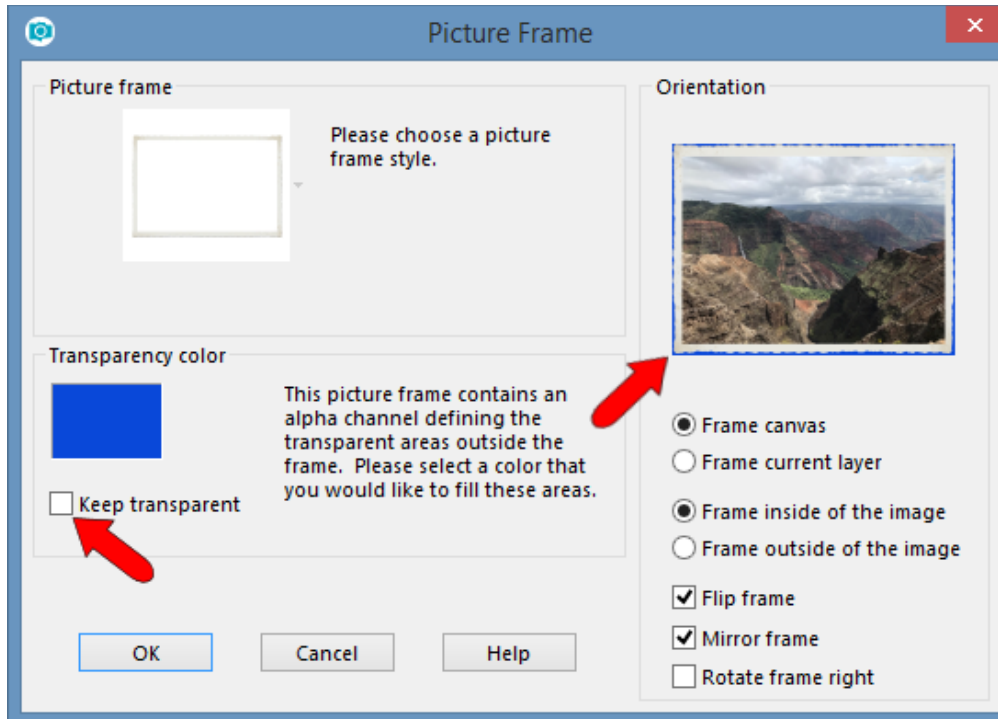
The second frame we are using is **Transparent**, and it will be fully visible on a new layer above the hidden layer with the Cyanotype frame.



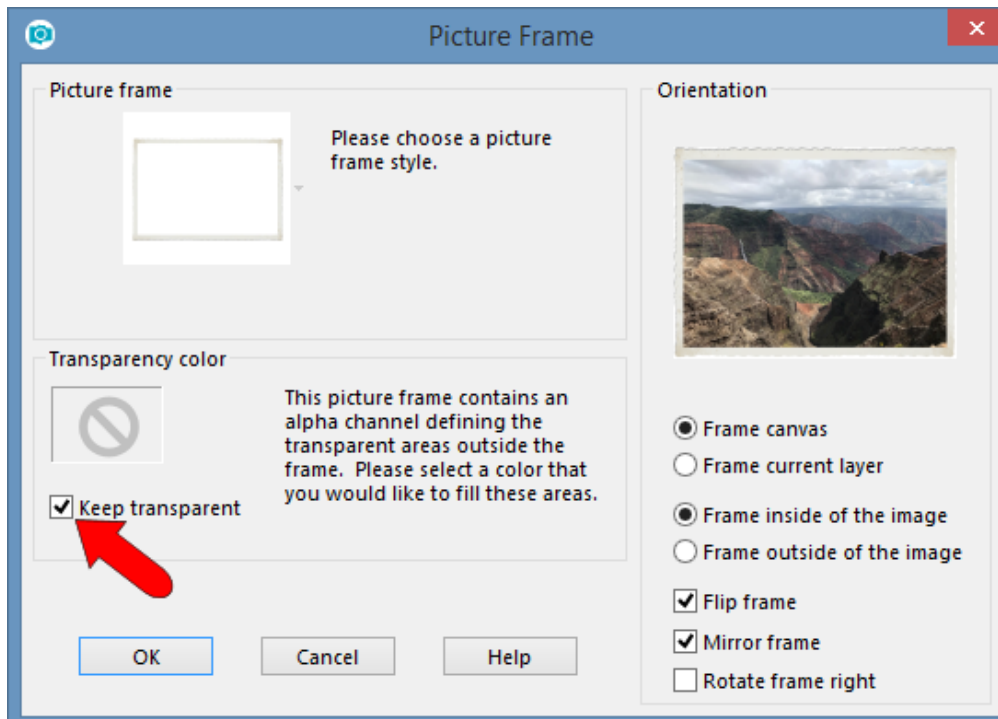
Each frame has its own layer, and you switch layer visibility to see which one you prefer. Layers are assigned default names, but you can click a layer name and assign a new name.

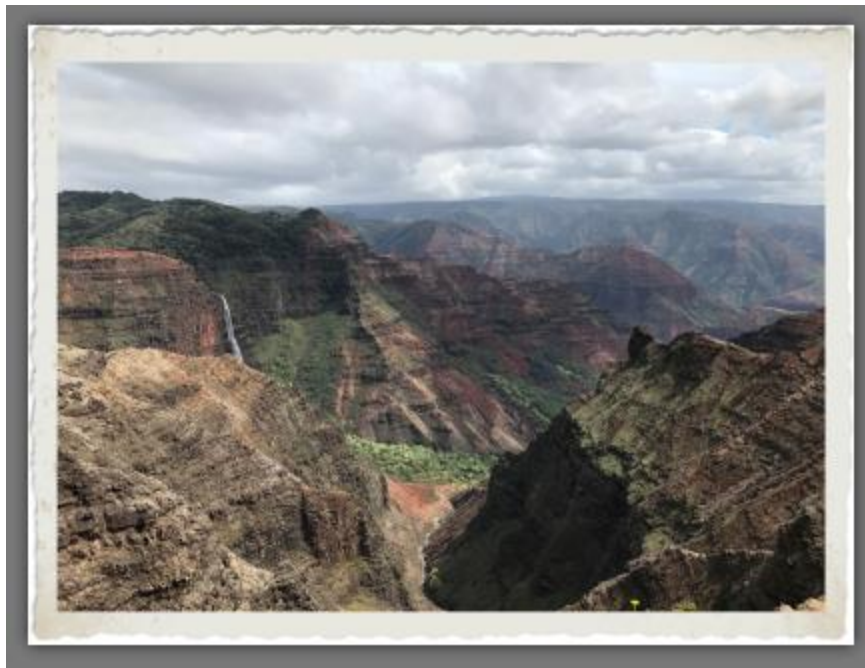


For an example of a frame with transparency options, choose the **Platinum** picture frame. When the **Keep transparent** box is unchecked, the frame background will be the color set in the **Transparency Color** swatch. You can click on the color swatch (blue in the example below) and select a different color for the frame background.



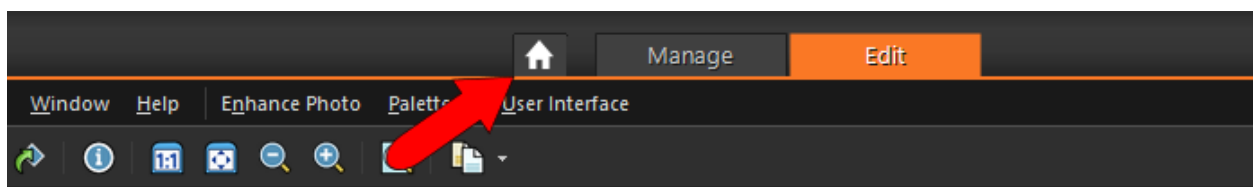
If the **Keep transparent** box is checked, the canvas background will show through.



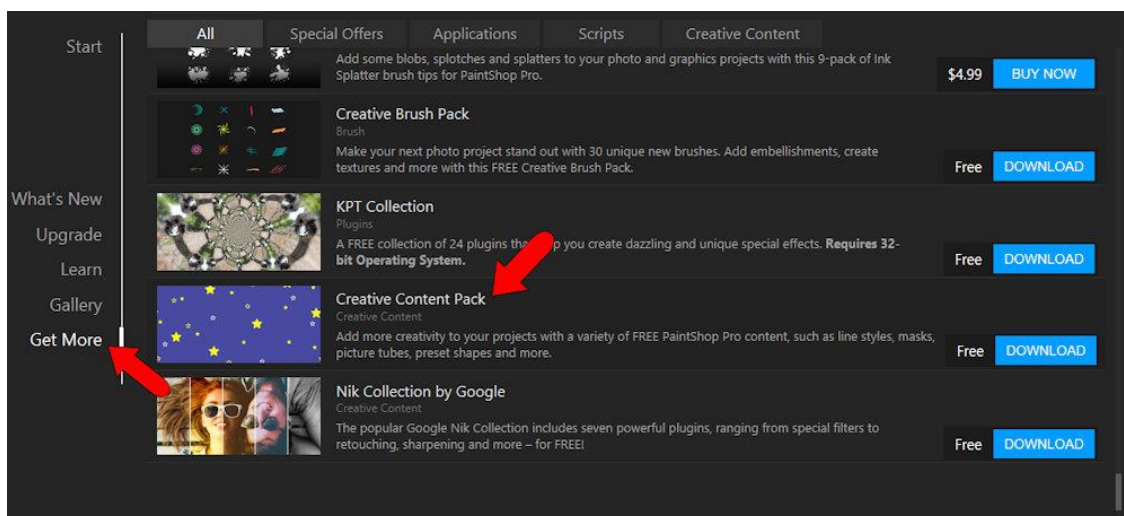


We'll look more at transparency in the next example.

In addition to the preset frames provided in your PaintShop Pro installation, there are also many more you can download. At the top of the window, click the **House** icon to go to the **Welcome** window.

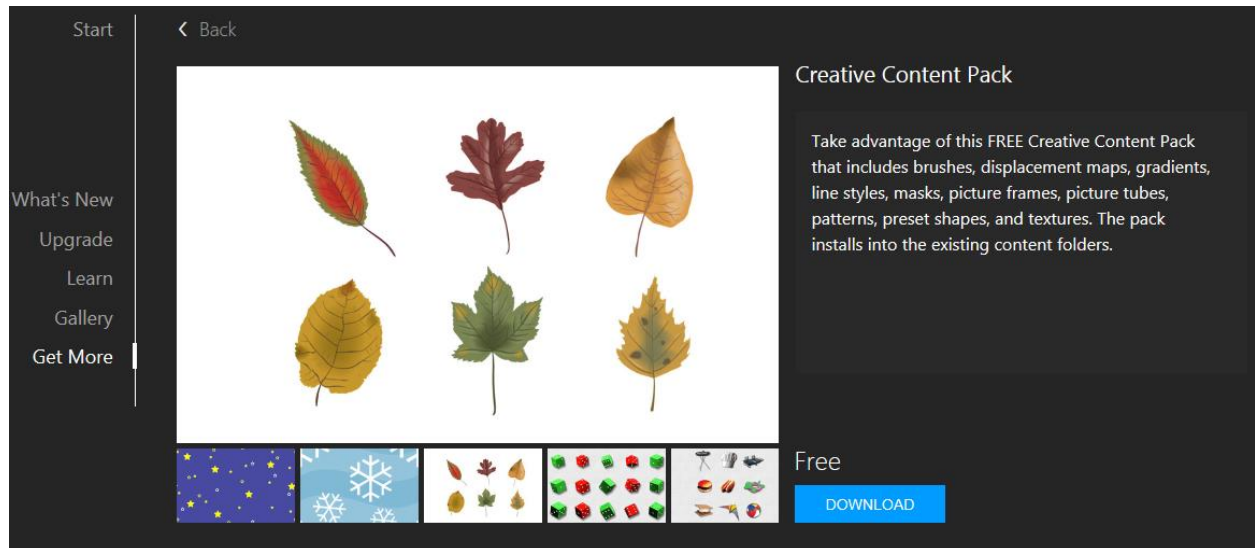


On the left side of the **Welcome** window, click **Get More**. On the right, scroll down to find the free **Creative Content Pack**. You can click the **Download** button to automatically install this set of line styles, masks, shapes, and frames. Or you can click the name or thumbnail of this pack to see more details.

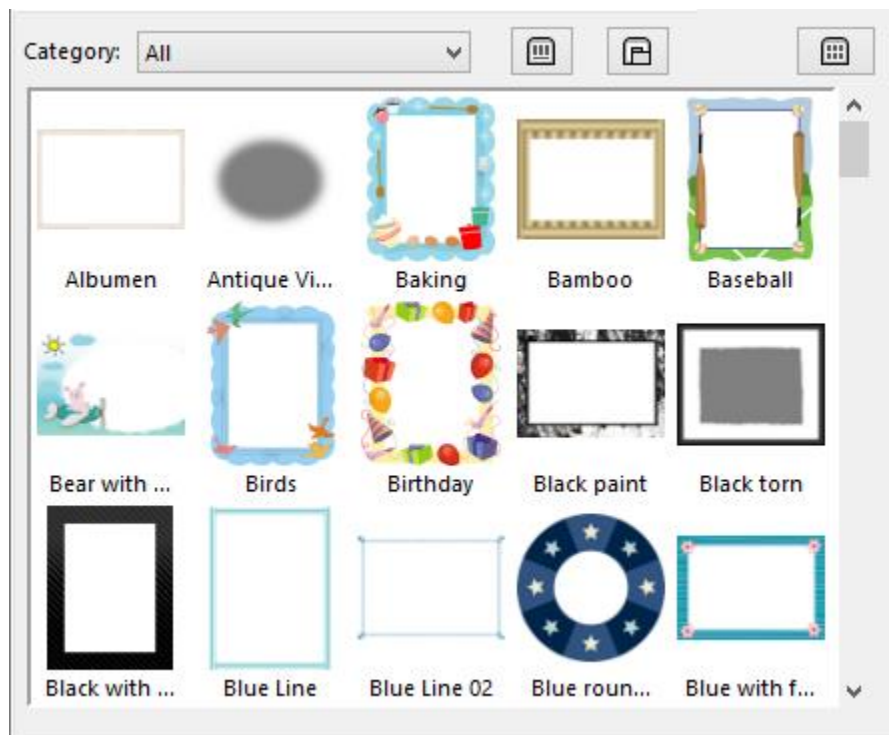




The details page for this pack also includes a **Download** button, which enables you to automatically install.

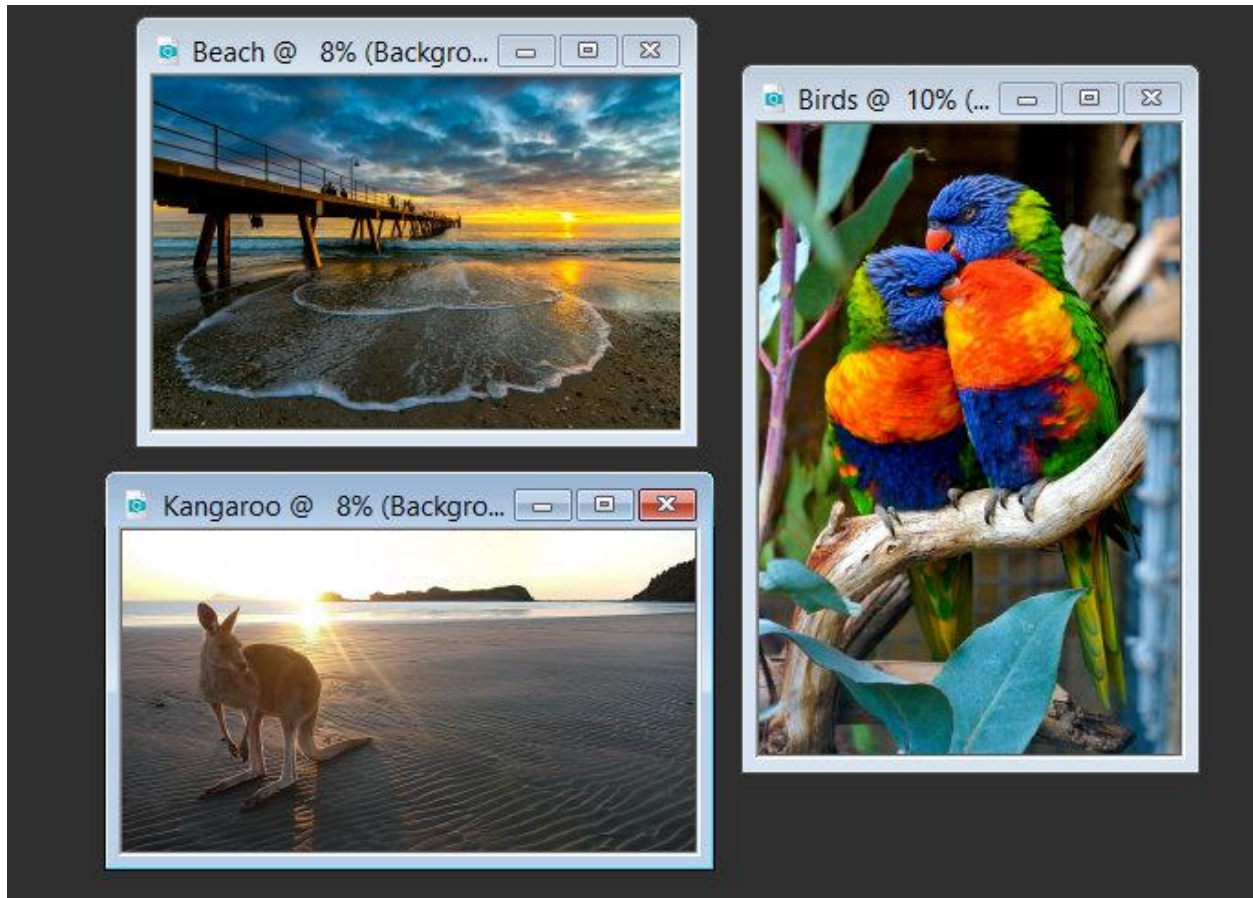


After the installation process is complete, your selection of frames is many times larger.

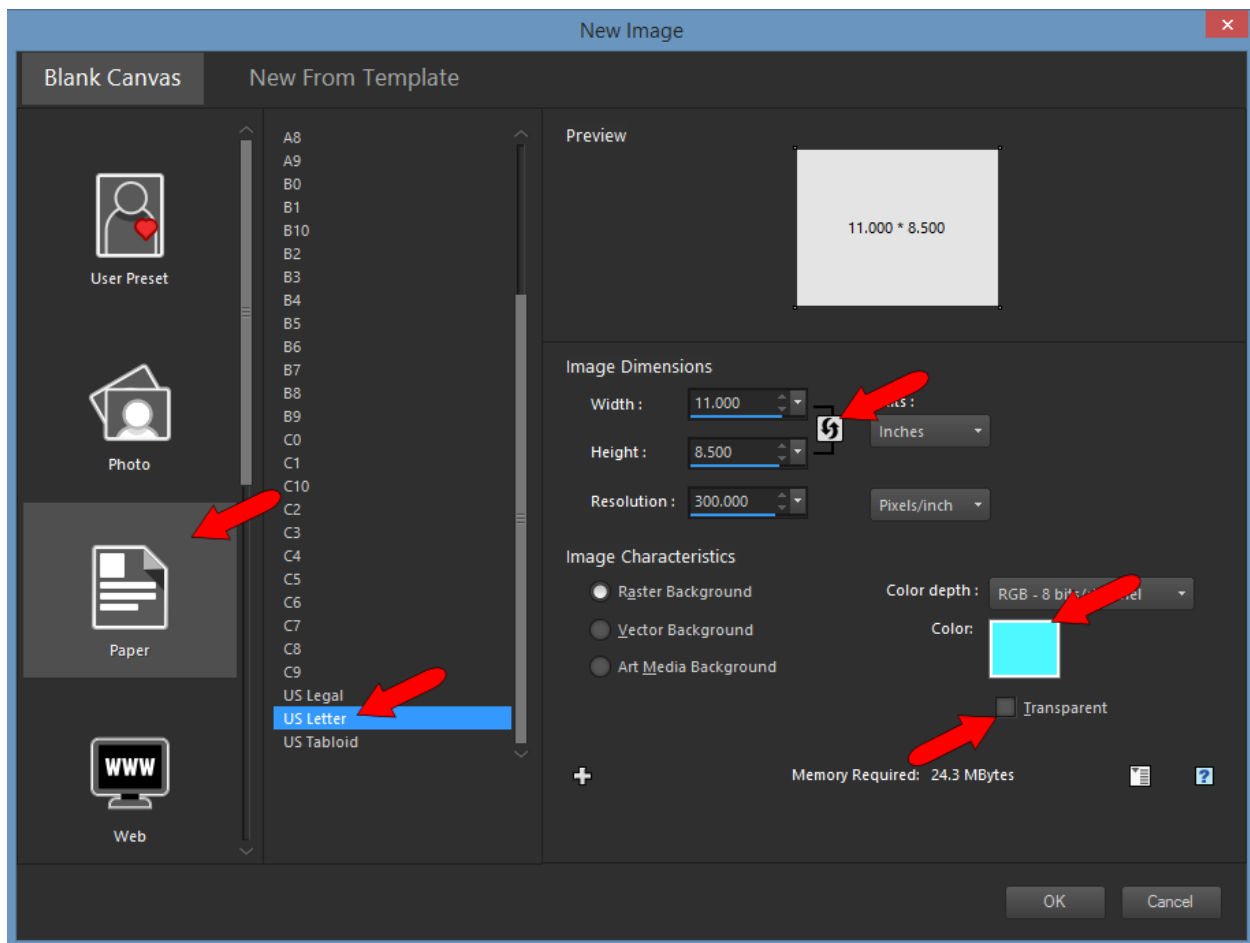


You can also find more picture frames available to purchase in the [Discovery Center store](#).

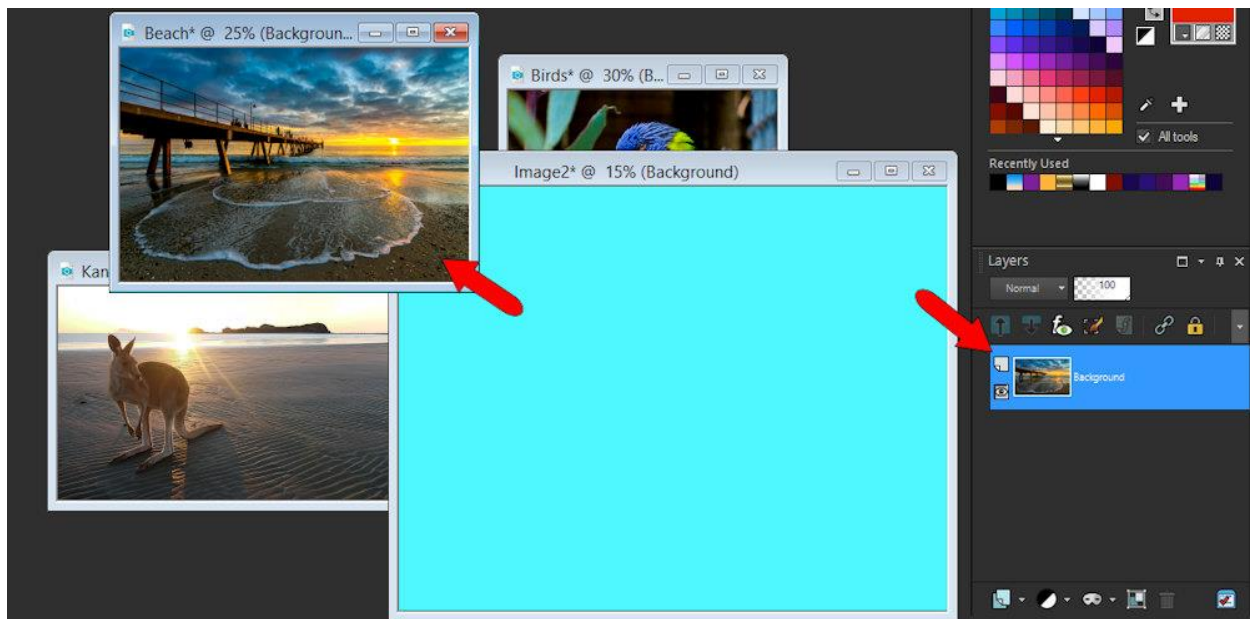
Now we can take a closer look at layers and transparency. Choose three photos you'd like to assemble into one collage image. Open all three photos in PaintShop Pro. In this example, two photos (Beach and Kangaroo) have landscape orientation, one (Birds) has portrait.



To create the collage canvas, go to **File > New**. In this example, the canvas comes from the **Paper** preset group, using the US Letter size. The width and height dimensions are reversed, for a landscape orientation. Transparent is unchecked, and a light blue background color is used.



To bring a photo onto this canvas, make sure that photo is active (highlighted), which makes its background layer active.



Drag that layer onto the empty canvas. The photo is placed at the center of the canvas. You can also use **Edit > Copy** (or **Ctrl + C**) to copy the photo, and **Edit > Paste** (or **Ctrl + V**) to paste the photo onto the collage canvas.



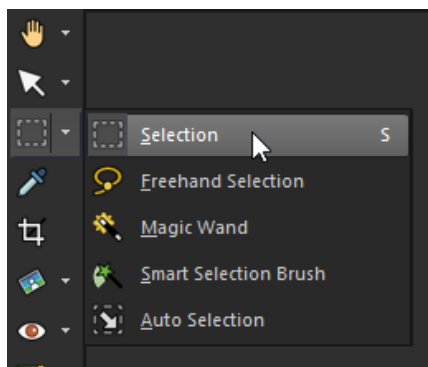
To move or resize the photo, activate the **Pick** tool, and place the photo where you want it to be in the collage.



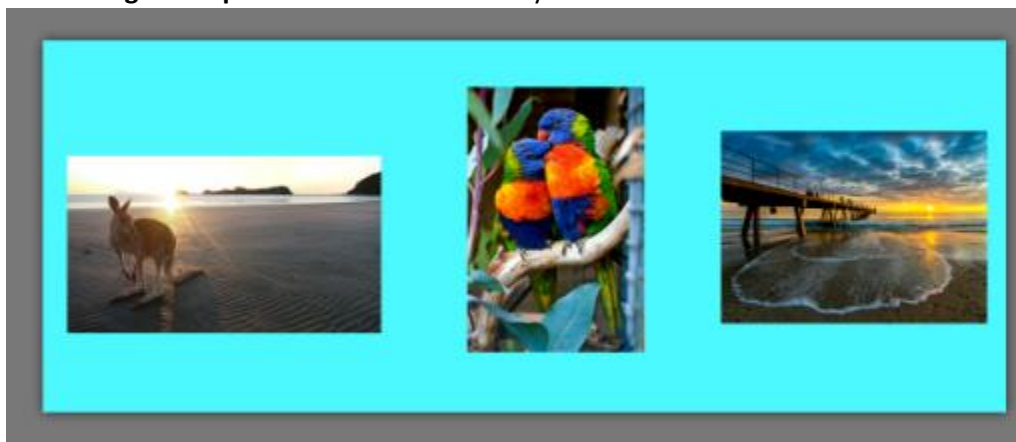
Repeat these steps to bring in and arrange all three photos onto the canvas.



To crop the canvas to the size you need, activate the **Selection** tool and drag to mark the area you want to keep.

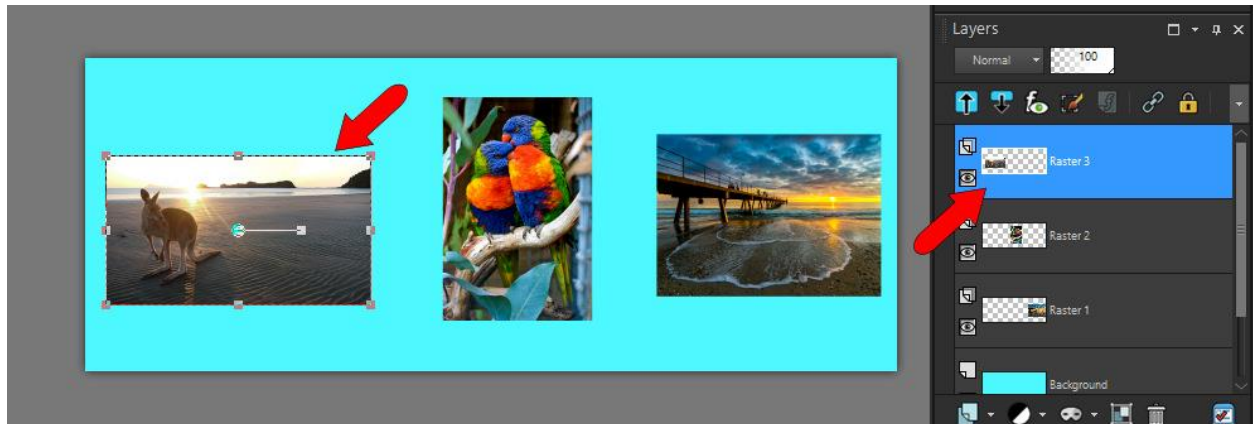


Go to **Image > Crop to Selection** to trim away the rest of the canvas.

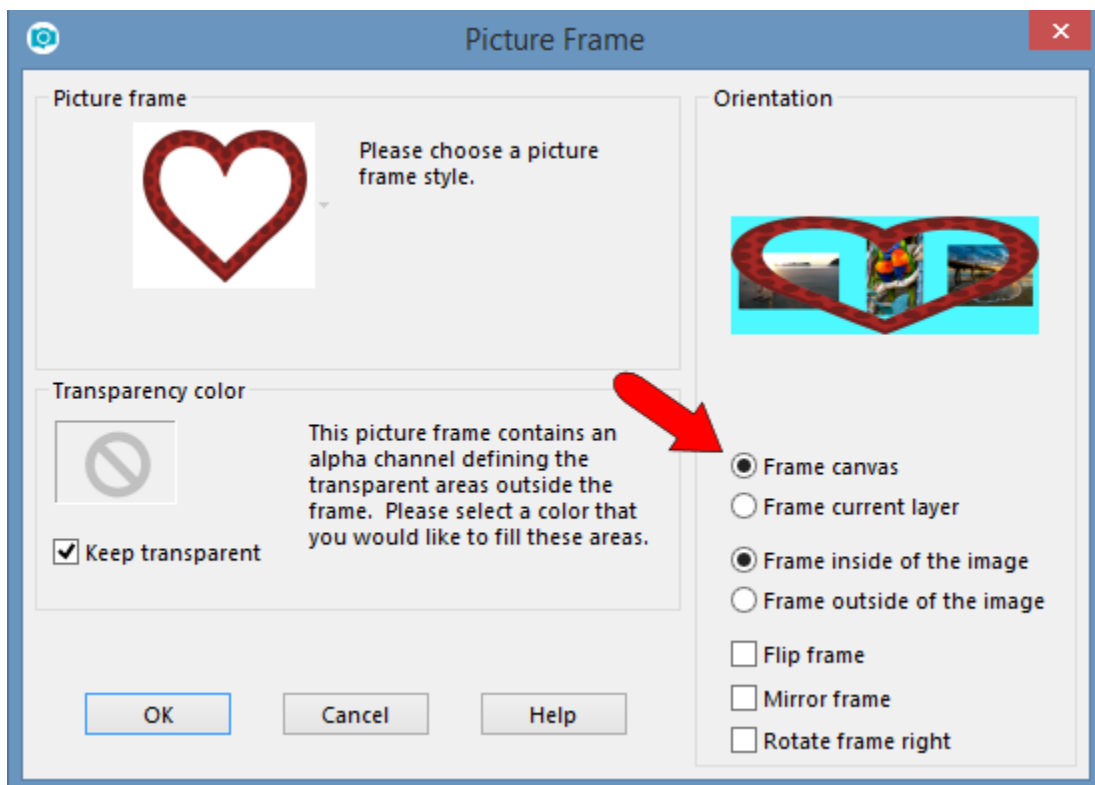




To frame just one of the landscape-oriented photos – the kangaroo in this example - use the **Pick** tool to select it, which makes that photo's layer active. (Or just select the photo's layer, while any other tool is active.)

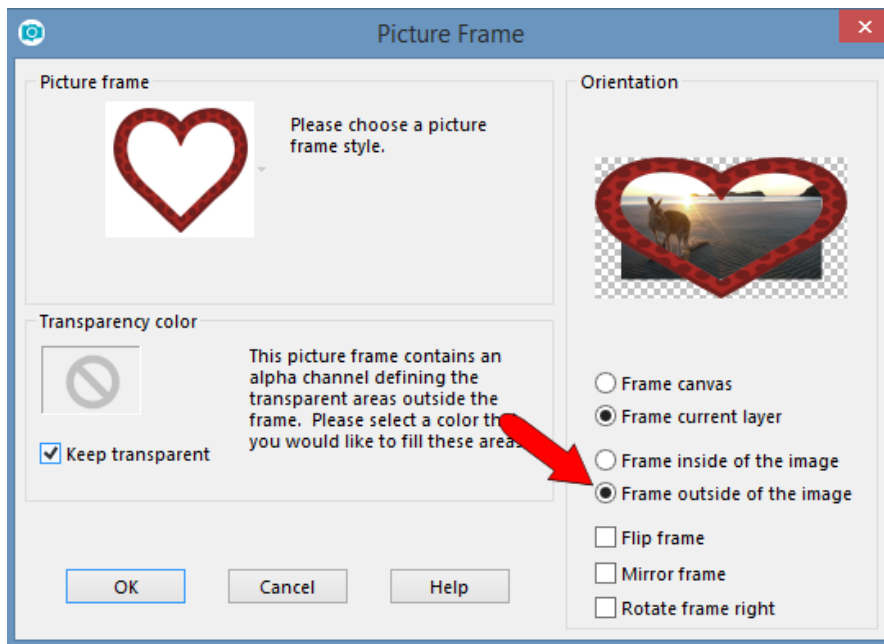


Go to **Image > Picture Frame** and choose the frame called **Hearts01**. If **Frame canvas** is checked, the frame goes around the entire collage.

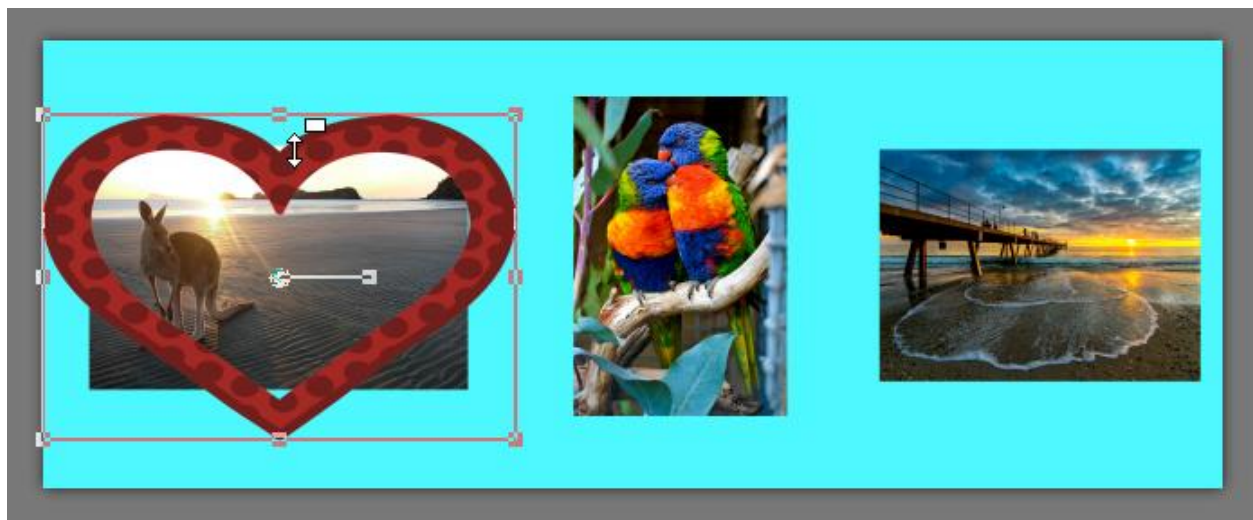


We want to frame just the kangaroo image, not the whole canvas so select **Frame current layer**, which applies the frame to only the active photo. The heart is meant to be oriented vertically, but widens to accommodate the image size.

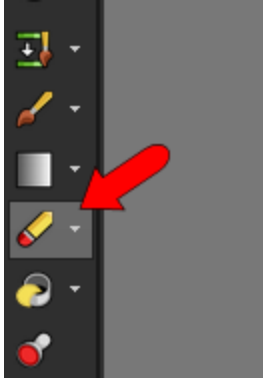
We want to keep the background transparent so the light blue canvas color will show through. Also, choose **Frame outside of the image**.



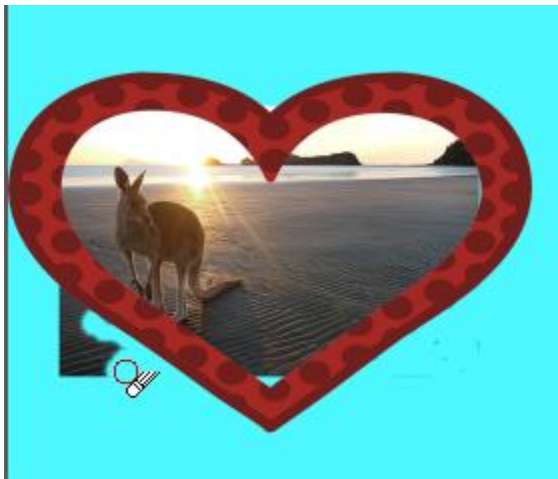
Because the image and its frame are on separate layers, each can be selected and adjusted separately. So you can adjust the photo to better fit the frame, or the frame to better fit the photo.



In this example of the kangaroo, the two lower corners of the photo extend past the frame. To clean this up, make sure the photo's layer is active and activate the **Eraser** tool.



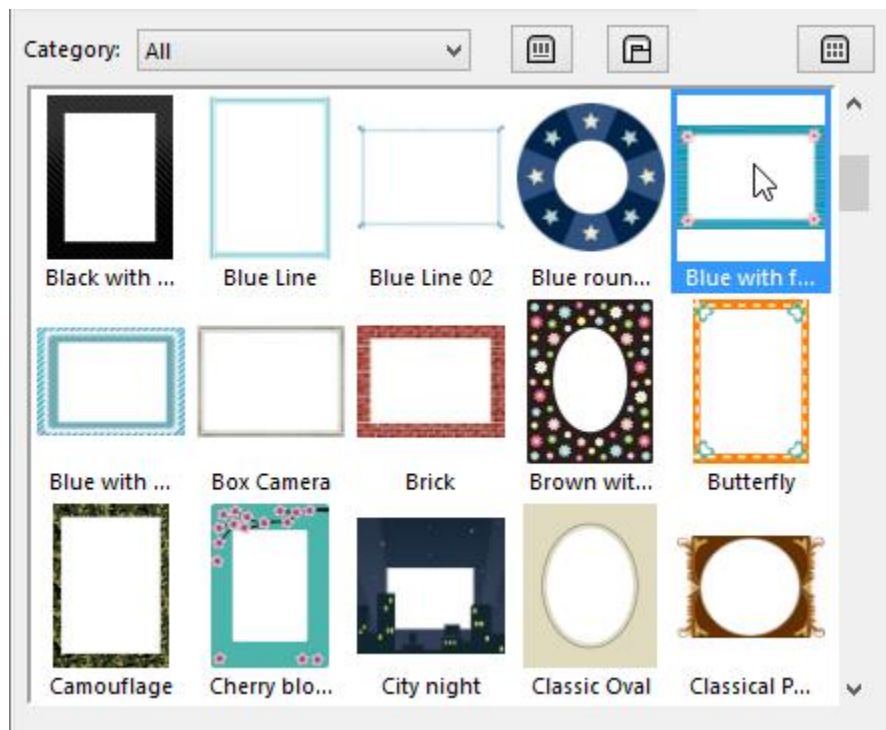
Sweep over the parts of the photo to remove. The frame is not affected, since its layer is not active.



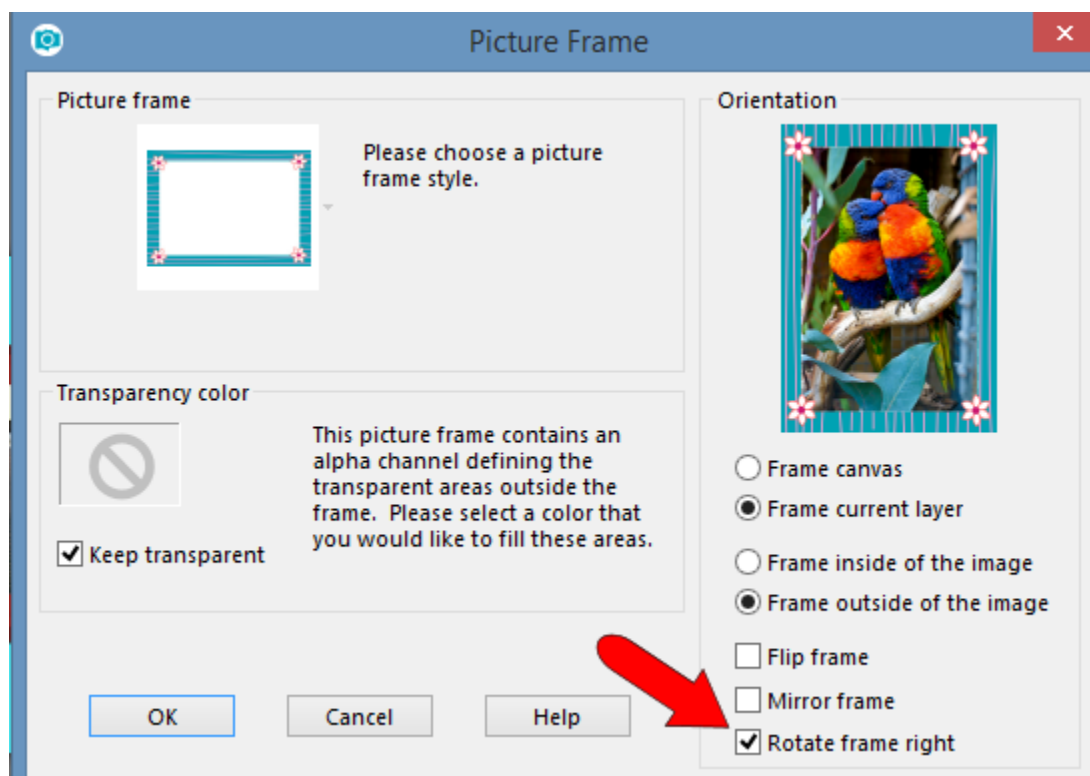
For the next frame, choose the photo that has portrait orientation.



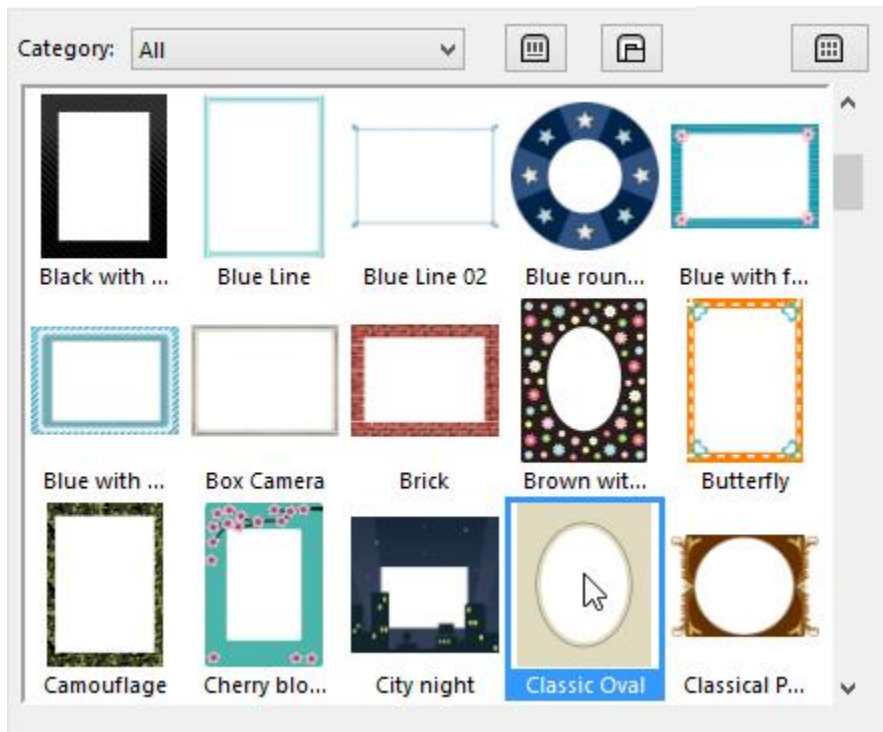
For the frame, choose one that has landscape orientation, such as this blue frame with flowers.



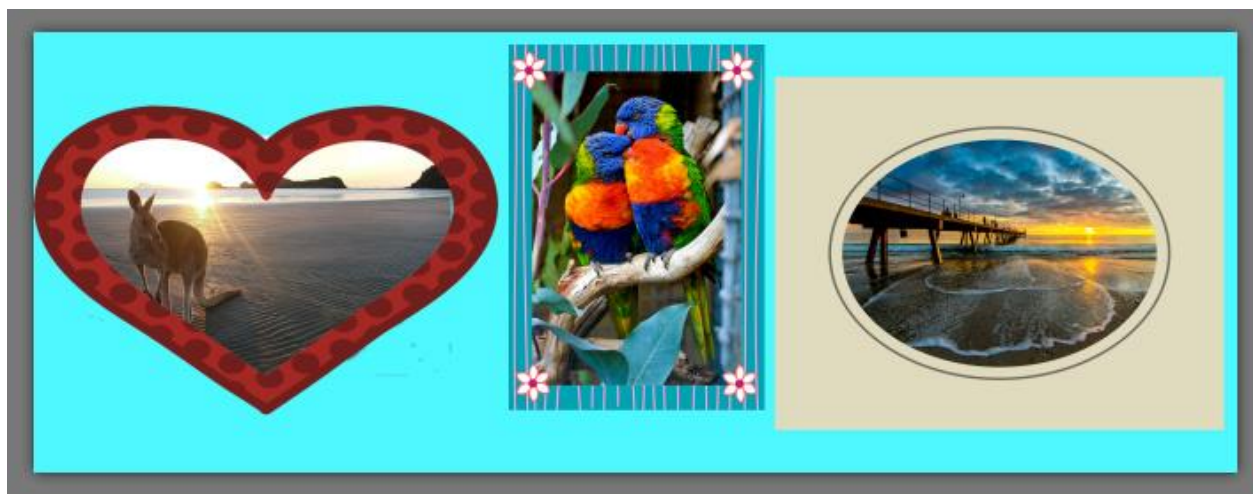
The frame automatically rotates to have the current orientation.



For the last frame, choose the sunset beach photo, which has landscape orientation, and choose a portrait-oriented frame, such as **Classic Oval**.

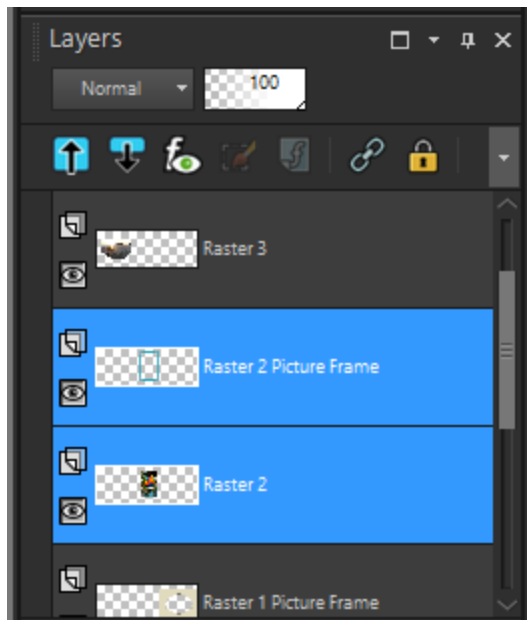


As before, this frame rotated to match the photo's orientation.

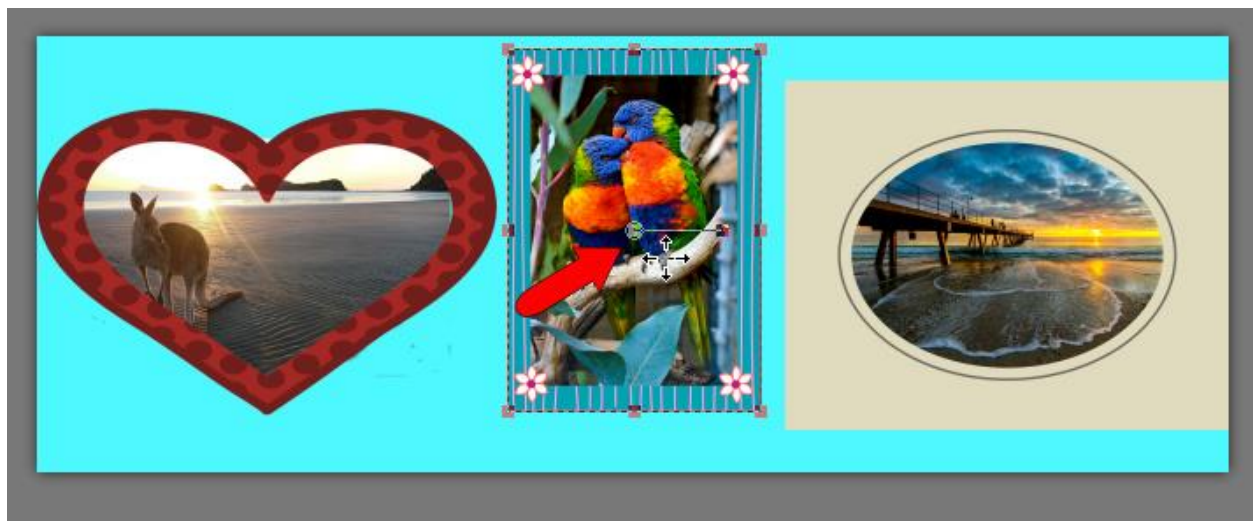


To move or adjust both a photo and its frame, both objects must be selected. You can do this with the **Pick** tool, by pressing the **Shift** key and clicking both the photo and its frame. Or press **Shift** and select both layers.

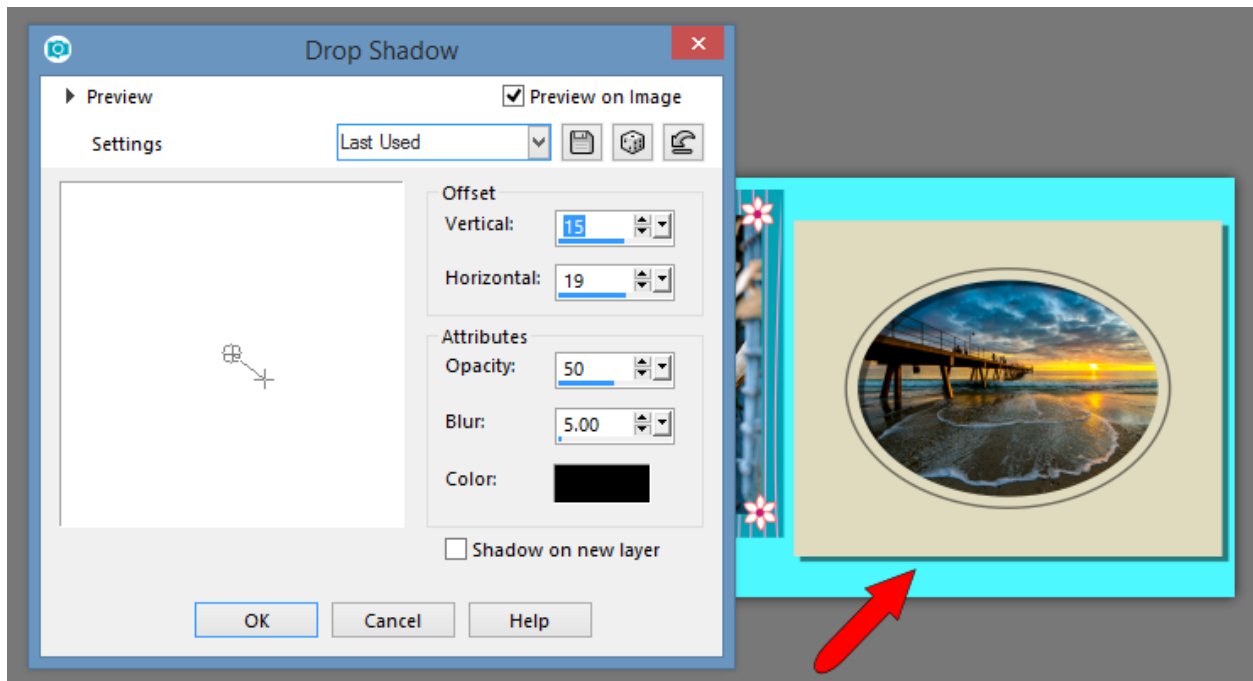




To move both objects, drag them by the center drag handle. You can also widen, enlarge, shrink, etc.



Finally, you can apply 3D effects to your frames. Select a frame, such as the oval frame in this example, and go to **Effects > 3D Effects > Drop Shadow**. The Drop Shadow option is shown here. All 3D effects have options you can adjust, such as depth, color, and angle.



Here are the three frames in this collage. The frame around the birds has a **Chisel** effect, and the heart frame has an **Inner Bevel** effect.

